

What is true blue power's new lithium-ion battery?

True Blue Power, the first company to receive FAA TSO certification for lithium-ion batteries, has added a 60 amp-hour lithium-ion battery to its Gen5 product line. The TB60 saves up to 50 pounds per battery, significantly reducing aircraft empty weight and increasing useful load, according to officials with the Wichita-based company.

What is a true blue power battery?

True Blue Power batteries are the lightest and most compact, saving you up to 85 pounds per battery. Our efficient design gives you more power per pound than any other aircraft battery. Less weight means more passengers, more cargo, more fuel, and more design flexibility. Protect your engine and extend component life.

Why should you buy True Blue power lithium-ion aircraft batteries?

Why Buy True Blue Power Lithium-ion Aircraft Batteries? True Blue Power is the world's first company to engineer and TSO certify lithium-ion main ship batteries for aviation. Our mission is to ensure you Start LIGHTER, Start FASTER, and Start SMARTER with the lightest, most powerful, most reliable, certified batteries on the market.

What is true blue power TB17 advanced lithium-ion aircraft battery?

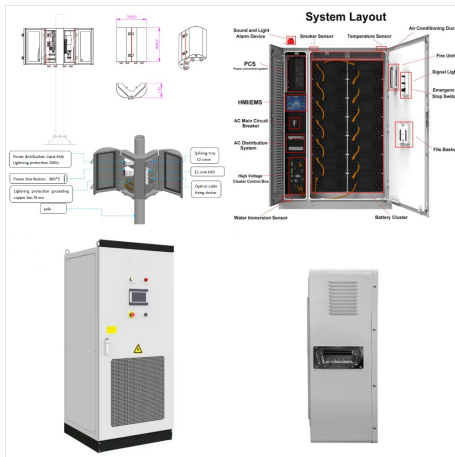
Cut your aircraft battery weight by up to 45% with the True Blue Power TB17 Advanced Lithium-ion Aircraft Battery. You'll protect your engine with cooler, faster starts. An automatic, built-in heater ensures your aircraft outperforms all others in extreme cold temperatures, from -40°C to +70°C.

Is the True Blue power advanced lithium-ion battery dangerous?

In accordance with IATA and per UN 3480, PI 965, Section 1A and 1B, when shipped by air, the True Blue Power Advanced Lithium-ion Battery will be shipped with a state of charge (SOC) not to exceed 30% of rated capacity. This battery is classified as a Class 9 Dangerous Goods.

What is true blue power's new main ship battery?

True Blue Power, the leading manufacturer of lithium-ion aircraft batteries, introduced the company's newest main ship battery during the New Product Introduction session at the Aircraft Electronics Association (AEA) International Convention and Trade Show.



Features. 46 amp-hour battery nominal at 23°C/73.4°F; Weighs 51.7 lbs. ??? 40% lighter than lead-acid or nickel-cadmium alternatives; Advanced Nanophosphate(R) lithium-ion cell chemistry ??? 3x the energy per kilogram when compared to lead-acid and nickel-cadmium cells



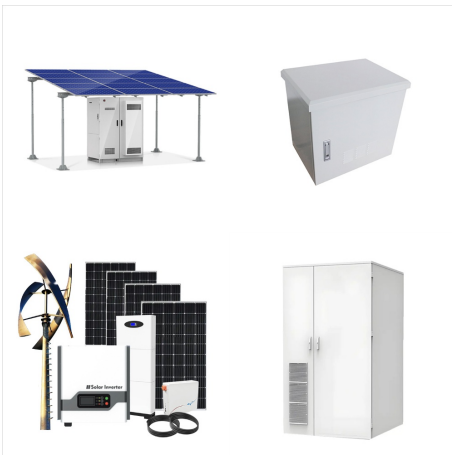
True Blue Power Lithium Battery Upgrade for ALL Pilatus PC-12 Models. May 16, 2023. PC-12 operators reduce risk of hot starts, costly engine tear downs and inspections, and improve extreme cold-weather performance ???



The True Blue TB44 Advanced Lithium-ion Battery uses the most sophisticated lithium-ion chemistry available, providing aviators with the unmatched advantage of faster starts, increased power, reduced weight, extended useful life, and lower direct operating costs. Coming Soon for ???



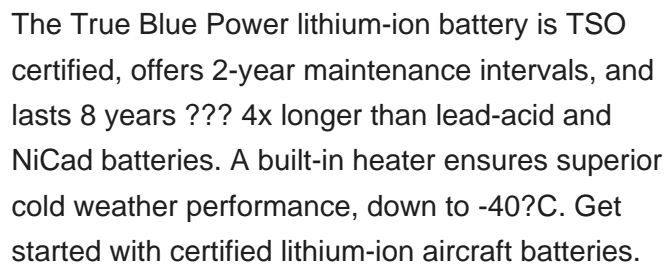
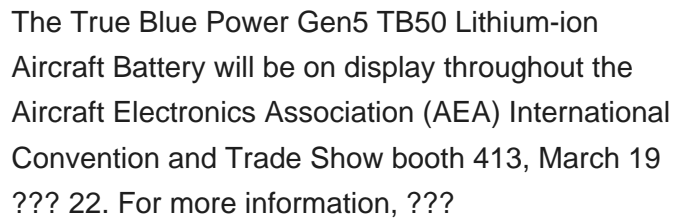
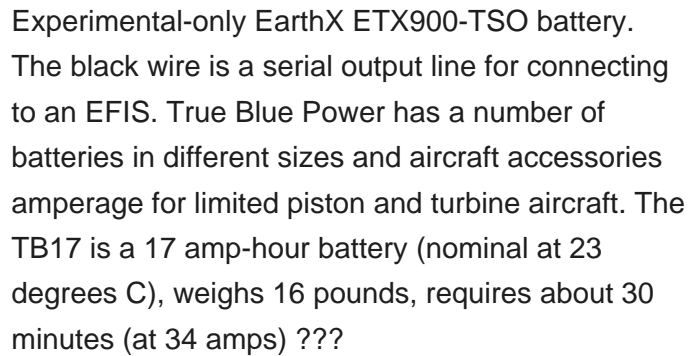
Available with optional heater on/off feature. Cut your aircraft battery weight by up to 45% with the True Blue Power TB17 Advanced Lithium-ion Aircraft Battery. You'll protect your engine with cooler, faster starts. An automatic, built-in heater ensures your aircraft outperforms all others in extreme cold temperatures, from -40°C to +70°C.



The True Blue Power Gen5 TB40 Lithium-ion Aircraft Battery is TSO certified, features a built-in automatic heater and allows you to fully recharge within 30 minutes. This intelligent battery is engineered with a Built-in Test (BIT) indicator to communicate real-time state-of-charge and state-of-health data, on demand.



The standard True Blue Power lithium batteries reduce maintenance costs with an extended battery capacity check of two years, while the Gen5 series only requires on-condition maintenance. The batteries also offer a significant increase in cycle-tolerance, designed for 10,000 cycles versus 500-800 for lead-acid or Ni-Cd, which makes them perfect







True Blue Power PRO Battery Charger True Blue Power TB44 Advanced Lithium-ion Battery. Supplier to the World's Top Airlines. Commercial Aircraft Power Examples. Bombardier DHC-8. Product Applications. Boeing 737. Product Applications. Airbus A320. Product Applications. Commercial Aviation News.



Gen5 Advanced Lithium-ion Battery TB20, TB30, TB40, TB60 Manufactured by Mid-Continent Instrument Co., Inc. TB20, TB30, TB40, TB60 Gen5 lithium-ion aircraft batteries address the challenges of lead-acid and NiCad battery technology. The TB20, TB30, TB40 and TB60 offer Flier\_True Blue Power\_TB20-30-40-60



True Blue Power announced the TSO certification of the company's entire Gen5 main ship battery family. The TB20 (20 amp-hour), TB30 (30 amp-hour) and TB40 (40 amp-hour) received an impressive



Delivers more power per pound than any other aircraft battery. 13 amp-hour nominal at 23°C/73.4°F. Weighs 10 lbs. (4.54 kg) Advanced iron phosphate lithium-ion cell chemistry. Higher voltage during engine start ??? Less wear, ???



WICHITA, Kan. (December 7, 2020) ??? True Blue Power, the world leader in certified, lithium-ion aircraft batteries, introduced two aircraft battery chargers to the company's line of advanced power products. The True Blue Charger PRO and True Blue Charger Mx are engineered to provide simple, safe and automatic charging for lithium-ion aircraft batteries.



True Blue Power, March 06, 2019 - ATLANTA, GA ??? The leading manufacturer of lithium-ion aircraft batteries, True Blue Power, introduced the company's new, fifth-generation (Gen5) main ship batteries during a press conference today at the Helicopter Association International (HAI) Heli-Expo. The ultra-lightweight, TB20 (20 amp-hour), TB30 (30 amp-hour) and TB40 (40 amp ???



TB60 lithium-ion battery benefits: Ultra-lightweight and powerful. Weighs 55% less and delivers more amp hours per pound than any other aircraft battery. Real-time monitoring. Communicates real-time state-of-charge (SOC) ???



A drop-in replacement for the 44-amp battery found in many small turbines, the new lithium-ion provides more power and weighs 50 percent less than lead-acid and NiCad batteries, plus it has an 8-year life and on-condition ???



WICHITA, Kan. ??? True Blue Power, the world leader in certified, lithium-ion aircraft batteries, introduced two aircraft battery chargers to the company's line of advanced power products. The True Blue Charger PRO and True Blue Charger Mx are engineered to provide simple, safe and automatic charging for lithium-ion aircraft batteries. "Our lithium-ion batteries ???



The TB40 lithium-ion aircraft battery offers on-condition maintenance and is configurable to meet the needs of each specific aircraft, including charge current limit, end-of-life capacity, minimum dispatch capacity and engine-start readiness. Other True Blue Power products ADVANCED LITHIUM-ION BATTERIES. aircraft battery TB14. lithium-ion



WICHITA, Kan. ??? True Blue Power announced Finnoff Aviation Products has selected the company's TB44 (46 amp-hour) main ship battery for a lithium-ion battery Supplemental Type Certification (STC) kit, available on Pilatus PC-12, PC-12/45 and PC-12/47 single-battery aircraft. An amendment to include dual-battery aircraft is currently in progress.



The intelligent True Blue Charger Mx extends battery life and provides simple, safe and automatic charging for lithium-ion and sealed lead-acid aircraft batteries. The direct-connect, 2.5-amp charger maintains batteries of any capacity, from zero to full state-of-charge (SOC), while continuously displaying battery voltage.





Ideal for the piston, turbine, and emergency power market, the True Blue Power Advanced Lithium-ion Batteries start the aircraft's engine quickly and feature superior energy density. Nanophosphate(R) lithium-ion cells offer 3x the energy per kilogram, resulting in a battery that is 45% lighter than. lead-acid or nickel-cadmium alternatives.



Overview. True Blue Power Gen5 TB40 Lithium-Ion Battery. WARNING: Cancer and Reproductive Harm - Features. 40 amp-hour nominal at 23°C/73°F. Weighs 36.6 lbs. ??? up to 60% less than lead-acid and ???



True Blue Power, the first company to receive FAA TSO certification for lithium-ion batteries, announced it has added a 60 amp-hour lithium-ion battery to its Gen5 product line. The TB60 saves up to 50 pounds per battery, significantly reducing aircraft empty weight and increasing useful load. "This battery is a beast.



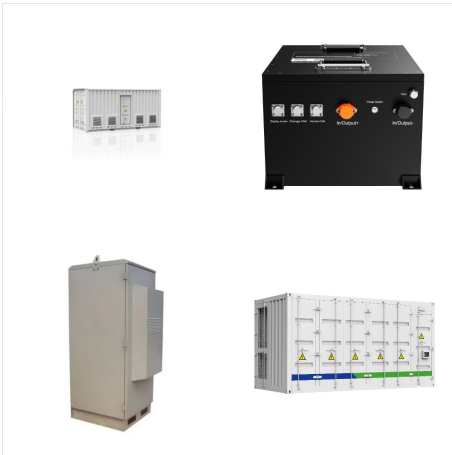
Larry Anglisano, editor of The Aviation Consumer, stopped by the True Blue Power booth last week at NBAA-BACE 2024 to check out the newest offering in its line of lithium-ion batteries. The Gen5 TB50 Lithium-ion Aircraft Battery is an engine start battery that delivers 50 amp-hours at half the weight of other batteries on the market.



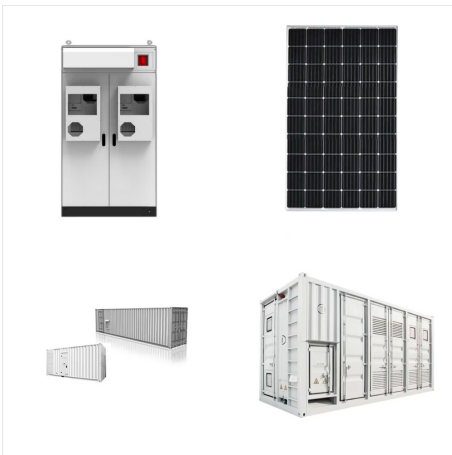
True Blue Power . As low as \$800.00 (list) View Details. 6430006-1 . Model # TS6 Lithium-ion Aircraft Battery . 26.4 VDC, 17 Ah, Lithium-ion, TSO, With heater on/off feature . Mid-Continent Instruments and Avionics . True Blue Power



True Blue Power batteries are the lightest and most compact, saving you up to 85 pounds per battery. Our efficient design gives you more power per pound than any other aircraft battery. Less weight means more passengers, more cargo, ???



The True Blue Power Gen5 TB50 Lithium-ion Aircraft Battery will be on display throughout the Aircraft Electronics Association (AEA) International Convention and Trade Show booth 413, March 19 ??? 22. For more information, contact Van Winter, Director of Aftermarket Sales and Support, at 316-630-0101 or visit [truebluepowerusa.com](http://truebluepowerusa.com).



Cut your aircraft battery weight by up to 45% with the True Blue Power TB17 Advanced Lithium-ion Aircraft Battery. You'll protect your engine with cooler, faster starts. An automatic, built-in heater ensures your aircraft outperforms all ???



Our True Blue Power division was established in 2010. It specializes in the design and manufacturing of cutting-edge, certified electrical power systems and lithium-ion batteries. This includes USB chargers, power conversion products, ???