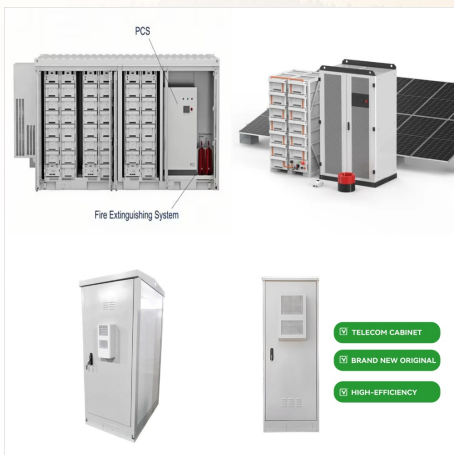




Canadian marine battery manufacturer Corvus Energy and Germany's Siemens have been awarded a contract to install an energy storage system (ESS) on Fannefjord LNG hybrid ferry operated by Norway's Fjord1. The vessel will use a 1,050V, 410kWh ESS consisting of 63 Corvus Energy AT6500 advanced lithium polymer batteries.



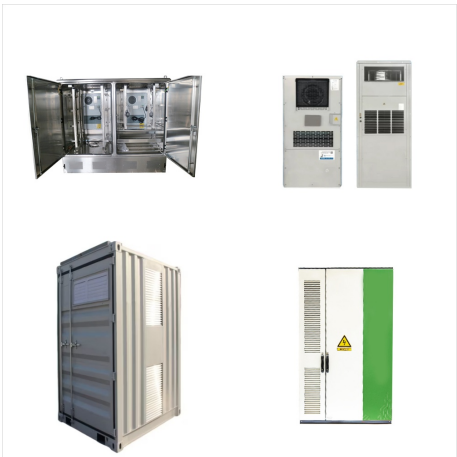
Corvus Energy, Siemens AS and ?stensj? Rederi strengthen partnership with second offshore vessel project. The new 150m MPSV to be named the Edda Freya will incorporate a 1050VDC, 546kWh Corvus ESS consisting of 84 Corvus Energy AT6500 advanced lithium polymer battery modules.



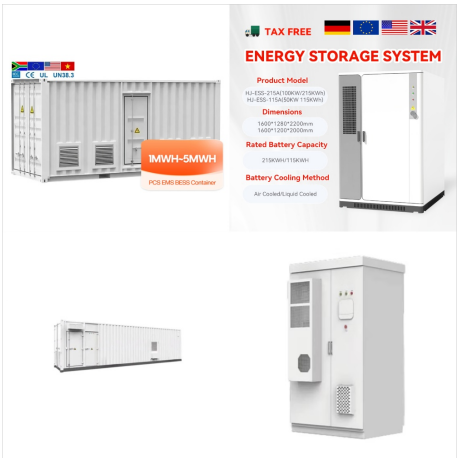
Corvus Energy, Siemens AS and ?stensj? Rederi strengthen partnership with second offshore vessel project. The new 150m MPSV to be named the Edda Freya will incorporate a 1050VDC, 546kWh Corvus ESS ???



Safe Technology & Multi-level Protection. The solution uses the best-in-class Tier 1 Lithium Iron Phosphate (LFP) chemistry for the highest level of safety, thermal stability, and reliability; An integrated, multi-level



SummaryHistoryOverviewTransportationFlora and faunaSee alsoExternal links



Battery energy storage systems (BESS) from Siemens Energy are comprehensive and proven. Battery units, PCS skids, and battery management system software are all part of our BESS solutions, ensuring maximum efficiency and safety for each customer.



Siemens Energy is making a significant investment in the United States with plans to inject \$150 million into the establishment of a new power transformer factory. The German power equipment giant announced its ???



Siemens Energy is making a significant investment in the United States with plans to inject \$150 million into the establishment of a new power transformer factory. The German power equipment giant announced its intention to construct the facility in Charlotte, North Carolina, with projections to generate nearly 600 local job opportunities.



The minor outlying islands and groups of islands comprise eight United States insular areas in the Pacific Ocean (Baker Island, Howland Island, Jarvis Island, Johnston Atoll, Kingman Reef, Midway Atoll, Palmyra Atoll, and Wake Island) and one in the Caribbean Sea (Navassa Island).

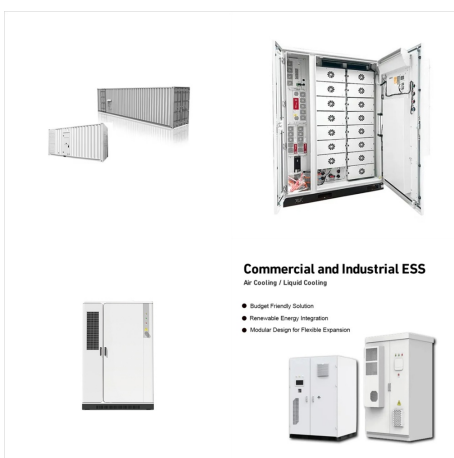
U S OUTLYING ISLANDS SIEMENS ESS



Drawing off its extensive experience in the electrification of marine assets, Siemens has taken a significant step on the way to helping the industry achieve those goals by supplying the world's first energy storage solution (ESS) to an offshore drilling rig.



Drawing off its extensive experience in the electrification of marine assets, Siemens has taken a significant step on the way to helping the industry achieve those goals by supplying the world's ???



Fluence Energy, a subsidiary of Siemens, and Excelsior Energy Capital have agreed to install 2.2 gigawatt-hours (GWh) of battery energy storage systems (BESS) in the US from 2025. Excelsior will deploy Fluence's Gridstack Pro product line, which will use battery cells manufactured in Tennessee and modules produced in Utah, utilising the

U S OUTLYING ISLANDS SIEMENS ESS



? 1/4 ?? 1/4 ?United States Minor Outlying Islands?
1/4 ?,ISO 3166-1???GB/T 2659,UM???



crogrids. They enable island operation to seamlessly switch between the grid and its own reserves. Our offering in-cludes: ??? Microgrid studies for the dimension-ing of storage and generation units and the analysis of the grid structure with respect to optimized levelized cost of energy (LCOE), network tariffs and sustainability