

Does Hewlett Packard Enterprise have a backup power source?

Hewlett Packard Enterprise offers two centralized backup power source options to back up write cache content on the controllers in case of an unplanned server power outage. The HPE Smart Storage Hybrid Capacitor is only supported on Gen10 and later servers. One energy pack option can support multiple devices.

Does the HPE smart storage hybrid capacitor support multiple devices?

The HPE Smart Storage Hybrid Capacitor is only supported on Gen10 and later servers. One energy pack option can support multiple devices. An energy pack option is required for 900 series controllers. Once installed, the status of the energy pack displays in HPE iLO.

How do I install the energy pack?

Install the energy pack option. Route and connect the cable. Do not connect the energy pack while the server is operating. Verify that all power to the server has been removed. Install the fan cage. Install the access panel. Install the server into the rack. Connect each power cord to the server. Connect each power cord to the power source.



96W Smart Storage Battery - For DL/ML/SL  
Generation 9 series of servers - One battery pack  
provides flash back write cache (FBWC) for all the  
drive controllers in the server - Connects to the  
system I/O board, 145mm (5.7-inch) long cable:  
2574: COMPLY\_1906: A-N/A-

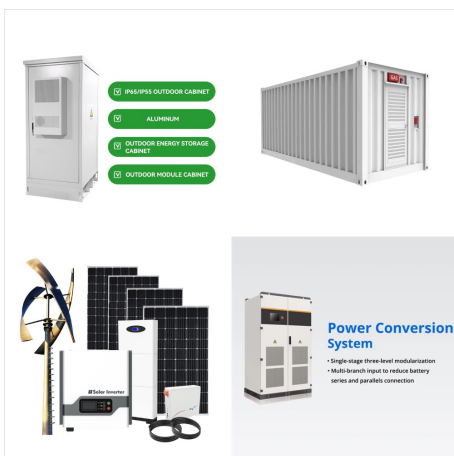
# U S VIRGIN ISLANDS HPE SMART STORAGE ENERGY PACK



Hewlett Packard Enterprise offers two centralized backup power source options to back up write cache content on HPE Smart Array controllers in case of an unplanned server power outage. In documentation and system messaging, "energy pack" is used to refer to both the HPE Smart Storage Battery and the HPE Smart Storage Hybrid Capacitor.



Make sure that a Smart Array P-class controller is installed. Make sure that you have the following items available: Storage controller backup power cable (ships with the storage controller) Energy pack option HPE Smart Storage Battery fan option is required for 4LFF or 8SFF configurations.



96W Smart Storage Battery - For DL/ML/SL Generation 9 series of servers - One battery pack provides flash back write cache (FBWC) for all the drive controllers in the server - Connects to the system I/O board, 145mm (5.7-inch) long cable: A-N/A-COMPLY\_1906: Cable: 792836-001

# U S VIRGIN ISLANDS HPE SMART STORAGE ENERGY PACK



Update the System ROM, Smart Array, and iLO firmware. Confirm energy pack status in the iLO GUI. Consult the server user guide for more information. Scope: HPE SimpliVity 380 Gen10 node configured with any of the following network adapters: HPE Ethernet 10Gb 2-port 535FLR-T Adapter; HPE Ethernet 10Gb 2-port 535T Adapter; HPE Ethernet 10/25Gb 2



The health of the energy pack can be viewed using any of the following options: HPE iLO GUI under the Power & Thermal > Power. The controller's GUI & CLI tools along with HPE iLO Redfish under StorageController > CacheSummary. HPE iLO Redfish Chassis resource. Upon starting, the storage controllers exchange information with HPE BIOS during POST and ???



United States - English; Sign In; Support Center. 3. You have 3 new notifications. Light Mode. United States - English; Energy pack spare parts. Subtopics. HPE Smart Storage Hybrid Capacitor spare part; HPE Smart Storage Battery spare part; Related Products. HPE ProLiant DL380 Gen11. On This Page.

# U S VIRGIN ISLANDS HPE SMART STORAGE ENERGY PACK



96W Smart Storage Battery - For DL/ML/SL  
Generation 9 series of servers - One battery pack  
provides flash back write cache (FBWC) for all the  
drive controllers in the server - Connects to the  
system I/O board, 145mm (5.7-inch) long cable  
A-N/A-COMPLY\_1906: 815983-001



HPE MR Storage Administrator. HPE  
Smart???????????? 1/4 ??,??(R)Energy  
Pack????????????????(R)?????? About HPE  
Accessibility Careers Contact Us Corporate  
Responsibility Global Diversity & Inclusion HPE  
Modern Slavery Transparency Statement (PDF)  
Hewlett Packard Labs Investor Relations  
Leadership Public Policy.



1?????(R)Energy  
Pack????????????????(R)????????????  
?????u????? 1/4 ?????????? 3/4 ??????Energy  
Pack????????????????????????????  
???????????? ????????????????? 1/4  
??,????????????-?? 1/4 ??(C)?? 1/4  
????????(C)????????????????????(C  
)????????-???????????? 1/4 ?FBWC? 1/4 ???  
3/4 ??????????<????????<?????Energy  
Pack????????????????????



# U S VIRGIN ISLANDS HPE SMART STORAGE ENERGY PACK



Energy pack spare parts. Customer self repair:  
Mandatory. Description Spare part number HPE  
Smart Storage Battery, 96 W, 145 mm cable :  
878643-001 HPE Smart Storage Hybrid Capacitor,  
12 W, 145 mm cable : P07473-001: Energy pack  
spare parts. Customer self repair



NOTE: System ROM and firmware messages might  
display "energy pack" in place of "Smart Storage  
Battery." Energy pack refers to both HPE Smart  
Storage batteries and HPE Smart Storage Hybrid  
capacitors. Prerequisites. Before you perform this  
procedure, make sure that you have the following  
items available:



The HPE Smart Storage Hybrid Capacitor is only  
supported on Gen10 and later servers. Only one  
energy pack is required per server, as it can support  
multiple devices. Procedure. Power down the  
compute module. Remove the compute module.  
Place the compute

# U S VIRGIN ISLANDS HPE SMART STORAGE ENERGY PACK



The IML shows the Array Storage Battery is failed. From the documentation I can find, apparently this should not cause the server to just up and reboot. It's taking down some 10 VM's in the process including my IP phone system.



United States - English; Sign In; Support Center. 5. You have 5 new notifications. Light Mode. System ROM and firmware messages might display "energy pack" in place of "Smart Storage Battery." Energy pack refers to both HPE Smart Storage batteries and HPE Smart Storage Hybrid capacitors. Procedure. Power down the server.

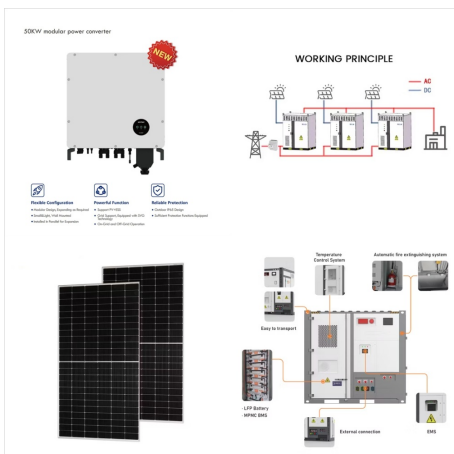


Hewlett Packard Enterprise ??<????????u?? 1/4  
????? 1/4  
??(R)??????????<????????????????????-??  
1/4 ??(C)?? 1/4  
??<????????-????????????(R)????????????  
????????????????????<????????????????  
????????????????????  
HPE Smart???????????? 1/4  
??,???????????????????? 3/4 ??????  
???????????????? HPE iLO ??<Energy  
Pack??(R)???????? 1/4 ??????

# U S VIRGIN ISLANDS HPE SMART STORAGE ENERGY PACK



Ensure that the energy pack is fully charged. An HPE Smart Storage Battery might take up to 120 minutes in a powered compute module or frame to charge enough to support the number of battery-backed devices installed. An HPE Smart Storage Hybrid Capacitor takes only 5 minutes to charge. If the charge level is insufficient to support the battery-backed devices installed in the ???



United States - English; Sign In; Manage privacy and data collection on HPE . HPE ProLiant DL380 Gen10 Server User Guide. Table of contents. Component identification Installing an energy pack option for HPE Smart Storage. Prerequisites. Procedure. Was this information helpful? Thank you!



HPE Smart Storage Hybrid Capacitor with 145mm Cable Kit. Show More Show Less. SKU # P02377-B21. Condition. New. BUY NOW FROM HPE STORE: \$360.63 Chat with us hpestoresupportus@hpe . Specifications. Additional Resources Options. Additional Resources. Related Links. Documents

# U S VIRGIN ISLANDS HPE SMART STORAGE ENERGY PACK



Ensure that the energy pack is fully charged. An HPE Smart Storage Battery may take up to 120 minutes in a powered compute module or frame to charge enough to support the number of battery-backed devices installed. An HPE Smart Storage Hybrid Capacitor takes only 5 minutes to charge. If the charge level is insufficient to support the battery-backed devices installed in the ???



United States - English; Sign In; Manage privacy and data collection on HPE . HPE ProLiant ML350 Gen10 Server User Guide. Table of contents This server supports the following power options???collectively known as energy pack: HPE Smart Storage Battery. HPE Smart Storage Hybrid Capacitor. One energy pack supports multiple devices.



United States - English; Sign In; Manage privacy and data collection on HPE . HPE ProLiant DL360 Gen11 Server User Guide. Table of contents This server supports the following power options???collectively known as energy pack: HPE Smart Storage Battery. HPE Smart Storage Hybrid Capacitor. One energy pack supports multiple devices.



# U S VIRGIN ISLANDS HPE SMART STORAGE ENERGY PACK



This server supports the installation of a centralized backup power source option to back up write cache content on P-class HPE Smart Array controllers in case of an unplanned server power outage. Use this procedure to remove and replace either the HPE Smart Storage battery or the HPE Smart Storage Hybrid Capacitor.



NOTE: System ROM and firmware messages might display "energy pack" in place of "Smart Storage Battery." Energy pack refers to both HPE Smart Storage batteries and HPE Smart Storage Hybrid capacitors. Procedure. Power down the server. Do one of the following: Disconnect each power cord from the power source.



Energy Pack??(R). 1: HPE Smart???????????? 1/4  
??,???????????????? 1/4 ?12W? 1/4 ? ;  
Smart???????????? 1/4  
??,????????????????(R)??<???? : 12 W? 1/4 ?1?  
1/4 ?3??(R)????????????????(R)? 1/4 ?  
Smart???????????? 1/4  
??,????????????????????????????????????(R) :

# U S VIRGIN ISLANDS HPE SMART STORAGE ENERGY PACK



Hewlett Packard Enterprise ????????u?? 1/4  
????? 1/4  
??(R)?????????????<???Smart?????????????????  
????-?? 1/4 ??(C)?? 1/4  
??(R)?????????-????????????????(R)?????????????  
????????????????????????????(R)?????????????????  
????????????????2?????(R)????????????????????  
????????? 3/4 ??????. HPE Smart????????????? 1/4  
??.?????????????. HPE Smart????????????? 1/4 ??,  
????????????????????-????????????????? 1/4