

PALPEAL AMP-16CH 16 Channels UHF Wireless Antenna Power Distribution System, 14 Outputs + 2 Cascade Ports, Microphone Antenna Splitter, Antenna Amplifier, Signal Amplifier for Wireless Microphone Phenyx Pro PAS-225X ???



UHF Antenna Power Distribution System for Shure Wireless Cordless Microphone System with 2 Active Directional Antenna Paddle ; Five-way active antenna splitter and power distribution system for QLX-D, ULX, ULX-D, SLX, and BLX (BLX4R only) receivers ; Comes with 2 Antenna Paddles



Buy Shure UA844+SWB UHF Antenna Distribution System with Active Directional Antennas Kit (3 to 5 Systems) featuring 470 to 960 MHz Wideband UHF, UA844+SWB Antenna Distribution System, 2 x UA874 Active Directional Antennas, 4 x DC Power Cables, 4 x Non-Locking DC Power Cables, 10 x 22" BNC Cables, 2 x 6" BNC Cables, 2 x Bulkhead Adapters, Rackmount ???

# UHF ANTENNA POWER DISTRIBUTION SYSTEM



UHF Antenna Power Distribution System for Shure Wireless Cordless Microphone System with 2 Active Directional Antenna Paddle ; Five-way active antenna splitter and power distribution system for QLX-D, ULX, ULX-D, SLX, and BLX (BLX4R only) receivers ; Comes with 2 Antenna Paddles



ceiver or a second UA845. There are also power connectors for powering Shure UHF Wireless systems. Each system contains the following items:  
??? UA845 Antenna Distribution System ???  
Rack-mounting hardware ??? Surface-mounting hardware ??? Front-mounting antenna hardware  
??? 18-in. Power OUTPUT Cord ??? Power Cord  
??? Antenna cables for receiver



The RF Venue DISTRO4 distributes diversity RF and DC power across four wireless microphone receivers of any brand. A true "distribution amplifier," DISTRO4 splits signals from two antennas (or one Diversity Fin) connected to the rear panel and amplifies them before delivering the signals to multiple receivers in a rack. An additional cascade port is included for daisy chaining ???

# UHF ANTENNA POWER DISTRIBUTION SYSTEM



UHF Antenna Power Distribution System  
470-952MHZ W/ POWER SUPPLY The Antenna Distribution System allows four receivers to use the same set of antennas. The cascade connectors allow connections to a fifth receiver or a second antenna Distribution system. There are also power connectors for distributing power to each receiver.



Shure UA845 Wideband UHF 5-Way Antenna and Power Distribution System. The Shure UA845 is a UHF antenna distribution amplifier system designed to integrate with the Shure U4S, U4D, or UC4 wireless microphone receivers. The UA845 receives incoming RF signal using dual antennas, then distributes the signal via 4 BNC type connections.

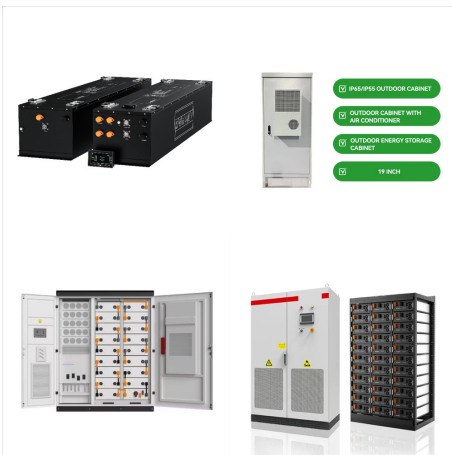


The UA845UWB Ultra-Wide Band Antenna and Power Distribution System from Shure is a five-way active antenna splitter and power distribution system for Shure's wireless UHF-R, QLX-D, ULX, ULX-D, SLX, and BLX (BLX4R only) ???

# UHF ANTENNA POWER DISTRIBUTION SYSTEM



item 6 SHURE UA844SWB UHF Antenna Power Distribution System w/ Power Cord (470-952 MHz)  
SHURE UA844SWB UHF Antenna Power Distribution System w/ Power Cord (470-952 MHz)  
\$332.49. Last one Free shipping.



???ANTENNA DISTRIBUTION SYSTEM???Large-scale UHF antenna paddle, supports 10 groups of antennas, 4 groups of DC power ports, 12V direct current. Each unit can make 4 wireless receivers use with 2 same antennas. The ???



Five-Way Active Antenna Splitter and Power Distribution System for UHF-R(R), QLX-D(R), ULX(R), ULX-D(R), SLX(R) and BLX(R) (BLX4R only) receivers. The Shure Model UA845UWB Antenna Distribution System allows four receivers to use ???

# UHF ANTENNA POWER DISTRIBUTION SYSTEM



## Antenna Distribution System DISTRO4???

DISTRO4 is a broadband UHF antenna distribution amplifier that routes antenna signals from a pair of diversity To turn the Power-to-Antenna function "On", the switch (labeled #11 above) must be moved to the "On" position. However, access to this switch requires opening the DISTRO4 housing cover



UHF Active Directional Antenna Power Distribution System for SHURE Wireless Microphone System with Antenna Paddle. 4.1 out of 5 stars 36. 1 offer from \$32999 \$ 329 99. Phenyx Pro PAS-225X UHF Wireless Antenna Distribution System Bundle, Active Directional Antennas, 8 Outputs + 2 Cascade Ports, 160ft Long Coverage, for Stages and Live Shows



The AEW-DA550C and AEW-DA660D are UHF active unity -gain diversity antenna distribution systems. Identical in all other respects, the AEW-DA550C operates over a nominal 540-565 MHz range, while the AEW-DA660D operates over a nominal 655-680 MHz range. These units are designed to complement wireless systems operating in the Audio -Technica "C



# UHF ANTENNA POWER DISTRIBUTION SYSTEM



The UA845UWB Ultra-Wide Band Antenna and Power Distribution System from Shure is a five-way active antenna splitter and power distribution system for Shure's wireless UHF-R, QLX-D, ULX, ULX-D, SLX, and BLX (BLX4R only) receivers. It allows four wireless receivers to use the same set of antennas, and cascade connectors allow connections to a fifth receiver or a ???



The Audix ADS48 is a wide range UHF antenna distribution system that combines up to four wireless systems to be able to run off a single pair of antennas and power supply. The ADS48 has an internal switching power supply which eliminates the need for the individual DC power supplies normally needed for each receiver. RF signals are internally



The Shure UA844+SWB is a five-way active antenna splitter and power distribution system for QLX-D(R), ULX(R), ULX-D(R), SLX(R), and BLX(R) (BLX4R only) receivers, 470-952 MHz. The Shure Model UA844 is a UHF antenna distribution system that allows the expansion of wireless microphone systems by splitting one pair of antennas to multiple receivers.

# UHF ANTENNA POWER DISTRIBUTION SYSTEM



The Shure Model UA845SWB is an amplified, UHF Antenna Distribution System that expands a wireless microphone system by splitting one pair of antennas to multiple Shure UR4 or Shure ULX4 wireless receivers. It also amplifies RF signals to compensate for insertion loss due to splitting signal power



UHF Antenna Distribution System ATW-DA49a. 2 Introduction ??? The wireless system may be affected by electromagnetic noise from light dimmers, computers, OA devices, or electric musical instruments. By turning the antenna power switch ON, 12 V DC can be supplied to the antenna input jacks. ??? The factory default is OFF.

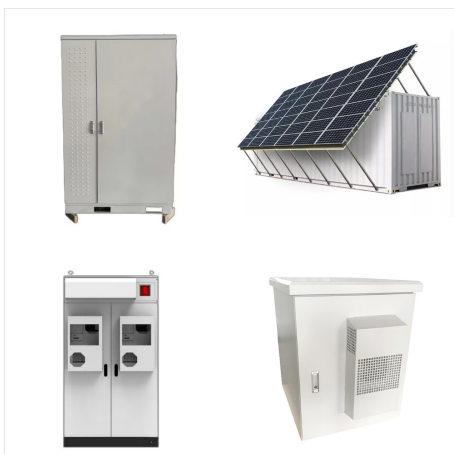


The Shure Model UA844SWB is a UHF antenna distribution system that allows the expansion of wireless microphone systems by splitting one pair of antennas to ??? RF Input, Antenna A ??(C) Power Switch (country dependent) PANNEAUX AVANT ET ARRI?RE ?? Connecteur d"antenne A ??? T?moin d"alimentation

# UHF ANTENNA POWER DISTRIBUTION SYSTEM



Buy UHF Antenna Power Distribution System for Sennheiser Wireless Cordless Microphone System with 2 Active Directional Antenna Paddle: Wireless Microphone Transmitters & Receivers - Amazon FREE DELIVERY possible on eligible purchases



Antenna/Power Distribution System with Cables. Expand your wireless microphone system with the Shure UA844+SWB. This distribution system splits one pair of antennas to five receivers. It conveniently amplifies the antennas' RF signals to compensate for any loss incurred by splitting the signal. Compatible with Shure QLX-D, ULX, ULX-D, SLX, and



Antenna distribution system offers 4-way active antenna splitting and cascade port with different frequency versions available. Antenna Splitter and Power Distribution System for receivers, 4-way active antenna splitter plus cascade port, different frequency versions available, external power supply. UA874 UA874 UHF Active Directional



# UHF ANTENNA POWER DISTRIBUTION SYSTEM



Buy UHF Antenna Power Distribution System for Sennheiser G4 Antenna Distribution Wireless Microphone System with 2 Antenna Paddles for Stage Performance, Theatre, School, Church, Conference, DJ, Wedding: Wireless Microphone Transmitters & Receivers - Amazon FREE DELIVERY possible on eligible purchases



UHF Active Directional Antenna With Integrated Amplifier. \$404.00 The UA844+SWB from Shure is an antenna distribution system allowing you to expand wireless microphone systems by splitting one pair of antennas to multiple receivers. While insertion loss typically results from splitting signal power to multiple outputs, this unit compensates