

What is zxdc48 fb150b1?

Technical Parameters Introduction ZXDC48 FB150B1 is the new generation of SmartLi battery, which adopts advanced lithium technology for telecom sites. It is compact design with enhanced anti-theft function. New technology enables step-by-step investment evolution. **Product Features** 3U height with excellent cycle life
Large charge

What is zxdc48 fb100b3 battery?

Data sheet - ZXDC48 FB100B3 Lithium-ion Battery - Free download as PDF File (.pdf), Text File (.txt) or read online for free. The ZXDC48 FB100B3 SmartLi battery is a 100Ah lithium-ion battery that can be used in parallel with lead-acid batteries at telecom sites. It is compact at 3U height, supports a 19" rack, and has excellent cycle life.

What is the battery capacity of ZTE zxdc48 fb150c1?

The ZTE ZXDC48 FB150C1 lithium-ion battery is designed for backup or cycle use with a capacity of 150Ah. It has a large charge and discharge current of up to 100A and can connect up to 15 batteries in parallel. The battery uses LiFePO₄ material and has a rated capacity of 150Ah at 25°C with a cut-off voltage of 42V and energy of 7200Wh.

Does zxdc48 fb150b1 have a GPS function?

GPS function (optional) Constant voltage put for long distance load Mixed-use with lead-acid battery or different type communication Altitude 0m~4000m 1 ZXDC48 FB150B1 can lock the battery output automatically when battery is stolen, and should be un

When does zxdc48 fb150c1 lithium-ion battery expire?

ZTE hereby solemnly informs you that the EOM date of ZXDC48 FB150C1 Lithium-ion Battery is July 20, 2022. and the EOL plan is shown in the following table. After the EOM date, ZTE will no longer accept orders of this product. You can purchase spare parts before LTBS.

What is the discharge current of zxdc48 fp50a lithium ion battery?

The discharge current must be less than 30A when the mode. lithium-ion battery system, see Figure 6-1. For the discharging magnification characteristics @25 °C of the ZXDC48 FP50A lithium ion battery system, see Figure 6-2.



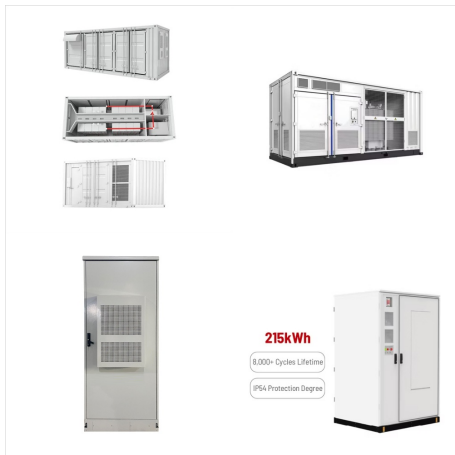
ZXDC48 FB101, a?? i 1/4 ?, bmsi 1/4 ?i 1/4
?a??, pylontechlogoi 1/4 ?



ZXDC48 FB150B1 is the new generation of SmartLi battery, which adopts advanced lithium technology for telecom site. It is compact design with enhanced anti-theft function. New technology enables step-by-step investment for future network evolution. a?c 3U height with excellent cycle life a?c Large charge & discharge current: max. 100A



Notice:EOM Announcement for ZXDC48 FB150C1 Lithium-ion Battery Dear customers: ZTE hereby solemnly informs you that the EOM date of ZXDC48 FB150C1 Lithium-ion Battery is July 20, 2022. and the EOL plan is shown in the following table. After the EOM date, ZTE will no longer accept orders of this product. You can purchase spare parts before LTBS.



Verify that the charging of the ZXDC48 FB101 is proper. If any of the following situations occurs, charge the ZXDC48 FB101 in time: a The ZXDC48 FB101 is over-discharged and over-discharging protection occurs. a The ZXDC48 FB101 is often undercharged. a The ZXDC48 FB101 is stopped being used or stored for more than three months.



Notice:EOM Announcement for ZXDC48 FB100B1 Lithium-ion Battery Dear customers: ZTE hereby solemnly informs you that the EOM date of ZXDC48 FB100B1 Lithium-ion Battery is July 20, 2022. and the EOL plan is shown in the following table.After the EOM date, ZTE will no longer accept orders of this product. You can purchase spare parts before LTBS.



Data Sheet - ZXDC48 FB150C1 Lithium-ion Battery_20190918_787 - Free download as Powerpoint Presentation (.ppt / .pptx), PDF File (.pdf), Text File (.txt) or view presentation slides online. The ZTE ZXDC48 FB150C1 lithium-ion battery is designed for backup or cycle use with a capacity of 150Ah. It has a large charge and discharge current of up to a?|



zxdc48 fb100b35g48v100ah,,,a??zxdc48
fb100b35g48v100aha??:,,:,:zxdc48



i 1/4 ?zxdc48 fb50b1 i 1/4 ? i 1/4 ? zxdc48 fb50b1
202731 a?? , i 1/4 ?i 1/4 ?a??a??800i 1/4 ?i 1/4
?a??i 1/4 ?a??



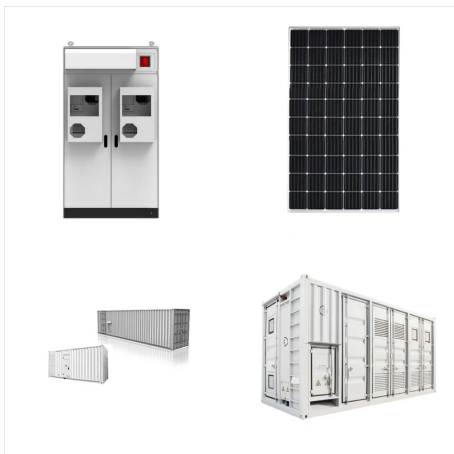
ZXDC48 FB100B3 48V100AH,,,a??ZXDC48
FB100B3 48V100AHa??:,,:,:CE,-20-+55,:ZXDC48
FB100B3



Este documento proporciona instrucciones de instalacion para el sistema de alimentacion CC ZXDU68 W301 (V6.0R02M01) y la bateria ZXDC48 FB100B3. Describe la estructura y componentes del sistema, incluida una figura que muestra la configuracion interna tipica. Tambien resume las dimensiones generales del sistema y proporciona instrucciones de a?|



Seri : ZXDC48-FB100B3 Kapasitas battery : 48v 100Ah Produksi tahun : 2023 Nominal charging voltage : 54volt cocok untuk backup, PLTS dll. - silahkan chat kami untuk detailnya atau jika ingin menggunakan kargo lain - jika produk statusnya pre-order, brarti dalam proses re-stok dan tetap bisa di order, barang akan dikirim saat sudah ready stok



ZXDC48 FB100B34800Wh
48V100AH,,,a??ZXDC48 FB100B34800Wh
48V100AHa???:,,:ccc,:ZXDC48
FB100B3a??ZXDC48FB100B34800Wh



The ZXDC48 FP50A is applicable to outdoor base stations installed in pole-mounted mode or wall-mounted mode, providing backup power supplies to communication equipment (such as access-network equipment, remote office a?)



Table4-1 ZXDC48 FP50A System Maintenance Contents Type Item Content Daily Environment Maintain a good installation environment, avoid direct light or other maintenance radiation for a long period of time, and prevent water, other liquids, dust and dirt from entering. Troubleshooting If a fault alarm is raised, handle the fault immediately in in



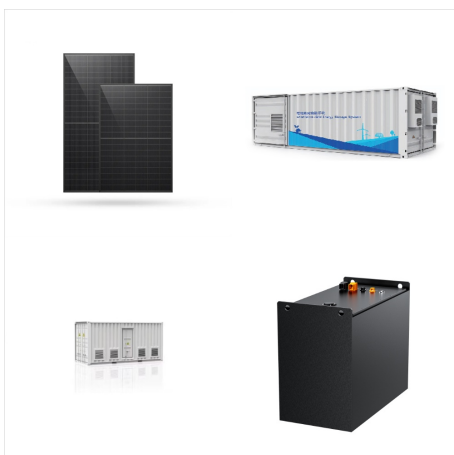
A empresa tambem traz para o mercado a bateria de litio de 100 A ZXDC48 FB100B3 | RE785, que garante o funcionamento dos equipamentos mesmo com falta de energia eletrica. Os produtos podem trabalhar em conjunto e podem ser gerenciados de forma remota.



Notice:EOM Announcement for ZXDC48 FB150C1 Lithium-ion Battery ZXDC48 FB150B1 Lithium-ion Battery. If you have any questions about the EOL plan, contact ZTE's local customer representatives or obtain further information through the ZTE service website. ZTE Corporation.



ZXDC48 FB100B34800Wh,,,a??ZXDC48 FB100B34800Wha??:,,:ccc,:55,:ZXDC48 FB100B3



ZTE ZXDC48 FB500(III) lithium-ion battery is designed for various scenarios such as good grid or poor grid for backup or reuse.. ZXDC48 FB500(III) Technical Parameters Item Parameters Rated capacity 50Ah(C3,25°C,cut-off voltage 44V) Energy storage 2560Wh Nominal voltage 51.2V



BMS ZTE ZXDC48-FB100B3 normal untuk 15s 48v 100Ah produksi th 2023 copotan dari batre normal tidak alarm nominal charge voltage 56v BMS Huawei ESM-48100U2 15s 48v 100Ah kondisi ALARM produksi th 2021 nominal charge voltage 54v silahkan chat kami untuk detailnya.
Rekomendasi Produk Terkait.



The ZTE ZXDC48 FB150C1 lithium-ion battery is designed for backup or cycle use with a capacity of 150Ah. It has a large charge and discharge current of up to 100A and can connect up to 15 batteries in parallel. The a?|