

What is a Unifi network backup?

UniFi Network backups contain UniFi Network settings and device configurations. These are only needed by users with a Gen1 CloudKey, or those self-hosting the UniFi Network Server on a Windows/macOS/Linux machine. All users with a dedicated UniFi Console are encouraged to use the comprehensive System Config Backup.

How do I make a backup of my unifi device?

Access and log into your UniFi OS Console at [unifi.ui.com](https://unifi.ui.com) or locally via its IP address. Go to System Settings > Advanced and enable the Back up Device toggle if disabled. Click Download to download your backup file. You can also use the Backup Scheduler to schedule creating a backup at a certain occurrence and time.

What is a backup of the unifi controller?

Let's dive in! The UniFi Controller manages your UniFi network, including device settings, network configurations, and user profiles. A backup of the UniFi Controller ensures that you can quickly restore your network to a previous state or migrate your data between UniFi Controllers.

How do I backup my unifi controller to the cloud?

In the manual way to backup our Unifi Controller to the cloud (or other location). Rclone is a command-line program that helps you with managing files in cloud storage locations. With Rclone we will make the connection to the storage of our choice and set up the sync between the backups created by our Unifi

Why is a backup important in unifi & networking environments?

Published on November 20, 2023 by Iron (edited on June 27, 2024) Backups in UniFi and networking environments are super important for the safety of your network. Especially for disaster recovery and maintaining continuity. A backup enables quick restoration of your network in case of hardware failures, software issues, or security breaches.

Does USP-RPS support unifi gear?

The USP-RPS provides that functionality for supported UniFi gear, as their builtin PSUs would go on circuit/UPS A, and the RPS into B. However, I shudder to think of any mission-critical environment with infrastructure like separate power feeds and UPS units running Ubiquiti gear (maybe their switches, but certainly not the routers or cameras).



Just a backup power supply. I believe the intent is to plug the RPS into a battery backup, alternate power source, etc. There is evidence that Ubiquiti is working on batteries to add to the RPS, ???



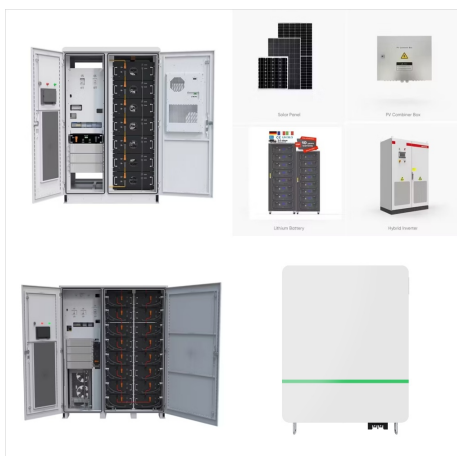
The USP-RPS continually monitors all attached devices. In the event of an internal AC/DC power supply failure, failover is automatic so your network continues to operate with no interruption in service. With a 950W DC power budget, the USP-RPS can protect a variety of high-power devices, including UniFi PoE switches.



Power Backup Ready. No power interruptions for UNAS Pro. 0. 9. 9. 9. UNAS Pro. UNAS Pro. Data protection with RAID storage technology. UniFi Power Backup ready. 1.3" touchscreen for management. Buy Now. UNAS Pro. 2U rack-mount NAS with (7) 2.5/3.5" drive bays and 10 Gbps performance designed for large-scale file storage and sharing. Overview



The UniFi SmartPower Redundant Power System, model USP-RPS, is a proprietary redundant power system designed to protect up to six UniFi SmartPower supported devices from sudden power supply module failure. The USP-RPS continually monitors all attached devices. In the event of an internal AC/DC power supply failure, fai



I am wholly unfamiliar with DC backups though. Looks like it's a second plug from the backup box to the equipment. Does the equipment get plugged into the AC supply still, or is this backup meant to replace AC supply, and the equipment's own PSU, entirely? In the installation guide, both pieces of equipment appear to have AC plugs.



Power Backup. USP-RPS ???1,465.00 ???.???.???  
950W redundant power supply for rack-mounted UniFi devices. 950W redundant power supply for rack-mounted UniFi devices. Visiting us from ?  
Continue to United States Store. Select Other Country / Region. United Arab ???



Ubiquiti Power Backup USP-RPS. We use cookies to enhance your experience, for analytics, and to show you products that may be of interest to you. The UniFi(R) SmartPower Redundant Power System, model USP-RPS, is a proprietary redundant power system designed to protect up to six UniFi SmartPower supported devices from sudden power supply



LTE Backup Internet with UniFi. Play. LTE Backup Pro. U-LTE-Backup Pro. \$279.00. Seamless internet failover for UniFi gateways. Bring your own AT&T nano-SIM for LTE data. UniFi Cloud Gateways. Switching. WiFi. Camera Security. Door Access. CloudKeys & Gateways. Power Tech. Integrations. Accessories. Internet Solutions. Cable Internet



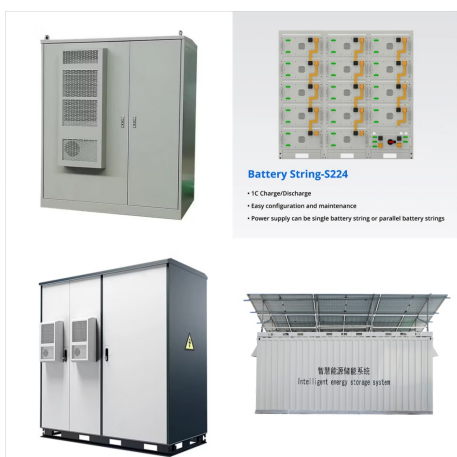
I have the Unifi equipment in my garage protected by this UPS: CyberPower CP550SLG Standby UPS System, 550VA/330W, 8 Outlets. So, during a power outage yesterday, the UPS provided power to the entire setup for ~25 minutes before power came back on.



Pretty sure you're talking about the RPS, which is a "redundant power supply." It is not a UPS, which is an "uninterruptible power supply" - which comes with batteries. AFAIK Unifi does not make a UPS. RPS is designed to provide power in case the equipment's on-board power supply unit fails, not if your incoming power fails.



Requires a UniFi Cloud Gateway or UniFi Gateway. Embedded AT& T SIM\* Flexible mounting (1) GbE PoE port\*\* Powered using PoE. RP-SMA connector for optional external antenna. 1.54" status display \*Works with the AT& T network. Subscription plans are \$15/month for 1 GB of data, plus \$10 for each additional GB. \*\*PoE+ required for PoE passthrough.



Requires a UniFi Cloud Gateway or UniFi Gateway. Bring your own nano-SIM for LTE data. Flexible mounting (1) GbE PoE port\* Powered using PoE. RP-SMA connector for optional external antenna. 1.54" status display \*PoE+ required for PoE passthrough.



Buy Ubiquiti Networks UniFi SmartPower USP-RPS Redundant Power System featuring For UniFi SmartPower Devices, 6 x UniFi SmartPower DC Output Ports, 1 x Gigabit Ethernet Port, 1.3" Color LCM Touchscreen Display, 950W Power Budget, Desktop & Rack Mountable, Includes Rackmount Kit, Supports UniFi Network Controller. Review Ubiquiti Networks null



With a 950W DC power budget, the USP-RPS can protect a variety of high-power devices, including UniFi PoE switches. An integrated 1.3" color touchscreen LCM displays system information for convenient monitoring. Features (6) USP DC output ports (1) Ethernet port 1U Rackmountable (kit included)



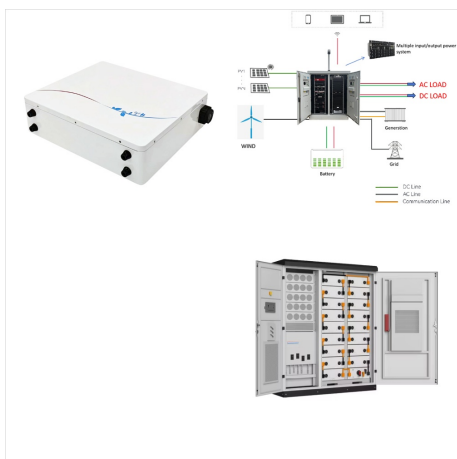
950W redundant power supply for rack-mounted UniFi devices. 950W redundant power supply for rack-mounted UniFi devices. Cloud Gateways. Switching. WiFi. Camera Security. Door Access. Integrations. Power Backup. USP-RPS. Datasheet. In The Box. Marketing Images. Installation Guide. Zoom in. Zoom in. Mechanical; Dimensions: 442.4 x 325.6 x 43.



Access the UniFi Controller: Log into your UniFi Controller using a web browser.; Navigate to Settings: Once logged in, click on the "Settings" gear icon in the lower-left corner of the dashboard.; System Settings: Within the Settings menu in the sidebar, find and select the "System" section.; Backup Options: In the System settings, navigate to the "Backup" section.



Dedicated UniFi Consoles (Dream Machines, CloudKeys, Network Video Recorders, etc) offer System Config Backups, which include all OS, Application, and Device configurations. Backups can be created and restored in the Console section of the Control Plane.. For users with a Gen1 CloudKey, or those self-hosting the UniFi Network Server on a Windows/macOS/Linux ???



Power Backup. USP-RPS. ?305.00. 950W redundant power supply for rack-mounted UniFi devices. 950W DC power availability (6) DC SmartPower ports. 950W redundant power supply for rack-mounted UniFi devices. Visiting us from ? Continue to United States Store. Select Other Country / Region. United Kingdom. UniFi. UISP. AmpliFi. What's New.



It's meant to provide a secondary power supply to the devices it's compatible with. So if a switch or console's PSU fails, the RPS will provide power to it until the bad PSU can be replaced. If ???



4 Battery Backup & Surge and 3 Surge Only. Most 2U UPS's from everyone would have 8 outlets, 4 that are Backup & Surge and 4 Surge only!!! So that you have to keep in mind. That only 4 of your devices can be powered up when the power goes out. Home Assistant users with UniFi Protect Integration, PLEASE READ Suggestions for UPS power



Generate a New Backup. To generate a new UniFi backup file (.unifi), on your UniFi OS Console: Access and log into your UniFi OS Console at [unifi.ui](https://unifi.ui) or locally via its IP address. Go to System Settings > Advanced and enable the Back up Device toggle if disabled. Click Download to download your backup file.



The UniFi(R) SmartPower Redundant Power System, model USP-RPS, is a proprietary redundant power system designed to protect up to six UniFi SmartPower supported devices from sudden power supply module failure. The USP-RPS continually monitors all attached devices. In the event of an internal AC/DC power supply failure, failover is automatic so your network continues to ???



I have an APC UPS which works fine with my UDMPPro. I have a bunch of them in my house, one for my server, one for the UDMPPro and an Unifi Aggregator, and one for Google Fiber modem (having recently discovered that Google's fiber drop for ???