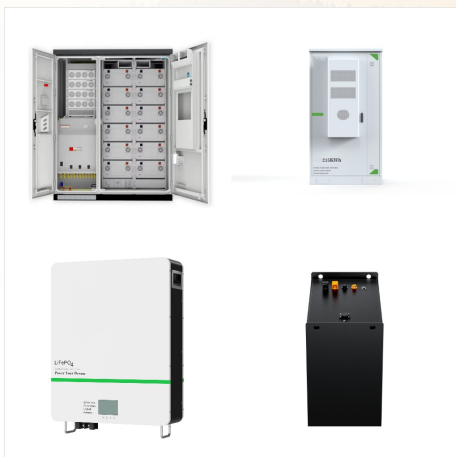




US 31DC XC2. Chemistry: AGM: AGM: AGM:
Flooded Lead-Acid: Flooded Lead-Acid: Flooded
Lead-Acid: Dimensions: 12.05???L x 6.61???W x
9.17???H: U.S. Battery Manufacturing Co. 717
North Belair Road Evans, Georgia 30809 (706)
868-0533 (706) 860-9342 Fax GA, Augusta office
U.S. Battery Manufacturing Co. 1895 Tobacco Road



US 12V XC2 & US 12VXZ XC2 Cover Options. US
12V XC2 & US 12VXZ XC2 Cover Options. US 12V
XC2 Cover. US 12VXZ Cover. Terminal Options:
Standard: Molded-in UTL. Optional: UT. Off-set "s"
Dual. U.S. Battery Manufacturing Co. 1895
Tobacco Road Augusta, Georgia 30906 (800)
522-0945 (706) 790-0218



US AGM 12V240. Chemistry: Flooded Lead-Acid:
Flooded Lead-Acid: Flooded Lead-Acid: AGM:
Dimensions: 15.625???L x 7.0625???W x
14.625???H: U.S. Battery Manufacturing Co. 717
North Belair Road Evans, Georgia 30809 (706)
868-0533 (706) 860-9342 Fax GA, Augusta office
U.S. Battery Manufacturing Co. 1895 Tobacco Road

US BATTERY MANUFACTURING CO LITHUANIA



Our US AGM 6V27 battery is designed to deliver reliable power for marine, RVs, floor scrubbers, lifts, and golf carts. CONTACT US. SEARCH. EN. ZH; ES; FR; DE; IT; About Us. About Us. U.S. Battery Manufacturing Co. 1675 Sampson ???



US 8VGCi XC2 Cover Option. US 8VGCi XC2 Cover Option (Compatible with select OEM watering kits) Terminal Options: Standard: MOLDED-IN UTL. Optional: Off-set "s" Large "L" U.S. Battery Manufacturing Co. 1895 Tobacco Road Augusta, Georgia 30906 (800) 522-0945 (706) 790-0218



Contact us for more information! We are always here to help. We will respond to your inquiry in a timely manner. If you do not want to fill out our form, we also accept phone calls and are standing by to assist you in any way that we can. U.S. Battery Manufacturing Co. 1895 Tobacco Road Augusta, Georgia 30906 (800) 522-0945 (706) 790-0218

US BATTERY MANUFACTURING CO LITHUANIA



US 1800 XC2. 20 Hour Rate: 208. VIEW
PRODUCT. US 2000 XC2. 20 Hour Rate: 220.
VIEW PRODUCT. US 2200 XC2. 20 Hour Rate:
232. VIEW PRODUCT. US 125 XC2. 20 Hour Rate:
242. U.S. Battery Manufacturing Co. 717 North
Belair Road Evans, Georgia 30809 (706) 868-0533
(706) 860-9342 Fax GA, Augusta office U.S. Battery
Manufacturing Co. 1895 Tobacco



US 1800 XC2. 20 Hour Rate: 208. VIEW
PRODUCT. US 2000 XC2. 20 Hour Rate: 220.
VIEW PRODUCT. US 2200 XC2. 20 Hour Rate:
232. VIEW PRODUCT. US 125 XC2. 20 Hour Rate:
242. U.S. Battery Manufacturing Co. 717 North
Belair Road Evans, Georgia 30809 (706) 868-0533
(706) 860-9342 Fax GA, Augusta office U.S. Battery
Manufacturing Co. 1895 Tobacco



US AGM 2000. Chemistry: Flooded Lead-Acid:
Flooded Lead-Acid: Flooded Lead-Acid: Flooded
Lead-Acid: Flooded Lead-Acid: AGM: Dimensions:
U.S. Battery Manufacturing Co. 717 North Belair
Road Evans, Georgia 30809 (706) 868-0533 (706)
860-9342 Fax GA, Augusta office U.S. Battery
Manufacturing Co. 1895 Tobacco Road

US BATTERY MANUFACTURING CO LITHUANIA



About Us. Who We Are. Mission Statement. Industries We Serve. Company History. Meet the Team. Working at U. S. Battery. Products. By Application. Aerial Work Platform. U.S. Battery Manufacturing Co. 1895 Tobacco Road Augusta, Georgia 30906 (800) 522-0945 (706) 790-0218 (706) 772-7756 Fax.



US 305 XC2 Voltage 6-Volt Deep Cycle ???
Sweeper/Scrubber, Multi-purpose Dimensions
Length: 11 7/8" (302mm) Width: 7 1/8" (181mm) Height: 14 5/8" (371mm) Type Flooded Lead Acid (FLA) non-sealed. Application Wherever Deep Cycle 6-volt batteries are needed. Data 20 Hour Rate: 310Minutes of Discharge @ 75 Amps: 195Minutes of Discharge @ 25 Amps: 715 Case ???



Batteries fiables ? d?charge profonde de U.S.
Battery Mfg Co. Les batteries de haute qualit? 6V, 8V, 12V, 24V et 48V fournissent une puissance sur laquelle vous pouvez compter ! US AGM 2224 (taux de 20 heures = 225ah) US 2200 XC2 (taux de 20 heures = 232ah) U.S. Battery Manufacturing Co. 1675 Sampson Avenue Corona, Californie 92879

US BATTERY MANUFACTURING CO LITHUANIA



U.S. Battery Mfg. Co. is committed to providing our customers and global partners with the highest quality, most dependable deep-cycle batteries available. With a History of excellence, we feel confident our line of world-class products will ???



Tina Hua Yulian is based in Zhuhai, China and is responsible for developing US Battery business throughout Asia. U.S. Battery Manufacturing Co. 717 North Belair Road Evans, Georgia 30809 (706) 868-0533 (706) 860-9342 Fax GA, ???



Discover the ultimate power solution with our US AGM 24, battery designed for marine, RV, and floor scrubbers. CONTACT US. SEARCH. EN. ZH; ES; FR; DE; IT; About Us. About Us. Who We Are. Mission Statement. Industries We ???

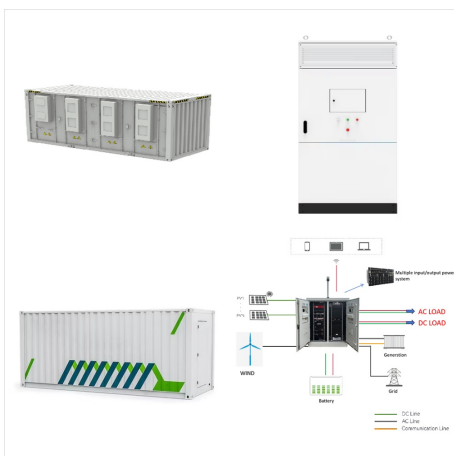
US BATTERY MANUFACTURING CO LITHUANIA



US L16HC XC2. Chemistry: AGM: Flooded
Lead-Acid: Flooded Lead-Acid: Flooded Lead-Acid:
Dimensions: 11.61???L x 7???W x 16.65???H:
Without Handles U.S. Battery Manufacturing Co.
717 North Belair Road Evans, Georgia 30809 (706)
868-0533 (706) 860-9342 Fax GA, Augusta office
U.S. Battery Manufacturing Co. 1895 Tobacco Road



US 1800 XC2. 20 Hour Rate: 208. VIEW
PRODUCT. US 2000 XC2. 20 Hour Rate: 220.
VIEW PRODUCT. US 2200 XC2. 20 Hour Rate:
232. VIEW PRODUCT. US 125 XC2. 20 Hour Rate:
242. U.S. Battery Manufacturing Co. 717 North
Belair Road Evans, Georgia 30809 (706) 868-0533
(706) 860-9342 Fax GA, Augusta office U.S. Battery
Manufacturing Co. 1895 Tobacco



US 1800 XC2. 20 Hour Rate: 208. VIEW
PRODUCT. US 2000 XC2. 20 Hour Rate: 220.
VIEW PRODUCT. US 2200 XC2. 20 Hour Rate:
232. VIEW PRODUCT. US 125 XC2. 20 Hour Rate:
242. U.S. Battery Manufacturing Co. 717 North
Belair Road Evans, Georgia 30809 (706) 868-0533
(706) 860-9342 Fax GA, Augusta office U.S. Battery
Manufacturing Co. 1895 Tobacco

US BATTERY MANUFACTURING CO LITHUANIA



US 305HC XC2 Voltage 6-Volt Deep Cycle ???
Sweeper/Scrubber, Multi-purpose Dimensions
Length: 11 7/8" (302mm) Width: 7 1/8"
(181mm) Height: 14 5/8" (371mm) Type Flooded
Lead Acid (FLA) non-sealed. Application Wherever
Deep Cycle 6-volt batteries are needed. Data 20
Hour Rate: 340Minutes of Discharge @ 75 Amps:
215Minutes of Discharge @ 25 Amps: 790 Case
???



Discover the power of our US AGM 8D Deep Cycle
Battery, designed for unparalleled endurance and
reliability. CONTACT US. SEARCH. EN. ZH; ES;
FR; DE; IT; About Us. About Us. Who We Are.
Mission Statement. U.S. Battery Manufacturing Co.
1675 Sampson Avenue Corona, California 92879
(800) 695-0945 (951) 371-8090 (951) 371-4671 Fax

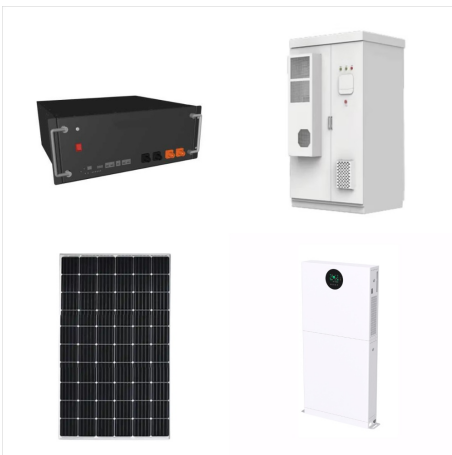


Explore the robust US AGM 31 deep cycle battery,
a maintenance-free 12V sealed solution perfect for
marine, RV, and floor scrubbers. CONTACT US.
SEARCH. EN. ZH; ES; FR; DE; IT; About Us. About
Us. U.S. Battery Manufacturing Co. 1895 Tobacco
Road Augusta, Georgia 30906 (800) 522-0945
(706) 790-0218

US BATTERY MANUFACTURING CO LITHUANIA



US AGM 8V170 Voltage 8-Volt Deep Cycle Sealed AGM Dimensions Length: 10.2" (260mm)Width: 7.17" (182mm)Height: 11.3" (286mm) Weight: 76 lbs (34.5kg) Type Sealed Non-Spillable Lead Acid (AGM) Application Wherever Sealed, LeakProof, Deep Cycle 8-volt batteries are needed. Data 20 Hour Rate: 1805 Hour Rate: 149Minutes of Discharge @ 75 Amps: ???



Get reliable performance with our US AGM 4D deep-cycle battery, designed for marine, RV, and renewable energy applications. CONTACT US. SEARCH. EN. ZH; ES; FR; DE; IT; About Us. About Us. Who We Are. U.S. Battery Manufacturing Co. 1675 Sampson Avenue Corona, California 92879 (800) 695-0945 (951) 371-8090 (951) 371-4671 Fax



US 12VE XC2. 20 Hour Rate: 145. VIEW PRODUCT. US 12VRX XC2. 20 Hour Rate: 155. VIEW PRODUCT. US 185E XC2. 20 Hour Rate: 185. VIEW PRODUCT. US 185 XC2. 20 Hour Rate: 200. U.S. Battery Manufacturing Co. 717 North Belair Road Evans, Georgia 30809 (706) 868-0533 (706) 860-9342 Fax GA, Augusta office U.S. Battery Manufacturing Co. 1895 Tobacco

US BATTERY MANUFACTURING CO LITHUANIA



Zuverlässige Deep-Cycle-Batterien von U.S. Battery Mfg Co. Hochwertige 6V-, 8V-, 12V-, 24V- und 48V-Batterien liefern Energie, auf die Sie sich verlassen können! US AGM 2224 (20-Stunden-Tarif = 225ah) US 2200 XC2 (20-Stunden-Tarif = 232ah) U.S. Battery Manufacturing Co. 1675 Sampson Avenue Corona, Kalifornien 92879 (800) 695-0945



About Us. Who We Are. Mission Statement. Industries We Serve. Company History. Meet the Team. Working at U. S. Battery. Products. By Application. Aerial Work Platform. U.S. Battery Manufacturing Co. 1895 Tobacco Road Augusta, Georgia 30906 (800) 522-0945 (706) 790-0218 (706) 772-7756 Fax.



US 12V XC2 & US 12VXZ XC2 Cover Options. US 12V XC2 & US 12VXZ XC2 Cover Options. US 12V XC2 Cover. US 12VXZ Cover. Terminal Options: Standard: Molded-in UTL. Optional: UT. Off-set "s" Dual. U.S. Battery ???

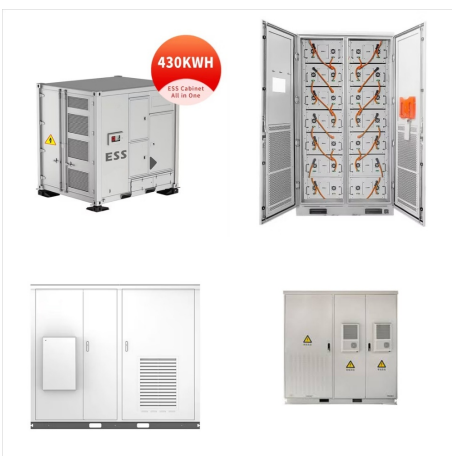
US BATTERY MANUFACTURING CO LITHUANIA



Baterías fiables de ciclo profundo de U.S. Battery Mfg Co. Baterías de alta calidad de 6 V, 8 V, 12 V, 24 V y 48 V que proporcionan una potencia fiable. US AGM 2224 (tarifa 20hr = 225ah) US 2200 XC2 (tarifa de 20 horas = 232ah) US AGM L16 U.S. Battery Manufacturing Co. Avenida Sampson 1675 Corona, California 92879 (800) 695-0945



U.S. Battery Manufacturing Co. Avenida Sampson 1675 Corona, California 92879 (800) 695-0945 (951) 371-8090 (951) 371-4671 Fax GA, oficina de Evans U.S. Battery Manufacturing Co. 717 North Belair Road Evans, Georgia 30809 (706) 868 ???

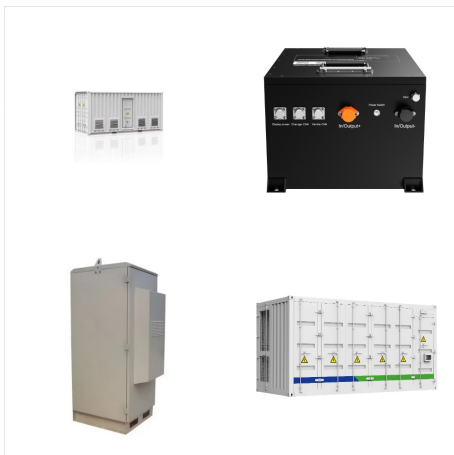


US AGM 12V150 Voltage 12-Volt Deep Cycle Sealed AGM Dimensions Length: 12.87" (327mm) Width: 7.09" (180mm) Height: 10.79" (274mm) Weight: 93 lbs (42.2kg) Type Sealed Non-Spillable Lead Acid (AGM) Application Wherever Sealed, LeakProof, Deep Cycle 12-volt batteries are needed. Data 20 Hour Rate: 1505 Hour Rate: 133Minutes of Discharge @ 75 Amps: ???

US BATTERY MANUFACTURING CO LITHUANIA



Discover the powerful US AGM 2000, a 6V battery designed for marine, RV, golf carts, and more. Experience the reliability of this AGM battery. CONTACT US. SEARCH. EN. ZH; ES; FR; DE; IT; About Us. About Us. U.S. Battery ???



U.S. Battery Mfg. Co. AGM Limited Liability Warranty The U.S. Battery (USB) two-year warranty covers any AGM battery 85 ampere hour capacity or higher, six and twelve volt models. The warranty covers batteries that become unusable and unserviceable due to defects in material and/or workmanship.