



Could flywheels be the future of energy storage?

Flywheels, one of the earliest forms of energy storage, could play a significant role in the transformation of the electrical power system into one that is fully sustainable yet low cost.

How long does a flywheel energy storage system last?

Flywheel energy storage systems have a long working life if periodically maintained (>25 years). The cycle numbers of flywheel energy storage systems are very high (>100,000). In addition, this storage technology is not affected by weather and climatic conditions. One of the most important issues of flywheel energy storage systems is safety.

Can small applications be used instead of large flywheel energy storage systems?

Small applications connected in parallel can be used instead of large flywheel energy storage systems. There are losses due to air friction and bearing in flywheel energy storage systems. These cause energy losses with self-discharge in the flywheel energy storage system.

What are the disadvantages of Flywheel energy storage systems?

One of the most important issues of flywheel energy storage systems is safety. As a result of mechanical failure, the rotating object fails during high rotational speed poses a serious danger. One of the disadvantages of these storage systems is noise. It is generally located underground to eliminate this problem.

Why do flywheel energy storage systems have a high speed?

There are losses due to air friction and bearing in flywheel energy storage systems. These cause energy losses with self-discharge in the flywheel energy storage system. The high speeds have been achieved in the rotating body with the developments in the field of composite materials.

Are flywheel energy storage facilities suitable for continuous charging and discharging?

The energy storage facility provided by flywheels are suitable for continuous charging and discharging options without any dependency on the age of the storage system. The important aspect to be taken note of in this regard is the ability of FES to provide inertia and frequency regulation.



China's massive 30-megawatt (MW) flywheel energy storage plant, the Dinglun power station, is now connected to the grid, making it the largest operational flywheel energy storage facility ever built.



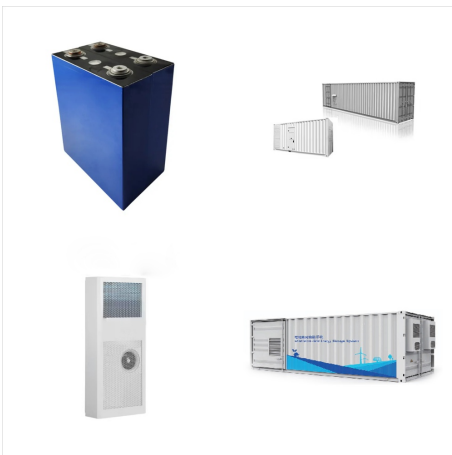
This paper presents the structure of Flywheel Energy Storage System (FESS) and proposes a plan to use them in micro-grid systems as an energy "regulation" element. The results of the ???



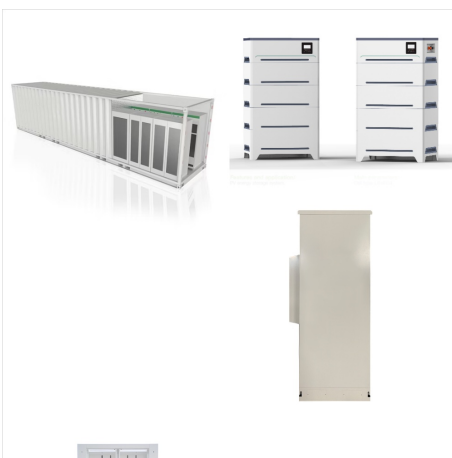
Thanks to the unique advantages such as long life cycles, high power density, minimal environmental impact, fast response and voltage stability, flywheel energy storage systems (FESS) is gaining attention recently. This article provides an overview of foreign developments of FESS used at autonomous energy systems with renewable energy sources.



This paper presents an overview of the flywheel as a promising energy storage element. Electrical machines used with flywheels are surveyed along with their control techniques. Loss minimization and bearing system development are introduced.



Energy storage has risen to prominence in the past decade as technologies like renewable energy and electric vehicles have emerged. However, while much of the industry is focused on conventional battery ???



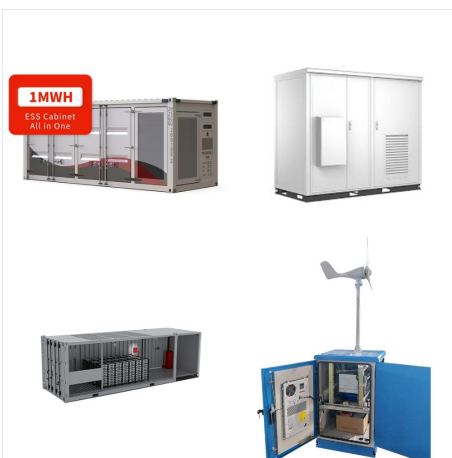
A more advanced use for this wheel is a flywheel energy storage system which is used to generate clean and environment-friendly energy. This study focusses on optimizing aluminium flywheel and come up with an RPM imposes minimum stress on flywheel and in addition could yield maximum efficiency. At the end it was concluded that low RPM ranging



Flywheels are one of the world's oldest forms of energy storage, but they could also be the future. This article examines flywheel technology, its benefits, and the research from Graz University of Technology.



In electric vehicles (EV) charging systems, energy storage systems (ESS) are commonly integrated to supplement PV power and store excess energy for later use during low generation and on-peak periods to mitigate utility grid congestion. Batteries and supercapacitors are the most popular technologies used in ESS. High-speed flywheels are an emerging ???



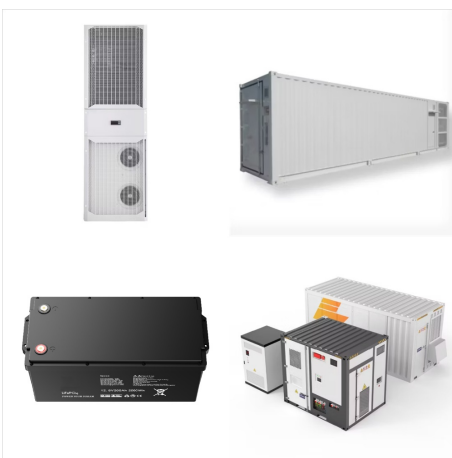
The flywheel schematic shown in Fig. 11.1 can be considered as a system in which the flywheel rotor, defining storage, and the motor generator, defining power, are effectively separate machines that can be designed accordingly and matched to the application. This is not unlike pumped hydro or compressed air storage whereas for electrochemical storage, the ???



The physics of flywheels. Things moving in a straight line have momentum (a kind of "power" of motion) and kinetic energy (energy of motion) because they have mass (how much "stuff" they contain) and velocity (how fast they're going). In the same way, rotating objects have kinetic energy because they have what's called a moment of inertia (how much "stuff" ???

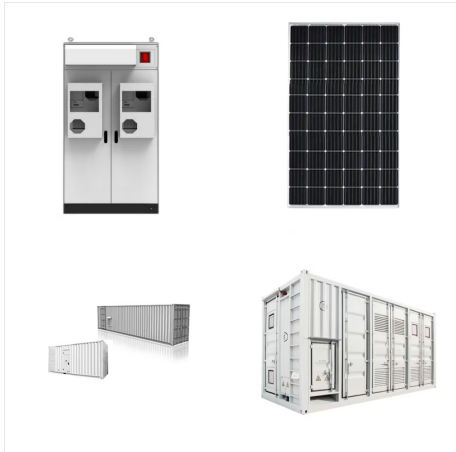


2.1 Composition of Flywheel Energy Storage System. The flywheel energy storage system can be roughly divided into three parts, the grid, the inverter, and the motor. As shown in Fig. 1, the inverter is usually composed of a bidirectional DC-AC converter, which is divided into two parts: the grid side and the motor side. During charging and discharging, the motor side and the grid ???

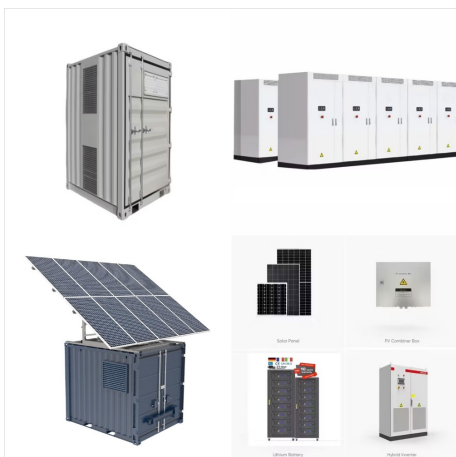


OverviewMain componentsPhysical characteristicsApplicationsComparison to electric batteriesSee alsoFurther readingExternal links

VANUATU FLYING WHEEL ENERGY STORAGE



Flywheels, one of the earliest forms of energy storage, could play a significant role in the transformation of the electrical power system into one that is fully sustainable yet low cost. This article describes the major components that make up a flywheel configured for electrical storage and why current commercially available designs of steel



Flywheel energy storage has the advantages of high power density, long service life and environmental friendliness. Its shortcomings are mainly low energy storage density and high self-discharge rate. The system adopts high-strength glass fiber/carbon fiber multilayer composite rim high-strength metal wheel Valley, permanent magnet DC



Pic Credit: Energy Storage News A Global Milestone. This project sets a new benchmark in energy storage. Previously, the largest flywheel energy storage system was the Beacon Power flywheel station in Stephentown, New York, with a capacity of 20 MW. Now, with Dinglun's 30 MW capacity, China has taken the lead in this sector.. Flywheel storage ???



Flywheel energy storage (FES) works by accelerating a rotor to a very high speed and maintaining the energy in the system as rotational energy. When energy is extracted from the system, the flywheel's rotational speed is reduced as a consequence of the principle of conservation of energy ; adding energy to the system correspondingly results in



FESS has a unique advantage over other energy storage technologies: It can provide a second function while serving as an energy storage device. Earlier works use flywheels as satellite attitude-control devices. A review of flywheel attitude control and energy storage for aerospace is given in [159].



This paper presents the structure of Flywheel Energy Storage System (FESS) and proposes a plan to use them in micro-grid systems as an energy "regulation" element. The results of the analysis show the role of FESS and the principles that govern its operation in the micro-grid, as well as the applications of FESS in the fields of science and



Fig. 4 illustrates a schematic representation and architecture of two types of flywheel energy storage unit. A flywheel energy storage unit is a mechanical system designed to store and release energy efficiently. It consists of a high-momentum flywheel, precision bearings, a vacuum or low-pressure enclosure to minimize energy losses due to friction and air resistance, a ???



NASA G2. ? 1/4 ?? 1/4 ? Flywheel energy storage, ? 1/4 ? FES? 1/4 ?, ? 1/4 ?? 1/4 ?, ??? , , ? 1/4 ? ,



Flywheel energy storage, also known as kinetic energy storage, is a form of mechanical energy storage that is a suitable to achieve the smooth operation of machines and to provide high power and energy density. In flywheels, kinetic energy is transferred in and out of the flywheel with an electric machine acting as a motor or generator

VANUATU FLYING WHEEL ENERGY STORAGE



Using energy storage technology can improve the stability and quality of the power grid. One such technology is flywheel energy storage systems (FESSs). Compared with other energy storage systems, FESSs offer numerous advantages, including a long lifespan, exceptional efficiency, high power density, and minimal environmental impact.



Flywheel Energy Storage Systems (FESS) work by storing energy in the form of kinetic energy within a rotating mass, known as a flywheel. Here's the working principle explained in simple way, Energy Storage: The system features a flywheel made from a carbon fiber composite, which is both durable and capable of storing a lot of energy.