

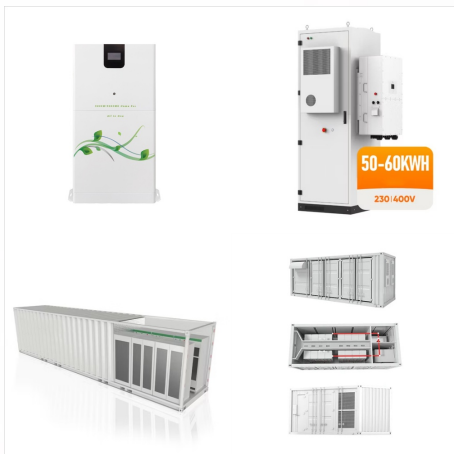


KOHLER, Wis. ??? September 17th, 2024 ???

Kohler Energy today officially rebranded under its new corporate name Rehlko (pronounced RELL-koh), marking a major milestone in the company's 100 -plus-year history delivering innovative, resilient energy solutions that provide independence, agility, and security to mission-critical infrastructure



KOHLER, Wis. ??? September 17, 2024 ??? Kohler Energy today officially rebranded under its new corporate name Rehlko (pronounced REL-co), marking a major milestone in the company's 100-plus-year history delivering innovative, resilient energy solutions that provide independence, agility, and security to mission-critical infrastructure



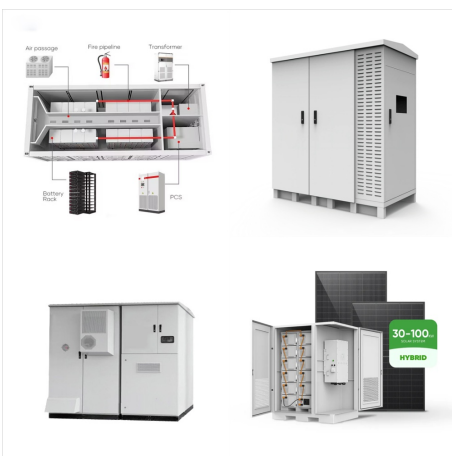
Wallis & Futuna, located in the South Pacific, comprises two main inhabited islands and a number of smaller islets, with a population of about 11,000 individuals. The population is dispersed unevenly, with most residents living on the Wallis Island.



Kohler continues to invest in new product development to drive down CO2 emissions through low carbon fuels, improved engine efficiency and power density, EV controls, and grow its portfolio of high technology solutions.



Kohler is the only generator set manufacturer to provide factory-built enclosures in this range, and supply a completely integrated system from a single facility. The company is committed to developing cleaner energy solutions with generators that lead the industry in power density and fuel economy, and contribute to a lower environmental impact.



Kohler continues to invest in new product development to drive down CO2 emissions through low carbon fuels, improved engine efficiency and power density, EV controls, and grow its portfolio of high technology solutions.

WALLIS AND FUTUNA KOHLER CO POWER SYSTEMS



KOHLER, Wis. ??? September 17th, 2024 ???

Kohler Energy today officially rebranded under its new corporate name Rehlko (pronounced RELL-koh), marking a major milestone in the company's ???