

Which planet is closest to Earth?

Interestingly, while Venus moves closer to Earth than any other planet, the average distance between Earth and Venus is actually larger than the average distance between Earth and Mercury. Therefore, the title for closest planet to us goes to both Mercury and Venus, depending on where the planets are in their respective orbits.

Which planet is closest to the Sun?

Mercury is the closest planet to the Sun, orbiting at an average distance of 36 million miles (58 million kilometers). Mercury is 57 million miles closer to the Sun than Earth. Pluto is the largest dwarf planet in our solar system, just slightly larger than Eris, at number two.

Is Venus the closest planet to Earth?

But as an article in Physics Today points out, over half the time Venus is not the nearest planet; Mercury is. In fact, the scientists behind the article crunched the numbers and found that on average, Mercury is the closest planet not only to Earth but to every other planet in the solar system as well. Trippy.

Which planets lie in a straight line from the Sun?

This means that it is rare for Mercury, Venus and Earth to all lie in a straight line from the sun outward. At times, the sun is directly between Earth and other planets. Venus is the closest planet to Earth under most circumstances. Venus orbits the sun at a distance of about 67 million miles, while the Earth orbits at about 93 million miles.

What are the four closest planets to the Sun?

Terrestrial planets include the four closest planets to the Sun located between the Sun and the asteroid belt; Mercury, Venus, Earth, and Mars. Astronomers who use the geophysical definition of a planet would also include the Moon as a terrestrial planet. Terrestrial planets are planets with a solid surface, often made up of rock or metals.

Is Mercury closer to Earth than Venus?

Most of the time, Mercury is a little bit closer to Earth than Venus. What Is The Closest Planet To Earth? The

WHAT ARE THE CLOSEST PLANETS TO EARTH



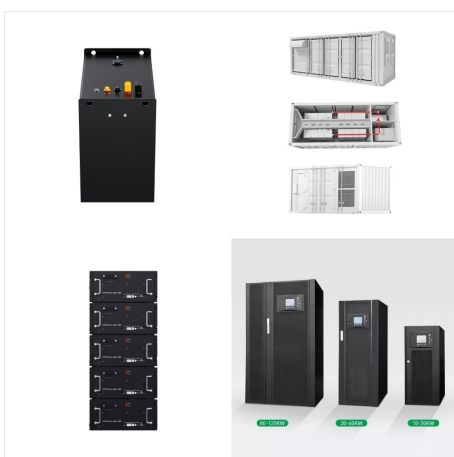
closest planet to Earth varies between Mercury and Venus, yet Venus has the closest approach to Earth at 24-million miles (38-million kilometres).



The planets today shows you where the planets are now as a live display - a free online orrery. In this solar system map you can see the planetary positions from 3000 BCE to 3000 CE, and also see when each planet is in retrograde.



In such cases, Mercury may become the closest planet, with distances ranging from 82 to 217 million kilometers. Mercury is the nearest planet to Earth in this position. Its distance is shortened to 82 million kilometers. As can be observed, the situation is not entirely clear-cut to assert with confidence that Venus is the closest planet to Earth.

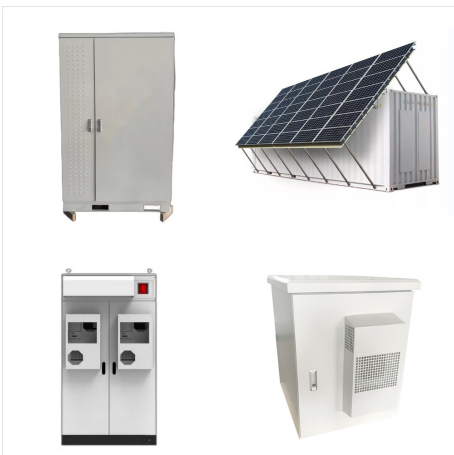


While Earth is only the fifth largest planet in the solar system, it is the only world in our solar system with liquid water on the surface. Just slightly larger than nearby Venus, Earth is the biggest of the four planets closest to the Sun, all of which are made of rock and metal. Namesake. Namesake. The name Earth is at least 1,000 years old.

WHAT ARE THE CLOSEST PLANETS TO EARTH



UNSW Australia astronomers have discovered the closest potentially habitable planet found outside our solar system so far, orbiting a star just 14 light-years away. 4.3 and 5.2 times that of Earth, respectively. The larger outer planet falls just outside the outer boundary of the habitable zone and is also likely to be rocky, while the



Named Proxima b, the planet is just 4.25 light-years away, and there were early signs that it's rocky just like Earth, and is the right distance from its star to sustain liquid water. Now scientists have found evidence that it could in fact be "covered" in oceans of liquid water.



Asking which planet is the closest to Earth is actually something of a trick question ??? the closest planet to Earth can change depending on the day, month, or even year. Rather than stating a time frame to describe when a given planet will be closest to our own planet, it is actually most accurate to describe a position that would indicate

WHAT ARE THE CLOSEST PLANETS TO EARTH



Well, again, the answer to that is not exactly straightforward, as it tends to change. Sometimes, Mars is the closest planet to Earth. The closest that Mars comes to Earth in its orbit is 33.9 million miles away from it. In order to get an answer that is not subject to change, we must look at what planet is closest to the Earth on average.



Earth. The third closest planet to the Sun. Earth is at an average distance of 150 million km / 93 million mi or 1 AU away from the Sun. It only has one moon and several other smaller satellites. Earth is the biggest terrestrial planet having a diameter of 12.760 km / 7.926 mi. Surface temperatures on Earth are around 14 degrees Celsius.



This list of nearest terrestrial exoplanet candidates contains possible terrestrial ("rocky") exoplanets spaced at a distance of up to 50 light-years from the Solar System, ordered by increasing distance. [1] [2] [3] They may be composed primarily of silicate rocks and/or metals. Within the Solar System, the terrestrial planets are the inner planets closest to the Sun.

WHAT ARE THE CLOSEST PLANETS TO EARTH



At least one planet, possibly two, orbit the star. The one planet, called Proxima b, is similar to Earth in size and lies in the habitable zone of its star. This three-star system can be seen from Earth, but Proxima Centauri is a bit too dim for the naked eye to detect. Both ?? Centauri A and ?? Centauri B can be seen without telescopes.



Well, again, the answer to that is not exactly straightforward, as it tends to change. Sometimes, Mars is the closest planet to Earth. The closest that Mars comes to Earth in its orbit is 33.9 million miles away from it. In order to get an answer that is not subject to change, we must look at what planet is closest to the Earth on average.



In fact, the scientists behind the article crunched the numbers and found that on average, Mercury is the closest planet not only to Earth but to every other planet in the solar system as well

WHAT ARE THE CLOSEST PLANETS TO EARTH



The middle planet, TOI 700 c, is 2.6 times larger than Earth ??? between the sizes of Earth and Neptune ??? orbits every 16 days and is likely a gas-dominated world. TOI 700 d, the outermost known planet in the system and the only one in the habitable zone, measures 20% larger than Earth, orbits every 37 days and receives from its star 86% of

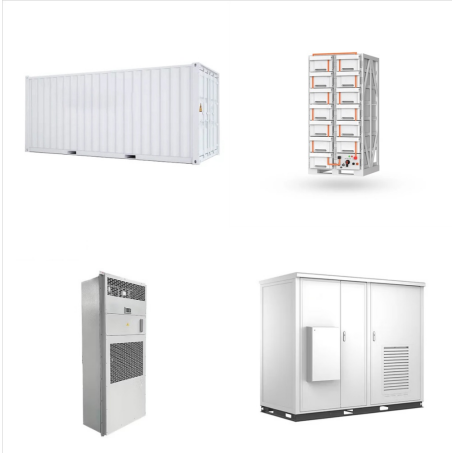


The distance among each of the eight planets in our Solar System will alter depending on where each planet is in its orbit revolution. The Astronomical units (AU) column is the average distance between Earth and the Sun and is the most common way for scientists to measure distance in our Solar System. Below is a table of the distances



It turns out that Venus is, on average, 1.14 astronomical units (AU) from Earth, but Mercury is, on average, only 1.04 AU from Earth. An AU is a unit of length equal to the average distance ???

WHAT ARE THE CLOSEST PLANETS TO EARTH



The closest planet to Earth means the planet that is at the closest distance from the Earth. Many scientists believe that the closest planet to Earth is Venus. Students can learn more about the closest planet to Earth here. Learn. CBSE. Class 5 to 12. Physics. Difference Between in Physics; Maths; Chemistry; Biology.



Earth. The third closest planet to the Sun. Earth is at an average distance of 150 million km / 93 million mi or 1 AU away from the Sun. It only has one moon and several other smaller satellites. Earth is the biggest terrestrial ???

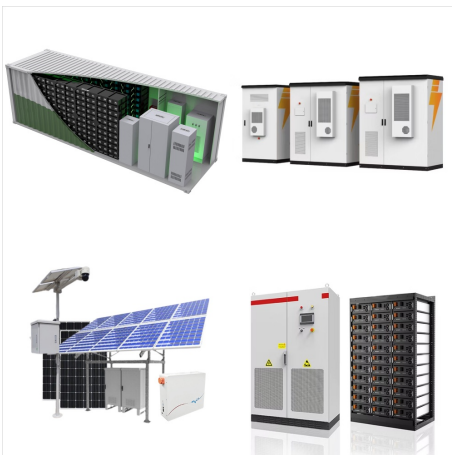


Our solar system is made up of a star???the Sun???eight planets, 146 moons, a bunch of comets, asteroids and space rocks, ice, and several dwarf planets, such as Pluto. The eight planets are Mercury, Venus, Earth, Mars, Jupiter, Saturn, Uranus, and Neptune. Mercury is closest to the Sun. Neptune is the farthest.

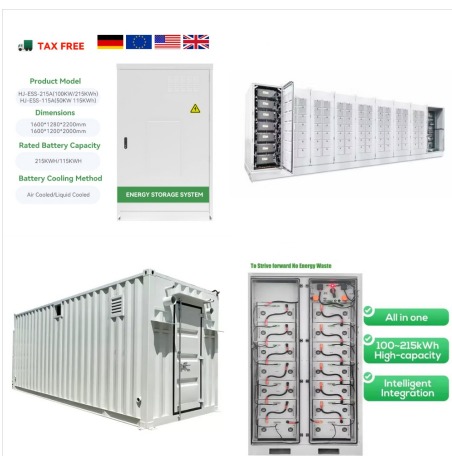
WHAT ARE THE CLOSEST PLANETS TO EARTH



"The majorly interesting thing is that this is a planet that's really nearby; in fact, it's one of the closest transiting planets to Earth," University College of London scientist Larissa

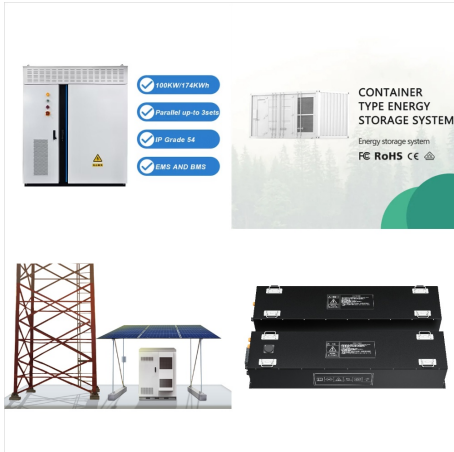


How to Use the Planet Chart. Using the four buttons at the top, select either Distance from the Sun, Distance from the Earth, Size in the Sky, or Brightness to control how the planets are displayed.; Press the Play button at the bottom of the chart to make time move in fast forward mode. You can also move backward and forwards in time by sliding the hand cursor along the ???



Look at the order of the planets. The closest planet to the Earth should be either the previous planet (Venus), or the following (Mars) Look up the mean radii of these planets orbits. To find the average distance between Earth & Mars and Earth & Venus, subtract the smaller radius from the bigger one for each pair. The smaller distance gives us

WHAT ARE THE CLOSEST PLANETS TO EARTH



Outward from the Sun, the planets are Mercury, Venus, Earth, Mars, Jupiter, Saturn, Uranus, and Neptune, followed by the dwarf planet Pluto.

Jupiter's diameter is about 11 times that of the Earth's and the Sun's diameter is about 10 times Jupiter's. Pluto's diameter is slightly less than one-fifth of Earth's.



For example, when this article was written (January 2024), the closest planet to Earth was Mercury. But in around eight months, Venus will be the closest planet to us, and in another two months or so, Mars will have surpassed Venus as our closest neighbor. However, less than a month later Venus will have wrestled back the title.



Because of where the planets are on these orbital paths, and specifically the time it takes Mercury to orbit the sun, Mercury is the planet that is closest to Earth more often and has an average distance to Earth that is lower than the other 2 inner planets. Mars is occasionally the closest as well, but on average much further than Mercury or