

What is a 600 watt solar panel?

What are 600 Watt solar panels? A 600-watt solar panel is a solar photovoltaic(PV) panel designed to generate usable electricity from sunlight. The wattage is used to measure its efficiency in power output capacity. Hence, the higher the wattage, the higher the output.

Are 600 watt solar panels a good investment?

600-watt solar panels are an excellent investment in renewable energy because of their capacity to lessen one's reliance on fossil fuels and decrease monthly power costs. How Many Watts Does a 600-Watt Solar Panel Produce? A 600-watt solar panel is a robust and efficient choice for home solar energy systems.

What is a 600 watt power system?

A 600-watt panel setup or kit can contribute to a self-sustained power system. Small to medium-sized businesses: Small to medium-sized businesses with moderate energy consumption and available space can consider 600-watt panels an effective solution.

How many batteries do I need for 600 watt solar panels?

The number of batteries you will need for 600-watt solar panels depends on how much power you need during hours without sunlight. For example, if you wanted to store enough energy to power a 600-watt load for 24 hours, you would need to calculate the watt-hours requirement. It would look like this: 600 watts x 24 hours = 14,400 watt-hours

Can a 600 watt solar panel be used outdoors?

Renogy has developed a 600-watt solar panel for use in the great outdoors that operates independently of the grid. It's ideal for use in the great outdoors, whether in a yard, barn, RV, boat, or camper, thanks to its high efficiency, enhanced charging efficiency, and Maximum Power Point Tracking technology integration.

How much space does a 600 watt solar panel need?

A 600-watt solar panel typically requires approximately 30-40 square feet of roof space and 60-80 square feet for ground-mounted installations. With roof-mounted solar panels, utilizing roof mounts such as flush mounts or tilt mounts ensures your panels are secure. Meanwhile, ground-mounted systems may involve fixed-tilt

WHAT CAN A 600 WATT SOLAR PANEL POWER



racks or tracking systems.



What is a 500-watt solar panel? A 500-watt solar panel has a wattage rating of 500 watts under Standard Test Conditions (STC). STC is an industry standard that involves testing panel performance in a lab under 1,000 lumens/m² of ???



x 50% = 600 watt-hours. 3. Multiply the solar panel rated watts by the charge controller efficiency. 100 watt solar panel will take about 9 peak sun hours to fully charge a 12v 100ah lead acid battery from It tracks ???



A single 400 watt solar panel is insufficient in powering an entire home, but it can power small systems including a few appliances under the 400 W mark. To power an entire house, however, you will need multiple 400 W solar panels.

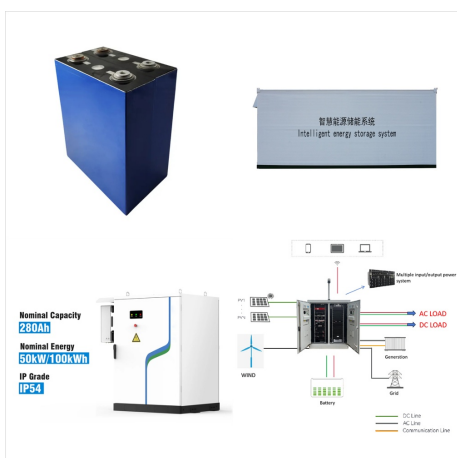
WHAT CAN A 600 WATT SOLAR PANEL POWER



100-watt solar panels at a glance. Prices for 100-watt solar panels range from about \$70 to \$200, with the higher-priced panels coming with long warranties and premium features. A 100-watt solar panel typically produces between 300 and 600 watt-hours (Wh) of solar energy per day.



What Can a 600 Watt Solar Panel Power? After learning about how many Amps is a 600 Watt solar panel it is time to see what can a 600 watt solar panel power. To determine what devices a 600 watt solar power system ???



Whenever you want to find out what the standard solar panel sizes and wattages are, you encounter a big problem: There is no standardized chart that will tell you, for example, "A typical 300-watt solar panel is this long and this wide."

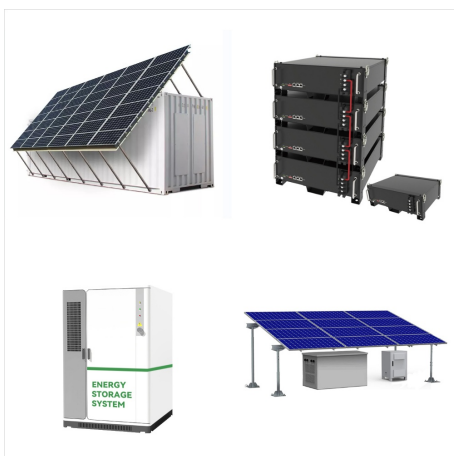
WHAT CAN A 600 WATT SOLAR PANEL POWER



From here, we can determine that two of these 100-watt panels would give us about 65.16 amp-hours a day, which covers our requirement of 50 amp-hours. Our two 100-watt solar panels equal 200 watts together, which also checks out with our guideline of matching our battery amp-hours with our solar panel wattage.



A 600-watt solar panel is a solar photovoltaic (PV) panel designed to generate usable electricity from sunlight. The wattage is used to measure its efficiency in power output capacity. Hence, the higher the wattage, the higher ???



Calculator Assumptions. Battery charge efficiency rate: Lead-acid - 85%, AGM - 85%, Lithium (LiFePO4) - 99% Charge controller efficiency: PWM - 80%; MPPT - 98% [] Solar Panels Efficiency during peak sun hours: 80%, this means that a 100 watt solar panel will produce 80 watts during peak sun hours. [Click here to read more.](#)

WHAT CAN A 600 WATT SOLAR PANEL POWER



???Ready to Install??? This Renogy Solar Kit includes the equipment necessary for building a new system, such as necessary cables, Z-brackets, and pre-drilled holes on the back frame of the panel, allowing fast and secure mounting. With the Rover Li 60A MPPT charge controller, the kit can meet your further power needs by adding more of the same solar panels; for example, a ???



Expert Insights From Our Solar Panel Installers About What a 400-Watt Solar Panel Can Run. 400-watt solar panels are highly versatile, making them perfect for running small electronics, LED lights, and even energy-efficient appliances ???



Can You Power a Home with 100W Solar Panels? 100-watt solar panels are handy for smaller appliances and limited uses. A single 100-watt solar panel is insufficient to power a home unless paired with additional panels. In order to power your home with 100-watt panels in a cost-effective way, you would need around 50-100 of them.

WHAT CAN A 600 WATT SOLAR PANEL POWER



The most well-known type is 400 W solar panels, which produce an energy range of 1.2-3 kWh. The higher the wattage, the better energy production efficiency your solar panels will have! These solar panels can range between 400-600 dollars, depending on size, wattage, and solar panel producers in your country.



A 600-watt solar panel is a robust and efficient choice for home solar energy systems. On a bright day, one 600-watt panel may generate roughly 600 watts or 600-watt-hours per hour. Furthermore, most solar panels have a ???



Advantages of 600 Watt Solar Panels. High Power Output: 600 watt solar panels offer a considerable power output, ensuring efficient energy generation. Space Efficiency: Despite their high capacity, these panels are relatively space-efficient, making them suitable for installations where space is limited.

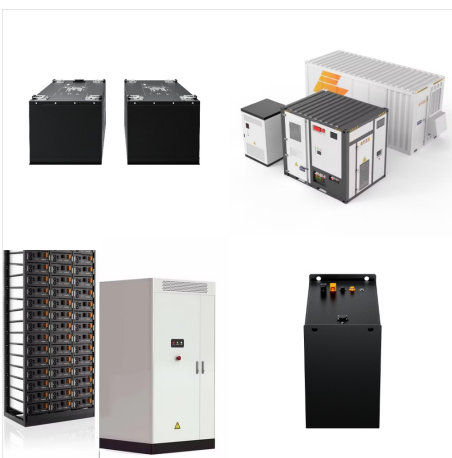
WHAT CAN A 600 WATT SOLAR PANEL POWER



Solar power is a great way to reduce your carbon footprint and reliance on the grid, but how much power does a 600 watt solar panel actually produce? In this. A 600 watt solar panel can output 600 watts of power under ideal conditions, but in real-world conditions, it may only be able to output 300-400 watts.



What Can a 600 Watt Solar Panel Power? The capabilities of a 600W solar system depend on various factors like the charge controller's size, environment, location, and panel efficiency. In ideal conditions with 5 hours of peak sunlight, a 21% efficiency rating, and an MPPT (Maximum Power Point Tracking) charge controller, a 600W solar system

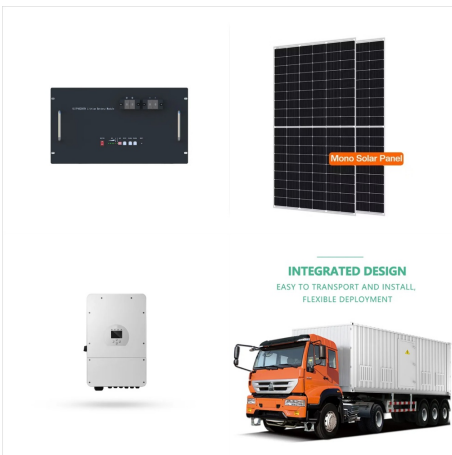


$\times 50\% = 600$ watt-hours. 3. Multiply the solar panel rated watts by the charge controller efficiency. 100 watt solar panel will take about 9 peak sun hours to fully charge a 12v 100ah lead acid battery from It tracks the maximum power point of the solar panel and regulates the voltage and current to ensure the maximum amount of

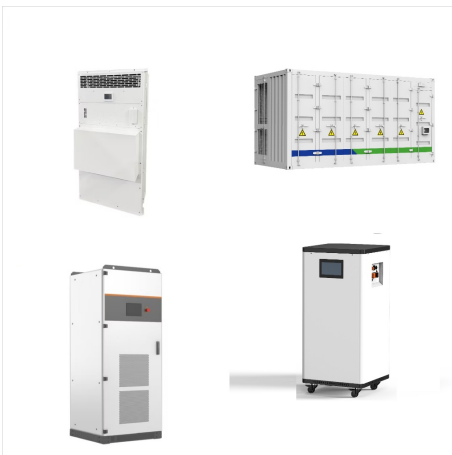
WHAT CAN A 600 WATT SOLAR PANEL POWER



A single 200W solar kit won't cut it unless you expand dramatically. How Much Can a 600W Solar Panel Power? A 600W solar panel kit really opens up the door to easier living. With a 600W solar panel kit, you can power many devices and appliances, even at the same time.



Solar Panels Compatible With Goal Zero Yeti 1500X, 3000X & 6000X. The three Goal Zero largest power stations, also known as solar generators, are currently the Yeti 1500X, No products found., and Yeti 6000X.. A lot of people buy these massive power stations to have as backup power in case of an emergency, but they're also used by campers that go ???

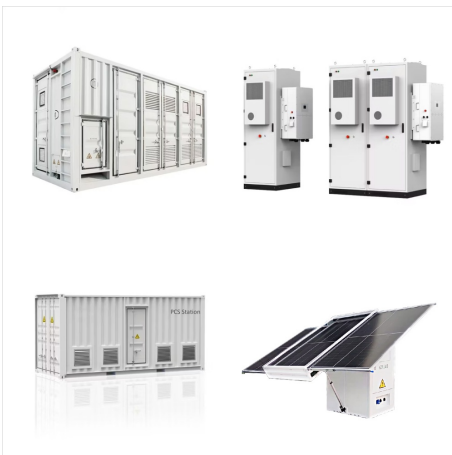


6. take into account solar panel output efficiency. Solar panels are designed to produce their mentioned wattage rating under standard test conditions - STC. Which includes: 1kW/m² solar radiation (also known as peak sun hour), 25 °C temperature, and 1.5 air mass (AM).. But in real world conditions, you will rarely experience 100% output from your solar ???

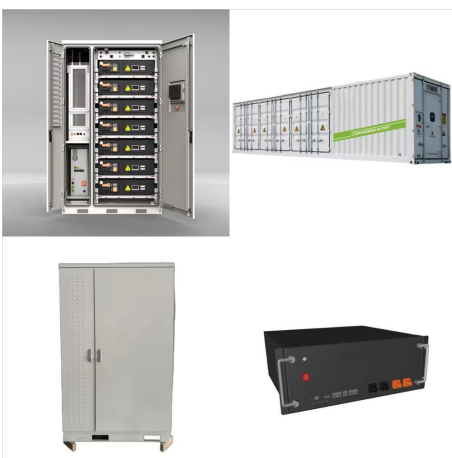
WHAT CAN A 600 WATT SOLAR PANEL POWER



Read on to find out. A 100-watt solar panel can generate enough electricity to power 10 60-watt light bulbs for 6 hours per day. you would need between 24-28 600 watt solar panels or 2.4 to 2.8 kilowatts (kw) of solar panels on your roof. What Can a 500 Watt Solar Panel Run? A 500 watt solar panel can power a laptop for about 5-6 hours, a



In theory a 600 watt solar power array can produce 3000 watts. Note that we are talking about a solar array, not solar panel. No single solar panel can produce 600 watts. There is no 600 watt solar panel available. You have to combine smaller PV modules to get to 600 watts. There are solar panel kits that consist of 2 x 300W solar panels



600 Watt Solar Kit - Standard Kit is backordered and will ship as soon as it is back in stock. Qty--
Add to cart. 200 Watt Solar Panel Specifications
Maximum Power(Pmax): 200W Maximum Power
Voltage(Vmp): 20.4V Maximum Power
Current(Imp): 9.80A ???

WHAT CAN A 600 WATT SOLAR PANEL POWER



3. Enter the panel's max power current in amps (denoted I_{mp} or I_{mpp}). It may also be called the optimum operating current. 4. In the Quantity field, enter the number of this type of solar panel you'll be wiring together. 5. If you're using different solar panels, click "Add a Panel" and fill out the next panel's specs and quantity.



The first factor in calculating solar panel output is the power rating. There are mainly 3 different classes of solar panels: Small solar panels: 50W and 100W panels. In short, a 100-watt solar panel can output 0.45 kWh per day if we install it in a very sunny area. Let's confirm that with the Solar Output Calculator:



This wattage refers to the overall power output that a PV panel can provide in a specific amount of time. It is determined by factors such as voltage, amperage, and number of cells. Typically, lower-wattage panels are more ???

WHAT CAN A 600 WATT SOLAR PANEL POWER



Designed for RVs, cabins, homes, boats, back-up and remote power use; Solar panels can be wired in parallel for 12-Volt battery charging or in series for 24-Volt battery charging; Negative grounding design; Complete kit includes: 6 x 100-Watt 12-Volt solar panel with mounting brackets, 30 Amp MPPT charge controller, 30 ft. 10 AWG solar adaptor



A solar panel is an efficient tool for running multiple home appliances but have you ever wondered what can 400-watt solar panel can run? Well, A 400-Watt solar panel can run your favorite appliances without costing much. Modern electronic gadgets, including computers, game consoles, televisions, laptops, fans, printers, and more, maybe readily powered by a single ???



While it takes roughly 17 (400-watt) panels to power a home. Depending on solar exposure and energy demand, the number of panels can also range from 13 to 19. It's often seen that larger homes might require more solar power. For example, a 1,500-square-foot house can need around 630 kWh each month while a 3,000-square-foot house can use 1,200

WHAT CAN A 600 WATT SOLAR PANEL POWER



Expert Insights From Our Solar Panel Installers About What a 400-Watt Solar Panel Can Run. 400-watt solar panels are highly versatile, making them perfect for running small electronics, LED lights, and even energy-efficient appliances in RVs and cabins. They're a great choice for those looking to go off-grid or reduce their reliance on the grid.



As we can see, a 400-watt solar panel will need 2.7 peak sun hours to charge a 100Ah 12V lithium battery. If we presume that we get 5 peak sun hours per day, we can actually fully charge almost two 100Ah batteries (or one 200Ah battery). 600 Watt Solar Panel: 2 Peak Sun Hours (9.6 Normal Hours): 540 Watt Solar Panel: 480 Watt Solar Panel