



What can a 100 watt solar panel run?

A 100 watt solar panel can run small appliances such as phones, fans, tablets, etc., when you're outdoors or there's a power outage in your area. It is small and compact in size, ensuring essential gadgets remain powered on the go.

How do I use 100 watt solar panels?

The way you utilize your 100-watt solar panels will depend on what you plan to power. While a single 100-watt panel may easily power small appliances and devices with low wattage, larger appliances and homes can require greater power. You may need to utilize several panels at once or select panels with higher wattage.

What are the best 100 watt solar panels?

The best solar 100-watt panels to buy: Eco-Worthy 100 W Complete Off Grid Solar Kit (best for beginners); SunPower E-Flex (best for RVs, boats, etc); Renogy 100 W Foldable Solar Suitcase (best portable); Goal Zero Boulder 100 (most durable). A 100-watt (W) solar panel is a photovoltaic (PV) module that has a power rating, or wattage, of 100 W.

How many volts does a 100 watt solar panel produce?

Typically, a 100-watt solar power panel produces nearly 18 volts of a maximum volt. You'll have to connect more than 20 residential solar power panels to power your home. Likewise, you'll have to connect three or four 100W panels for RVs. How Many Amps Does a 100-Watt Solar Panels Produce?

Should you buy a 100 watt solar panel?

The 100-watt panel can also be a convenient option for customers looking to increase their solar energy on a smaller, or more gradual, scale; those who travel in a van or RV and need power on the go; those who are only powering small devices with solar energy, and so on, and don't need a bulky solar setup.

Can a 100 watt solar panel power a Wi-Fi router?

Wi-Fi routers: Wi-Fi routers typically consume around 5-10 watts of power, so a 100-watt solar panel can power a Wi-Fi router for several days. In addition to these devices, a 100-watt solar panel can also be used to

WHAT CAN YOU POWER WITH A 100 WATT SOLAR PANEL



power a variety of other small appliances and gadgets, such as radios, flashlights, and power tools.



To get an accurate calculation of what you can and cannot power with a single 100 watt solar panel, you'll need to compare the output per day or month (so 1 kWh/day for the solar panel) with the needs of an appliance (3.8kWh/day for a refrigerator). In this example, a 100 watt solar panel would not be enough to power that refrigerator.

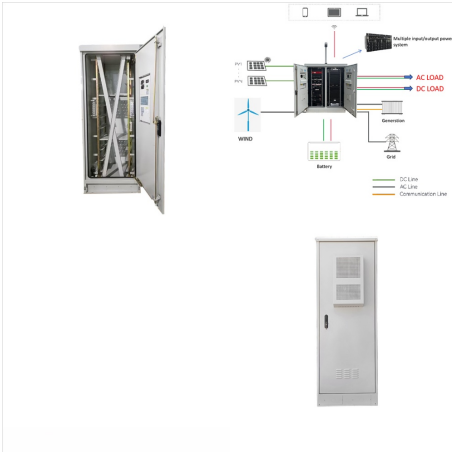


What Can You Power with a 100 Watt Solar Panel?
A 100 watt solar panel is perfect for powering small devices and appliances, making it an excellent choice for off-grid living, camping trips, or reducing your reliance on the grid. Here ???



If you want to connect solar panels to expand your setup, you would need a lot of additional equipment ??? solar power mounting brackets, solar panel cables, and fuse holders are just a few. You would also need to be clued up on what gauge wire for 100-watt solar panels are the most suitable before you can wire your setup.

WHAT CAN YOU POWER WITH A 100 WATT SOLAR PANEL



A 100-watt solar panel can power small to medium electronic devices. It produces around 400 watt-hours of energy on a sunny day. It can effectively charge a 12V battery. Suitable for low wattage appliances like LED lights and smartphones. Solar panel performance varies based ???



A single 400-watt solar panel can power most devices and small appliances, including: Smartphones; Laptops; Lights; Televisions; Fans; For example, the average smartphone has a battery capacity of around 15 Wh. Since a 400-watt panel can produce 1.6 kWh per day, one panel could charge over 100 smartphones daily!

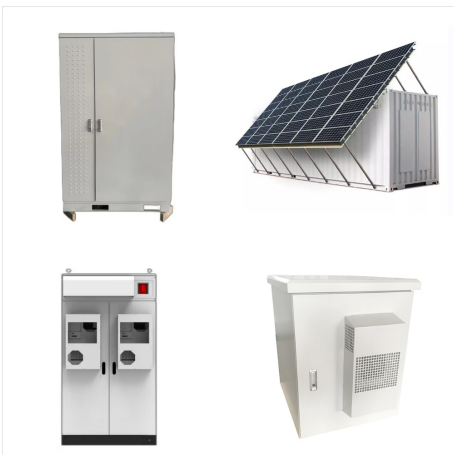


100-watt solar panels are affordable, easy to set up and able to produce electricity anywhere the sun shines. Does this mean they're always the best choice when designing your solar energy project? Not necessarily. In fact, there are plenty of cases where higher-wattage solar panels may be more suitable.

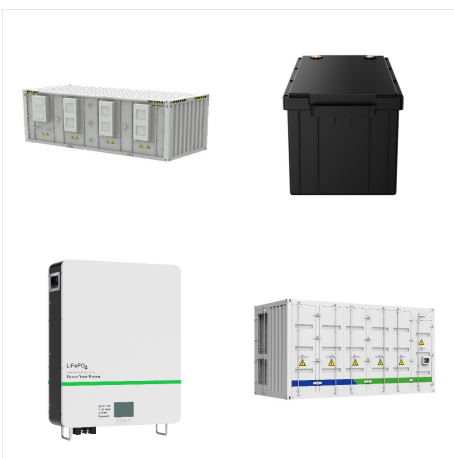
WHAT CAN YOU POWER WITH A 100 WATT SOLAR PANEL



A 100W panel isn't 100% efficient, so you can't expect it to produce 8.3 amps ($100/12$). They usually produce 60-80W in good sunshine. Over a day, a 100W panel usually produces around 30 amp-hours. Frequently Asked Questions What Can You Power With A 100 Watt Solar Panel?

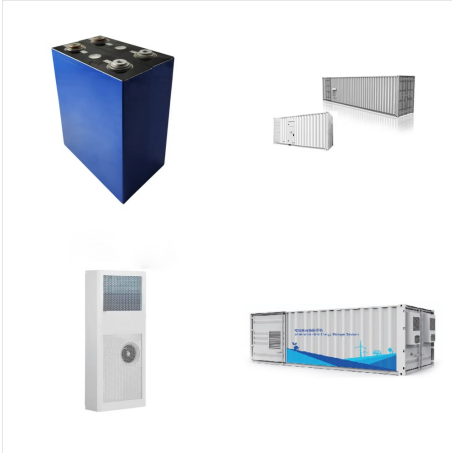


The extension cable will be connecting 1 solar panel, the Renogy 100 Watt 12 Volt Monocrystalline Solar Panel, which is 12 awg to the SolarEnz MC4 to 8mm Adapter Cable, also 12 awg. Which in turn plugs into my Jackery 1000. thank you so much Liz.
Reply



hi, I am looking at the Powkey 100w portable power station 27000mAh. the info says it is rechargeable from a solar panel and states "Portable power station can be compatible with 12-24V, 40W-60W solar panels, 40W is the best (solar panels not included), compatible cable port is 5.5x2.1mm, use with solar panels to save energy". please could

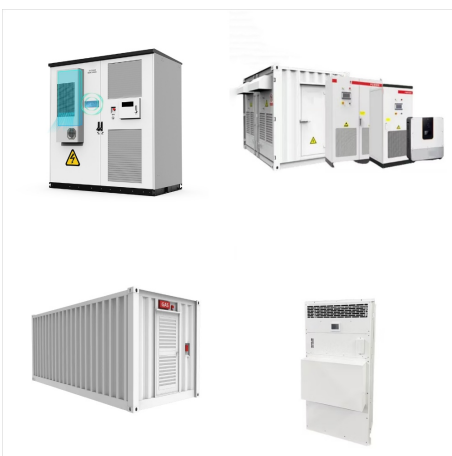
WHAT CAN YOU POWER WITH A 100 WATT SOLAR PANEL



While it takes roughly 17 (400-watt) panels to power a home. Depending on solar exposure and energy demand, the number of panels can also range from 13 to 19. It's often seen that larger homes might require more solar power. For example, a 1,500-square-foot house can need around 630 kWh each month while a 3,000-square-foot house can use 1,200



For a 100 watt solar panel, I recommend you get a 200W solar inverter. You won't need more than that for all your small devices, and it ensures you have some extra power to spare. Can You Connect Multiple 100 Watt Solar Panels Together? You can connect multiple 100 watt solar panels together to increase the amount of energy they can produce.



Given that the appliances are not running all the time and that you manage your power consumption correctly, a 200 watt solar panel can provide enough energy to run a laptop, LED lights, an energy-efficient mini-fridge, an exhaust fan, a coffee maker, and a 32" LED TV.

WHAT CAN YOU POWER WITH A 100 WATT SOLAR PANEL



100-watt solar panels are great pieces of equipment for RVs, camping, and powering smaller appliances. 100-watt solar panels are smaller than the solar panels used in residences and homes. They are typically between 47 x 21.3 x 1.4 inches in size.



Specific Appliance Run Time With a 100W Solar Panel. A 100-watt solar panel typically produces about 5 to 9 amps per sunny day, which translates to 30-48 amp-hours (Ah). To determine how long a 100W panel can power a specific appliance, consider the device's wattage and the number of hours of sunlight available for solar charging.

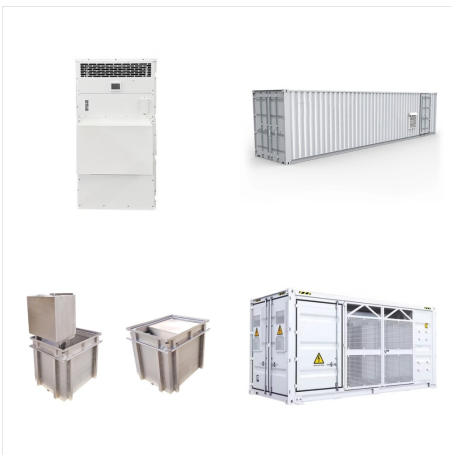


The beginning stages of research with solar power is always, "how much power with how many panels". And it is really great that you're thinking of using solar. It's definitely a smart way to go. The answer to this question ??? what can you run with a 100 Watt solar panel ??? can be a bit tricky.

WHAT CAN YOU POWER WITH A 100 WATT SOLAR PANEL



But make sure the inverter has enough capacity for what you need. The number of solar panels you can connect to inverter depends on its capacity. If the inverter is 200W, you can only use 2 x 100W solar panels maximum. If you want the inverter to have reserve power ??? and you should ??? you can only use one 100W solar panel.



What a 100 Watt Solar Panel Can Run. Now that we understand the power consumption of common appliances and how to estimate solar panel output, let's explore what a 100-watt solar panel can power: LED Lights: A 100-watt solar panel can power several LED lightbulbs, illuminating indoor or outdoor spaces during the evening or night.



The first factor in calculating solar panel output is the power rating. There are mainly 3 different classes of solar panels: Small solar panels: 50W and 100W panels. In short, a 100-watt solar panel can output 0.45 kWh per day if we install it in a very sunny area. Let's confirm that with the Solar Output Calculator:

WHAT CAN YOU POWER WITH A 100 WATT SOLAR PANEL



What Can a 100 Watt Solar Panel Power? A single 100-watt solar panel can power up many small devices, including cell phones, lamps, ceiling fans and other small devices. The appliance/devices you can charge with 100-watt solar panels depend on multiple factors, including: Battery size; Environmental factors such as weather conditions



Key insights. 100-watt solar panels aren't ideal for running your home on solar power. However, you can use one or more 100-watt solar panel(s) to power phones, appliances and other small-scale



When evaluating your solar panel options, one of the top metrics is a panel's power rating, often called wattage. The number of watts in a solar panel indicates its overall capacity to produce power, and 100-watt solar panels are on the lower end of the spectrum. Higher-wattage panels, like those over 300 watts, can produce more electricity. There are hundreds of solar ???

WHAT CAN YOU POWER WITH A 100 WATT SOLAR PANEL



Having 68 solar panels also means 68 different modules that need to be wired, mounted and exposed to full daily sunlight. Because of this, over the years, 100-watt solar panel options have become more and more specialized for do-it-yourself and small-scale use.



Hello I am new to the jackery family and just purchased a small jackery from hf and it's a 400 watt device. I have the harbor freight panels 100 watt panels as well bought the original one with the 4 25 watt panels, early in the game just to experiment with and learn from. And later purchased the single 100 watt panel to save space for

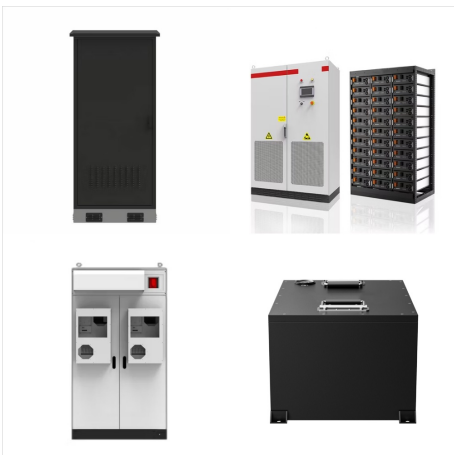


To determine the number of batteries a 100-watt solar panel can charge, you must consider the solar charge controller capacity and the solar panel's charging rate. For example, a 100-watt solar panel with a charging rate of 5 amps can charge a 20 amp-hour battery in approximately 4 hours.

WHAT CAN YOU POWER WITH A 100 WATT SOLAR PANEL



A 100-watt solar panel can generate about 100 watts of power under ideal conditions. This is sufficient for charging small devices and appliances but may not be enough for more power-hungry equipment. You can connect several 100-watt panels together in a system to boost the total power output. Pros and Cons of 100-Watt Solar Panels



How Much Power Will a 100 Watt Panel Provide?
When you know how much power your solar panel will provide, you can determine how long it will take to charge your devices and batteries. This won't be an exact number, however, and will be affected by:
Intensity of sunlight. Charge ???



The best solar 100-watt panels to buy: Eco-Worthy 100 W Complete Off Grid Solar Kit (best for beginners); SunPower E-Flex (best for RVs, boats, etc); Renogy 100 W Foldable Solar Suitcase (best portable); Goal Zero Boulder 100 (most durable).

WHAT CAN YOU POWER WITH A 100 WATT SOLAR PANEL



Solar panels producing 100 watts of energy can power up most small electrical devices, including smartphones, laptops, etc. They are relatively compact so you can place the solar panel under a small roof section, over a window, or balcony. Hence, it is suitable for small-sized homes.



Second, we need to determine the electrical power output of 100-watt solar panels in watt-hours (Wh). Example: On average, a 100W solar panel produces 0.375 kWh of electricity per day. That is equal to 375 Wh per day and, on average, 31.25 Wh per hour.



How Much Power Does A 100-Watt Solar Panel Produce? In an ideal situation, a 100-watt solar panel can produce 100 watts. The good news here is that, unlike your stationary roof panels, you have the ability to maximize how much power your ???

WHAT CAN YOU POWER WITH A 100 WATT SOLAR PANEL



Now we just divide the amp hours in the battery by the amps our solar panel produces: 20 amp hours = 3.6 hours 5.5 amps. So, without taking into account all of the factors we mentioned above, it will take a little over three and a half hours to fully ???



A solar panel is an efficient tool for running multiple home appliances but have you ever wondered what can 400-watt solar panel can run? Well, A 400-Watt solar panel can run your favorite appliances without costing much. Modern electronic gadgets, including computers, game consoles, televisions, laptops, fans, printers, and more, maybe readily powered by a single ???



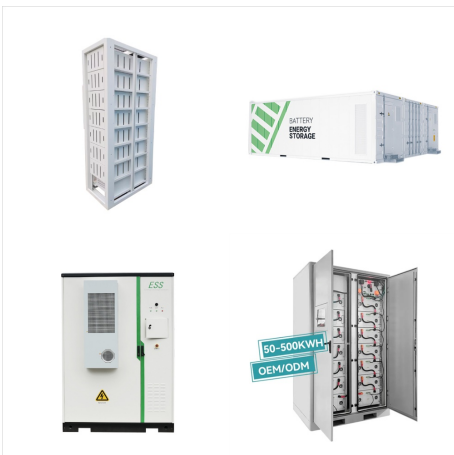
Different Types Of Charge Controllers. There are two different types of charge controllers that you can get. The one that you end up choosing will depend on your 100-watt solar panel specifications, as well as the makeup of your solar system and the needs that it has.. The two different types are a Pulse Width Modulation (PWM) charge controller and a Maximum ???

WHAT CAN YOU POWER WITH A 100 WATT SOLAR PANEL



What Can You Power with 100-Watt Solar? A 100-watt solar panel can power a variety of small electronics and devices, depending on their power consumption. Here are some examples of devices that can be powered by a 100-watt solar panel:

Small laptops: Most ???



Here's how this works ??? A 100-watt solar panel will generate: 100 Wh in 1 peak sun hour. 200 Wh in 2 peak sun hours. 300 Wh in 3 peak sun hours. 400 Wh in 4 peak sun hours. 500 Wh in 5 peak sun hours. Alright, we can see that a 100-watt solar panel can (on average, given 5 peak sun hours per day) produce 500 Wh of electricity.



This is the panel's listed wattage and can be found on the back of the panel. At this point in the day, the clouds had rolled in, so my watt meter measured an output of 24.4 watts from my 100 watt solar panel. As you can in the photo, you can also use a power meter to measure solar panel amps (1.86A) and voltage (13.14V).