

How does Snapchat determine your best friends?

Your best friend on Snapchat is your friend, who most communicates with you. When you send photos, receive photos, and interact with one person regularly, you become best friends. The Snapchat algorithm puts all your friends in an order based on their interaction with you, and your contacts will be listed in the application as your best friends.

How to see someone's best friends on Snapchat?

Purchase the NEXSPY app from the official website. Now you have to install the app on the phone of the specific Snapchat user. ... Now you will be able to monitor the Snapchat account from the dashboard. You can now view the best friends of the specific Snapchat account as well.

Can You Be Your Own best friend on Snapchat?

You cant exactly just click a button & automatically make someone your best friend, although you can pick who you want to be your best friend & snapchat that person a lot & soon they will appear as your best friend. Why have I only 6 best friends on Snapchat?



What does "mutual friends" mean on Snapchat?
Mutual friends are the users that two people have in common. For example, if you're John and you are friends with Mike, and Mike is friends with Chris, then Mike will count as a mutual friend when you see Chris' profile. Is Quick Add on Snapchat mutual friends?

WHAT DOES BESTFRIENDS MEAN ON SNAPCHAT



While the algorithm determines the initial order of your Best Friends, you have the ability to customize it to better reflect your closest friends. To change the order of your Best Friends list, simply tap and hold on a friend's name in the list and drag it to the desired position.

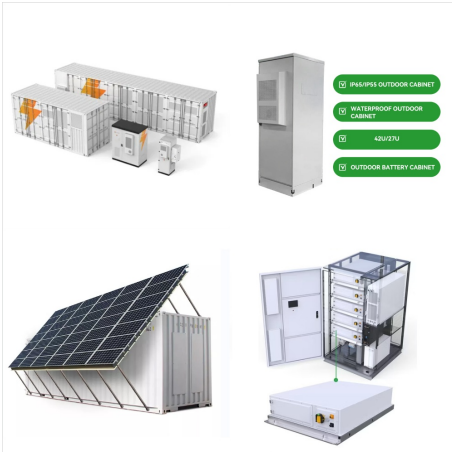


On Snapchat, your Best Friends are the people you Snap and Chat with most often. Users cannot see each others' Best Friends lists. What does the 100 emoji mean on Snapchat? On the 100th day of maintaining a Snapstreak, the ???



Pink hearts ???? ??? means you have been best friends with a user for two consecutive months (aka Super best friends!). You've been sending the most snaps to each other for 60 consecutive days. Red heart ?,? ??? you will see this ???

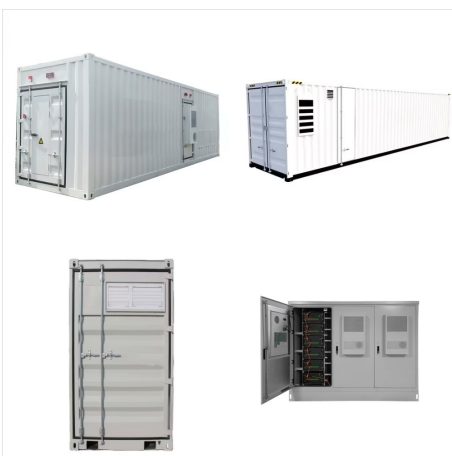
WHAT DOES BESTFRIENDS MEAN ON SNAPCHAT



Managing Your Snapchat Best Friends List Adding Friends to Your Best Friends List. When it comes to managing your Snapchat Best Friends List, adding friends is a great way to stay connected with those you interact with the most. Adding someone to your Best Friends List on Snapchat is simple and can be done in just a few easy steps.



This means that you and your top friend share a mutual best friend. The yellow heart / red heart indicates that you are best friends with this person. In other words, you both send each other the most snaps. However, the sunglasses emoji indicates that someone on your Best Friends list is also on their Best Friends list.

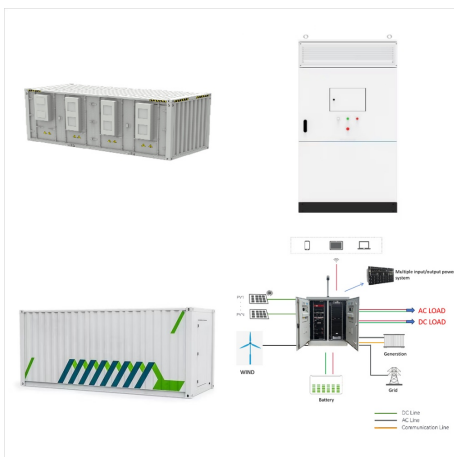


What The Default Friend Emoji Mean Snapchat considers a "Best Friend" to be someone to whom you send the most amount of snaps. You can have up to eight Best Friends in your contact list. Friend emoji denote the status of your relationship with a friend (which to Snapchat, means variations on the amount of snaps you send to one another).

WHAT DOES BESTFRIENDS MEAN ON SNAPCHAT



They're one of your Best Friends! You send a lot of Snaps to this Snapchatter, but they're not your #1 Best Friend. ???? Mutual Besties Your #1 Best Friend is also their #1 Best Friend. ???? Mutual BF's One of your Best Friends is also one of this Snapchatter's Best Friends! ???? Snapstreak! You're on a Snapstreak! This appears next to the



A yellow heart Snapchat emoji means you're best friends with a user, and they're best friends with you. You send the most Snaps to this person, and they send the most snaps to you. The yellow heart will turn red if you remain each other's BFF for two weeks.



Yellow heart - appears next to your #1 best friend on Snapchat (and vice versa). This happens when you exchange a significant number of snaps with a user regularly. Pink hearts ??? means you have been best friends with a ???

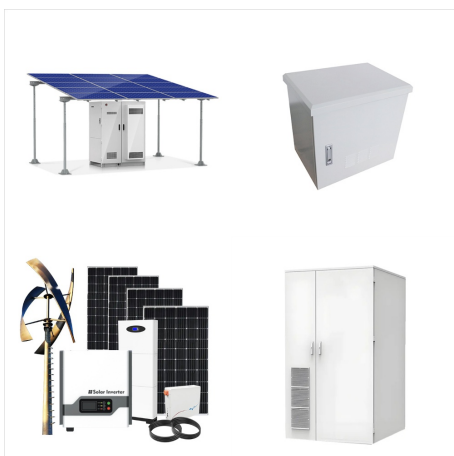
WHAT DOES BESTFRIENDS MEAN ON SNAPCHAT



These features enhance and customize your Snapchat experience, enabling you to dive deeper into the parts of the app you use the most ????. Plus, you can peep cool new features before anyone else! Please Note: Subscription pricing may vary in different countries and devices. The price shown on your device is the price you'll be charged if you



When someone is a Best Friend on Snapchat, their name will show up first on the list on both the Chat and Send To screens. Snapchat regularly updates a user's Best Friends, depending on who they interact with the most. Other Snapchat users can see if they're among a user's Best Friends, but the Best Friends list remains private to the user.

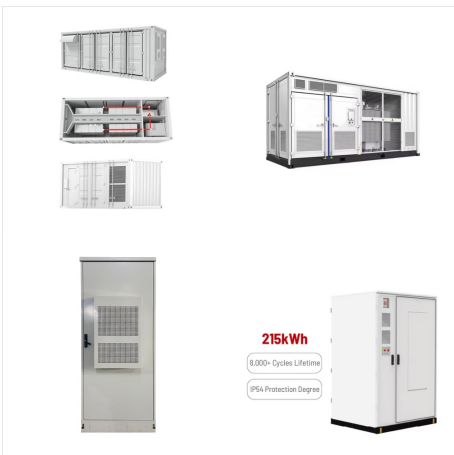


The smile emoji, which is used universally to indicate happiness (or simply smiling), appears next to the person's username. The smile emoji indicates that the person is one of your best friends. This means that they are one of the people that you send snaps to the most. You can have up to eight best friends on Snapchat.

WHAT DOES BESTFRIENDS MEAN ON SNAPCHAT



Two pink hearts mean that you have been best friends with this person for two months consecutively, representing a strong, long-term Snapchat relationship. Gold Star Emoji on Snapchat ? A gold star appears next to a friend's name when someone has replayed their snap within the past 24 hours, highlighting a popular snap.



What does "mutual friends" mean on Snapchat? Mutual friends are the users that two people have in common. For example, if you're John and you are friends with Mike, and Mike is friends with Chris, then Mike will count ???



Snapchat's Friend Emojis are based on the way you and your friends use Snapchat. If your Friend Emojis changed recently, including BFF and Super BFF, Snapchat won't be able to add, restore or

WHAT DOES BESTFRIENDS MEAN ON SNAPCHAT



The Best Friends list on Snapchat is influenced by the frequency and recency of interactions between users. This includes the number of snaps sent and received, chat conversations, and how often you both start the interaction. The list updates dynamically based on these engagement metrics, reflecting your current messaging habits.



One of your best friends is one of their best friends. ???? Grimacing Face: Your #1 Best Friend is their #1 Best Friend. ???? Smirking Face: You are one of their best friends, but they are not a best friend of yours. ???? Smiling Face: Another one of your best friends. Sparkles: You're in a Snapchat group with this friend.



Older versions of Snapchat included the best friends feature, which listed 3-7 of the friends you snapped with the most at the top of your friend list. In fact, you could tap on anyone's username to reveal who their best friends were. Due to privacy concerns from Snapchat users, the best friends feature was taken away via an update in 2015.

WHAT DOES BESTFRIENDS MEAN ON SNAPCHAT



Shown when you are top best friends with another user. Red heart: ❤️: Shown when you have been best friends with a user for 2 weeks in a row. Pink hearts: 💕💕💕💕: Shown when you have been best friends with a user for 2 months in a row. Birthday cake: 🍰: Shown next to a friend's name on their birthday. Smiling face: 😊



Two pink hearts emoji means you have been best friends for 2 months : 💕💕: Smiling face emoji means he/she is one of your BFs or best friends: 😊: Grimace face emoji means your number 1 BF is also their number 1 BF: 🤢: Smirking face emoji means you are their best friend but they aren't yours: 😏