

What equipment do I need for a solar panel system?

While you may also need other components, like mounting brackets and additional wiring (see solar panel connector types guide), gaining an understanding of the four main pieces of equipment is a great place to start. Solar panels are the most iconic piece of solar equipment and they are the foundation of any solar panel system.

What components are required for a solar panel system?

There are a few key components required for a solar panel system: The most important piece of your solar panel system will be the solar array itself. You want your solar panels placed in a sunny spot on your property.

What are the different types of solar equipment?

All types of solar equipment, from solar panels to inverters to batteries, have a long list of technical specifications that help you understand the equipment's performance, quality, and durability.

Do you need a battery for a solar panel system?

Batteries are becoming increasingly popular to install with solar panel systems. Many property owners use batteries in grid-tied systems to provide backup power or mitigate time-of-use (TOU) charges. Others elect to use batteries to go off-grid. Where a solar battery lies within your solar panel setup will depend on the type of battery.

Which solar panel technology should I Choose?

The solar panel technology you choose should depend on the type of installation and your preference. For example, if you're installing a ground-mounted system, you probably have a good amount of land available. This means you have the space to install more standard efficiency panels and spend less upfront.

What documentation do I need to add a solar system?

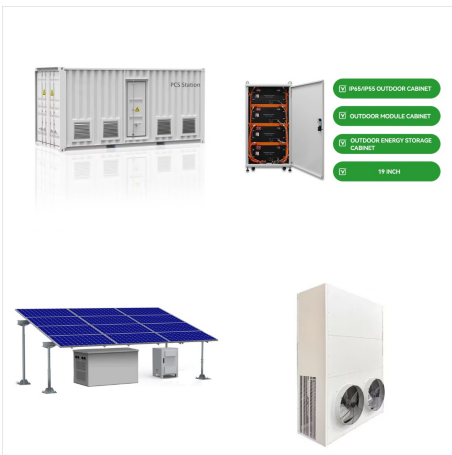
Once they've confirmed you can add a solar system, you'll need to Submit all necessary documentation for permit applications, which may include Site plans showing the location of the solar panels. System design and specifications. Structural details and engineering reports (if required). Electrical diagrams and plans.



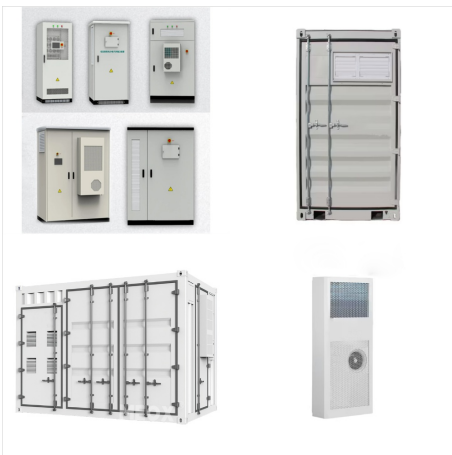
# WHAT EQUIPMENT IS REQUIRED FOR SOLAR POWER



Discover the necessary equipment required for a solar panel system. To harness the power of solar energy, you need solar panels, inverters, racking equipment. Home; Products. Server Rack Battery. 19" Rack-mounted Battery Module 48V 50Ah 3U (LCD) 48V 50Ah 2U PRO



Solar equipment???whether panels, inverters, or batteries???rated as Poor or Fair are at the low end of what is currently available in the market, or outdated models are no longer produced by manufacturers and rarely stocked by solar installation companies. Equipment receiving Good, Very Good, or Excellent ratings must meet a baseline set of



Solar panel setups should also have a disconnect switch that will turn off the solar panel system. Many solar panel systems have two disconnect switches: a DC disconnect (disconnecting the DC current between the solar panels and the inverter) and an AC disconnect (disconnecting your inverter from the grid with grid-tied systems).



# WHAT EQUIPMENT IS REQUIRED FOR SOLAR POWER



Solar panel systems include a few key components: a solar array, racking and mounting equipment, inverters, a disconnect switch, and, optionally, a solar battery. While you may be tempted to DIY your solar system, it's ???



Solar Panels Network USA stands at the forefront of solar energy solutions, driven by a team of seasoned solar engineers and energy consultants. With over decades of experience in delivering high-quality solar installations and maintenance, we are committed to promoting sustainable energy through customer-centric, tailored solutions.



5 Essential Pieces of Solar Panel Cleaning Equipment. To clean the panels properly, there are a few solar panel cleaning tools required. It's possible you already have some lying around your home or office; others are slightly more specialized and many need to source them.



# WHAT EQUIPMENT IS REQUIRED FOR SOLAR POWER



Of course, the easiest way to know how many solar panels you need is to team up with an Energy Advisor to design a custom system. Frequently asked questions How many solar panels does it take to power a house? Based on average electricity consumption and peak sun hours, it takes around 17 400-Watt solar panels to power a home.



After the inverter has converted your solar panels' DC electricity into AC electricity, the AC cable will take it to your PV distribution board ??? that is, a fuse box for your solar panels. And in the vast majority of cases, this distribution board is connected to the supply meter - it won't need connecting to your existing consumer unit.



Among the solar equipment, we also find several of the key components, such as solar panels, inverters, and racking systems. Solar Panels. Solar panels are the components that harness and store the energy produced by the sun. Photovoltaic solar panels (PV), are composed of silicon semiconductors, which capture energy from the sun's rays.



# WHAT EQUIPMENT IS REQUIRED FOR SOLAR POWER



Understanding the components of a solar power system is the first step. The components of a home solar power or PV system are: Solar panels: The solar panels themselves are the key elements of a solar power system. The essential attributes to consider are the efficiency, cost, warranty, and technology type.



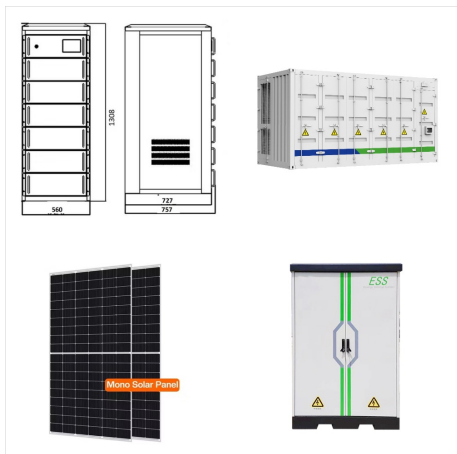
Grounding equipment: Ensuring the safety of the system by dissipating excess electrical current into the ground. What are the key components required to set up a solar power plant? To set up a solar power plant, one needs solar panels, inverters, mounting structures, solar tracker systems, electrical accessories, and a monitoring and



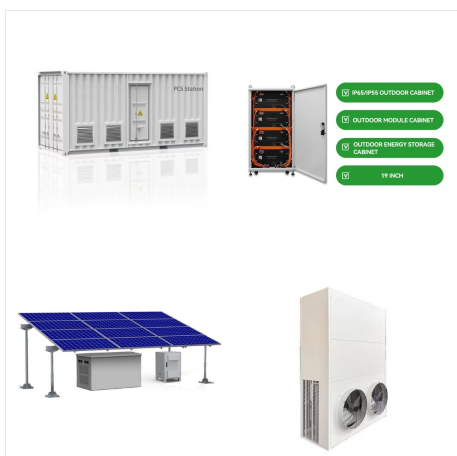
Ready? Let's go! Step 1: Are you prepared for a DIY solar installation project? Evaluate your DIY skills and determine the level of assistance required. Assess your comfort level with installing racking systems, wiring, and ???



# WHAT EQUIPMENT IS REQUIRED FOR SOLAR POWER



Essential equipment for solar panel installation. Some repairs or reinforcements may be needed before the solar panels are attached. After that, set up scaffolding to ensure safety during the solar panel installation process. Then, the solar panel mounting system is set up to support the base of the solar panels.



Pole-Mount Solar Power - Solar panels are attached to a metal frame, and that frame is then attached to the top of a pole mount, elevating the panels higher off the ground and allowing for additional customization. With pole-mounted solar, you can add a tracking system (either single-axis or dual-axis) that rotates throughout the day to



The article provides a guide for setting up a residential solar panel system, outlining the main components needed: solar panels, a charge controller, a battery bank, and a power inverter. Solar panels absorb sunlight and convert ???



# WHAT EQUIPMENT IS REQUIRED FOR SOLAR POWER



Water-fed poles are a good option for cleaning solar panels that are located high up. The pole allows you to reach the panels without having to climb up on a ladder. Solar panel cleaning kits. Solar panel cleaning kits typically include all of the tools and equipment you need to clean your solar panels. Solar Panel Cleaning Tools and Equipment



Power Inverter. A power inverter is solar energy equipment needed unless on battery power exclusively. There are two uses for a power inverter, one is to convert low voltage DC to the 120 volts AC needed for appliances, the other is to charge batteries if connected to ???



Your solar equipment, including the solar charge controller and panels, should be capable of providing the required amp hours to adequately power your motorhome. We're a fan of just converting everything over to watt hours as there is a push to go from smaller voltage (12-volt panels) solar panels to larger voltage ones (24 or 48-volts).



# WHAT EQUIPMENT IS REQUIRED FOR SOLAR POWER



Fig ??? 100A, 12-48V, Max 170A, 150V, MPPT Charge Controller (3) Battery. Batteries are used for backup charge storage. there are different types of batteries used in solar power system for storage and backup operation at overnight when the direct power from solar panels are not available. Series, parallel or series-parallel connection of batteries bank is ???



This guide provides a comprehensive list of the 21 essential tools needed for every stage of a solar panel installation, from initial inspection to maintenance. allowing the solar panels to face the sun directly and maximize sunlight collection. 12. Tape measure Lifting equipment. Depending on the roof pitch and accessibility, ladders



EVERYTHING NEEDED FOR SOLAR PANEL PRODUCTION. Nowadays the solar panels" production equipment is divided into the following required machinery and accessories. The first run automated processes are the stringing and lamination, but also the analysis of quality as electroluminescence tests. These and other procedures are ???



# WHAT EQUIPMENT IS REQUIRED FOR SOLAR POWER



The article discusses the essential equipment needed to build a solar power system, highlighting the benefits of solar energy for reducing electricity costs and carbon footprint. It breaks down the components of a solar power system, including solar panels, charge controllers, power inverters, solar batteries, and complete solar kits.



The equipment you'll need to clean solar panels varies depending on the location and the number of panels. The number of panels also influences the type of equipment you'll need. If you're attempting to clean a few dozen panels, you can get the job done with the help of a leaf blower, garden hose, and scrub brush.



Step 3: Calculate the capacity of the Solar Battery Bank. In the absence of backup power sources like the grid or a generator, the battery bank should have enough energy capacity (measured in Watt-hours) to sustain operation for several days during periods of ???



# WHAT EQUIPMENT IS REQUIRED FOR SOLAR POWER



Toggle Navigation. Home; About Us; Our Products. Solar Products. Solar Kits; Solar Panels The RenewSys Solar Modules are manufactured on state-of-the-art equipment, and use certified components from world class suppliers. The three most critical components ??? EVA Encapsulant, Backsheet and Cell ??? are manufactured in-house, ensuring highest quality and reliability.



However, you should also educate yourself on the solar energy equipment required to get your system up and operating. While the components of a PV system are basic, the various product options and brands may make the equipment selection process somewhat difficult. Solar panels are now utilized in a variety of electrical devices such as



Solar panel setups should also have a disconnect switch that will turn off the solar panel system. Many solar panel systems have two disconnect switches: a DC disconnect (disconnecting the DC current between the solar ???



# WHAT EQUIPMENT IS REQUIRED FOR SOLAR POWER



An ideal solar power plant is safe, has minimal downtime, delivers high performance, and lasts its intended lifetime of 25 years. While solar panels make up the largest and most important part of the solar power plant, a combination of equipment and devices is needed to make a solar plant fully functional.



Your solar energy installer and local utility company can provide more information on the exact steps you will need to take to power your home with solar energy. Investigate your home's energy efficiency. Assess your solar potential and any ???



Residential solar systems and commercial solar system components are the same ??? they'll just vary in size and number, according to the amount of power needed on a consistent basis. PV solar panels. The purpose of solar panels is to generate energy. How does it do this? Solar panels are made up of photovoltaic cells, also called solar cells.