

Which planets are in order from the Sun?

The planets in order from the sun are Mercury, Venus, Earth, Mars, Jupiter, Saturn, Uranus, Neptune and finally the dwarf planet Pluto. Most people have at least heard about our solar system and the planets in it. Our solar system is usually gone over in elementary school, so you might just need a refresher course about

Is Pluto a planet?

According to the definition, a planet is a celestial body that is in orbit around the Sun, has enough mass to assume hydrostatic equilibrium - resulting in a round shape, and has cleared the neighborhood around its orbit. Many still consider Pluto as a planet this day.

Is Pluto a dwarf planet?

Pluto is the ninth largest object orbiting the Sun and was known as the ninth planet until 2006 when the definition of a planet was changed, and it was reclassified as a dwarf planet. Pluto is located in the Kuiper belt and has a different orbit when compared to the other planets in that it is both elliptical and tilted.

How is Pluto different from other planets?

Pluto is located in the Kuiper belt and has a different orbit when compared to the other planets in that it is both elliptical and tilted. The dwarf planet is made of ice and rock and is the largest trans-Neptunian object by volume and rotates similarly to Venus and Neptune (spinning east to west).

How are the planets listed in order?

Using this method, the planets are listed in the following order: AU stands for astronomical units - it's the equivalent to the average distance from Earth to the sun (which is why Earth is 1 AU from the sun). It's a common way astronomers measure distances in the solar system that accounts for the large scale of these distances.

Should Pluto be included in a planet list?

If you insist on including Pluto, it would come after Neptune on the list. Pluto is truly way out there and on a wildly tilted, elliptical orbit (two of the several reasons it was demoted).

WHAT IS PLUTO S ORDER FROM THE SUN



Pluto's orbit around the Sun is unusual compared to the planets: it's both elliptical and tilted. Pluto's 248-year-long, oval-shaped orbit can take it as far as 49.3 astronomical units (AU) from the Sun, and as close as 30 AU. (One AU is the ???)



According to the National Aeronautics and Space Administration (NASA), the solar system is made up of the Sun and everything else that is bound to it through gravity, including planets Mercury, Venus, Earth, Mars, Jupiter, Saturn, Uranus and Neptune, dwarf planets like Pluto, tens of moons, and millions of asteroids, comets, and meteoroids.



Given Pluto's distance away from the sun, it takes a tremendous amount of time for Pluto to complete one orbit. It takes Pluto 248 Earth years to orbit the sun once. Since Pluto was discovered in 1930, it has yet to complete a full orbit of the sun in the time its existence has been known. Pluto was discovered 92 years ago, and so it still has

WHAT IS PLUTO S ORDER FROM THE SUN



The Pluto is considered the 9 th planet in order from the sun. In order words, it is the farthest planet from the sun. Most times, its orbit crosses the orbit of Neptune and when this happens, Neptune becomes the farthest planet from the sun. Pluto has a surface temperature of -370 0 F (-220 0 C). It is the coldest planet in the solar system

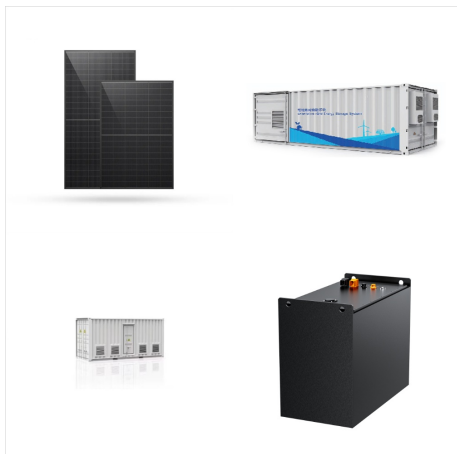


You can learn more about why Pluto is not a planet. Why the Order of the Planets is Important. Besides knowing the planets" order, we must also insert planets into one of two category systems. The first four planets in order from the Sun???Mercury, Venus, Earth, and Mars???are all small, with rocky surfaces and orbits close to one another



The planets in order from the Sun are based on their distance: Mercury, Venus, Earth (aka mother earth), Mars, Jupiter (father sky), Saturn, and Uranus with Neptune to round out at number 8! The solar system is an amazing place and there are plenty of planets to explore.

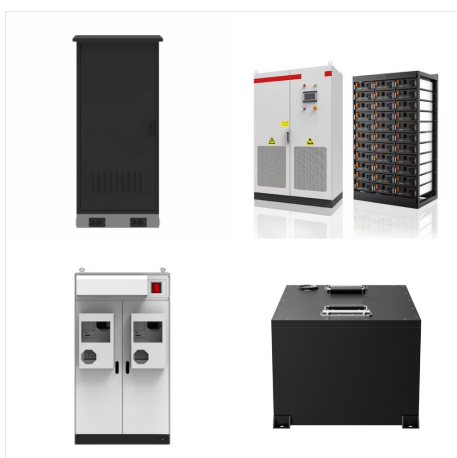
WHAT IS PLUTO S ORDER FROM THE SUN



Pluto's orbital period is long. It takes 248 years and its orbital characteristics are substantially different from every other planet in our Solar System; a year in Pluto is equivalent to 248 Earth years. As you already know, the planets orbit around the Sun on a flat reference plane which is called the ecliptic and [???



Pluto's orbit around the Sun is unusual compared to the planets: it's both elliptical and tilted. Pluto's 248-year-long, oval-shaped orbit can take it as far as 49.3 astronomical units (AU) from the Sun, and as close as 30 AU. (One AU is the mean distance between Earth and the Sun: about 93 million miles or 150 million kilometers.)

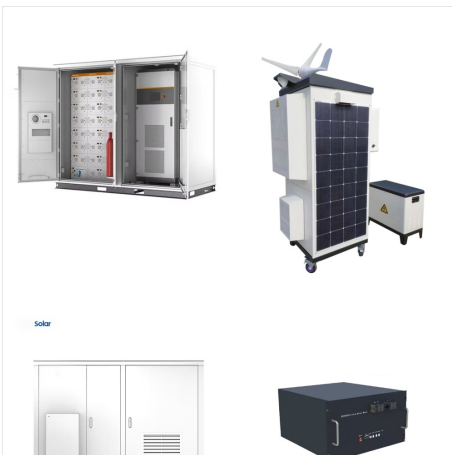


Dwarf planets in order from the Sun. As given in the above table, Ceres is the closest dwarf planet in our solar system and it is also IAU-defined. The IAU-defined farthest dwarf planet is Eris which is located in the scattered disc with a distance of around 67.78 AU from the sun.. 1. Largest Dwarf Planet (Pluto) Pluto is the largest dwarf planet in our solar system with a diameter of

WHAT IS PLUTO S ORDER FROM THE SUN



Earth was not regarded as a planet, but rather the core object around which all other celestial objects revolved. Aristarchus of Samos presented the first known model that positioned the Sun at the center of the known universe, with the Earth revolving around it, in the third century BCE, but it was not widely accepted. It wasn't until the 16th century that Nicolaus Copernicus ???



The distance among each of the eight planets in our Solar System will alter depending on where each planet is in its orbit revolution around the Sun. Depending on the time of year the distance can also differ significantly. The main reason for the planets to vary their distance is due to elliptical orbits.



Pluto (minor-planet designation: 134340 Pluto) is a dwarf planet in the Kuiper belt, a ring of bodies beyond the orbit of Neptune is the ninth-largest and tenth-most-massive known object to directly orbit the Sun is the largest known trans-Neptunian object by volume, by a small margin, but is less massive than Eris. Like other Kuiper belt objects, Pluto is made primarily of ice and rock

WHAT IS PLUTO S ORDER FROM THE SUN



Pluto's orbit is also different from the other main planets in our solar system, following an elliptical orbital path as opposed to the circular path the others take. As a result of its distance from the Sun, Pluto will complete each one of these elliptical ???



Mercury is the closest planet to the Sun and is the smallest planet in our Solar System after Pluto was reclassified as a dwarf planet in 2006. Mercury circles around the Sun in an egg-shaped orbit. Thanks to its egg-shaped orbit, ???



What is the position of the planets from the sun?
The Sun is orbited by eight official planets which are held in place by the sun's gravitational field. The planets Mercury, Venus, Earth, Mars, Jupiter, Saturn, Uranus, and Neptune are in the order of their distance from the Sun. However, this order of planets does not include the many dwarf

WHAT IS PLUTO S ORDER FROM THE SUN



Imagine a giant dinner table, where each planet is a distinct dish, carefully arranged in a specific order. Just as you wouldn't serve dessert before the main course, the planets follow a specific sequence, determined by their distance from the sun. Starting from the sun, the first planet is ???

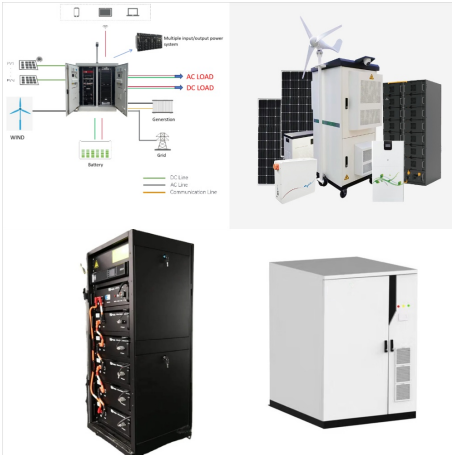


How Far is Pluto from the Sun? The distance between the Sun and Earth is equivalent to a unit of measure known as astronomical units (AU) and Pluto sits 39 AU away from our solar system's only star. This means on average it is 3.7 billion miles (5.9 billion kilometers) away from the Sun. Pluto's Structure



The dwarf planet Pluto is smaller than Mercury. In order outward from the Sun, the outer planets are Jupiter, Saturn, Uranus, and Neptune. Jupiter ??? The largest planet, Jupiter's radius is a staggering 69,911 km (43,441 mi), and its diameter is about 139,822 km (86,881 mi). It is 11.21 times the size of Earth.

WHAT IS PLUTO S ORDER FROM THE SUN



The semimajor axis (the average distance to the Sun) is given in units of the Earth's average distance to the Sun, which is called an AU. For example, Neptune is 30 times more distant from the Sun than the Earth, on average. Orbital periods are also given in units of the Earth's orbital period, which is a year.



Pluto has an equatorial diameter of about 1,477 miles (2,377 kilometers). Pluto is about 1/5th the width of Earth. Pluto orbits the Sun at a distance of about 3.67 billion miles (5.9 billion kilometers), or about 39 times ???



Study with Quizlet and memorize flashcards containing terms like Assess the relationship of each of the following to the Solar System., How much of the mass of the Solar System is in the planets, asteroids, and comets?, Order the following planets from closest (top) to farthest (bottom) from the Sun. and more.

WHAT IS PLUTO S ORDER FROM THE SUN



How Far is Pluto from the Sun? The distance between the Sun and Earth is equivalent to a unit of measure known as astronomical units (AU) and Pluto sits 39 AU away from our solar system's only star. This means on ???



The most common way to order the planets is by their distance from the sun. Using this method, the planets are listed in the following order: Contents. Planets in Order From the Sun. How to Remember the Order of the ???