

How does Powerwall work?

With variable rate plans, you can program Powerwall to use your stored energy when prices spike, saving money over time. Where grid support programs are available, you can send energy to the grid when demand is high or outages are likely. This supports the sustainable operation of the grid and may earn you credits for the energy you sell.

What is a Tesla Powerwall?

The Tesla Powerwall is a rechargeable lithium-ion battery stationary home energy storage product manufactured by Tesla Energy. The Powerwall stores electricity for solar self-consumption, time of use load shifting, and backup power. The Powerwall was introduced in 2015 as Powerwall 1 with limited production.

What is a Powerwall home battery?

Powerwall home battery continues Tesla's mission and makes clean energy accessible to all, day and night. For most homes, you can receive whole-home backup to power your entire home during an outage and have energy independence by producing energy with solar. You can also reduce your reliance on the grid and save money on utility bills.

Why should you use Powerwall?

When your solar system generates more energy than you need, you can store the extra energy with Powerwall and save it for later. Powerwall can also recharge from the grid when utility prices are low. Your stored energy is available whenever you need it--during the day, at night or when an outage occurs.

Where can I buy a Powerwall?

Powerwalls can be purchased from Tesla or from a Certified Powerwall Installer like Solar Technologies. If you want to change the way you power your home and save with clean energy, contact us today for a free customized quote.

What is Powerwall 3?

Powerwall 3 can supply more power with a single unit and is designed for easy expansion to meet your present or future needs. Powerwall 3 features an integrated solar inverter allowing solar to be connected directly for high efficiency; it can also be added to existing solar or installed on its own, like Powerwall 2.



Powerwall is a compact home battery that stores energy generated by solar or from the grid. You can use this energy to power the devices and appliances in your home day and night, during outages or when you want to go off-grid.



OverviewHistoryPowerwall
modelsTechnologyReturn-on-investment
calculationsCompetitionSee alsoExternal links



The initial Powerwall, unveiled in 2015, was a DC (direct current) home battery but has since been phased out. In 2016, the Powerwall 2 hit the scene, boasting an AC (alternating current) battery design with more than double the capacity of its predecessor. Early models of the Powerwall and its rivals like Sonnen and LG were DC batteries.



Powerwall adopters could trim a lot of fat, and possibly make their bets pay off, by owning their own equipment or by pooling community resources but, again, this is largely speculative [sources: Helman; Gangemi]. For now, Tesla's entry into the battery market is a gamble, and a big one. On the positive side, Tesla has already forged



27 in (686 mm) to base of Powerwall: Maximum Lift Capacity: 300 lb (136 kg) Lifting Mechanism: Lifting screw via 3/4 in (19 mm) socket: Lifting Power Source: 18-20V battery-powered drill (no impact drivers) 1: Brake Type: Single lever actuated dual hydraulic disc brakes: Wheel Type: Pneumatic tires: Model Number: 1856187-xx-y



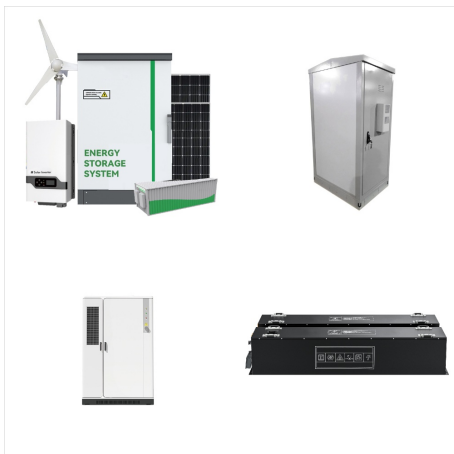
Powerwall is designed to qualify for the Federal Investment Tax Credit (ITC) when it is installed on an existing or new solar system and is charged 100% with solar energy. Discover more about state, utility and local energy incentives [here](#).



After seeing the price of a Powerwall, you might be tempted to try a DIY Powerwall solution or find a DIY Powerwall kit online. We want to advise heavily against this option. Installing a Powerwall or other battery storage system involves the knowledge of a trained and experienced professional electrician and an electrical permit for your local



Powerwall gives you the ability to store energy for later use and works with solar to provide key energy security and financial benefits. Each Powerwall system is equipped with energy monitoring, metering and smart controls for owner customisation using the Tesla app. The system learns and adapts to your energy use over time and receives over-the-air updates to add new ???

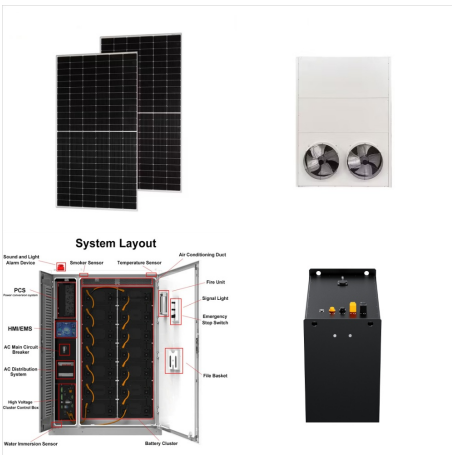


Powerwall and Backup Gateway units are rated for installation indoors or outdoors, and can operate within a wide range of temperatures, from -20°C to 50°C (-4°F to 122°F), though the optimum

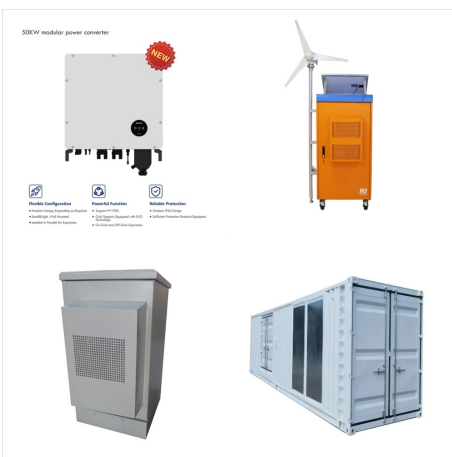
WHAT IS POWERWALL



Tesla Lithium NMC battery cells. The Powerwall 2 uses lithium NMC (Nickel-Manganese-Cobalt) battery cells developed in collaboration with Panasonic, which are similar to the Lithium NCA cells used in the Tesla electric vehicles. The original Powerwall 1 used the smaller 18650 size cells, while the Powerwall 2, reviewed here, uses the larger 21-70 cells, ???



The Tesla Powerwall is a home-based rechargeable lithium-ion battery designed to store solar power generated from Tesla's Solar Roof and Solar Panel systems for later use when the sun is not shining. The Powerwall also provides emergency backup, time-based control and other grid service applications.



A Tesla Powerwall is more expensive than many other solar battery systems, but with that price point comes higher storage capacity and more power output. Most homeowners pay around \$11,500 for a Powerwall, but exact prices vary based on how many units you purchase and where you purchase from.



Powerwall is a compact home battery that stores energy generated by solar or from the grid. You can use this energy to power the devices and appliances in your home day and night, during outages or when you want to disconnect from the grid.



The Powerwall 3 is best for homeowners installing new solar panel systems, especially if that system is large. Because of its high power output, it's also a great battery storage option for homeowners who want to run power-hungry ???



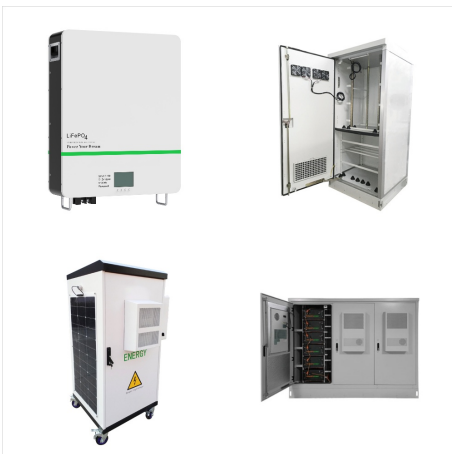
Power: Powerwall 3 can power over twice as much simultaneously as a standard LG Chem or SolarEdge battery. Note however that similar to a cellphone or laptop, battery life declines more quickly when using more energy all at once, so if you're anticipating a longer outage, being mindful of your usage is wise.



Powerwall is an intelligent system that can be customized to your energy needs, with the ability to charge from solar so energy is always available on demand. With Powerwall 3, supply more power with a single Powerwall unit to meet your present or future needs for your home. Learn more about what to expect with Powerwall 3.



Powerwall 3 is a fully integrated solar and battery system, designed to meet the needs of your home. Powerwall 3 can supply more power with a single unit and is designed for easy expansion to meet your present or future needs. Learn ???



The Powerwall 2 is a rechargeable lithium-ion battery. Lithium-ion batteries are relatively new technology, especially when used at the size of the Powerwall. They are incredibly efficient at storing energy, which is what the Powerwall strives to do.



Powerwall 3 is not (yet) certified for off-grid use. In regards to off-grid functionality, Tesla has not stated that off-grid use is not supported at this time. Like most hybrid all-in-one systems, the Powerwall inverter is grid ???



The Powerwall is designed to be a reliable backup power source for your home in case of a power outage. Compatibility: The Powerwall is compatible with a wide range of solar panel systems, making it a great option if you have or plan to install solar panels on your home.



Powerwall batteries are designed to require very little maintenance. Short of periodic inspections to ensure proper functioning and a few software updates to optimize performance, little action is required. Additionally, these tasks can usually be performed by homeowners without the need to pay for outside contractors or technicians.



If the Powerwall detects a power outage, then the Powerwall becomes your home's main power source. Powerwall Components. To understand how the Powerwall works, it helps to understand the components within the Powerwall, including:
Powerwall or Powerwall+: The Powerwall is the original product, while the Powerwall+ is the new and improved