



Renewable and alternative energy sources are often categorized as clean energy because they produce significantly less carbon emissions compared to fossil fuels. But they are not without an environmental footprint. Hydropower generation, for example, releases lower carbon emissions than fossil fuel plants do. However, damming water to build



Renewable energy can lessen the strain on the limited supply of fossil fuels, which are considered nonrenewable resources. Using renewable resources on a large scale is costly, and more research



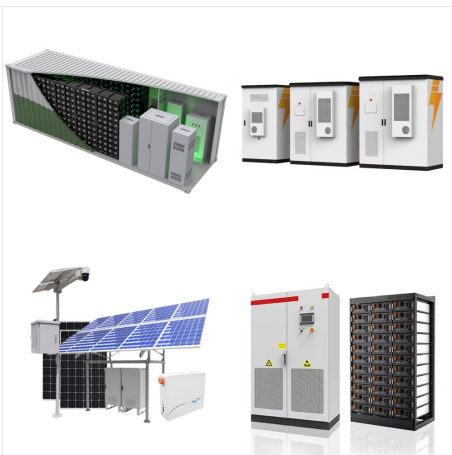
Nonrenewable energy comes from sources that will run out or will not be replenished in our lifetimes???or even in many, many lifetimes.. Most nonrenewable energy sources are fossil fuels: coal, petroleum, and natural gas. Carbon is the main element in fossil fuels. For this reason, the time period that fossil fuels formed (about 360-300 million years ???

# WHAT IS RENEWABLE AND NONRENEWABLE ENERGY SOURCES



Non-renewable energy resources cannot be replaced ??? once they are used up, they will not be restored (or not for millions of years).

Non-renewable energy resources include fossil fuels and nuclear power.. Fossil fuels. Fossil fuels (coal, oil and natural gas) were formed from animals and plants that lived hundreds of millions of years ago (before the time of the dinosaurs).



The United States uses a mix of energy sources. The United States uses and produces many different types and sources of energy, which can be grouped into general categories such as primary, secondary, renewable, or fossil fuels.. Primary energy sources include fossil fuels (petroleum, natural gas, and coal), nuclear energy, and renewable sources ???



In contrast, renewable energy sources accounted for nearly 20 percent of global energy consumption at the beginning of the 21st century, largely from traditional uses of biomass such as wood for heating and cooking 2015 about 16 percent of the world's total electricity came from large hydroelectric power plants, whereas other types of renewable energy (such ???

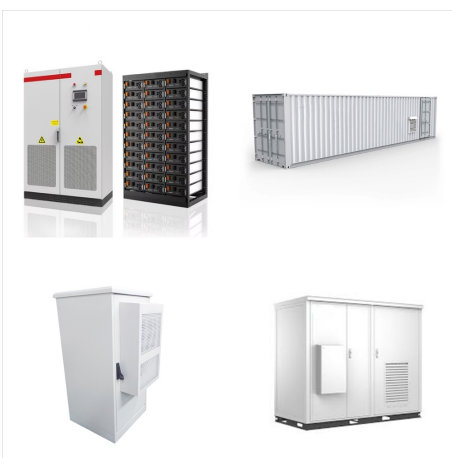
# WHAT IS RENEWABLE AND NONRENEWABLE ENERGY SOURCES



Renewable and Nonrenewable Resources. A natural resource is something supplied by nature that helps support life. When you think of natural resources, you may think of minerals and fossil fuels. However, ecosystems and the services they provide are also natural resources. Biodiversity is a natural resource as well.



The five major renewable energy resources are: Solar. Wind. Water, also called hydro. Biomass, or organic material from plants and animals. Geothermal, which is naturally occurring heat from the earth.



Non-renewable energy, also known as nonrenewable energy, is a limited resource that will eventually deplete over time. It is crucial to understand and responsibly utilise non-renewable energy sources. Non-renewable energy encompasses fossil ???

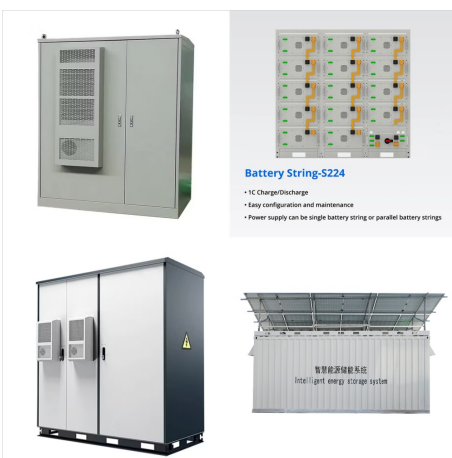
# WHAT IS RENEWABLE AND NONRENEWABLE ENERGY SOURCES



Renewable energy can play an important role in U.S. energy security and in reducing greenhouse gas emissions. Using renewable energy can help to reduce energy imports and fossil fuel use, the largest source of U.S. carbon dioxide emissions. According to projections in the Annual Energy Outlook 2023 Reference case, U.S. renewable energy consumption will ???



Each type of renewable energy contributes different amounts to our electricity mix, alongside non-renewable energy types such as fossil fuels or nuclear energy. Find out about the different types of renewable energy sources that we currently use for electricity and how they'll be used in the future to help further tackle climate change.



To reduce CO<sub>2</sub> emissions and local air pollution, the world needs to rapidly shift towards low-carbon sources of energy ??? nuclear and renewable technologies. Renewable energy will play a key role in decarbonizing our energy systems in the coming decades. But how rapidly is our production of renewable energy changing?



# WHAT IS RENEWABLE AND NONRENEWABLE ENERGY SOURCES



What are renewable and nonrenewable energy sources? A renewable energy source is a resource we can access infinitely; it's one that constantly replenishes itself without human involvement. Renewable energy sources come from natural elements such as wind, water, the sun and even plant matter.



Energy can be generally classified as non-renewable and renewable. Over 85% of the energy used in the world is from non-renewable supplies. Most developed nations are dependent on non-renewable energy sources such as fossil fuels (coal and oil) and nuclear power.



Renewable & Non-renewable . Energy Resources.  
A lesson about renewable and non-renewable sources of energy . for 4th, 5th and 6th grade.  
Teachers' notes. Lesson objectives. Objectives ???  
Students will be able to: Assessments . Understand how ???

# WHAT IS RENEWABLE AND NONRENEWABLE ENERGY SOURCES



Renewable energy is defined by the U.S. Environmental Protection Agency thus: "Renewable energy includes resources that rely on fuel sources that restore themselves over short periods of time and do not diminish" (Source: U.S. EPA).

Non-renewable energy is energy that cannot restore itself over a short period of time and does diminish.

It



Biomass was the primary source of U.S. energy consumption until the mid-1800s when the industrial revolution saw the introduction of non-renewable energy sources. However, many countries still use biomass energy as a leading fuel source, particularly where cooking and heating are concerned.



Coal, oil and natural gas are known as non-renewable sources of energy because they exist in limited quantities in nature. In other words, they are generated from finite resources or they take an extremely long time to regenerate. Nuclear energy is also a non-renewable energy source because the uranium it uses as fuel does not regenerate on its

# WHAT IS RENEWABLE AND NONRENEWABLE ENERGY SOURCES

---



With nonrenewable energy sources, they can produce a more constant power supply, as long as the necessary fuel is available. In comparison, renewable energy sources depend on unreliable sources such as wind and solar energy. Extraction and Storage; When it comes to nonrenewable energy sources, they are moderately cheap to extract.

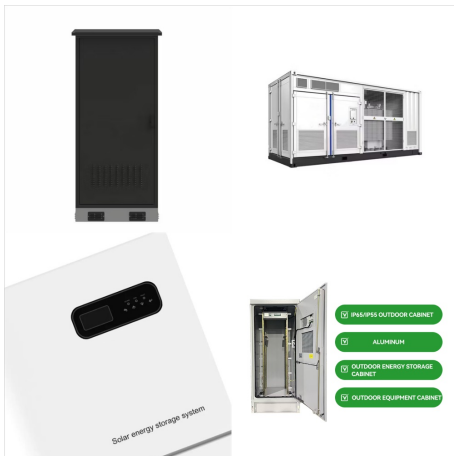


Non-renewable energy sources are slowly vanishing from the earth because they are formed over billions of years. 3. Since some non-renewable sources emit carbon monoxide, like fossil fuels, it means that non-renewable energy causes pollution and also, they can cause respiratory problems in humans. Sources like coal, oil and natural gas are



Nonrenewable energy sources, like coal, oil, and natural gas, cannot be easily replenished. A renewable energy source can be more easily replenished. Examples of renewable energy include wind, sunlight, ???

# WHAT IS RENEWABLE AND NONRENEWABLE ENERGY SOURCES



Non-renewable energy sources play a huge role in our lives and the way our world works today. However, there are some major concerns about our reliance on non-renewable energy sources. Firstly, there is only a limited supply, so these energy sources will run out one day. We will then need to find alternative energy sources.



Renewable energy is a collective term used to capture several different energy sources. "Renewables" typically include hydropower, solar, wind, geothermal, biomass, and wave and tidal energy. This interactive map shows the share of primary energy that comes from renewables (the sum of all renewable energy technologies) across the world.



A coal mine in Wyoming, United States. Coal, produced over millions of years, is a finite and non-renewable resource on a human time scale.. A non-renewable resource (also called a finite resource) is a natural resource that cannot be readily replaced by natural means at a pace quick enough to keep up with consumption. [1] An example is carbon-based fossil fuels.

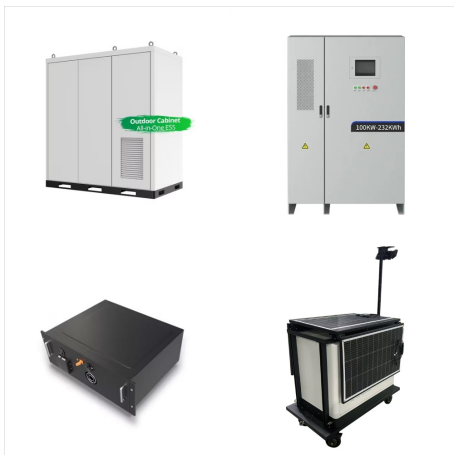


# WHAT IS RENEWABLE AND NONRENEWABLE ENERGY SOURCES

---



The difference between the two is one is non-renewable, and the other is renewable. Login. Study Materials. NCERT Solutions. NCERT Solutions For Class 12. Conventional Sources of Energy are also known as non-renewable sources of energy and are available in limited quantity apart from hydro-electric power. Further, it is classified under



Energy is one of the major inputs for the economic development of the country. Any sustainable energy source that comes from the natural environment is a renewable energy source. Renewable energy is inexhaustible and a clean alternative to fossil fuels. In this article, we will learn about the types and sources of renewable energy.