



Study with Quizlet and memorize flashcards containing terms like (A) The ultimate source of energy that drives wind power is _____. (B) A typical wind farm in the United States consists of _____. (C) The year 2030 goal set by the US Department of Energy is to generate _____. (D) Electricity in a wind turbine is generated _____.



Which of the following statements about using geothermal energy is not true? a. Geothermal energy can be used to fuel vehicles. b. Geothermal energy can be used as a source of electricity. c. Geothermal energy can be used as a source of heat. d. ???



a device that converts solar energy directly into electricity (aka. Solar cell) (a solar energy cell, usually made from silicon, that collects solar rays to generate electricity) ??? people can put solar cells on rooftops; they produce no greenhouse gases; however, one problem with them is that they are low energy efficiency (typically only



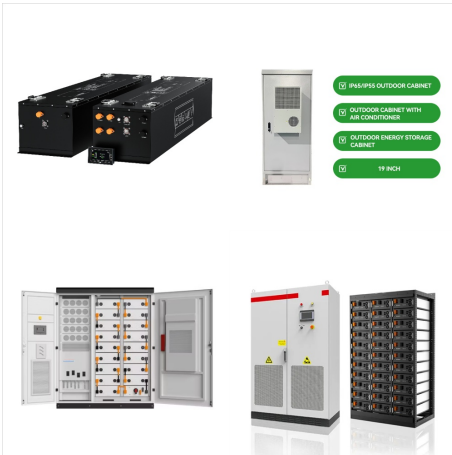
The answers to the Brainpop "Solar Energy" Quiz
Learn with flashcards, games, and more ??? for
free. Top creator on Quizlet. Share. The answers to
the Brainpop "Solar Energy" Quiz. Share. Get better
grades with Learn. 82% of students achieve A's
after using Learn. Study with Learn.



Study with Quizlet and memorize flashcards
containing terms like a solar heat collector is a
passive solar energy device that captures sunlight
and transforms radiant energy into heat energy T or
F?, Most of the energy that is radiated by the sun
reaches the surface of the earth, T or F?, Passive
solar tech integrates building design with
environmental factors to enable the capture ???



Referred to as "solar thermal energy conversion,"
and acts like a giant magnifying glass designed to
boil water into steam. The steam is pushed through
a turbine, and electricity is generated similarly to
how it would be at a traditional power plant.



The sun or solar is the principal energy source that drives the climate. It warms up the earth's surface and climate, causing changes in temperature and air pressure n-based energy is likewise pivotal for plants to deliver food and energy for other living things. While wind, mechanical, and heat energy are significant for nearby weather conditions, they don't affect ???



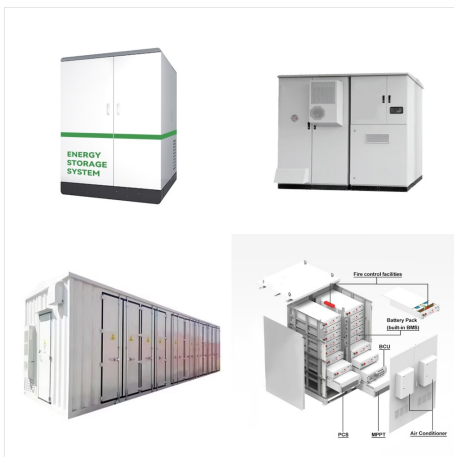
Study with Quizlet and memorize flashcards containing terms like What is Net Energy Metering (NEM), How many electric meters customer residence typically has?, Into which meter Omnidian have insight? and more. solar panels transform solar energy to DC power. It flows to inverter which converts DC to AC. The electrical current then flows to



Study with Quizlet and memorize flashcards containing terms like passive solar heating system, active solar heating system, Solar thermal systems and more. Solar energy can be converted directly into electrical energy by. photovoltaic (PV) cells, commonly called solar cells. About us. About Quizlet; How Quizlet works;



Study with Quizlet and memorize flashcards containing terms like What is solar thermal energy used to do???heat homes or power homes?, What part of the photovoltaic cell converts light to electricity?, Which practice fits the definition of conservation? and more.



Study with Quizlet and memorize flashcards containing terms like Solar energy is converted into the chemical energy of a carbohydrate molecule during the process of ., Carbon dioxide enters the plant leaf through the, What is the name of the structure that carries out photosynthesis in plant cells? and more.



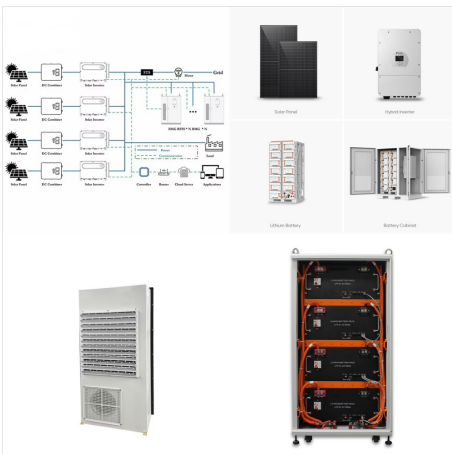
Study with Quizlet and memorize flashcards containing terms like What are the advantages and drawbacks of using solar energy?, How does nuclear power plants produce energy?, What percentage of our energy might be met by wind power over the next 60 years? and more.



Passive solar energy collection includes which of the following technologies? buildings designed and building materials chosen to maximize their direct absorption of sunlight. What is the reason that solar power provides for so little of our energy needs?



Active solar energy textbf{Active solar energy}
Active solar energy is used in active solar heating systems where a series of collectors textit{collectors} collectors series mounted on a roof or in a field absorb the sun's energy and pumps or fans distribute the collected heat. Active solar heating is primarily used for household water heating or for swimming pools.



Study with Quizlet and memorize flashcards containing terms like :3, All energy for biology comes from the sun. Photosynthesis traps solar energy in glucose. Cellular resp. releases energy in sugar for use. Photo. + Cell resp. are different., Photosynthesis and cellular respiration. CO₂, O₂, sugar/glucose, ATP (battery), H₂O. and more.



Study with Quizlet and memorize flashcards containing terms like Drag the labels from the left to their correct locations in the concept map on the right. Not all labels will be used., Plants are photoautotrophs. The basic function of the light reactions of photosynthesis is the conversion of solar energy to chemical energy. Why are plants



How is wind energy related to solar energy? a. Solar energy heats windmills and allows them to conduct electricity. b. Wind energy produces solar energy. c. Wind energy is the result of the sun's producing wind. d. Windmills turn to produce electricity that then increases the sun's power.



There are a lot of energy sources that people are using today, like:. fossil fuels (oil and gas) nuclear; wind; solar; geothermal; hydropower. We can divide energy sources into two types: non-renewable energy sources - the ones that have resources that can not be readily replaced naturally and can be used up,; renewable energy sources - the ones that have resources that ???



Study with Quizlet and memorize flashcards containing terms like Greenhouse Effect, Incoming solar energy absorbed by Earth's surface is later released to the atmosphere as energy in what form?, Greenhouse Effect and more.