

Which planet is closest to Earth?

But in around eight months, Venus will be the closest planet to us, and in another two months or so, Mars will have surpassed Venus as our closest neighbor. However, less than a month later Venus will have wrestled back the title. Which planet is closest to Earth on average? This is where things get really interesting.

Is Venus the closest planet to Earth?

But as an article in Physics Today points out, over half the time Venus is not the nearest planet; Mercury is. In fact, the scientists behind the article crunched the numbers and found that on average, Mercury is the closest planet not only to Earth but to every other planet in the solar system as well. Trippy.

Which planet is closest to the Sun?

Mercury is the closest planet to the Sun, orbiting at an average distance of 36 million miles (58 million kilometers). Mercury is 57 million miles closer to the Sun than Earth. Pluto is the largest dwarf planet in our solar system, just slightly larger than Eris, at number two.

What is the closest planet to Earth in 2024?

For example, when this article was written (January 2024), the closest planet to Earth was Mercury. But in around eight months, Venus will be the closest planet to us, and in another two months or so, Mars will have surpassed Venus as our closest neighbor. However, less than a month later Venus will have wrestled back the title.

Is Mercury closer to Earth than Venus?

Most of the time, Mercury is a little bit closer to Earth than Venus. What Is The Closest Planet To Earth? The closest planet to Earth varies between Mercury and Venus, yet Venus has the closest approach to Earth at 24-million miles (38-million kilometres).

Is Venus a planetary neighbor?

Venus is the second planet from the Sun, and Earth's closest planetary neighbor. Venus is the third brightest object in the sky after the Sun and Moon. Venus spins slowly in the opposite direction from most planets. Venus is similar in structure and size to Earth, and is sometimes called Earth's evil twin.

WHAT IS THE CLOSEST PLANET TO EARTH



Therefore, to find the planet closest to the Earth, we need to consider the planets' average distance throughout their orbit. Venus gets the closest to the Earth, but it is not always this close. In fact, at its farthest distance from Earth, Venus is a massive 160 million miles away.



Mercury is the closest planet to the Sun and is the smallest of the eight planets being only slightly larger than our moon. Mercury's surface temperatures vary in extremes reaching day temperatures as high as 800°F (430°C) and dipping as low as -290°F (-180°C), lacking the atmosphere to hold the heat at night. Earth is the third



How to Use the Planet Chart. Using the four buttons at the top, select either Distance from the Sun, Distance from the Earth, Size in the Sky, or Brightness to control how the planets are displayed.; Press the Play button at the bottom of the chart to make time move in fast forward mode. You can also move backward and forwards in time by sliding the hand cursor along the ???

WHAT IS THE CLOSEST PLANET TO EARTH



For this reason, scientists can argue that the closest planet to Earth is Venus, but they can also argue that the closest planet to Earth is Mercury. This is because, as the Earth and Venus orbit the Sun, they only pass by one another every so often. When this happens, Venus gets the closest to Earth out of any other planet - roughly 40 million



A majority are significantly larger than Earth, but a few have similar masses, including planets around YZ Ceti, A?a?uca, and Proxima Centauri which may be less massive than Earth. Several confirmed exoplanets are hypothesized to be potentially habitable, with Proxima Centauri b and GJ 1002 b (15.8 ly) considered among the most likely

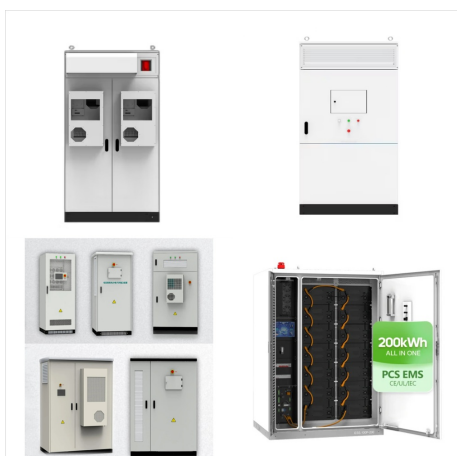


There's a range of around 223 million kilometers between Venus' farthest and closest points from the Earth. Although Venus comes the closest, Mercury stays closer to Earth for a lot longer than the previously mentioned planet. Mercury only gets within around 77 million kilometers when at its closest to Earth, however, it stays closest for a

WHAT IS THE CLOSEST PLANET TO EARTH



Alpha Centauri is the nearest star system. Distance from Earth 4,365 al (40 000 billion kilometers). The Sun (yellow star) distance from Earth 150 000 000 km, the exoplanet distance from Alpha Centauri b (orange star) 6 000 000 km. JPL is a federally funded research and development center managed for NASA by Caltech.

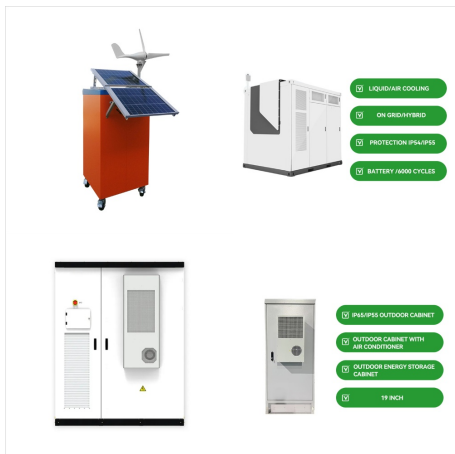


Just 11 light years from earth is the GJ 15 A star system with two planets orbiting a red-dwarf star. This makes it the closest solar system to Earth that contains multiple planets. The Alpha Centauri system is only 4.3 light years away but only contains one exoplanet, called Proxima B.



This paradoxically makes Mercury the closest planet to Earth, a plurality of the time. Mercury was named after the Roman messenger god, because of its fast movements around the Sun. Mercury is the closest planet to the Sun at a distance of 57.91 million kilometers / 35.98 miles or 0.4 AU away. It takes sunlight 3.2 minutes to travel from the

WHAT IS THE CLOSEST PLANET TO EARTH



Well, again, the answer to that is not exactly straightforward, as it tends to change. Sometimes, Mars is the closest planet to Earth. The closest that Mars comes to Earth in its orbit is 33.9 million miles away from it. In order to get an answer that is not subject to change, we must look at what planet is closest to the Earth on average.



The planets today shows you where the planets are now as a live display - a free online orrery. In this solar system map you can see the planetary positions from 3000 BCE to 3000 CE, and also see when each planet is in retrograde.



Venus is the second planet from the Sun, and Earth's closest planetary neighbor. Venus is the third brightest object in the sky after the Sun and Moon. Venus spins slowly in the opposite direction from most planets. Venus is similar in structure and size to Earth, and is sometimes called Earth's evil twin. Its thick atmosphere traps heat in a

WHAT IS THE CLOSEST PLANET TO EARTH



It turns out that Venus is, on average, 1.14 astronomical units (AU) from Earth, but Mercury is, on average, only 1.04 AU from Earth. An AU is a unit of length equal to the average distance ???

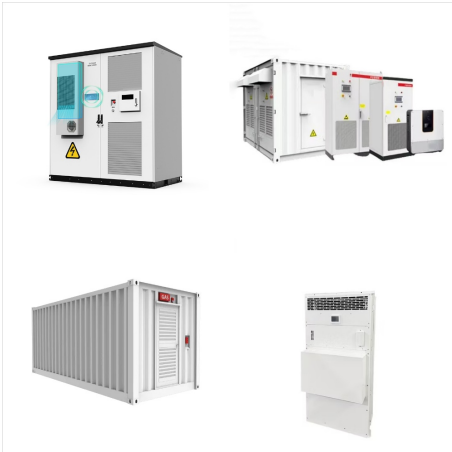


Venus is the second planet from the sun and the closest planet to Earth. Venus orbits the sun at an average distance of 0.722 AU, equating to 67-million miles on average. The orbit of Venus causes it to drift between 66 to 68-million miles from the sun. Earth is the third planet from the sun at an average distance of one AU. Scientists base



In such cases, Mercury may become the closest planet, with distances ranging from 82 to 217 million kilometers. Mercury is the nearest planet to Earth in this position. Its distance is shortened to 82 million kilometers. As can be observed, the situation is not entirely clear-cut to assert with confidence that Venus is the closest planet to Earth.

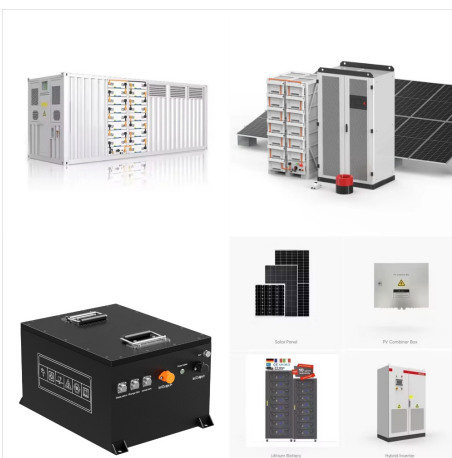
WHAT IS THE CLOSEST PLANET TO EARTH



Learn why Mercury is the true closest planet to Earth, despite Venus and Mars sometimes being closer to us. Find out how to calculate the average distances between planets and how they change over time.



At their closest, Mars is 55.7 million kilometers (34.6 million miles) from Earth but only 38.2 million kilometers (23.7 million miles) separates Venus and our planet. In relation to the sun, Venus is 108,200,000 kilometers (67,232,400 miles) away, Earth is 149,600,000 kilometers (92,957,100 miles), and Mars is 227,940,000 kilometers



Mercury is the closest planet to the sun and the smallest planet in the solar system ??? it is only a little larger than Earth's moon. Mercury zips around the sun in only 88 days and because it is

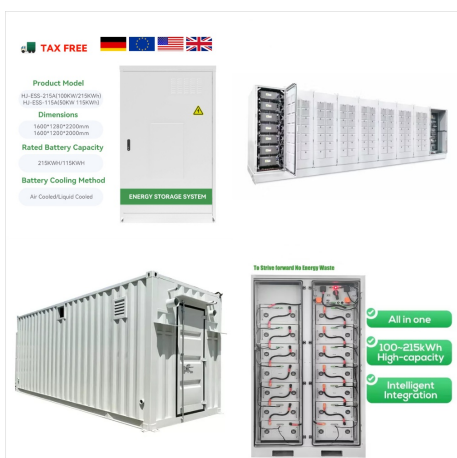
WHAT IS THE CLOSEST PLANET TO EARTH



Because of where the planets are on these orbital paths, and specifically the time it takes Mercury to orbit the sun, Mercury is the planet that is closest to Earth more often and has an average distance to Earth that is lower than the other 2 inner planets. Mars is occasionally the closest as well, but on average much further than Mercury or



It goes without saying the most Earth-like planet we know of is Earth. Barring a scenario where many Earths exist within a hypothetical multiverse, this is the only one we've got. NASA considers exoplanet Kepler-452b and its star to be the closest analog to our planet and Sun so far. Though it's 60% larger than Earth in diameter, Kepler



Well, again, the answer to that is not exactly straightforward, as it tends to change. Sometimes, Mars is the closest planet to Earth. The closest that Mars comes to Earth in its orbit is 33.9 million miles away from it. In order to get an answer that is not subject to change, we must look at what planet is closest to the Earth on average.

WHAT IS THE CLOSEST PLANET TO EARTH



The smallest planet in our solar system and nearest to the Sun, Mercury is only slightly larger than Earth's Moon. From the surface of Mercury, the Sun would appear more than three times as large as it does when viewed from Earth, and the sunlight would be as much as seven times brighter. Mercury is the second densest planet, after Earth



Although the elliptical orbit of Venus is closest to Earth's own, that doesn't mean that Venus itself is always the closest planet to us. Sometimes it is, sometimes it isn't. Each planet takes a different length of time to orbit the Sun 1 and so sometimes Mars is quite close to us while Venus is far away, on the other side of the Sun.



Mercury is the closest planet to the sun and the smallest planet in the solar system. Here we explore the strange world in more detail. It is the second densest planet after Earth, with a huge

WHAT IS THE CLOSEST PLANET TO EARTH



The closest planet to the Earth should be either the previous planet (Venus), or the following (Mars) Look up the mean radii of these planets orbits To find the average distance between Earth & Mars and Earth & Venus, subtract the smaller radius from the bigger one for each pair



Nearest Planet to Earth. The only discovered planetary system that is much known to man is our solar system. There are 12 planets in our solar system with 8 major and 5 dwarf planets. Mercury, Venus, Earth, Mars, Jupiter, Saturn, Uranus, Neptune are the major planets. And the Nearest Planet to Earth is Venus.



UNSW Australia astronomers have discovered the closest potentially habitable planet found outside our solar system so far, orbiting a star just 14 light-years away. 4.3 and 5.2 times that of Earth, respectively. The larger outer planet falls just outside the outer boundary of the habitable zone and is also likely to be rocky, while the

WHAT IS THE CLOSEST PLANET TO EARTH



If we look at the average distance between the orbits of two planets, then Venus is the closest planet to Earth, with an average distance of about 108 million km. Mars is the second closest, with



The Earth is 93 million miles from the sun. The nearest planet to Earth is Venus, which orbits at a distance of 67 million miles and sometimes passes within 26 million miles of Earth. Venus is extremely hot because of its carbon-dioxide rich atmosphere and has been ruled out as a candidate for life.