



Is a bright object near the Moon a star or a planet?

A bright object near the Moon can be a star or a planet. You can tell the difference by checking if the object twinkles. If it does, then it's a star; if not, it's a planet. Also, Jupiter and Venus (sometimes Mars and Saturn, too) are way brighter than most stars.

Which supermoon is highest in the sky in 2024?

A full moon rises opposite the sunset, is highest in the sky at midnight and lies low on the western horizon opposite the sunrise. This is the third of four supermoons in a row. And it's the Hunter's Moon, plus it's the closest - largest and brightest - supermoon in 2024.

How do I view planets and stars near our natural satellite?

To view the planets and stars near our natural satellite, choose a cloudless night and use Star Walk 2 or Sky Tonight to learn when the celestial objects are best placed for your location. For a visual explanation, watch our recently released video on how to identify bright objects near the Moon using the Sky Tonight app, step by step.

Will the Moon & Venus meet on November 4?

On November 4, the 9%-illuminated Moon and Venus (mag -4.0) will meet in the constellation Ophiuchus. The planet will be visible after sunset without any optical aid. As the event will occur three days after the New Moon, the lunar disc will be barely visible.

Where can I see the Moon on October 28 & 29?

To see a precise view - and time - from your location, try Stellarium Online. Chart via EarthSky. On the mornings of October 28 and 29, the thin waning crescent moon hangs above the eastern horizon near Denebola, the end star of the tail of Leo of Lion. The dark portion of the moon will be glowing with earthshine.

Which planets will be visible on November 17 & 20?

On November 17, the 98%-illuminated Moon and Jupiter (mag -2.8) will meet in the constellation Taurus. The planet will rise in the evening and will be visible to the naked eye. On November 20, the 77%-illuminated Moon and Mars (mag 0.2) will meet in the constellation Cancer. The planet will rise in the evening and will be

WHAT IS THE PLANET CLOSE TO THE MOON TONIGHT



visible to the naked eye.



Discover celestial objects visible tonight from your current location. Our guide automatically shows planets, stars, nebulae, and spacecraft flyovers you can see right now. Explore the night sky ???



What's up in tonight's sky? Create a custom map of the night sky for your location, learn what planets are visible, and locate the brightest stars. The map includes the Moon, stars brighter than magnitude 5, the five bright ???

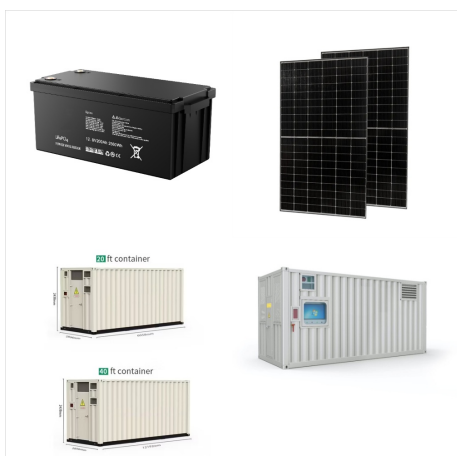


? What Planet is Next to the Moon Tonight? What are the Moon phases? The Moon is a spherical object, and it's consistently half-illuminated by the Sun in space. Yet, as the Moon travels around the Earth, its appearance in our sky is constantly changing. Near the equator, the Moon appears to be "on its side," so the waxing lunar disk is

WHAT IS THE PLANET CLOSE TO THE MOON TONIGHT



? An illustration of the moon and Saturn as they will appear in the night sky on Nov. 10, 2024. (Image credit: Chris Vaughan/Starry Night) Saturn gets close to the moon tonight, and skywatchers in



Sky map showing night sky tonight in Johannesburg, South Africa. What planets are visible? The Moon will be close to Saturn in the evening sky around November 10. Loading stars Our Interactive Night Sky Map simulates the sky above Johannesburg. The Moon and planets have been enlarged slightly for clarity. On mobile devices, tap

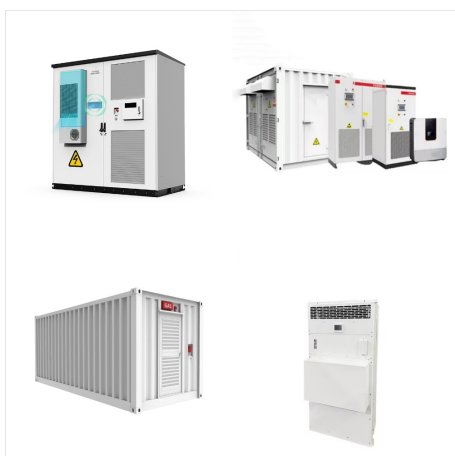


So be aware that just because the app may occasionally show a planet and a dwarf planet to be very close to each other in the plan view, they may, in fact, be separated by a large perpendicular distance. To see a some interesting solar system maps including "Space without the Space" and "If the moon were only 1 pixel", visit our Solar

WHAT IS THE PLANET CLOSE TO THE MOON TONIGHT



So, the moon had to travel that much more across the sky to catch up to Venus. Since the Moon appears to move across the sky at roughly 13-degrees per day, it needs three more days ($13 \times 3 = 39$)



These dots are planets that will be visible near the moon during January. Why is Venus so close to the moon tonight? The moon goes through its monthly orbit around the Earth, while Venus

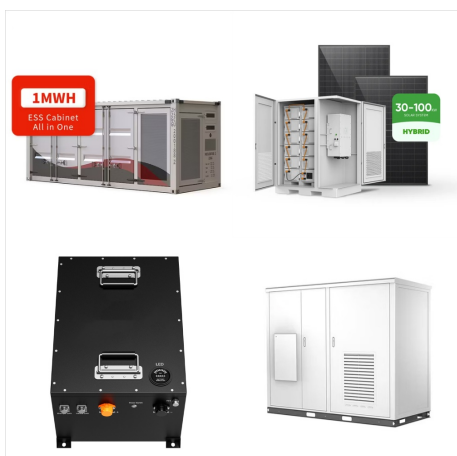


The full Moon of November is known as the Frost Moon or Snow Moon. Perigee November 14 Venus is the Sun's second-closest planet, and it shines as the dazzling Evening Star. Venus, the brilliant Evening Star, is quite low in the southwest as night falls. Tonight, it's close to the upper right of the crescent Moon. It will be a little

WHAT IS THE PLANET CLOSE TO THE MOON TONIGHT



Venus as it will appear in the night sky of November 2024. (Image credit: Chris Vaughan/Starry Night)
Venus sets about 2 hours after the sun on Nov. 1 and a healthy 3 hours after the sun on Nov. 30.



Discover celestial objects visible tonight from your current location. Our guide automatically shows planets, stars, nebulae, and spacecraft flyovers you can see right now. is a yellow giant located in the constellation Auriga. Its brightness and close proximity to the celestial north pole make it easily identifiable. More about Capella



Sky map showing night sky tonight in New Zealand, New Zealand. What planets are visible? The Moon will be close to Saturn in the evening sky around November 10???11 Loading stars Our Interactive Night Sky Map simulates the sky above New Zealand. The Moon and planets have been enlarged slightly for clarity. On mobile devices, tap to

WHAT IS THE PLANET CLOSE TO THE MOON TONIGHT



Now a look at Moon and planet pair-ups for October. On the 13th and 14th after dark, look for the nearly full Moon with Saturn toward the southeast. Then on the evening of October 20th, the Moon rises near Jupiter, with the giant planet looking extremely bright. You should be able to find them low in the east after around 10 pm that night.



Powered by Heavens Above, our interactive viewer charts the night sky as seen by eye. The map includes the Moon, stars brighter than magnitude 5, the five bright planets (Mercury, Venus, Mars, Jupiter, and ???)



Sky map showing night sky tonight in New York, New York, USA. What planets are visible? The Moon will be close to Saturn in the evening sky around November 10????11. Show Our Interactive Night Sky Map simulates the sky above New York. The Moon and planets have been enlarged slightly for clarity. On mobile devices, tap to steer the map by

WHAT IS THE PLANET CLOSE TO THE MOON TONIGHT



? What planets are visible tonight? Mercury is visible near the southwestern horizon following sunset on November 7, 2024. It is visible to the lower right of Venus. It sets around 45 minutes after sunset. It is easily visible to the naked eye if you have a clear view of the horizon. What planet is near the moon in the night sky tonight



Sky map showing night sky tonight in Dallas, Texas, USA. What planets are visible? Where is Mars, Saturn or Venus? What is the bright star in the sky? Sign in. News. News Home; Astronomy News; Moon???Saturn Close Approach. The Moon will be close to Saturn in the evening sky around November 10???11. Show Saturn on our Night Sky Map (below).

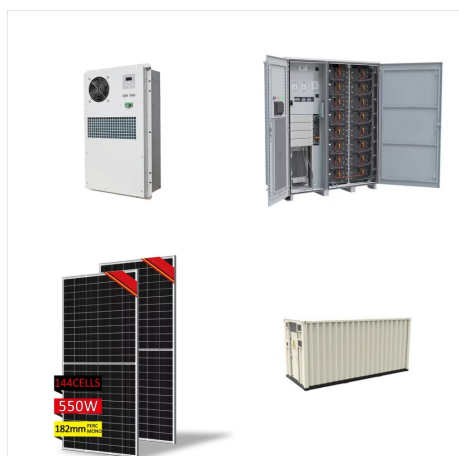


Tonight's Conjunctions. List of the closest conjunctions happening tonight between objects we are currently tracking, in order of increasing separation. The green arrow indicates that the objects are currently getting closer, while the red arrow means that ???

WHAT IS THE PLANET CLOSE TO THE MOON TONIGHT



Moon Phase for today and tonight with current lunar phase, illumination percentage and Moons age. Find out what the Moon Phase is on any other day of the year This is the first Phase after the New Moon and is a great time to see the features of the moon's surface. The moon is close to the sun in the sky and mostly dark except for the right



For a moon to stay in orbit, it would have to be reasonably close to a planet. Because of this, out of curiosity, you may ask yourself, What planet is closest to the moon right now? There are only a few planets close to the moon right now. Mercury, Venus, Earth. And they are the only planets that can be seen with the naked eye.



Moon Calendar. Set Observing Location. Tonight's Conjunctions. List of the closest conjunctions happening tonight between objects we are currently tracking, in order of increasing separation. The green arrow indicates that the objects are currently getting closer, while the red arrow means that the objects are increasing their apparent

WHAT IS THE PLANET CLOSE TO THE MOON TONIGHT



Five planets ??? Mercury, Jupiter, Venus, Uranus and Mars ??? will line up near the moon. Keep an eye to the sky this week for a chance to see a planetary hangout. Five planets ??? Mercury