

What is Earth known for?

Earth, third planet from the Sun and the fifth largest planet in the solar system in terms of size and mass. Its single most outstanding feature is that its near-surface environments are the only places in the universe known to harbour life. It is designated by the symbol ?.

Why is Earth called Earth?

Just slightly larger than nearby Venus, Earth is the biggest of the four planets closest to the Sun, all of which are made of rock and metal. Earth is the only planet in the solar system whose English name does not come from Greek or Roman mythology. The name was taken from Old English and Germanic. It simply means "the ground."

Is Earth a Living Planet?

Earth - our home planet - is the third planet from the Sun, and the fifth largest planet. It's the only place we know of inhabited by living things. While Earth is only the fifth largest planet in the solar system, it is the only world in our solar system with liquid water on the surface.

How big is the Earth?

Earth has a rounded shape, through hydrostatic equilibrium, with an average diameter of 12,742 kilometres (7,918 mi), making it the fifth largest planetary sized and largest terrestrial object of the Solar System.

Where is Earth located?

Earth is located in the Orion-Cygnus Arm, one of the four spiral arms of the Milky Way, which lies about two-thirds of the way from the centre of the Galaxy. What is Earth named for? What was Earth like when it was first formed? Earth and the other planets in the solar system formed about 4.6 billion years ago.

How many planets are in Earth?

"Earth". The Nine Planets, A Multimedia Tour of the Solar System: one star, eight planets, and more. Archived from the original on 23 August 2000. Retrieved 9 March 2010. ^Monroe, James; Wicander, Reed; Hazlett, Richard (2007).



Soup Earth Society is a Floridian animator who is most known for creating his very own Number Lore, which is based on Mike Salcedo's Alphabet Lore. This Wiki has a clear set of rules in which you must strive to follow. Read the rules very carefully as failure to do so will lead to a block, being eternal in most cases. To ensure all cases of rule breaking are dealt with immediately, follow ???



The Number of the Beast Is 666 by William Blake. The number of the beast (Koin?? Greek: ? 1/4 ??????, ? 1/4 ? 1/2 ,?? ??????? ? ,???????????, Arithm?s to? th??r?ou) is associated with the Beast of Revelation in chapter 13, verse 18 of the Book of Revelation most manuscripts of the New Testament and in English translations of the Bible, the number of the beast is six hundred sixty-six or ??? 3/4 ?? (in



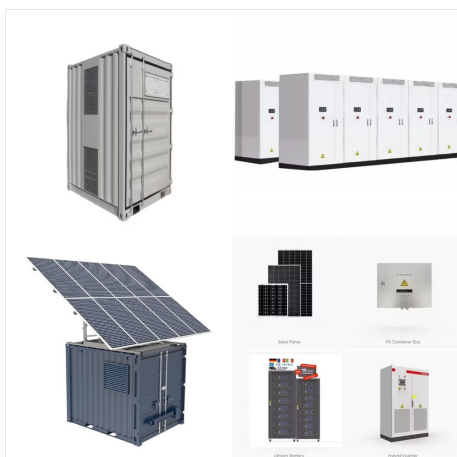
True color image of the Earth from space. This image is a composite image collected over 16 days by the MODIS sensor on NASA's Terra satellite. NASA Earth science satellite fleet as of September 2020, planned through 2023. ???



The total number of atoms in the world is about  $10^{50}$ . This accounts 98.8% of the Earth's mass, which is a decent approximation. The number of atoms in the world is the sum of the number of atoms of each element, which is around  $1.35 \times 10^{50}$  atoms..  
Comparing Atoms in the Earth to Way of Arranging a Deck of Cards



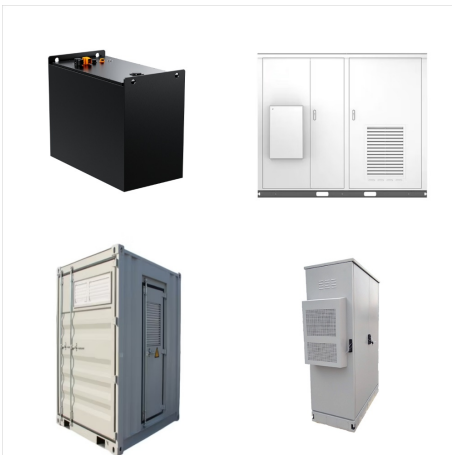
Number Lore is owned by Soup Earth Society.  
Make your own number lore Comic Studio by Evil\_one (cancelled) Russian Alphabet Lore Comic Studio by BlockyFunnyDoings. Super Smash Society Comic Studio by SOIL. Browse Studios. Maintained by SOIL, Jackmoo101, Rocket06, WTB124theidiot & yummypizza491



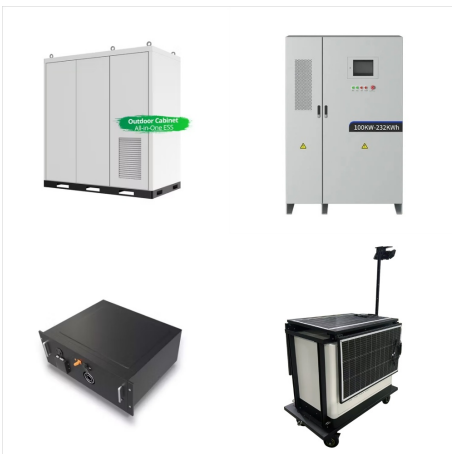
The natural history of Earth concerns the development of planet Earth from its formation to the present day. [1] [2] [17] [18] Estimates on the number of Earth's current species range from 10 million to 14 million, [19] of which about 1.2 million are documented,



More than 99 percent of all species, amounting to over five billion species, [7] that ever lived on Earth are estimated to be extinct. [8] [9] Estimates on the number of Earth's current species range from 10 million to 14 million, [10] of which about 1.2 million have been documented and over 86 percent have not yet been described. [11] According to another study, the number of described ???



Earth at seasonal points in its orbit (not to scale)  
Earth orbit (yellow) compared to a circle (gray) Earth orbits the Sun at an average distance of 149.60 million km (92.96 million mi), or 8.317 light-minutes, [1] in a counterclockwise direction as ???



There are a vast number of small Solar System bodies, such as asteroids, comets, centaurs, meteoroids, Earth's atmosphere contains 78% nitrogen and 21% oxygen, which is the result of the presence of life. [103] [104] The planet has a complex climate and weather system,



True color image of the Earth from space. This image is a composite image collected over 16 days by the MODIS sensor on NASA's Terra satellite. NASA Earth science satellite fleet as of September 2020, planned through 2023. Earth observation satellite missions developed by the ESA as of 2019.. Earth observation satellites are Earth-orbiting spacecraft with sensors used ???



A star that hosts planets orbiting around it is called a planetary system, or a stellar system, if more than two stars are present. Our planetary system is called the Solar System, referencing the name of our Sun, and it hosts eight planets.. The eight planets in our Solar System, in order from the Sun, are the four terrestrial planets Mercury, Venus, Earth, and Mars, followed by the two gas



World population density The world population density is 59.9 people per square kilometer (155.0 per mi<sup>2</sup>) as of November 2024. This number is calculated using 8,147,701,969 people as the world population and 136,120,354 km<sup>2</sup> ???





For more than 50 years, NASA satellites have provided data on Earth's land, water, air, temperature, and climate. NASA's Earth Information Center allows visitors to see how our planet is changing in six key areas: sea level rise and coastal impacts, health and air quality, wildfires, greenhouse gases, sustainable energy, and agriculture.



This person is a voice actor. 25 new.png Christian K., better known as Soup Earth Society, is a Floridian animator, editor and voice actor on . He has been on the site since September 7th 2020, and gained most of his popularity through his now cancelled Number Lore and Math Lore series, both series inspired by Mike Salcedo's Alphabet Lore. Soup Earth Society started ???



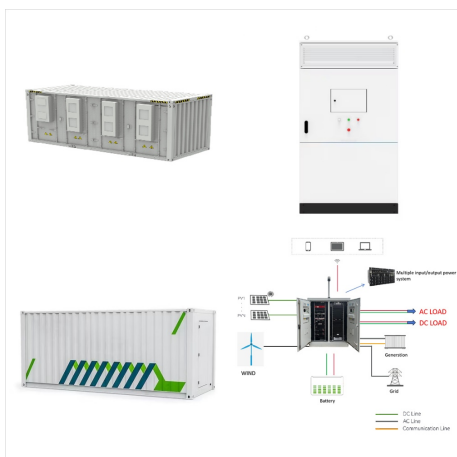
? Source and Notes. Source: U.S. Census Bureau, International Database (demographic data) and USA Trade Online (trade data). Populations shown for the Most Populous Countries and on the world map are projected to July 1, 2024.



Earth is the third planet from the Sun and it is the fifth-largest planet. Earth's orbit around the Sun is 365.25 days, rotating on a tilted axis which is responsible for the four seasons. Earth's gravity interacts with the Moon, its only natural satellite, helping to stabilize Earth's axis orientation and slows its rotation causing tides.



The following table uses astronomical year numbering for dates, negative numbers corresponding roughly to the corresponding year BC (for example, ???8,000 = 8,000 BC, etc.). The table starts counting approximately 10,000 years before present, or around 8,000 BC, during the middle Greenlandian, about 1,700 years after the end of the Younger Dryas and 1,800 years before ???



United Nations Member States . There are 193 member states in the United Nations. This total is often cited inaccurately as the actual number of countries in the world; it's inaccurate because there are two other members with limited status (both the Vatican???an independent nation officially known as the Holy See???and the Palestinian Authority???a quasi ???



Earth Mean Orbital Elements (J2000) Semimajor axis (AU) 1.00000011 Orbital eccentricity 0.01671022 Orbital inclination (deg) 0.00005 Longitude of ascending node (deg) -11.26064 Longitude of perihelion (deg) 102.94719 Mean Longitude (deg) 100.46435