

Can the Moon get close to bright planets in the sky?

The Moon can also get close to bright planets in the sky which is always a spectacular sight. Here, you'll find useful tips on when it's best to observe the Moon in the sky and learn lots of fun facts about our natural satellite. October 2024: What Planet is Next to the Moon Tonight? What is that bright dot shining near the Moon tonight?

Which planet is closest to the Sun?

Mercury is the closest planet to the Sun, orbiting at an average distance of 36 million miles (58 million kilometers). Mercury is 57 million miles closer to the Sun than Earth. Pluto is the largest dwarf planet in our solar system, just slightly larger than Eris, at number two.

Is a bright object near the Moon a star or a planet?

A bright object near the Moon can be a star or a planet. You can tell the difference by checking if the object twinkles. If it does, then it's a star; if not, it's a planet. Also, Jupiter and Venus (sometimes Mars and Saturn, too) are way brighter than most stars.

How close is Venus to the Moon?

On June 26, at 08:11 GMT (4:11 a.m. EDT), Venus and the barely visible Moon crescent will appear close. The distance between them will be  $2^{\circ}41'$ . They can be found in the constellation Taurus. No optical devices are needed: Venus will shine at a magnitude of -3.9, bright enough for the unaided eye.

Where is the best place to see a Jupiter & Moon conjunction?

The tropics and the Southern Hemisphere will be the best spots to observe the conjunction. The beginning of February brings us the conjunction of the Moon and Jupiter. On February 2, at 21:08 GMT (4:08 p.m. EST), our natural satellite will pass  $4^{\circ}19'$  to the south of the planet.

How do I view planets and stars near our natural satellite?

To view the planets and stars near our natural satellite, choose a cloudless night and use Star Walk 2 or Sky Tonight to learn when the celestial objects are best placed for your location. For a visual explanation, watch our recently released video on how to identify bright objects near the Moon using the Sky Tonight app, step by

# WHAT PLANET IS CLOSEST TO THE MOON



step.



Now a look at Moon and planet pair-ups for October. On the 13th and 14th after dark, look for the nearly full Moon with Saturn toward the southeast. Then on the evening of October 20th, the Moon rises near Jupiter, with the giant planet looking extremely bright. You should be able to find them low in the east after around 10 pm that night.



The instantaneous Earth???Moon distance, or distance to the Moon, is the distance from the center of Earth to the center of the Moon contrast, the Lunar distance (LD or ), or Earth???Moon characteristic distance, is a unit of measure in astronomy. More technically, it is the semi-major axis of the geocentric lunar orbit. The lunar distance is on average approximately 385,000 km ???



Usually the term moon brings to mind a spherical object, like Earth's Moon. The two moons of Mars, Phobos and Deimos, are different. While both have nearly circular orbits and travel close to the plane of the planet's equator, they are lumpy and dark. Phobos is slowly drawing closer to Mars and could crash into the planet in 40 or 50 million years.

# WHAT PLANET IS CLOSEST TO THE MOON



Of all the moons in the Solar System, the one which orbits closest to its planet is the tiny Martian satellite, Phobos. Phobos is 9,378 km 5,827 miles from the centre of Mars - which corresponds to 5,981 km 3,716 miles above the Martian surface. Phobos is a small potato-shaped irregular moon, measuring 27 x 22 x 18 km (17 x 14 x 11 miles).



According to Star Walk, from Jan. 8-14, the planets that are visible next to the moon are Mercury, Venus, Saturn and Jupiter. When is the first full moon of 2024? How to see January's wolf moon in Arizona Why is Venus so close to the moon tonight? The moon goes through its monthly orbit around the Earth, while Venus orbits the sun.



The moon is a bit more than one-fourth (27%) the size of Earth, a much larger ratio (1:4) than any other moons to their planets. This means the moon has a great effect on our planet and may even

# WHAT PLANET IS CLOSEST TO THE MOON



??? After dark both nights, look for the nearly full Moon with Saturn toward the southeast. October 17 - Full moon; October 20 - The Moon rises near Jupiter, with the giant planet looking extremely bright. You should be able to ???



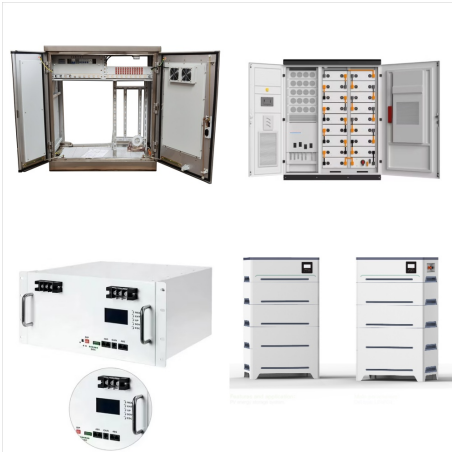
? The moon will hang close to Mercury on November 3, and it'll float close to Venus on November 4. Venus will continue to ascend and become a dazzling evening star through the end of the year.



The smallest planet in our solar system and nearest to the Sun, Mercury is only slightly larger than Earth's Moon. From the surface of Mercury, the Sun would appear more than three times as large as it does when viewed from Earth, and the sunlight would be as much as seven times brighter.



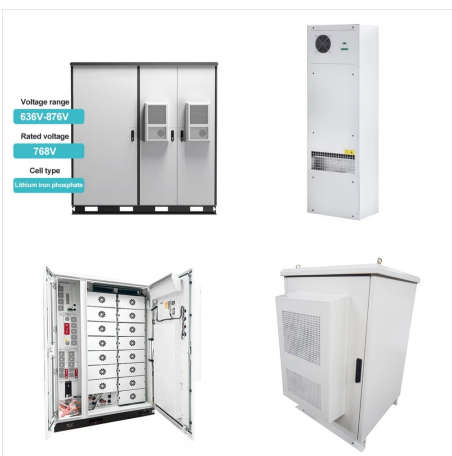
# WHAT PLANET IS CLOSEST TO THE MOON



The Moon and planets have been enlarged slightly for clarity. On mobile devices, For planet visibility in the coming night, please check again after 12 noon. Tonight's Sky in Clarksville, TN ???



Earth ??? Our home planet has a radius of 6,371 km (3,959 mi) and a diameter of 12,742 km (7,918 mi). Mars ??? The "Red Planet" has a radius of 3,390 km (2,106 mi) and a diameter of 6,779 km (4,212 mi), making it about 0.53 times the size of Earth. The asteroid belt separates the inner planets and the outer planets. The Outer Planets



? The moon will meet Mercury on the evening of November 3, Venus on the evening of November 4, Saturn on the evening of November 10, Uranus on the evening of November 15, Jupiter on the morning of November 17, and ???

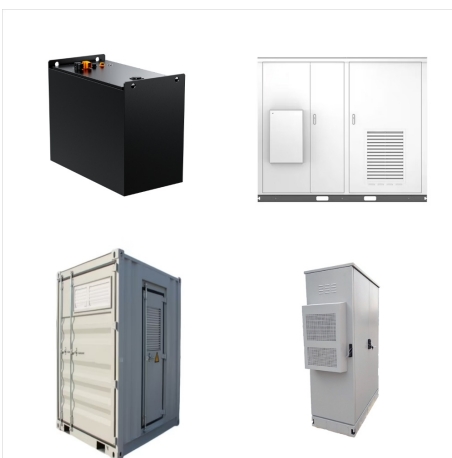
# WHAT PLANET IS CLOSEST TO THE MOON



For a moon to stay in orbit, it would have to be reasonably close to a planet. Because of this, out of curiosity, you may ask yourself, What planet is closest to the moon right now? There are only a few planets close to the moon right ???



This is a simple guide to the sizes of planets based on the equatorial diameter ??? or width ??? at the equator of each planet. Each planet's width is compared to Earth's equatorial diameter, which is about 7,926 miles (12,756 ???



The closest planet to Earth's Moon is the Earth itself. The distance is approximately 242,000 miles. The Earth and Moon as a binary system have Venus as the next closest planet at approximately

# WHAT PLANET IS CLOSEST TO THE MOON



The smallest planet in our solar system and nearest to the Sun, Mercury is only slightly larger than Earth's Moon. From the surface of Mercury, the Sun would appear more than three times as large as it does when viewed from Earth, and the sunlight would be as much as seven times brighter.



The main reason for the planets to vary their distance is due to elliptical orbits. No planet in our Solar System orbits the sun in a perfect circle which means that the distance between planets is never the same. For this reason, to calculate the distance, we use the average to measure how far planets are from one another.

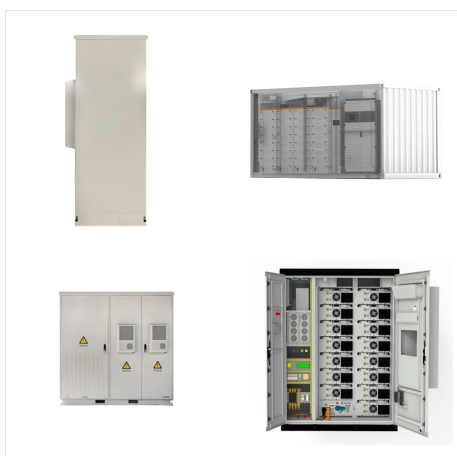


It's actually the planet Venus and it's the second closest planet to the sun. In the first week of the Moon's 27-day orbit of Earth, it glides past multiple planets, causing spectacular night sky vistas immediately after sunset. It tends to be most visible in November to December.

# WHAT PLANET IS CLOSEST TO THE MOON



Our solar system is made up of a star???the Sun???eight planets, 146 moons, a bunch of comets, asteroids and space rocks, ice, and several dwarf planets, such as Pluto. The eight planets are Mercury, Venus, Earth, Mars, Jupiter, Saturn, Uranus, and Neptune. Mercury is closest to the Sun. Neptune is the farthest.



The Moon can also get close to bright planets in the sky which is always a spectacular sight. Here, you'll find useful tips on when it's best to observe the Moon in the sky and learn lots of fun facts about our natural satellite. November 2024: What Planet is Next to the Moon Tonight? Oct 30, 2024 ~12 min. Astronomical News.



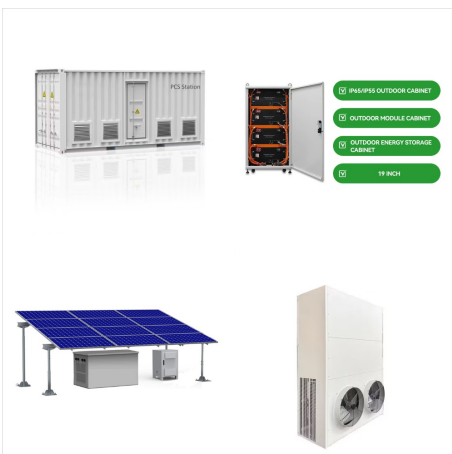
The four inner planets, or terrestrial planets, have solid, rocky surfaces. Earth, the third planet from the Sun, is the only planet with large amounts of liquid water, and the only planet known to support life. Earth has a large round moon. Mercury is ???



# WHAT PLANET IS CLOSEST TO THE MOON



What is the source of the fine, powdery dust found on the Moon's surface? a. it is sand, produced in exactly the same way sand is produced on the Earth's beaches b. it is the result of volcanic activity on the Moon over billions of years c. it is the result of many impacts, breaking surface rocks apart over billions of years d. it is the result of gas bubbling up from inside the Moon, ???



On opposition night, Uranus will be closest to Earth for this year ??? at a distance of 1.73 billion miles, 2.78 billion km, or 155 light-minutes. Gibbous: Used to describe a planet or moon