



Which planets will be visible on November 17 & 20?

On November 17, the 98%-illuminated Moon and Jupiter (mag -2.8) will meet in the constellation Taurus. The planet will rise in the evening and will be visible to the naked eye. On November 20, the 77%-illuminated Moon and Mars (mag 0.2) will meet in the constellation Cancer. The planet will rise in the evening and will be visible to the naked eye.

Which planets are currently visible?

See which planets are currently visible, along with their rise and set times, to help you plan your observations. Jupiter presents a captivating view with its prominent cloud bands, the iconic Great Red Spot, and up to four of its largest moons: Io, Europa, Ganymede, and Callisto.

Will Uranus & the full moon meet on November 15?

On November 15, the Full Moon and Uranus (mag 5.7) will meet in the constellation Taurus. The bright Pleiades star cluster will also shine nearby. The planet will appear in the sky in the evening. Note that Uranus is rather faint to be observed without any optical aid, so it's best to bring a pair of binoculars.

When can you see the Moon & Mars?

October 20 - The Moon rises near Jupiter, with the giant planet looking extremely bright. You should be able to find them low in the east after around 10 pm. October 23-24- Early risers will be able to spot Mars together with the Moon, high overhead in the south both mornings.

Which planets are visible at night?

Saturn's visible all night. Jupiter and Mars rise in the couple of hours after midnight and are visible in the southeast before sunrise. September 1-7 - If you're in the Northern Hemisphere, you can spot Mercury this week during morning twilight if you can find an unobstructed view toward the east. It appears low in the east just before dawn.

When will the Moon & Mars meet?

On November 20, the 77%-illuminated Moon and Mars (mag 0.2) will meet in the constellation Cancer. The planet will rise in the evening and will be visible to the naked eye. *The percentage of Moon illumination is for

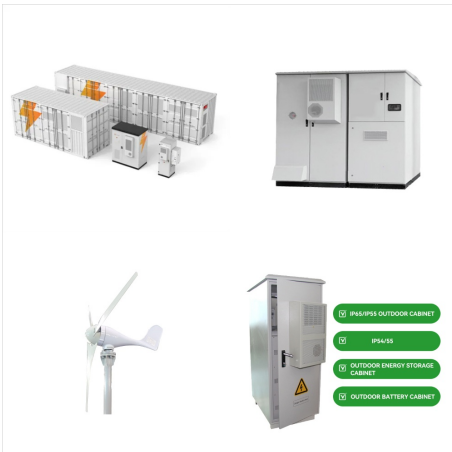
WHAT PLANET IS NEXT TO THE MOON RIGHT NOW



London. To find out the Moon illumination percentage for your location, check the lunar calendar.



The Moon and planets have been enlarged slightly for clarity. On mobile devices, tap to steer the map by pointing your device at the sky. Who's Closest Right Now? Play with our timeline to see the swings in the planets' distances from Earth. Moon Phase and Position. Find the Moon's illumination, distance, and latitude for any time on



The Moon and planets have been enlarged slightly for clarity. On mobile devices, tap to steer the map by pointing your device at the sky. Who's Closest Right Now? Play with our timeline to see the swings in the planets' distances from Earth. Moon Phase and Position. Find the Moon's illumination, distance, and latitude for any time on



The planets today shows you where the planets are now as a live display - a free online orrery. In this solar system map you can see the planetary positions from 3000 BCE to 3000 CE, and also see when each planet is in retrograde.

WHAT PLANET IS NEXT TO THE MOON RIGHT NOW



December 3-5: Venus and the Moon. Look southwest from just before sunset (until about two hours after sunset). On December 3, the Moon will be below and to the right of Venus. On December 4, the Moon will be hanging directly under Venus. By December 5, the Moon will be to the upper left of Venus. December 14: Jupiter and the Moon.



If you look low toward the east-northeast after 10 p.m. on Nov. 20 you'll see the waning gibbous moon ascending the sky and about 4 degrees to its upper right, you'll see a very bright orange



The Moon and planets have been enlarged slightly for clarity. On mobile devices, Who's Closest Right Now? Play with our timeline to see the swings in the planets' distances from Earth. Moon Phase and Position. Find the Moon's illumination, distance, and ???

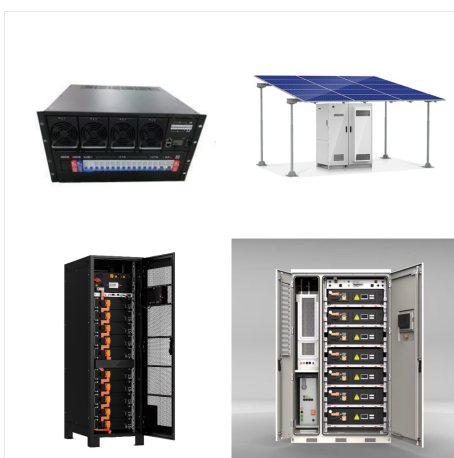
WHAT PLANET IS NEXT TO THE MOON RIGHT NOW



The Moon and planets have been enlarged slightly for clarity. On mobile devices, tap to steer the map by pointing your device at the sky. Who's Closest Right Now? Play with our timeline to see the swings in the planets' distances from Earth. Moon Phase and Position. Find the Moon's illumination, distance, and latitude for any time on



The Moon and planets have been enlarged slightly for clarity. On mobile devices, tap to steer the map by pointing your device at the sky. Who's Closest Right Now? Play with our timeline to see the swings in the planets' distances from Earth. Moon Phase and Position. Find the Moon's illumination, distance, and latitude for any time on



The Moon and planets have been enlarged slightly for clarity. On mobile devices, tap to steer the map by pointing your device at the sky. Who's Closest Right Now? Play with our timeline to see the swings in the planets' distances from Earth. Moon Phase and Position. Find the Moon's illumination, distance, and latitude for any time on

WHAT PLANET IS NEXT TO THE MOON RIGHT NOW



The Moon and planets have been enlarged slightly for clarity. On mobile devices, tap to steer the map by pointing your device at the sky. Who's Closest Right Now? Play with our timeline to see the swings in the planets' distances from Earth. Moon Phase and Position. Find the Moon's illumination, distance, and latitude for any time on



Planets Visible Tonight. Discover the planets that are currently visible in the night sky. Learn about their positions, rise and set times, and how to spot them from your location. Whether ???



For a moon to stay in orbit, it would have to be reasonably close to a planet. Because of this, out of curiosity, you may ask yourself, What planet is closest to the moon right now? There are only a few planets close to the moon right now. Mercury, Venus, Earth. And they are the only planets that can be seen with the naked eye.

WHAT PLANET IS NEXT TO THE MOON RIGHT NOW



What is the planet next to the moon right now?
According to Star Walk, from Jan. 8-14, the planets that are visible next to the moon are Mercury, Venus, Saturn and Jupiter. When is the first full



The Moon and planets have been enlarged slightly for clarity. On mobile devices, tap to steer the map by pointing your device at the sky. Who's Closest Right Now? Play with our timeline to see the swings in the planets' distances from Earth. Moon Phase and Position. Find the Moon's illumination, distance, and latitude for any time on



Discover celestial objects visible tonight from your current location. Our guide automatically shows planets, stars, nebulae, and spacecraft flyovers you can see right now. Explore the night sky ???

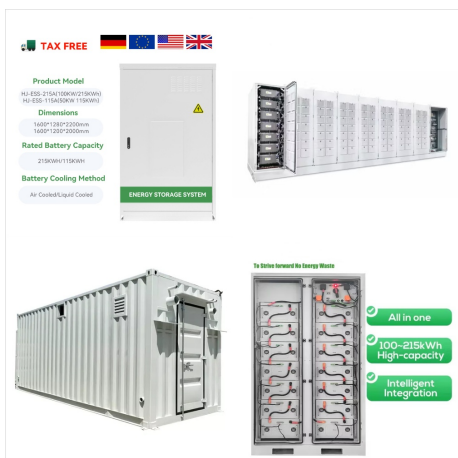
WHAT PLANET IS NEXT TO THE MOON RIGHT NOW



Which planets are visible tonight? What planet can I see tonight? Our Visible Planets Calculator displays the rise and set times of the planets each night, their location in the sky, and how illuminated they will be. More Astronomy Tools: Sunrise and Sunset Calculator; Moonrise and Moonset Calculator; Bright Stars Calculator



The Moon and planets have been enlarged slightly for clarity. On mobile devices, tap to steer the map by pointing your device at the sky. Who's Closest Right Now? Play with our timeline to see the swings in the planets' distances from Earth. Moon Phase and Position. Find the Moon's illumination, distance, and latitude for any time on

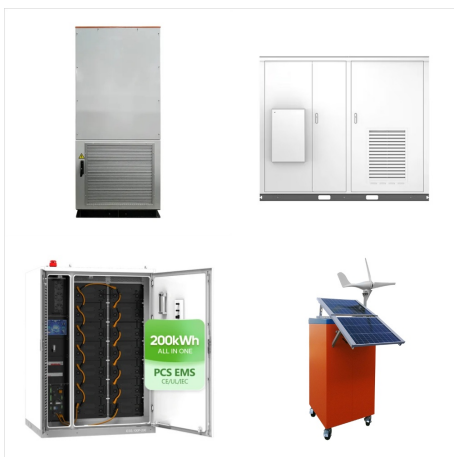


The Moon and planets have been enlarged slightly for clarity. On mobile devices, tap to steer the map by pointing your device at the sky. Who's Closest Right Now? Play with our timeline to see the swings in the planets' distances from Earth. Moon Phase and Position. Find the Moon's illumination, distance, and latitude for any time on

WHAT PLANET IS NEXT TO THE MOON RIGHT NOW



The Moon and planets have been enlarged slightly for clarity. On mobile devices, Who's Closest Right Now? Play with our timeline to see the swings in the planets' distances from Earth. Moon Phase and Position. Find the Moon's illumination, distance, and ???

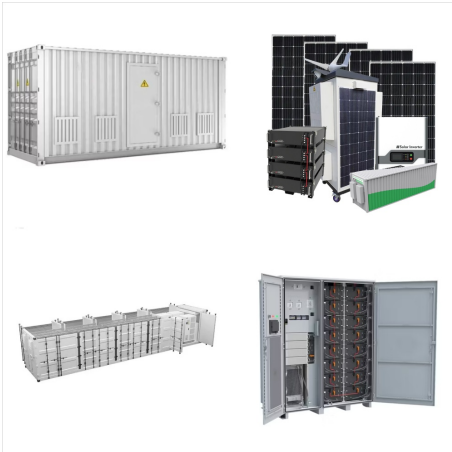


The Moon tonight is in Waxing Crescent phase in the constellation of Capricornus, at a distance of 382,080.0 kilometers from Earth. The current Right Ascension is 20h 24m 45s and the Declination is -24° 25' 31" (apparent coordinates). The magnitude of The Moon is -9.62 (data provided by JPL Horizons).. This image accurately depicts the Moon's current appearance, highlighting the key



October 17 - Full moon. October 20 - The Moon rises near Jupiter, with the giant planet looking extremely bright. You should be able to find them low in the east after around 10 ???

WHAT PLANET IS NEXT TO THE MOON RIGHT NOW



A conjunction can include other celestial objects besides planets ??? for example, moons, asteroids, or stars. In our article, we list the upcoming conjunctions of the Moon and planets, so you can learn which planet is close to the Moon tonight.

Planetary alignment



The interactive sky chart offers a lot in the way of customizing what you want to see. Chart the stars and planets visible to the unaided eye from any location, at any time of day or night, on any date between the years 1600 to 2400 by entering your location, either via zip code, city, or latitude/longitude.



The Moon and planets have been enlarged slightly for clarity. On mobile devices, tap to steer the map by pointing your device at the sky. Who's Closest Right Now? Play with our timeline to see the swings in the planets' distances from Earth. Moon Phase and Position. Find the Moon's illumination, distance, and latitude for any time on

WHAT PLANET IS NEXT TO THE MOON RIGHT NOW



The moon will meet Mercury on the evening of November 3, Venus on the evening of November 4, Saturn on the evening of November 10, Uranus on the evening of November 15, Jupiter on the morning of November 17, and ???