

Which planets are currently visible?

See which planets are currently visible, along with their rise and set times, to help you plan your observations. Jupiter presents a captivating view with its prominent cloud bands, the iconic Great Red Spot, and up to four of its largest moons: Io, Europa, Ganymede, and Callisto.

When is Uranus visible?

Uranus is visible high in the southwestern sky preceding sunrise on October 22, 2024. It is visible to the right of Jupiter. It rises around a couple of hours after sunset. As Uranus shines at the edge of naked-eye visibility, it is hardly visible to the unaided eye unless you have clear eyesight and a very dark sky.

Where is Jupiter visible in 2024?

Jupiter is visible high in the southern sky preceding sunrise on October 22, 2024. It is visible to the right of Mars. It rises around 3 hours after sunset. It is easily visible to the unaided eye. It is the brightest object in the morning sky (except for the moon).

Will Uranus be visible in November 2024?

Uranus will be visible very close to the full moon on the evening of November 15, 2024. Uranus will be brightest and visible almost all night in our sky in November 2024 as it will reach its opposition on November 17, 2024. At that time, Uranus will be located on the opposite side of the sun on our sky's dome.

Where can I find a detailed view of a planet?

See the indispensable Observer's Handbook, from the Royal Astronomical Society of Canada. Visit [Stellarium-Web.org](https://www.stellarium-web.org) for precise views from your location. Almanac: Bright visible planets (rise and set times for your location). Visit [TheSkyLive](https://www.theskylive.com) for precise views from your location.

Is Venus visible after sunset 2024?

Venus is visible near the western horizon following sunset on October 22, 2024. It sets around an hour after sunset. It is easily visible to the unaided eye. It is the brightest object in the evening sky (except for the moon). Venus is easier to spot in the southern hemisphere than in the northern hemisphere for this evening apparition.

WHAT PLANET IS TO THE EAST RIGHT NOW



The Moon and planets have been enlarged slightly for clarity. On mobile devices, tap to steer the map by pointing your device at the sky. Who's Closest Right Now? Play with our timeline to see the swings in the planets' distances from Earth. Moon Phase and Position. Find the Moon's illumination, distance, and latitude for any time on



The interactive sky chart offers a lot in the way of customizing what you want to see. Chart the stars and planets visible to the unaided eye from any location, at any time of day or night, on any date between the years 1600 ???



The Moon and planets have been enlarged slightly for clarity. On mobile devices, tap to steer the map by pointing your device at the sky. Who's Closest Right Now? Play with our timeline to see the swings in the planets' distances from Earth. Moon Phase and Position. Find the Moon's illumination, distance, and latitude for any time on

WHAT PLANET IS TO THE EAST RIGHT NOW



Our Interactive Night Sky Map simulates the sky above North East. The Moon and planets have been enlarged slightly for clarity. On mobile devices, Who's Closest Right Now? Play with our timeline to see the swings in the planets' distances from Earth. Moon Phase and Position. Find the Moon's illumination, distance, and latitude for any



The Moon and planets have been enlarged slightly for clarity. On mobile devices, tap to steer the map by pointing your device at the sky. Who's Closest Right Now? Play with our timeline to see the swings in the planets' distances from Earth. Moon Phase and Position. Find the Moon's illumination, distance, and latitude for any time on

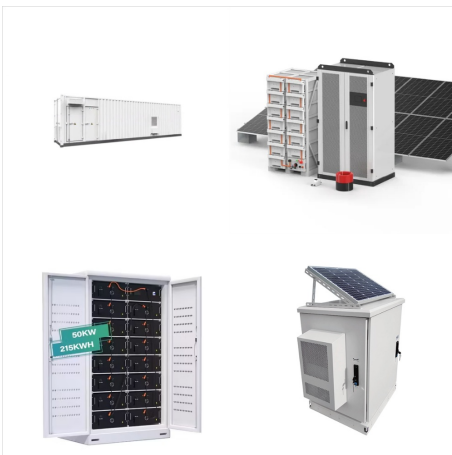


Chart the stars and planets visible to the unaided eye from any location, at any time of day or night, on any date between the years 1600 to 2400 by entering your location, either via zip code, city, or latitude/longitude. ???

WHAT PLANET IS TO THE EAST RIGHT NOW



The Moon and planets have been enlarged slightly for clarity. On mobile devices, Who's Closest Right Now? Play with our timeline to see the swings in the planets' distances from Earth. Moon Phase and Position. Find the Moon's illumination, distance, and ???



The Moon and planets have been enlarged slightly for clarity. On mobile devices, tap to steer the map by pointing your device at the sky. Who's Closest Right Now? Play with our timeline to see the swings in the planets' distances from Earth. Moon Phase and Position. Find the Moon's illumination, distance, and latitude for any time on



? Here are a few tips to identify planets in the night sky: Tip 1: Planets are not visible anywhere in the sky. They are visible along the ecliptic. The ecliptic is the path of the sun across the sky. So notice carefully where the sun rises, along which path it moves during the day and where it sets. Planets are visible along this path at night.

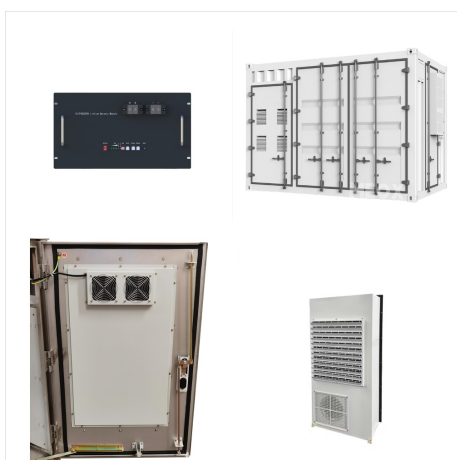
WHAT PLANET IS TO THE EAST RIGHT NOW



The Moon and planets have been enlarged slightly for clarity. On mobile devices, tap to steer the map by pointing your device at the sky. Who's Closest Right Now? Play with our timeline to see the swings in the planets' distances from Earth. Moon Phase and Position. Find the Moon's illumination, distance, and latitude for any time on



The Moon and planets have been enlarged slightly for clarity. On mobile devices, tap to steer the map by pointing your device at the sky. Who's Closest Right Now? Play with our timeline to see the swings in the planets' distances from Earth. Moon Phase and Position. Find the Moon's illumination, distance, and latitude for any time on



Jam packed issues filled with the latest cutting-edge research, technology and theories delivered in an entertaining and visually stunning way, aiming to educate and inspire readers of all ages

WHAT PLANET IS TO THE EAST RIGHT NOW



The Moon and planets have been enlarged slightly for clarity. On mobile devices, tap to steer the map by pointing your device at the sky. Who's Closest Right Now? Play with our timeline to see the swings in the planets' distances from Earth. Moon Phase and Position. Find the Moon's illumination, distance, and latitude for any time on



The planets today shows you where the planets are now as a live display - a free online orrery. In this solar system map you can see the planetary positions from 3000 BCE to 3000 CE, and also see when each planet is in retrograde.



The Moon and planets have been enlarged slightly for clarity. On mobile devices, tap to steer the map by pointing your device at the sky. Who's Closest Right Now? Play with our timeline to see the swings in the planets' distances from Earth. Moon Phase and Position. Find the Moon's illumination, distance, and latitude for any time on

WHAT PLANET IS TO THE EAST RIGHT NOW



The Moon and planets have been enlarged slightly for clarity. On mobile devices, tap to steer the map by pointing your device at the sky. Who's Closest Right Now? Play with our timeline to see the swings in the planets' distances from ???



Planets Visible Tonight. Discover the planets that are currently visible in the night sky. Learn about their positions, rise and set times, and how to spot them from your location. Whether ???



The Moon and planets have been enlarged slightly for clarity. On mobile devices, tap to steer the map by pointing your device at the sky. Who's Closest Right Now? Play with our timeline to see the swings in the planets' distances from Earth. Moon Phase and Position. Find the Moon's illumination, distance, and latitude for any time on

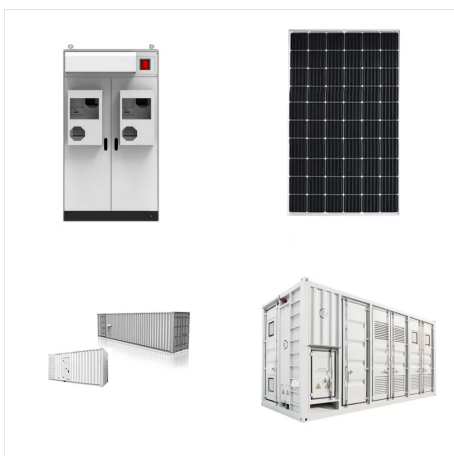
WHAT PLANET IS TO THE EAST RIGHT NOW



Mars: The Red Planet. When is Mars visible in 2024? Now until December: Look east before sunrise. (Mars becomes brighter as the year goes on.) Mars is easy to find in the night sky with the naked eye because of its distinctive color. It is nicknamed the Red Planet because it shines with an extremely off-white light.



The interactive sky chart offers a lot in the way of customizing what you want to see. Chart the stars and planets visible to the unaided eye from any location, at any time of day or night, on any date between the years 1600 to 2400 by entering your location, either via zip code, city, or latitude/longitude.



The Moon and planets have been enlarged slightly for clarity. On mobile devices, tap to steer the map by pointing your device at the sky. Who's Closest Right Now? Play with our timeline to see the swings in the planets' distances from Earth. Moon Phase and Position. Find the Moon's illumination, distance, and latitude for any time on

WHAT PLANET IS TO THE EAST RIGHT NOW



The Moon and planets have been enlarged slightly for clarity. On mobile devices, tap to steer the map by pointing your device at the sky. Who's Closest Right Now? Play with our timeline to see the swings in the planets' distances from Earth. Moon Phase and Position. Find the Moon's illumination, distance, and latitude for any time on



Now a look at Moon and planet pair-ups for October. On the 13th and 14th after dark, look for the nearly full Moon with Saturn toward the southeast. Then on the evening of October 20th, the Moon rises near Jupiter, with the giant planet looking extremely bright. You should be able to find them low in the east after around 10 pm that night.



The Moon and planets have been enlarged slightly for clarity. On mobile devices, tap to steer the map by pointing your device at the sky. Who's Closest Right Now? Play with our timeline to see the swings in the planets' distances from Earth. Moon Phase and Position. Find the Moon's illumination, distance, and latitude for any time on

WHAT PLANET IS TO THE EAST RIGHT NOW



The Moon and planets have been enlarged slightly for clarity. On mobile devices, Who's Closest Right Now? Play with our timeline to see the swings in the planets' distances from Earth. Moon Phase and Position. Find the Moon's illumination, distance, and ???



Planet Rise Set Meridian Comment; Mercury: Sun 8:43 am: Sun 6:57 pm: Sun 1:50 pm: Difficult to see: Venus: Sun 10:40 am: Sun 8:04 pm: Sun 3:23 pm: Good visibility: Mars: Sun 11:37 pm: Who's Closest Right Now? Play with our timeline to see the swings in the planets' distances from Earth. Moon Phase and Position. Find the Moon's



Discover celestial objects visible tonight from your current location. Our guide automatically shows planets, stars, nebulae, and spacecraft flyovers you can see right now. Explore the night sky ???

WHAT PLANET IS TO THE EAST RIGHT NOW



Planets Visible Tonight ??? November 2024. The month of November lets us see all of the planets except Mercury, which is too close to the sun for us to spy. Venus, Jupiter and Saturn are all evening planets, along with the ice worlds of Uranus and Neptune. Mars begins the month firmly as a morning planet but moves to allow decent late evening viewing as December comes into ???