

Which planet is closest to Earth?

Interestingly, while Venus moves closer to Earth than any other planet, the average distance between Earth and Venus is actually larger than the average distance between Earth and Mercury. Therefore, the title for closest planet to us goes to both Mercury and Venus, depending on where the planets are in their respective orbits.

Which planet is closest to the Sun?

Mercury is the closest planet to the Sun, orbiting at an average distance of 36 million miles (58 million kilometers). Mercury is 57 million miles closer to the Sun than Earth. Pluto is the largest dwarf planet in our solar system, just slightly larger than Eris, at number two.

Is Venus the closest planet to Earth?

But as an article in Physics Today points out, over half the time Venus is not the nearest planet; Mercury is. In fact, the scientists behind the article crunched the numbers and found that on average, Mercury is the closest planet not only to Earth but to every other planet in the solar system as well. Trippy.

Is Mercury closer to Earth than Venus?

Most of the time, Mercury is a little bit closer to Earth than Venus. What Is The Closest Planet To Earth? The closest planet to Earth varies between Mercury and Venus, yet Venus has the closest approach to Earth at 24-million miles (38-million kilometres).

What is the closest planet to Earth in 2024?

For example, when this article was written (January 2024), the closest planet to Earth was Mercury. But in around eight months, Venus will be the closest planet to us, and in another two months or so, Mars will have surpassed Venus as our closest neighbor. However, less than a month later Venus will have wrestled back the title.

Which planets are compared to Earth?

For this question, the answer can be either Mercury, Venus or Mars, depending on where each planet is on its orbital path compared to Earth.

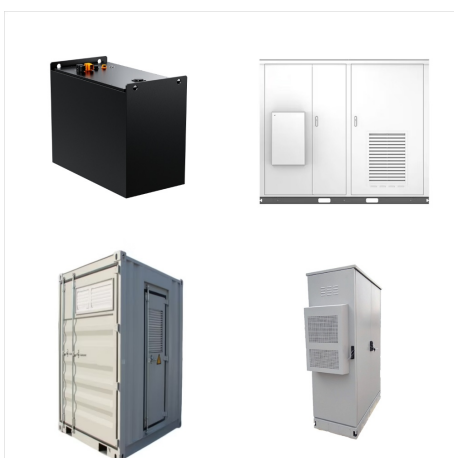
WHAT PLANETS ARE CLOSEST TO THE EARTH



Our solar system is made up of a star???the Sun???eight planets, 146 moons, a bunch of comets, asteroids and space rocks, ice, and several dwarf planets, such as Pluto. The eight planets are Mercury, Venus, Earth, Mars, Jupiter, Saturn, Uranus, and Neptune. Mercury is closest to the Sun. Neptune is the farthest.



There's a range of around 223 million kilometers between Venus' farthest and closest points from the Earth. Although Venus comes the closest, Mercury stays closer to Earth for a lot longer than the previously mentioned planet. Mercury only gets within around 77 million kilometers when at its closest to Earth, however, it stays closest for a



A majority are significantly larger than Earth, but a few have similar masses, including planets around YZ Ceti, A?a?uca, and Proxima Centauri which may be less massive than Earth. Several confirmed exoplanets are hypothesized to be potentially habitable, with Proxima Centauri b and GJ 1002 b (15.8 ly) considered among the most likely

WHAT PLANETS ARE CLOSEST TO THE EARTH



In such cases, Mercury may become the closest planet, with distances ranging from 82 to 217 million kilometers. Mercury is the nearest planet to Earth in this position. Its distance is shortened to 82 million kilometers. As can be observed, the situation is not entirely clear-cut to assert with confidence that Venus is the closest planet to Earth.



The answer to this particular question is straightforward ??? Venus. At its closest proximity to Earth, the hellish planet is only around 24 million miles (38 million kilometers) away from our

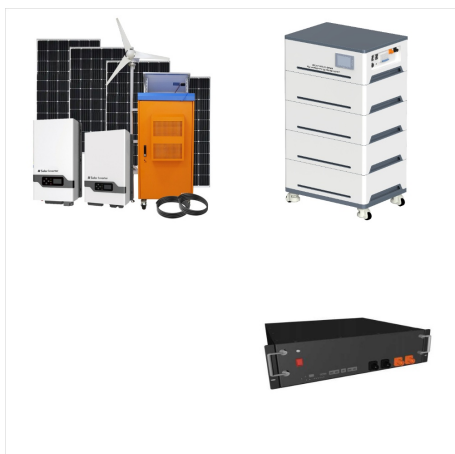


The closest planet to the Earth should be either the previous planet (Venus), or the following (Mars) Look up the mean radii of these planets orbits To find the average distance between Earth & Mars and Earth & Venus, subtract the smaller radius from the bigger one for each pair

WHAT PLANETS ARE CLOSEST TO THE EARTH



Mercury, the closest planet to the Sun, is a diminutive, rocky world that orbits the Sun at an average distance of roughly 36 million miles (57.9 million kilometers). Super-Earths: Rocky



Or you could order the planets by weight (mass). Then, the list from most massive to least massive would be: Jupiter (1.8986×10^{27} kilograms), Saturn (5.6846×10^{26} kg), Neptune (10.243×10^{25} kg), Uranus (8.6810×10^{25} kg)



Obviously, our own sun is the closest star, but in night time astronomy, we're usually interested in the nearest star to Earth other than the sun. The nearest star to planet Earth is Proxima Centauri of the Alpha Centauri system. The two key measures of stellar distances are light years and parsecs. Astronomers normally use parsec, while the public-at-large typically ???

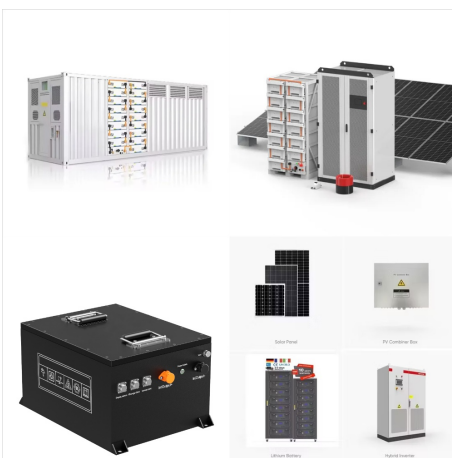
WHAT PLANETS ARE CLOSEST TO THE EARTH



? The moon will reach perigee ??? its closest point in its elliptical orbit around Earth ??? at 11 UTC (5 a.m. CST) on November 14, 2024, when it's 223,761 miles (360,109 km) away. And tomorrow is



Jupiter is the largest planet in the solar system. It's about 11 times wider than Earth with an equatorial diameter of 88,846 miles (about 142,984 kilometers). Jupiter is the fifth planet from the Sun, orbiting at an average ???



Sometimes, Mars is the closest planet to Earth. The closest that Mars comes to Earth in its orbit is 33.9 million miles away from it. In order to get an answer that is not subject to change, we must look at what planet is closest to the Earth on average. When we calculate this, we find that Mercury actually spends the most time close to the Earth.

WHAT PLANETS ARE CLOSEST TO THE EARTH



The closest planet to Earth means the planet that is at the closest distance from the Earth. Many scientists believe that the closest planet to Earth is Venus. Students can learn more about the closest planet to Earth here. Learn. CBSE. Class 5 to 12. Physics. Difference Between in Physics; Maths; Chemistry; Biology.

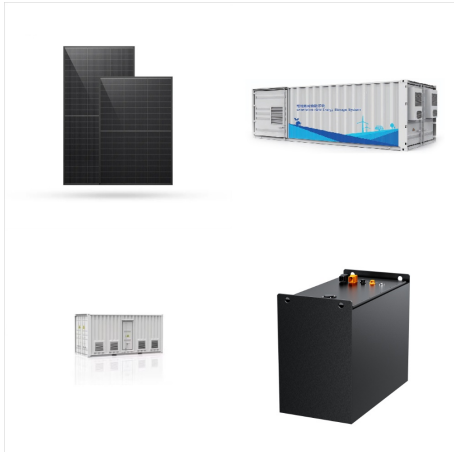


Solar system planets: Order of the 8 (or 9) planets. Facts about our solar system's planets. The order of the planets in the solar system, starting nearest the sun and working outward is the following: Mercury, Venus, Earth, Mars, Jupiter, Saturn, Uranus, Neptune and then the possible Planet Nine.



During their orbits, Earth and Mars can get as close as about 55 million kilometers. Just for comparison, Mars only gets within 490 million km of Jupiter at its closest. So Mars is always closer to Earth, and the rest of the inner planets, than it is to Jupiter.

WHAT PLANETS ARE CLOSEST TO THE EARTH



Moon???Saturn Close Approach. The Moon will be close to Saturn in the evening sky around November 10???11. Show Saturn on our Night Sky Map (below). Play with our timeline to see the swings in the planets" distances from Earth. Moon ???



Asking which planet is the closest to Earth is actually something of a trick question ??? the closest planet to Earth can change depending on the day, month, or even year. Rather than stating a time frame to describe when a given planet will be closest to our own planet, it is actually most accurate to describe a position that would indicate



If we look at the average distance between the orbits of two planets, then Venus is the closest planet to Earth, with an average distance of about 108 million km. Mars is the second closest, with

WHAT PLANETS ARE CLOSEST TO THE EARTH



An illustration of the solar system. Credit: NASA.
Quick: Which planet is closest to Earth? Ask an astronomer or a search engine, and you'll probably hear that though the situation changes frequently, Venus is the closest when averaged over time. Several educational websites, such as The Planets and Space Dictionary, publish the distance between each pair of planets, ???



Although Venus is the planet that comes closest to Earth as it sweeps by on its orbit, Mercury stays the closest to Earth the longest, according to a commentary published Tuesday (March 12) in the



So be aware that just because the app may occasionally show a planet and a dwarf planet to be very close to each other in the plan view, they may, in fact, be separated by a large perpendicular distance. Earth's Tilt. The positions of ???

WHAT PLANETS ARE CLOSEST TO THE EARTH



Four planets orbit the star: Tau Ceti g, Tau Ceti h, Tau Ceti e, and Tau Ceti f. Tau Ceti f, about four times the size of Earth, perhaps also a rocky planet, may be right on the edge of the habitable zone, according to NASA. [Pictured: Kepler-11.]

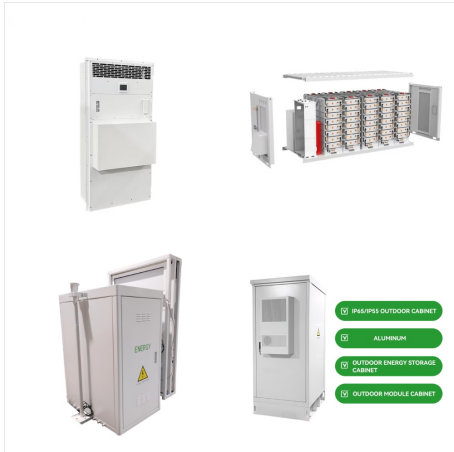


The elliptical orbit causes Mercury to get as close to the sun as 29-million miles and as far as 43-million miles. To put this into scale, Mercury is on average 0.387 AU from the sun. This means that Mercury is approximately a third of the way between the sun and Earth. Venus is the second planet from the sun and the closest planet to Earth



The Earth is 93 million miles from the sun. The nearest planet to Earth is Venus, which orbits at a distance of 67 million miles and sometimes passes within 26 million miles of Earth. Venus is extremely hot because of its carbon-dioxide rich atmosphere and has been ruled out as a candidate for life.

WHAT PLANETS ARE CLOSEST TO THE EARTH



Advertisement. Venus is the closest planet to Earth under most circumstances. Venus orbits the sun at a distance of about 67 million miles, while the Earth orbits at about 93 million miles. From basic geometry, then, when ???