

What are the different types of trolling motor batteries?

There are generally three main types of trolling motor batteries: lead-acid batteries, AGM batteries, and lithium-ion (LiFePO<sub>4</sub>) batteries. Below, we will delve into the specific advantages and limitations of each type. The most prevalent type of battery utilized for trolling motors is the lead-acid wet cell battery.

How to choose a lithium trolling motor battery?

But you'll still need to figure out the ideal size of your battery. When shopping for lithium trolling motor batteries, you'll need to consider amperage and voltage. The larger the motor, the higher capacity you'll need in its battery. For optimal performance, look at your manual or speak to the manufacturer for guidance.

How many batteries does a trolling motor need?

More batteries of the same size mean more capacity and more range available. As a rule of thumb, trolling motors with 55 lbs of thrust or less operate on 12 volts (single battery), those with 68-100 lbs of thrust run on 24 volts (two batteries), and those above 100 lbs of thrust require 36 volts in total (three batteries).

What are the benefits of lithium trolling motor batteries?

Another benefit of the reduced weight is the ability to draft in shallower water, potentially into back-water areas with lower fishing pressure. Another notable advantage of lithium trolling motor batteries includes longer run times without battery voltage drop and the potential for quicker charging cycles.

How much do trolling motor batteries cost?

You can find small, inexpensive trolling motor batteries decent for small boats, like kayaks or canoes, that cost less than \$25. On the other hand, many larger, more powerful trolling motor batteries can cost well over \$500 and even over \$600.

How do I choose a deep cycle battery for my trolling motor?

We suggest selecting a 12-volt deep cycle marine battery with at least 110 amp hour rating. Usually Group 27 size or larger. The higher the amp-hour rating, the more run time your trolling motor will receive. If an amp hour rating is not available, select a deep cycle battery with a minimum of 180 minutes reserve capacity.

# WHAT SIZE LITHIUM BATTERY FOR TROLLING MOTOR



Selecting the appropriate size lithium battery for your trolling motor is crucial for optimizing your boating experience. This guide will walk you through the key considerations and steps to ensure you make an informed decision. Table Content of this article: Understand Your Trolling Motor's Voltage System Battery Voltage Requirements Battery



How to Charge a Trolling Motor Battery: Tips and Tricks; How to Charge a Trolling Motor Battery from the Outboard Motor (part 2)? Guides. What is a Trolling Motor; Bow Mount vs Transom Mount; Trolling Motor Top Speed: Tips and Tricks from Experts; 12v vs 24v Trolling Motor; How to Wire a 24-volt Trolling Motor; What Size Trolling Motor Do I Need



Example Calculation: Suppose you have a 24V trolling motor with a 30 amp draw and you plan to use it for 4 hours: Amp Hours Needed: 30 amps x 4 hours = 120Ah. With Buffer: 120Ah x 1.2 (buffer) = 144Ah. Thus, a 150Ah battery would be ideal.

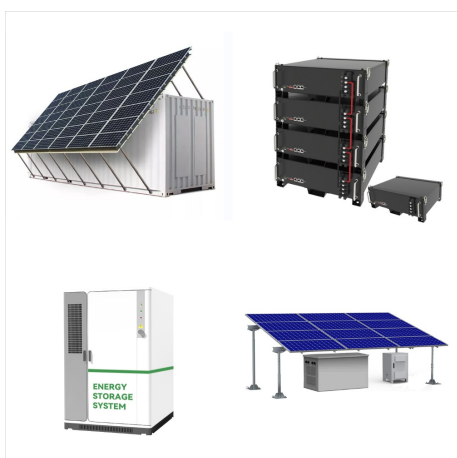
# WHAT SIZE LITHIUM BATTERY FOR TROLLING MOTOR



QUEST series trolling motors will operate with any deep cycle marine 12, 24, or 36-volt battery/batteries and have been optimized for use with LiFePO4 Lithium Ion battery cells. Lithium Ion batteries maintain higher voltages for more extended periods than lead-acid batteries and will provide the best performance in powering the trolling motor.



2.5 Is a 12V 20Ah Lithium Battery Good for a Trolling Motor? A 12V 20Ah lithium battery can work for a trolling motor, but it's essential to evaluate your specific power requirements to ensure it meets your motor's demands. 1. Runtime. A 12V 20Ah battery offers a total capacity of 240 watt-hours (Wh) ( $12V * 20Ah$ ).



Determining Battery Size. Selecting the appropriate battery size depends on several factors: a. Motor Thrust. The thrust rating of your trolling motor plays a significant role in determining the battery size. Higher thrust motors require more power, necessitating larger battery capacity. b. Usage Duration

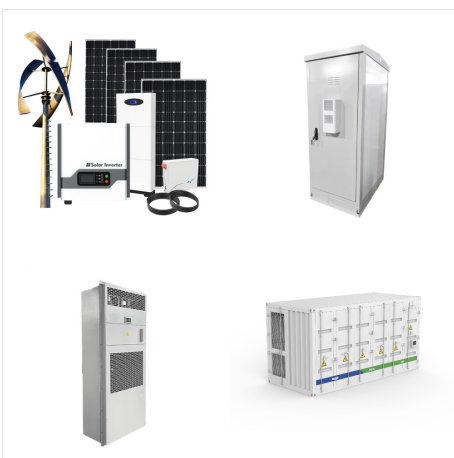
# WHAT SIZE LITHIUM BATTERY FOR TROLLING MOTOR



The US Battery Supply Trolling Motor Size Guide will help you decide, "what type of battery do I need to run my trolling motor?" Most electric trolling motor will operate with any deep cycle 12-volt marine battery. But for the longest run time and lifespan we recommend lithium iron phosphate (LiFePO<sub>4</sub>) batteries. Here's 5 reasons why:



Determining the appropriate battery size for a trolling motor involves measuring the motor's thrust and the boat's weight. Most boats under 2,500lbs will have a trolling motor with 30lb - 55lb thrust. This makes the lithium battery the best possible choice for the kayak fisherman. If they can be afforded, then lithium is the type of



If your trolling motor takes a constant 10Ah, a 100Ah battery will last for almost ten hours. If the current draw of your trolling motor varies from 1Ah to 20 Ah, then it may last longer. Do lithium trolling motor batteries last longer? Without a doubt, lithium batteries will last far longer than the same capacity lead-acid battery.



# WHAT SIZE LITHIUM BATTERY FOR TROLLING MOTOR



Different Types of Lithium Batteries Suitable for Trolling Motors LiFePO4 Batteries. LiFePO4 batteries, also known as Lithium Iron Phosphate batteries, are a popular choice for trolling motors. They are known for their long lifespan and stability.. What makes them stand out is their ability to handle high temperatures, making them very safe. Imagine using your trolling ???



Ideal for small boats and kayaks, the 12V lithium battery offers several benefits: Compact and Portable: Easy to handle and install. Perfect for Short Trips: Provides sufficient power for casual outings. Cost-Effective: Lower capacity means a more affordable entry point into lithium technology. Part 6. 24V lithium trolling motor battery



Learn how to select the best trolling motor batteries for your boat from three common types: flooded lead-acid, AGM, and lithium iron phosphate. Find out the advantages, disadvantages, and compatibility of each battery ???

# WHAT SIZE LITHIUM BATTERY FOR TROLLING MOTOR



Under the category of deep cycle trolling motor battery (or so-called trolling motor marine battery), you still have two options: the lithium batteries or lead acid batteries. The lithium trolling motor battery has the lightest weight, the longest run time and lifespan, and therefore will be replaced less often.



The size of your trolling motor battery will depend on the amp draw of your trolling motor and the amount of time you plan to spend on the water. To calculate the minimum amp-hour rating needed for your battery, divide the amp draw by 10. What is the expected runtime of a 12V 100Ah lithium battery with a trolling motor?



Learn how lithium iron phosphate (LiFePO<sub>4</sub>) batteries can reduce weight, increase run time and lifespan for your trolling motor. Find out if your Minn Kota trolling motor and charger can work with lithium batteries and how to ???

# WHAT SIZE LITHIUM BATTERY FOR TROLLING MOTOR



Up to 5.6% cash back? Most electric trolling motor will operate with any deep cycle 12-volt marine battery. But for the longest run time and lifespan we recommend lithium iron phosphate ???



Dakota Lithium 36v 100ah Marine Battery is upgrade to 36V lithium marine trolling motor batteries which charge 5X faster than lead acid. 1/4 the weight and 11-year warranty. 15% Off ??? Code: SeasonEndSale ??? Exclusions Apply, Valid 10/28 ??? 11/30 Dakota Lithium 36V 100Ah Deep Cycle Marine Trolling Motor Battery Set quantity. Add to cart.



The result is their latest trolling motor lithium-ion battery offering, the LFP27-12100 LiFePO Li-Iron 12V 100AH Deep Cycle Battery. It is one of the most advanced and best lithium batteries for trolling motors that money can buy today. There are a few factors that will influence what size of the trolling motor battery is most suited to

# WHAT SIZE LITHIUM BATTERY FOR TROLLING MOTOR



There are many good LiFePO4 batteries but what qualifies this one from being my best Lithium battery for trolling motor is its compact size. The VEMDIA 12V 100Ah LiFePO4 weighs in at just 28.7 lbs, making it easy to carry and install on your boat. Considerations When Choosing the Best Battery for Trolling Motor 1. Size and Weight.



When picking a trolling motor battery, consider whether you're a "set it up and forget it" type of person or if you're comfortable with a bit of maintenance. will help you decide whether a low-maintenance option like a lithium battery or a more hands-on choice like a lead acid battery is right for you. Battery Size and Capacity



One of these trolling motor batteries, like our top choice, the Ionic Batteries 12V 1200Ah Lithium-Ion Battery, will be a solid match for your fishing activities, whether you need to power a 21



# WHAT SIZE LITHIUM BATTERY FOR TROLLING MOTOR



Best 24V Battery For Trolling Motor 24V Lithium Battery 60Ah Lifepo4 Trolling Motor Battery. 24V Lithium Battery 60Ah Lifepo4 Trolling Motor Battery. Shop now What we like. Lightweight. BMS does a great job to stop over-discharging. Can handle 70lb or 80lb. Size. Of course, you need to make sure it comes at a size that is relatively compact



Battery Size for Trolling Motor The most common battery group sizes for trolling motors are 24, 27, and 31. However, selecting the right size depends on factors such as your boat's dimensions, cargo weight, and the power requirements of the motor. the Power Queen 12V 100Ah LiFePO4 lithium trolling motor battery weighs only 22lbs. It also

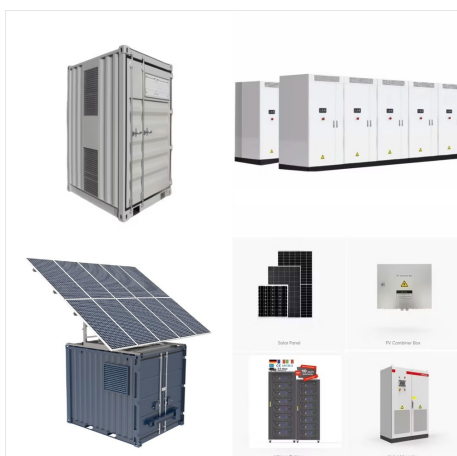


2.5 Is a 12v 20ah lithium good for a trolling motor? A 12V 20Ah lithium battery can be used for a trolling motor, but there are some considerations 1. The Runtime. A 12V 20Ah battery offers a total capacity of 240 watt-hours (Wh) (calculated as ???)

# WHAT SIZE LITHIUM BATTERY FOR TROLLING MOTOR



To summarize all the information about trolling motor battery, the right type you should look for is the 12v deep cycle batteries: If you are willing to invest extra bucks on this, the lithium trolling motor battery is your best choice with unbeatable performance at all rounds. Check out the ExpertPower 12V 100Ah Lithium Battery.



If you are running a 36V lithium trolling motor, and have a 12V starting battery, then the Power-Pole CHARGE is for you. This system will take the ~70 amps from your outboard alternator and feed it safely into your starter battery and into your Abyss LifePO4 trolling motor battery, simultaneously, and back and forth when needed.



Best lithium trolling motor battery: Dakota Lithium 36V 110Ah; Best deep cycle trolling motor battery: Relion RB24V100 Lithium Iron Phosphate Deep Cycle Battery, 24V, 100Ah; What size battery for a 30 thrust trolling motor? Depending on composition and make up, 12 volt batteries are rated to provide 30 pounds of thrust.

# WHAT SIZE LITHIUM BATTERY FOR TROLLING MOTOR



On the water, the right equipment can make all the difference, and that's especially true when it comes to powering your trolling motor. With the marine industry evolving rapidly, trolling motor lithium batteries have become a game-changer for everyone who loves boating. These powerhouses are changing how we use marine energy by being more efficient and ???



The best trolling motor battery is Dakota Lithium. Best marine & deep cycle lithium battery for 12V 24V 36V trolling motors. Minnkota, garmin. 15% Off ??? Code: SeasonEndSale ??? Exclusions Apply, Valid 10/28 ??? 11/30 high output chargers will cut the charge time to 2-4 hours depending on battery size and are a good choice for tournament



Buy DC HOUSE 12V 100AH LiFePO4 Lithium Battery, Group 31 100AH Marine Battery with 100A BMS, Up to 15000 Deep Cycles Battery for RV, Solar, Trolling Motor, Travel Trailer, Energy Storage- Off Grid: Batteries - Amazon FREE DELIVERY possible on eligible purchases

# WHAT SIZE LITHIUM BATTERY FOR TROLLING MOTOR



Choosing the right size lithium battery for your trolling motor depends on several factors, including the motor's power requirements, the size of your boat, and how long you plan to be on the water. For most applications, a 12V 50Ah or 12V 100Ah lithium battery is recommended for optimal performance and runtime. Factors to Consider When Selecting a Lithium