

How close is Mars to Earth?

Mars Nearing Earth In 2003, the Hubble Space Telescope snapped this photo of the red planet 11 hours before its closest approach to Earth in 60,000 years. How close? It was a mere 34,648,840 miles (55,760,220 kilometers) away. The n...Read More --- The rusty world is full of mysteries--and some of the solar system's most extreme geology.

Is Mars a wet planet?

Mars is one of the most explored bodies in our solar system, and it's the only planet where we've sent rovers to roam the alien landscape. NASA missions have found lots of evidence that Mars was much wetter and warmer, with a thicker atmosphere, billions of years ago.

Is Mars a desert planet?

Mars is less dense than Earth, having about 15% of Earth's volume and 11% of Earth's mass, resulting in about 38% of Earth's surface gravity. Mars is the only presently known example of a desert planet, a rocky planet with a surface akin to that of Earth's hot deserts.

What is the surface of Mars like from Earth?

The surface of Mars as seen from Earth is divided into two kinds of areas, with differing albedo. The paler plains covered with dust and sand rich in reddish iron oxides were once thought of as Martian "continents" and given names like Arabia Terra (land of Arabia) or Amazonis Planitia (Amazonian plain).

Why is Mars a dynamic planet?

Mars is also a dynamic planet with seasons, polar ice caps, canyons, extinct volcanoes, and evidence that it was even more active in the past. Mars is one of the most explored bodies in our solar system, and it's the only planet where we've sent rovers to roam the alien landscape.

Does Mars have a volcano?

Mars hosts many enormous extinct volcanoes (the tallest is Olympus Mons, 21.9 km or 13.6 mi tall) and one of the largest canyons in the Solar System (Valles Marineris, 4,000 km or 2,500 mi long). Geologically, the planet

WHERE IS THE PLANET MARS LOCATED IN THE SOLAR SYSTEM



is fairly active with marsquakes trembling underneath the ground,dust devils sweeping across the landscape,and cirrus clouds.



How Many Moons Are in Our Solar System?
Naturally-formed bodies that orbit planets are called moons, or planetary satellites. The best-known planetary satellite is, of course, Earth's Moon. Since it was named before we learned about other planetary satellites, it is called simply "Moon."
According to the NASA/JPL Solar System Dynamics team, the current tally [???



Mars: The solar system's Red Planet. Mosaic of the Valles Marineris hemisphere of Mars. The image was created from 102 Viking Orbiter images of Mars. "Observational constraints on the orbit



Dwarf planet Ceres is closer to home. Ceres is the largest object in the asteroid belt between Mars and Jupiter, and it's the only dwarf planet located in the inner solar system. Like Pluto, Ceres also was once classified as a planet. Ceres was the first dwarf planet to be visited by a spacecraft ??? NASA's Dawn mission.

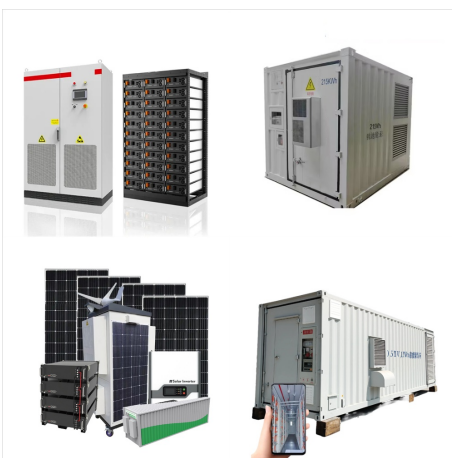
WHERE IS THE PLANET MARS LOCATED IN THE SOLAR SYSTEM



Introduction Dwarf planet Ceres is the largest object in the asteroid belt between Mars and Jupiter, and it's the only dwarf planet located in the inner solar system. It was the first member of the asteroid belt to be discovered when Giuseppe Piazzi spotted it in 1801. When NASA's Dawn arrived in 2015, Ceres became [???



The fourth planet from the Sun, Mars is one of Earth's two closest planetary neighbors (Venus is the other). Mars is one of the easiest planets to spot in the night sky ??? it looks like a bright red point of light. When the solar system settled into its current layout about 4.5 billion years ago, Mars formed when gravity pulled swirling



Solar System Formation. The solar system is located in one of the spiral arms of the Milky Way galaxy. It was born about 4.5 billion years ago when a cloud of interstellar gas and dust collapsed. The process of accretion does not inevitably lead to planets. Between Mars and Jupiter, there is the asteroid belt. An asteroid is a small rocky

WHERE IS THE PLANET MARS LOCATED IN THE SOLAR SYSTEM



This planet has a long orbital duration, 84 years. A day on Uranus, on the other hand, is the shortest, lasting only 17 hours. Currently, 27 moons have been confirmed to orbit around Uranus. The diameter has been estimated at 51.118 km / 31.763 mi. It is the third-largest planet in the Solar System. Neptune. The farthest planet, Neptune. It



The solar system is the Sun and all the objects that are bound to the Sun by gravity. The solar system has eight planets: Mercury, Venus, Earth, Mars, Jupiter, Saturn, Uranus, and Neptune. Ceres, Makemake, Pluto and Eris are dwarf planets.



When the solar system settled into its current layout about 4.5 billion years ago, Mars formed when gravity pulled swirling gas and dust in to become the fourth planet from the Sun. Mars is about half the size of Earth, and like its fellow terrestrial planets, it has a central core, a rocky mantle, and a solid crust.

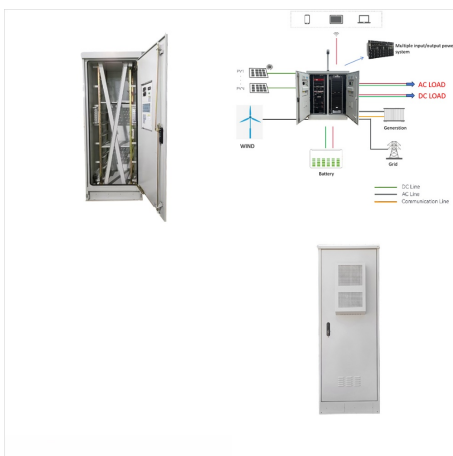
WHERE IS THE PLANET MARS LOCATED IN THE SOLAR SYSTEM



Mars is the fourth planet in our solar system. It is located at an average distance of 142 million miles (228 million kilometers) from our star. Sadly, this means the red planet is too far away from the goldilocks zone which means that life was not able to flourish like it did on Earth.



The order and arrangement of the planets and other bodies in our solar system is due to the way the solar system formed. Nearest to the Sun, only rocky material could withstand the heat when the solar system was young. For this reason, the first four planets ??? Mercury, Venus, Earth, and Mars ??? are terrestrial planets.



Mars is about half the diameter of Earth. As it is smaller in both size and mass the gravity on Mars is about 40% of that on Earth. Mars has a thin atmosphere mainly made of carbon dioxide (95%), argon (2%) and nitrogen (2%).. Mars has huge ???

WHERE IS THE PLANET MARS LOCATED IN THE SOLAR SYSTEM



In this solar system map you can see the planetary positions from 3000 BCE to 3000 CE, and also see when each planet is in retrograde. We use cookies. Solar System Planets 2024 . Mars and its Moons LIVE. New Horizons at Pluto REPLAY. Halley's Comet LIVE. Solar System Maps. New Horizons Flight Path. Rosetta Spacecraft Flight Path.



Mars is the fourth planet from the Sun. The surface of Mars is orange-red because it is covered in iron(III) oxide dust, giving it the nickname "the Red Planet". [22] [23] Mars is among the brightest objects in Earth's sky, and its high-contrast albedo features have made it a common subject for telescope viewing. It is classified as a terrestrial planet and is the second smallest of the Solar



Ceres Facts (Dwarf Planet) Located in the asteroid belt between the orbits of Mars and Jupiter, Ceres is the closest dwarf planet to the Sun and the only one located in the inner solar system 's the smallest of the known dwarf planets at 950 km (590 mi) in diameter.

WHERE IS THE PLANET MARS LOCATED IN THE SOLAR SYSTEM



Mars is the fourth planet of our solar system, sitting 154.8 million miles from the sun and, at its closest, is 33.9 million miles from Earth. Once the rover reached a suitable "airfield" location, it released Ingenuity to the surface so it could perform a series of test flights over a 30-Martian-day experimental window.



Overview
Geography and features
Natural history
Physical characteristics
Atmosphere
Hydrology
Orbital motion
Moons



This makes Mars one of the most popular and talked about planets in the solar system. It takes Mars 687 Earth days to orbit the Sun with its orbit radius of 227,840,000 km. Such a deep, extensive valley system, located in the southern hemisphere, could not be present unless the crust there is significantly thicker than the Earth's.

WHERE IS THE PLANET MARS LOCATED IN THE SOLAR SYSTEM



Mars is home to the tallest volcano in the solar system, a behemoth called Olympus Mons. Standing at 72,000 feet (22,000 metres) tall, it is two and a half times the size of Mount Everest . Olympus Mons is 674 miles (324 kilometres) in diameter, making it roughly the same diameter as the state of Arizona.

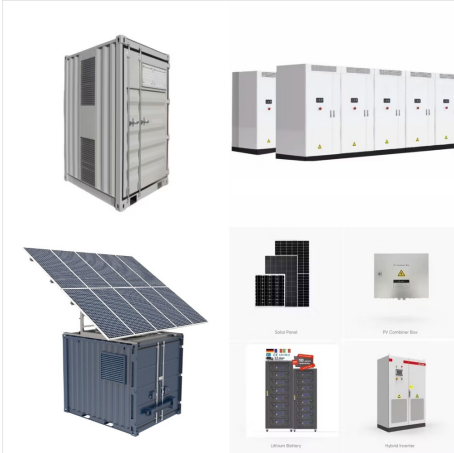


Mars is the fourth planet from the Sun and the second-smallest planet in the Solar System, nicknamed The Red Planet.. Mars is a terrestrial planet with caps of water and carbon dioxide. [5] [6] It has the largest volcano in the Solar System, and some very large impact craters.[5]Mars is named after the mythological Roman god of war because it appears of red color.



It is the outermost of the solar system's small inner planets. The surface is rocky and dusty???the reddish color comes from particles of rust (iron oxide) in the dust. Compare the sizes and order of the planets. Billions of years ago, Mars may have had rivers, lakes, and possibly a large ocean.

WHERE IS THE PLANET MARS LOCATED IN THE SOLAR SYSTEM



? Solar system - Planets, Moons, Orbits: The eight planets can be divided into two distinct categories on the basis of their densities (mass per unit volume). The four inner, or terrestrial, planets???Mercury, Venus, Earth, and Mars???have rocky compositions and densities greater than 3 grams per cubic cm. (Water has a density of 1 gram per cubic cm.) In contrast, ???



It is the outermost of the solar system's small inner planets. The surface is rocky and dusty???the reddish color comes from particles of rust (iron oxide) in the dust. Compare the sizes and order of the planets. Billions of years ago, Mars may ???



Transcript (English) - [Narrator] Our solar system is one of over 500 known solar systems in the entire Milky Way galaxy. The solar system came into being about 4.5 billion years ago when a cloud of interstellar gas and dust collapsed, resulting in a solar nebula, a swirling disc of material that collided to form the solar system.

WHERE IS THE PLANET MARS LOCATED IN THE SOLAR SYSTEM



The Nine Planets is an encyclopedic overview with facts and information about mythology and current scientific knowledge of the planets, moons, and other objects in our solar system and beyond. The 9 Planets in Our Solar System



The main asteroid belt between Mars and Jupiter also divides our solar system into the inner and outer solar system. Here's a bit about each of the eight planets, in order of their distance from the sun. Terrestrial Planets. The inner solar system consists of four rocky planets: Mercury, Venus, Earth and Mars, located closest to the Sun.



NASA's Mars Reconnaissance Orbiter found the first definitive detections of carbon-dioxide snow clouds, making Mars the only body in the solar system known to host such unusual winter weather. The