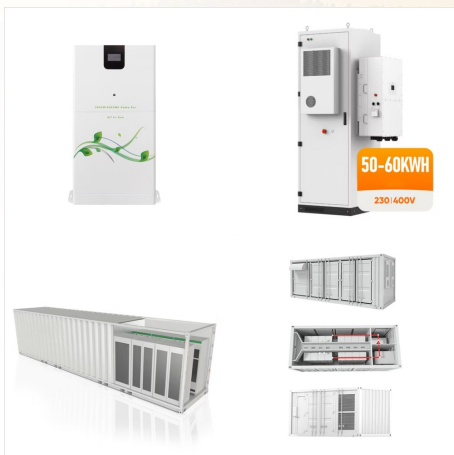




Where renewable sources are those that are recyclable, clean energy are those that do not release pollutants like carbon dioxide, and green energy is that which comes from natural sources. While there is often cross-over between these energy types, not all types of renewable energy are actually fully clean or green.



Renewable Supply and Demand. Renewable energy is the fastest-growing energy source globally and in the United States. Globally: About 11.2 percent of the energy consumed globally for heating, power, and transportation came from modern renewables in 2019 (i.e., biomass, geothermal, solar, hydro, wind, and biofuels), up from 8.7 percent a decade prior (see figure ???



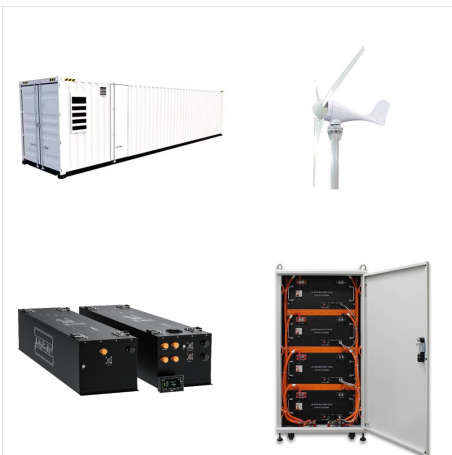
To reduce CO<sub>2</sub> emissions and local air pollution, the world needs to rapidly shift towards low-carbon sources of energy ??? nuclear and renewable technologies. Renewable energy will play a key role in decarbonizing our energy systems in the coming decades. But how rapidly is our production of renewable energy changing?

# WHICH IS NOT A TYPE OF RENEWABLE ENERGY

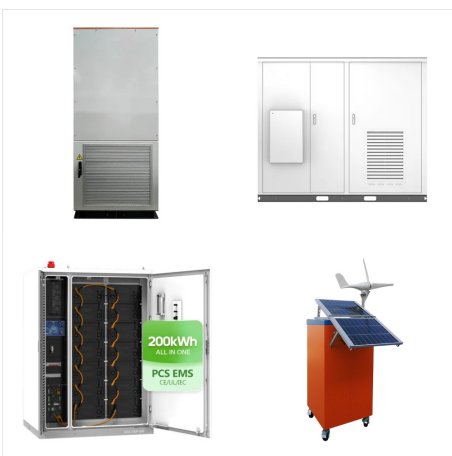


Non-renewable energy resources cannot be replaced ??? once they are used up, they will not be restored (or not for millions of years).

Non-renewable energy resources include fossil fuels and nuclear power.. Fossil fuels. Fossil fuels (coal, oil and natural gas) were formed from animals and plants that lived hundreds of millions of years ago (before the time of the dinosaurs).



The global trend: Sustainable Development Goal (SDG) 7.2 posits a substantial increase in the share of renewable energy in total final energy consumption (TFEC). Meeting this target will require the penetration of renewable energy to accelerate in all three end uses???electricity, heat, and transport. In 2017, the share of renewable energy in



Types of Renewable Energy Sources Hydropower: For centuries, people have harnessed the energy of river currents, using dams to control water flow. Hydropower is the world's biggest source of renewable energy by far, with China, Brazil, Canada, the U.S., and Russia being the leading hydropower producers. While hydropower is theoretically a clean

# WHICH IS NOT A TYPE OF RENEWABLE ENERGY



What Is Renewable Energy? Renewable energy is energy that has been derived from earth's natural resources that are not finite or exhaustible, such as wind and sunlight. Renewable energy is an alternative to the traditional energy that relies on fossil fuels, and it tends to be much less harmful to the environment. 7 Types of Renewable Energy



In addition, a ground-breaking study by the US Department of Energy's National Renewable Energy Laboratory (NREL) explored the feasibility of generating 80 percent of the country's electricity from renewable sources by 2050. They found that renewable energy could help reduce the electricity sector's emissions by approximately 81 percent .

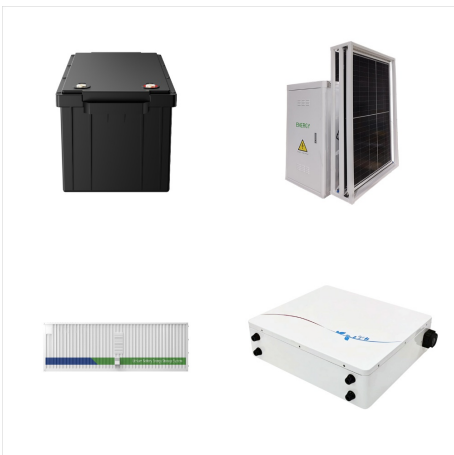


Renewable energy comes from sources that will not be used up in our lifetimes, such as the sun and wind. Algal fuel is a type of biomass energy that uses the unique chemicals in seaweed to create a clean and renewable biofuel. Algal fuel does not need the acres of cropland that other biofuel feedstocks do.

# WHICH IS NOT A TYPE OF RENEWABLE ENERGY



Types of renewable energy Even though nuclear power is considered a clean energy due to its low-to zero-carbon emissions, it's not renewable. Nuclear energy requires uranium, which needs to be mined from the ground and exists only in ???



Renewables on the rise For the 760 million people in the world who lack access to electricity, the introduction of modern clean energy solutions can enable vital services such as improved healthcare, better education, and internet access, thus creating new jobs, improving livelihoods, and reducing poverty. Driven by the global energy crisis and policy momentum, renewable ???



Each type of renewable energy contributes different amounts to our electricity mix, alongside non-renewable energy types such as fossil fuels or nuclear energy. Find out about the different types of renewable energy sources that we currently use for electricity and how they'll be used in the future to help further tackle climate change.

# WHICH IS NOT A TYPE OF RENEWABLE ENERGY



Energy from Biomass. Principal Energy Uses: Transportation, Electricity, Heat Form of Energy: Chemical. Biomass is a semi-renewable energy resource that comes from plants and animals. We categorize this resource as semi-renewable because it has to be carefully managed to ensure we are not using it faster than it can be replenished.



Renewable energy is cheaper. Renewable energy actually is the cheapest power option in most parts of the world today. Prices for renewable energy technologies are dropping rapidly. The cost of



The United States uses a mix of energy sources. The United States uses and produces many different types and sources of energy, which can be grouped into general categories such as primary, secondary, renewable, or fossil fuels.. Primary energy sources include fossil fuels (petroleum, natural gas, and coal), nuclear energy, and renewable sources ???



# WHICH IS NOT A TYPE OF RENEWABLE ENERGY



Energy sources are renewable or nonrenewable. There are many different sources of energy but they are all either renewable or nonrenewable energy sources.. Renewable and nonrenewable energy sources can be used as primary energy sources to produce useful energy such as heat, or they can be used to produce secondary energy sources such as electricity and hydrogen.



Renewable energy is cheaper. Renewable energy actually is the cheapest power option in most parts of the world today. Prices for renewable energy technologies are dropping rapidly. The cost of

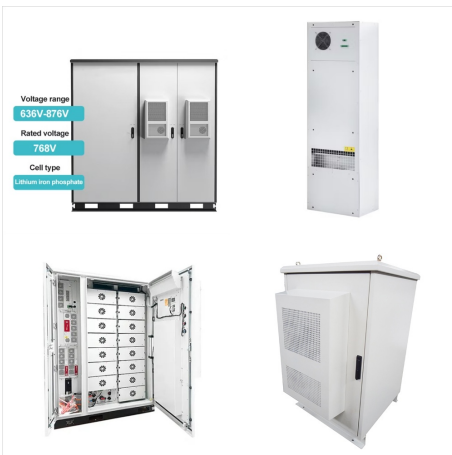


Explore the five different types of renewable energy and how each one plays a key role in a more sustainable future for the planet. Conversely, even renewable energy is not always the most "green" and can have negative impacts on the environment, said Majidzadeh. Solar and wind power, for example, can help reduce emissions and lower

# WHICH IS NOT A TYPE OF RENEWABLE ENERGY



Energy production ??? mainly the burning of fossil fuels ??? accounts for around three-quarters of global greenhouse gas emissions. Not only is energy production the largest driver of climate change, but the burning of fossil fuels and biomass also comes at a large cost to human health: at least five million deaths are attributed to air pollution each year.



Biofuel is a renewable energy source that is derived from plant, algal, or animal biomass. Biofuel is advocated as a cost-effective and environmentally benign alternative to petroleum and other fossil fuels. Learn more about the types and manufacture of biofuels as well as their economic and environmental considerations.



Wind is a plentiful source of clean energy. especially here in the UK. Wind farms are an increasingly familiar sight in the UK with wind power making an ever-increasing contribution to the National Grid, it now powers around 29.4% of the UK supply!. There are two main types of wind turbines available, offshore and onshore.

# WHICH IS NOT A TYPE OF RENEWABLE ENERGY



The most widely used renewable energy types are solar energy, wind power, and hydropower. Bioenergy and geothermal power are also significant in some countries. Some also consider nuclear power a renewable power source, although this is controversial. Renewable energy installations can be large or small and are suited for both urban and rural



Hydropower is a type of renewable energy that uses the power of water flows to generate electricity. The energy that is generated by hydropower plants is clean, reliable, and sustainable, making it a relevant low-carbon alternative ???