

What are the disadvantages of solar energy?

So, let's have a close look at the 10 biggest disadvantages of solar energy. 1. Lack of Reliability Solar energy is far from being reliable compared to other energy sources like nuclear, fossil fuels, natural gas, etc. Since solar energy depends on sunlight, it can only produce energy in the daytime.

Why are solar panels so expensive?

Since solar energy depends on sunlight, it can only produce energy in the daytime. Solar panels can't produce energy at night so some systems can store energy ultimately making the system more expensive. Another method used by some solar panel systems is to use a backup from other non-renewable energy sources.

What are the advantages and disadvantages of sunlight?

Another huge advantage is that just a tiny fraction of the sunlight we get every day can provide a huge amount of energy. Indeed, the US Department of Energy argues that an hour and a half of sunlight that reaches the planet's surface generates enough power to meet all of humanity's energy consumption for an entire year. 3.

Are solar panels eco-friendly?

Solar panels can't produce energy at night so some systems can store energy ultimately making the system more expensive. Another method used by some solar panel systems is to use a backup from other non-renewable energy sources. These types of systems, however, cannot be considered as purely environment-friendly.

What are the advantages of solar energy?

Here are a few of the main advantages of solar. 1. Solar energy is renewable and sustainable. First and foremost, solar power is a type of renewable energy. Unlike finite fossil fuels such as coal, oil and natural gas, energy from the sun is virtually inexhaustible.

Is solar energy inefficient and unreliable?

# WHICH OF THE FOLLOWING IS A DISADVANTAGE OF SOLAR ENERGY



For a country that already uses too much water for farmers, it is nearly impossible to use that much amount of water to produce solar energy. Considering the above-mentioned disadvantages of solar energy, it is safe to say solar energy is inefficient and unreliable.

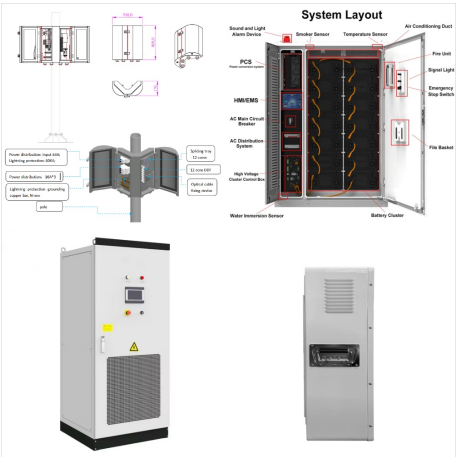


Solar energy is expensive and solar energy works during every season, however the productivity drops, hence option A is correct.. What is the use of solar energy? The fact that solar energy might be temporarily disrupted by weather is one of its drawbacks. The amount of electricity you create is less on cloudy days. However, the cold has little impact on output.



Study with Quizlet and memorize flashcards containing terms like Although hydropower has many advantages, there are some drawbacks to this source of energy. Which of the following is not true about hydropower? A. It increases downstream flooding and decreases recreational opportunities. B. It provides a domestic energy source. C. Hydroelectric plants have longer lives than nuclear ???

# WHICH OF THE FOLLOWING IS A DISADVANTAGE OF SOLAR ENERGY



What are the advantages of solar energy? When discussing the pros and cons of solar energy, it's hard to ignore the many benefits. Here are a few of the main advantages of solar. 1. Solar energy is renewable and sustainable. First and foremost, solar power is a type of renewable energy. Unlike finite fossil fuels such as coal, oil and natural



Disadvantages of Solar Energy. The disadvantages of solar energy are becoming fewer as the industry advances and grows, creating economies of scale. Technological advances are helping solar go mainstream. Here are how the ???



A The circumstances under which phase transitions occur would limit the versatility of latent heat as a storage method.; B The supply of substances that possess the properties that are needed in a medium for latent heat storage is dwindling.; C The properties that are needed in a medium for latent heat storage are found in substances that have other, undesirable properties.

# WHICH OF THE FOLLOWING IS A DISADVANTAGE OF SOLAR ENERGY



In general, the disadvantages of solar energy include high cost, low efficiency, space needed for installing solar panels, the unreliability of sun exposure, and high pollution from manufacturing solar panels.. Concentrated solar power plants are massively expensive to install with very low return on investment. They're also an eyesore and abandoned installations are ???



PYQs on Solar Energy. Question 1: With reference to technologies for solar power production, consider the following statements: (UPSC Prelims 2014) "Photovoltaics" is a technology that generates electricity by direct conversion of light into electricity, while "Solar Thermal" is a technology that utilizes the Sun's rays to generate heat which is further used in ???



Solar energy is used both directly and indirectly to make up the majority of commercial energy. \_\_\_\_  
170. Overall, nonrenewable resources have a lower net energy than renewable resources. Which of the following disadvantages of the development of geothermal power is false? a. Use of geothermal energy is limited by scarcity of sites and

# WHICH OF THE FOLLOWING IS A DISADVANTAGE OF SOLAR ENERGY



Study with Quizlet and memorize flashcards containing terms like Energy Reduction is the better starting point that which type of renewable energy to use?, which of the following are designed to reduce energy demand 1. viable pricing 2. tied rate system 3. energy efficient appliances, you are about to invest in a 66 inch flat screen TV. These TVs come in both energy star and non ???



Solar Power Pros & Cons. Solar power is a renewable source of energy that can be gathered practically anywhere in the world.. Solar power plants don't produce any air, water, or noise pollution and doesn't emit any greenhouse gases (6) Large-scale power plants can disturb local plant and wildlife due to their size, but compared to fossil fuels, still have a lower ???



It's hard to overstate the environmental advantages of solar energy and how crucial it is to both curbing and preparing for the effects of climate change. In terms of curbing climate change, solar is a renewable energy source with a fraction of the emissions of natural gas or coal.



# WHICH OF THE FOLLOWING IS A DISADVANTAGE OF SOLAR ENERGY



Energy that is produced by solar panels is clean, renewable and has zero-emissions. Solar energy does not contribute towards greenhouse gasses or fossil fuels unlike other oils and coals. Essentially this means that solar panels are environmentally friendly products and will not harm the planet.



Study with Quizlet and memorize flashcards containing terms like What is the most significant application of silicon in generating electricity from renewable energy sources?, Which is a disadvantage of generating electricity from wind energy?, Which is a disadvantage of solar energy? and more.

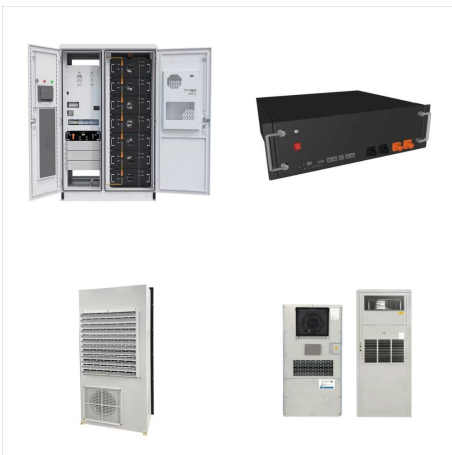


Which of the following is a disadvantage of using solar energy? A reduces greenhouse gas emissions. B requires a high initial investment. C is a renewable resource. D is abundantly available.

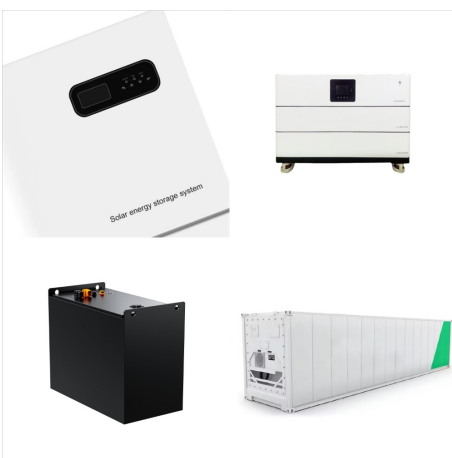
# WHICH OF THE FOLLOWING IS A DISADVANTAGE OF SOLAR ENERGY



The most commonly cited solar energy disadvantage, cost, is declining as the industry expands. The initial cost to buy and install the equipment is not cheap. Still, if cost is an issue, leasing options may reduce the amount of your initial outlay. If you do choose to buy, you will need to live in your home for a number of years before the



One of the disadvantages of using solar energy is that it is dependent on sunlight availability. What is solar energy? Solar energy is the radiant light and heat from the Sun that is harnessed using various technologies, such as photovoltaic (PV) cells, solar heaters, and solar cookers. Solar energy is a renewable and clean energy source that does not generate ???



Explanation: The Energy Crisis of the 1970s i.e. Oil crisis of 1973 and Energy Crisis of 1979 caused a shortage of petroleum (and other commonly used sources) and elevation in its price. This led to the establishment of the Commission for Additional Sources of Energy (CASE) in the Department of Science & Technology (India) in March 1981.

# WHICH OF THE FOLLOWING IS A DISADVANTAGE OF SOLAR ENERGY



Which of the following is NOT an example of using passive solar energy? A flat-plate collector mounted on the roof, which pumps heated water to a storage tank How do ground-source heat pumps (GSHPs) use geothermal energy?



? In contrast, renewable energy sources accounted for nearly 20 percent of global energy consumption at the beginning of the 21st century, largely from traditional uses of biomass such as wood for heating and cooking 2015 about 16 percent of the world's total electricity came from large hydroelectric power plants, whereas other types of renewable energy (such ???



According to the Department of Energy, a typical nuclear facility producing 1,000 megawatts (MW) of electricity takes up about one square mile of space. Comparatively, a wind farm producing the same amount of energy takes 360x more land area, and a large-scale solar farm uses 75x more space.



# WHICH OF THE FOLLOWING IS A DISADVANTAGE OF SOLAR ENERGY



Solar energy is an inexhaustible source of energy with the most potential as it will continue to produce solar power as long as the sun is there. Solar energy is totally free, widely available, produces no pollution, no emission and no noise which means generating solar power produces no carbon footprint. Among all the renewable energy sources available on Earth, solar energy ???



Here are a few of the main advantages of solar. 1. Solar energy is renewable and sustainable. First and foremost, solar power is a type of renewable energy. Unlike finite fossil fuels such as coal, oil and natural gas, energy from the sun is virtually inexhaustible.

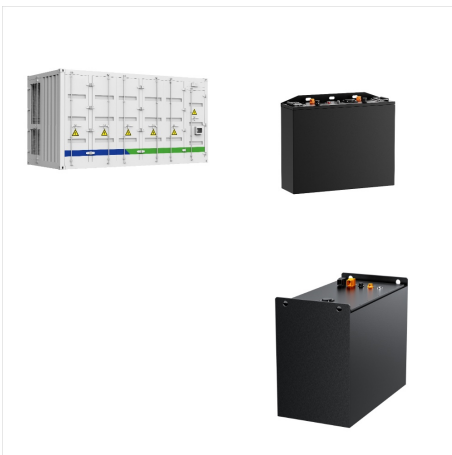


A commonly cited drawback of many renewable energy sources (including wind and solar) is that they are non-dispatchable energy sources. This means that they can't be used to generate electricity 24/7; instead, renewable sources like wind and solar rely on the wind to blow or the sun to shine respectively.

# WHICH OF THE FOLLOWING IS A DISADVANTAGE OF SOLAR ENERGY



One of the most significant advantages of geothermal energy is that geothermal power is a very predictable and reliable source of energy, especially in comparison to other renewable energy resources like wind energy and solar energy. While wind and solar are more intermittent sources that require energy storage in order to be used most



Solar energy has a relatively low net energy compared to other forms of energy generation. Explanation: A disadvantage of using solar energy to generate high-temperature heat and electricity is low net energy. Net energy refers to the amount of usable energy that is produced compared to the amount of energy input required to produce it. Solar



Solar energy is the radiation from the Sun capable of producing heat, causing chemical reactions, or generating electricity. The total amount of solar energy received on Earth is vastly more than the world's current and ???

# WHICH OF THE FOLLOWING IS A DISADVANTAGE OF SOLAR ENERGY



Which of the following is an advantage of biomass energy? Ash is a byproduct. Particulate matter is created. Which statement best describes an active solar energy system? Heat is absorbed in the floors and walls, seeping heat into the home. Match the energy source with the statement that describes a disadvantage of the energy source.