

How does a whole-House Energy Monitor work?

For a detailed account of energy use throughout the home, consider a whole-house power monitor, which has sensors that connect to the home's electrical panel or meter. The energy monitor tracks the performance and power consumption of each appliance based on its connection to an individual circuit.

What is a whole-home energy monitor?

Whole-home energy monitors are small devices that are installed in the circuit breaker panel of a house or apartment and intended to provide what's called load disaggregation: They aim to trace, via current transformers attached to your electrical mains, which devices in your home are drawing power and how much they're drawing.

What is a home energy monitor?

She researched the market based on data from the Department of Energy, the American Council for an Energy-Efficient Economy, user testing, and consumer feedback. Energy monitors help you to figure out how to reduce your electricity use at home. We researched the best home energy monitors.

What is the Neurio Home Energy Monitor?

The Neurio Home Energy Monitor is a whole home electricity monitoring system that tells you where and when energy is being consumed around your home. After installing the single sensor, you can get your finger on your home's energy pulse with the easy-to-use iOS, Android and web apps to track your power usage in real-time.

Where can I get a home energy monitor?

Get the Eyedro Home Energy Monitor at Amazon. For reliable information about an entire home's energy usage, the Sense Energy Monitor is our top choice. To track the usage of specific appliances or outlets, try the BN-LINK Smart Plug.

How many circuit-level sensors does a whole-home energy monitor have?

That approach may appeal to you, and the company also offers upgraded models (or the equivalent retrofits) that add eight or 16 circuit-level sensors so that you can directly see what each circuit in your home is using

WHOLE HOUSE POWER MONITORING SYSTEM



on top of how much power is being drawn off your mains. What are whole-home energy monitors, and what are they for?



TOM: You know, as green becomes more popular, so has a whole host of tools to help you monitor your electrical use. But while most of them have only been capable of monitoring what was plugged into them today, now there's a whole-new array of whole-house monitoring systems that are becoming more and more common and more affordable.



In June of 2022, I wrote about the Emporia Vue home electricity monitoring system I installed at my house. I've posted data on LinkedIn and in some other articles since then. Now, though, I've got a whole year's worth of data, so let me overwhelm you with graphs today.

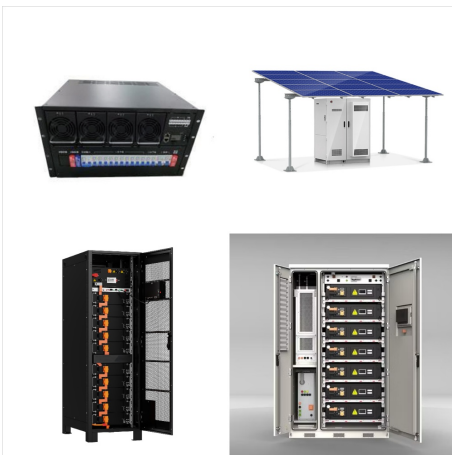


No algorithms, no guessing and no waiting, the Inhab Energy Monitor gives you up-to-the-minute information on your energy usage. Start your smart living journey with the Inhab Energy Monitor, Product includes energy monitor, wire harness, 2 x 200A CTs, 16 x 50A CTs, WiFi antenna assembly, 2 x wire nuts and splicing wires.

WHOLE HOUSE POWER MONITORING SYSTEM



DIY instructions included, but a professional electrician is recommended. The Vue system is designed for field installation in a switch enclosure as per 312.8(B) of the 2017 NEC regarding Power Monitoring Equipment.



You already know your whole house uses a lot of energy, that's the bottom line of your monthly bill, what you need is a reliable breakdown to actually manage your energy dollar. IoTaWatt is probably the only monitor in it's class that can literally be used to monitor any power system. It is in use in over 60 countries worldwide. USA split



Electricity monitors for home and business, providing simple solutions for monitoring electricity in real-time. 1-226-499-0944 sales@eyedro . Shop. Shop for Home; Shop for Business RV Park and Campground Power Monitoring Solutions; Electric Vehicle Energy Management System MyEyedro is included with your Eyedro system at no extra cost

WHOLE HOUSE POWER MONITORING SYSTEM



Hi everyone, Looking for the best solutions for whole home energy monitoring. We live in a typical US "mc mansion" that is embarrassing as hell due to it's excess for a Canadian/Swiss family that's been relocated. But it is what it is??? The house has twin 200A service feeds. It also has a generator feeding a 150A ATS panel for when power goes down. ???

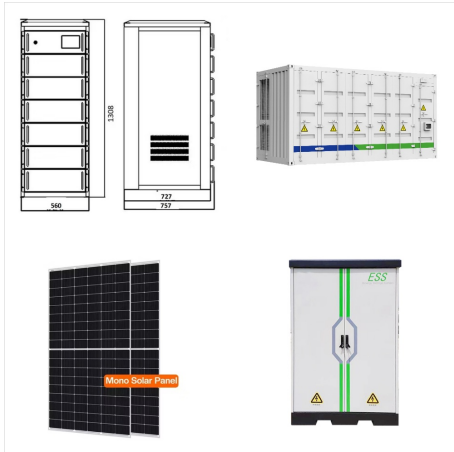


Leviton's Whole Home Energy Monitor (LWHEM-2) is the smart solution for your home's electrical system. It provides real-time energy consumption data and controls Leviton Smart Circuit Breakers*. With inputs for up to three pairs of optional LSMMA Current Transformers (CTs) to measure energy sources, the LWHEM provides an aggregate view of



No algorithms, no guessing and no waiting, the Inhab Energy Monitor gives you up-to-the-minute information on your energy usage. Start your smart living journey with the Inhab Energy Monitor, Product includes energy ???

WHOLE HOUSE POWER MONITORING SYSTEM



Schneider Electric Power plug in relay, Harmony, 15A, 3CO, with LED, lockable test button, 24V DC (10 Pack) This Harmony RPM power plug-in relay has a coil control voltage of 24V DC and has 3 changeover contacts 3PDT (triple pole double throw) with a rating of 15A. It has large choice of number of contacts for high rated current use.



Up to 8% cash back? Set budgets to manage your energy expenditures before you get a bill. Take control of your energy through smart device integration with Alexa, Google Home, Phillips Hue, TP-Link, WeMo and more. Optimize solar ???



Depending on your needs, you might be better off with a whole-home monitor or an individual appliance energy monitor. You should choose a whole-house monitor if: You can also compare your energy usage data with how much energy your home solar power system generates. The ultimate goal for many homeowners with solar panels is for your energy

WHOLE HOUSE POWER MONITORING SYSTEM



The base model of this monitor offers ease of use, and that is why many reviewers prefer this full-featured device. Sense Energy monitor learns your appliances' cycles. For more efficient results you could also add individual ???



Foreseer-electrical power monitoring system (EPMS) connects an operation's vast array of devices, regardless of the manufacturer or model. Our software offers real-time power and environmental system monitoring at a single facility or multiple locations throughout the world, helping organizations reduce power consumption costs and avoid unplanned downtime due to ???

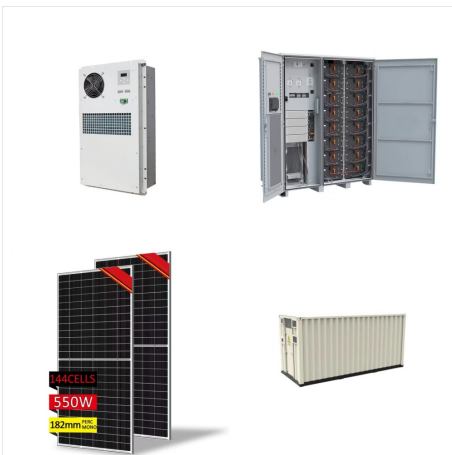


Whole House Monitoring Technology Enjoy web access to real-time information and reports for buildings and mechanical systems. If you are interesting in a monitoring system for your home, business, or multi-unit building, please contact us at +1-207-370-6517 or use our contact form .

WHOLE HOUSE POWER MONITORING SYSTEM



Install the Emporia Vue "Whole Home" home energy monitor or add up to 16 unique sensors to measure specific rooms or appliances. Next, use our free mobile app to find sources of energy being wasted, learn strategies to minimize usage during peak utility times, and receive notifications for any appliances or pumps that have been



The energy monitor comes with instructions on how to install it but most users recommend getting a professional electrician to set it up properly and fast. Most affordable energy monitors do not support monitoring your power usage in real time on a web platform. This model does, in addition to smartphone compatibility.



Brultech GreenEye Monitor (GEM), Eyedro EHEM1, and Sense are probably your best bets out of the 7 options considered. "Can work completely offline" is the primary reason people pick Brultech GreenEye Monitor (GEM) over the competition. This page is powered by a knowledgeable community that helps you make an informed decision.

WHOLE HOUSE POWER MONITORING SYSTEM



S Whole House Surge Protector for 108,000 Amps, Ultimate Surge Protection, Whole Home Surge Protector for Indoor/Outdoor Use, 120/240V. 3.0 out of 5 stars eMylo 2 Channel WiFi Power Meter 80A+80A Smart Power Monitor, Clamp Ammeter Power Monitor, 2.4GHz WiFi, Real Time Monitoring, Smart Life/TUYA APP, Compatible with Alexa and Google



Monitor a home's power with the Emporia Vue 3 energy management hub and monitor. This new generator of the Vue comes with a wired ethernet connection, is UL 610101 certified, and enhanced accuracy. The 3rd generation of the Vue is perfect for monitoring a whole house and managing how much power each system gets. Automate Smart Plugs, EV Chargers, Home ???



If you don't need to monitor your whole home's output, have a cabin in the woods to monitor, or simply need to "monitor in stages," this is a great option for you. The Kuman Electricity Usage Monitor Plug Power Meter works for any home with standard outlets, whether you ???

WHOLE HOUSE POWER MONITORING SYSTEM



The main things I'm looking for are whole-house monitoring (up to 400A) plus the ability to add together pairs of circuits; the latter is because the tankless wants 2 50A circuits. By contrast, my heat pump only needs up to about 17A.



Finally a reliable Zigbee-based energy meter for the whole house! AliExpress Reviews: Zigbee Home Energy Monitor with 3 Clamps, Tuya model PC321-Z-TY. you often come across various ESP32 based DIY projects or expensive brand solutions like the Emporia Vue Energy Monitoring System. This Emporia is highly regarded within the community, but it



? After over 4K hours of real, in-home testing of 25+ security systems and alarm companies, evaluating over 20 data points in 5 categories, we picked Vivint as the best home security system of 2024.

WHOLE HOUSE POWER MONITORING SYSTEM



Whole-House Power Monitors. Whole-house power monitors also track and collect real-time data that you can see in a comprehensive form on the proprietary app. Although this type of home energy monitor does not track energy use for each individual appliance, it can still help you better understand your energy bill and where all that energy has gone.