

Why is biomass a major source of energy?

Biomass was the largest source of total annual U.S. energy consumption until the mid-1800s. In 2023, biomass accounted for about 5% of U.S. total primary energy consumption. Biomass is used for heating and electricity generation and as a transportation fuel.

Is biomass energy a nonrenewable energy source?

Biomass energy can also be a nonrenewable energy source. Biomass contains energy first derived from the sun: Plants absorb the sun's energy through photosynthesis, and convert carbon dioxide and water into nutrients (carbohydrates). The energy from these organisms can be transformed into usable energy through direct and indirect means.

What are the different types of biomass energy sources?

The most common biomass materials used for energy are plants, wood, and waste. These are called biomass feedstocks. Biomass energy can also be a nonrenewable energy source. Biomass contains energy first derived from the sun: Plants absorb the sun's energy through photosynthesis, and convert carbon dioxide and water into nutrients (carbohydrates).

What is biomass energy?

Biomass energy, or "bioenergy," is the energy from plants and plant-derived materials. Biomass has been in use since people first began burning wood to cook food and keep warm. Wood is still the largest biomass energy resource today.

How is biomass converted to energy?

Biomass is converted to energy through various processes, including: Direct combustion is the most common method for converting biomass to useful energy. All biomass can be burned directly for heating buildings and water, for providing industrial process heat, and for generating electricity in steam turbines.

What is biomass & how is it used today?

Biomass has been in use since people first began burning wood to cook food and keep warm. Wood is still the largest biomass energy resource today. Other sources include food crops, grassy and woody plants,

# WHY IS BIOMASS ENERGY RENEWABLE QUIZLET



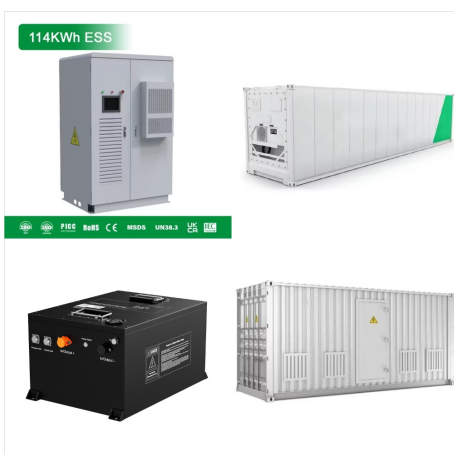
residues from agriculture or forestry, oil-rich algae, and the organic component of municipal and industrial wastes.



Study with Quizlet and memorize flashcards containing terms like They are diffuse and intermittent., natural gas, Solar photovoltaic cells and more. Why is biomass energy renewable? Wind consistency and speed. Which of the following are two of the most important factors in determining where wind farms should be located?



Disadvantages: Form of renewable energy reliant on flowing or falling water to generate mechanical energy or electricity Advantages: Reduces dependence on fossil fuels Often uses waste materials If trees are planted at same rate biomass is combusted, no net increase in atmospheric CO2



All of the above, The use of \_\_\_\_\_ is expected to increase in the future. a. coal b. natural gas c. renewable energy d. all of the above, Energy sustainability can best be achieved by using \_\_\_\_\_. a. nonrenewable energy sources b. renewable energy sources c. carbon sequestration d. recycled plastics and more.

# WHY IS BIOMASS ENERGY RENEWABLE QUIZLET



Study with Quizlet and memorize flashcards containing terms like Because it is inefficient and expensive., Solar, The Pacific Ocean's Ring of Fire. and more. Wind and Biomass are BOTH indirect forms of \_\_\_\_\_ energy. what renewable energy is used the most for electricity? Hills, Plains, and Shorelines



Study with Quizlet and memorize flashcards containing terms like Biomass Energy - Energy Transfer, Where does it come from, What is Biomass Energy and more. Biomass energy is renewable. 1st Disadvantage. Burning the fuel produces carbon dioxide, which is a greenhouse gas that contributes towards global warming

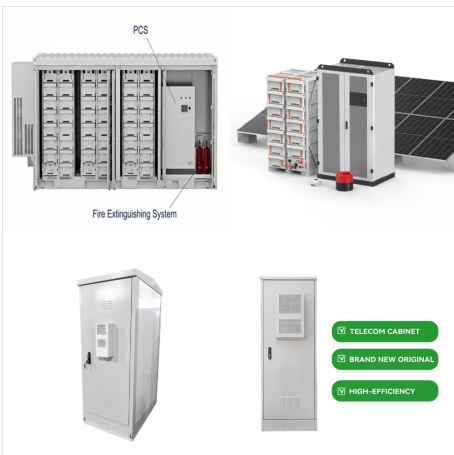


Study with Quizlet and memorize flashcards containing terms like alternatives, nonrenewables, bioenergy and more. The diversity of bioenergy gives us many ways to use it Developing nations use wood for heating, cooking, etc. 80% of renewable energy comes from biomass Biomass is renewable only if it is not overharvested New bioenergy sources

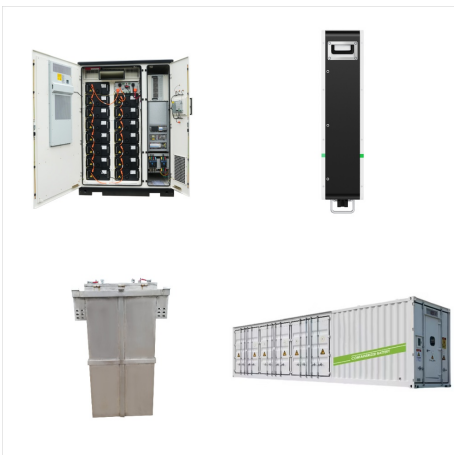
# WHY IS BIOMASS ENERGY RENEWABLE QUIZLET



Earth's energy sources include both renewable and nonrenewable resources. Name at least three sources of energy that could be used in a classroom like the one below. Then describe the ideal energy source for generating most of your school's electricity and ???



Study with Quizlet and memorize flashcards containing terms like Hydroelectric plants using impoundments generate electricity when water is released from a, What part of the United States is best for capturing solar energy?, Geothermal energy is and more. renewable energy sources can \_\_\_\_\_. exceed the demand. Why is biomass energy renewable?



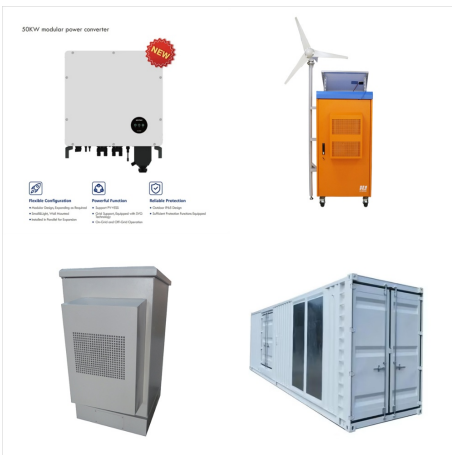
Why is biomass energy considered renewable? Choose matching definition. trees can regrow and rate of harvest should not exceed rate of planting. any living thing is considered renewable. usually, once wood is harvested, the forest is not replanted. Quizlet for Schools; Language Country. United States



# WHY IS BIOMASS ENERGY RENEWABLE QUIZLET



Study with Quizlet and memorize flashcards containing terms like What is the outlook for future geothermal energy sources?, Which statement about solar energy is FALSE? 1.Many areas are not sunny enough for solar energy. 2.Power is produced only during the day. 3.Once installed, solar energy produces no air pollution. 4.The upfront costs of solar energy are now cheaper ???



Earth's energy sources include both renewable and nonrenewable resources. Name at least three sources of energy that could be used in a classroom like the one below. Then describe the ideal energy source for generating most of your school's electricity and ???



Which of the following is a major reason why renewable energy use is growing? a. It is the trendy thing to do in larger cities. b. There is increasing concern over the environmental impacts of fossil fuel combustion. c. Recent inventions have caused ???

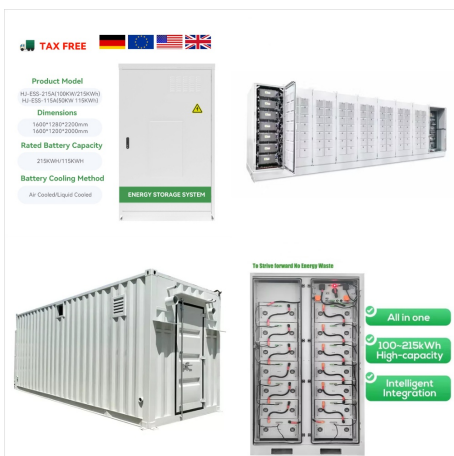
# WHY IS BIOMASS ENERGY RENEWABLE QUIZLET



Wind, solar, and biomass energy are all forms of renewable energy. Wind and solar energy use do not deplete a natural resource as is the case with coal and oil use. Using renewable resources is a sustainable practice, because it allows for continued energy use.

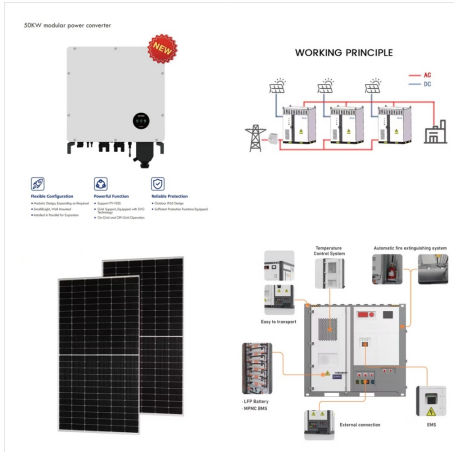


Study with Quizlet and memorize flashcards containing terms like which form of renewable energy is most commonly used, which form of renewable energy makes up the smallest fraction of US energy consumption?, Distinguish between biomass use in MDCs and LDCs. What are advantages and disadvantages? and more.



Study with Quizlet and memorize flashcards containing terms like what is another name for alternative energy?, Benefits of renewable energy, why will renewable energy grow? and more. the burning of biomass energy sources to generate electricity. name sources of biopower.

# WHY IS BIOMASS ENERGY RENEWABLE QUIZLET



Find step-by-step Physical science solutions and your answer to the following textbook question: Explain why coal is considered a nonrenewable energy source, but biomass, such as wood, is considered a renewable energy source..



Study with Quizlet and memorize flashcards containing terms like What is biomass?, Where does the energy come from?, What is the process plants use to convert energy and more. Why is biomass renewable? more can be grown in a short amount of time.



Study with Quizlet and memorize flashcards containing terms like 1. biomass 2. hydropower 3. renewable 4. turbine, The amount of sunlight that reaches the earth's surface depends on \_\_\_\_\_. The most widely used renewable energy source is \_\_\_\_\_. and more.

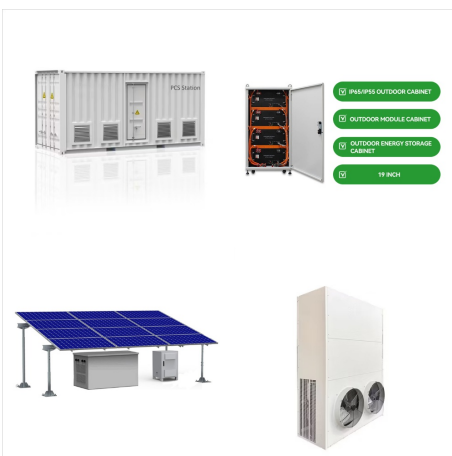
# WHY IS BIOMASS ENERGY RENEWABLE QUIZLET



Study with Quizlet and memorize flashcards containing terms like What are the sources of biomass energy? Why is it a renewable energy source? Explain., How do the renewability and cleanliness of biomass compare with other renewables such as solar, geothermal and wind?, Which is not a source of biomass energy? a)Forest b)oil c)Agriculture d)energy crops ???



Biomass is a renewable energy source. Why isn't the use of biomass sustainable? Choose matching definition. provides unlimited energy, enhances biodiversity, and is carbon neutral. is a clean energy source that requires no harvesting. Quizlet for Schools; Parents; Language



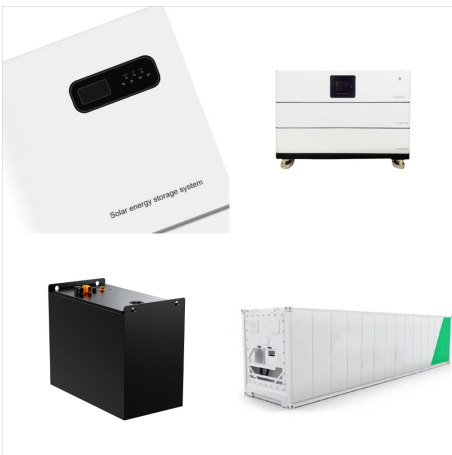
Biomass is renewable organic material that comes from plants and animals. Biomass can be burned directly for heat or converted to liquid and gaseous fuels through various processes. The amounts???in TBtu???and percentage shares of total U.S. biomass energy use by consuming sector in 2023 were: Industrial???2,225 TBtu???45%; Transportation



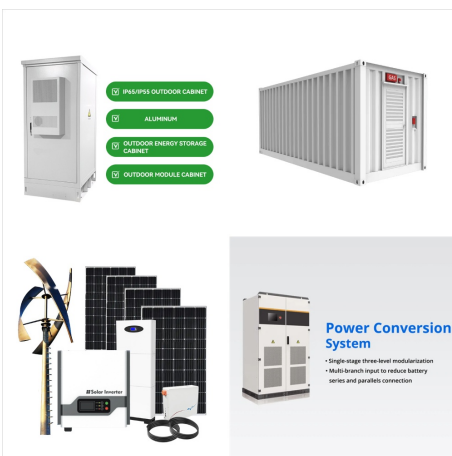
# WHY IS BIOMASS ENERGY RENEWABLE QUIZLET



Biomass=organic material that makes up organisms + their wastes (uses recent photosynthesis VS ancient photos. so carbon neutral) Bioenergy= energy derived from biomass Biomass= crop residue, trees, charcoal, wastes, landfill gas, livestock manure waste for generating electricity Biofuels (renewable fuels) for transportation (corn for ethanol, soybeans, biodiesel/ cooking oil, ???)



Study with Quizlet and memorize flashcards containing terms like hydroelectric, solar energy, wind energy and more. that are continuously replenished. This includes sunlight, geothermal heat, wind, tides, water, and various forms of biomass. This energy cannot be exhausted and is constantly renewed. renewable energy resources are all



Study with Quizlet and memorize flashcards containing terms like energy sources, What are some renewable sources of energy?, solar energy and more. Producing alcohol and methane in large quantities is expensive. This is why biomass fuels aren't widely used today in the USA. As fossil fuels become scarcer, biomass fuels may play a larger