



Why is my ring solar panel not charging?

Dealing with a solar panel that isn't charging can be irritating. There could be a few reasons why your Ring solar panel isn't charging: Let's go over each of these reasons and suggest some solutions. First, make sure your Ring device's battery isn't fully charged. Ring solar panels are designed to stop charging once the battery hits 90% capacity.

Why is my solar charger not charging my battery?

In order to extend the lifetime of the lithium-ion battery, your Solar Charger or Solar Panel will not begin charging your battery until its percentage drops below 90%. You may see the solar device's status as "Not Connected" in the Ring app when your battery is over a 90% charge, and this is normal.

Why is my ring battery not charging?

**Faulty Cables or Connections:** A damaged cable or a loose connection can disrupt the power transfer from the solar panel to your Ring device. **Cloudy or Short Winter Days:** Less sunlight means less power. Overcast days or shorter winter days can naturally reduce the panel's charging capabilities.

Why is my ring camera not charging?

A few things can prevent your Ring solar panel from charging your Ring camera. One of the most likely reasons is that your Ring camera doesn't have batteries. This would happen both if the camera doesn't come with any batteries or if the camera's batteries haven't been placed in the device.

Why is my solar device not connected in the ring app?

You may see the solar device's status as "Not Connected" in the Ring app when your battery is over a 90% charge, and this is normal. Your Solar Charger or Solar Panel will only show as connected in the Ring app when it has stored power.

What should I do if my ring solar panel won't charge?

Clean the solar panel regularly with a soft, dry cloth and ensure it is free from any cracks, damage, or blockages inside. **Faulty Connection:** The connection between the Ring Solar Panel and your Ring device may be damaged - or there is a loose wire preventing the charge from being delivered properly.

# WHY IS MY RING SOLAR PANEL NOT CHARGING



Additionally, if the solar panel is not in direct sunlight for a long enough period, it will also show as "Not Connected." 2. Your Ring Solar Panels are Not Charging your ring video doorbell camera through Sun. Your Ring Solar Panel will not charge your Ring Video Doorbell Camera through the sun. The device will only begin to charge once



Traditional battery chargers might not always be an option, especially in remote areas or during power outages. This is where the question arises: will a 1.5-watt solar panel charge a car battery? A 1.5-watt solar panel can indeed charge a car battery, but the process will be extremely slow and may take several days or???



Faulty Solar Panels: Sometimes, the issue lies with the panels themselves. A quick check of the voltage in full sunlight helps me determine if they're generating power properly. Broken Charge Controllers: These devices regulate the flow of electricity from the panel to the battery. If they malfunction, the battery won't charge.

# WHY IS MY RING SOLAR PANEL NOT CHARGING



The Ring solar panel offers convenient charging for Ring doorbells and cameras. However, it's important to note that not all devices are compatible with it. For instance, the traditional Ring solar panel cannot be used with a Ring spotlight camera.



Check the power status. The Ring app can tell you a lot about the status of your battery and power system. Start the app and then, on the Dashboard page, tap the gear-shaped Settings icon atop the



Why is My Ring Solar Panel Not Charging Stick Up Cam? This specific issue often boils down to the device's battery management system. Ring devices are designed to prevent overcharging, which can shorten the battery's lifespan.

# WHY IS MY RING SOLAR PANEL NOT CHARGING



My Ring app says my Ring device is "Not Connected" to solar. What should I do? We suggest you update your Ring app to the latest version. You should also make sure the the Solar Charger's power connector(s) are firmly secured to the back of your battery doorbell. Handle the connector wires with care, as they can be fragile.



A common issue like insufficient sunlight can prevent a Ring camera from charging properly with a solar panel. Solar panels for Ring devices, such as doorbells and cameras, are designed to maintain the charge of the device's battery. However, users often face issues where the solar panel does not charge effectively.



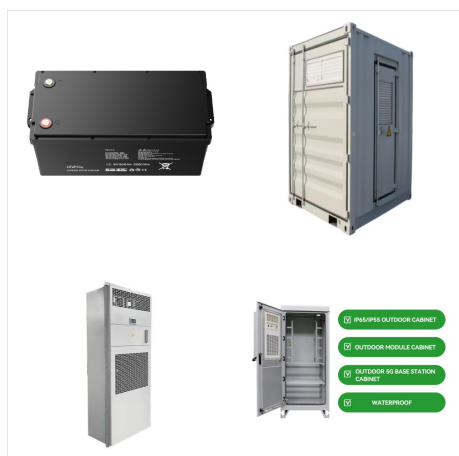
If your solar panel is not charging your battery properly the likely culprit are mainly: Wrong Solar Panel Setup, Equipment Problems, Internal Problems of the Battery or Faulty Battery, and Solar Charge Controller Issues. The easiest way to fix them is to replace faulty equipment.



# WHY IS MY RING SOLAR PANEL NOT CHARGING



Your solar panel won't work in extreme weather conditions or without proper sunlight. Trees and other like objects can affect the amount of voltage your panel produces. Another common issue might be that your solar charge controller is broken. In that case, your battery won't get charged. Usually, low-quality charge controllers have this problem.



So what happens when I use a battery starting with (in my case) ~60% charge? Dale said I need to charge the battery for 5 hours. But that's not a percent battery charge. My battery charge status is not measured in hours. It's measured in percent. Maybe it's a misnomer to call this a "solar charging panel" and instead a "solar charge maintenance



Does the ring solar panel charge the battery? According to Ring, the solar panel provides a "Trickle Charge," meaning that it charges approximately 1-2% per day depending on the amount of direct sunlight received. The solar panel is supposed to keep the battery charged, but its efficiency is not as high as it could be.

# WHY IS MY RING SOLAR PANEL NOT CHARGING



Ring Solar Panel is not charging. To protect your home and family at all times, having a solar panel can be beneficial stalling a camera with a connected solar panel can keep your Ring video doorbell or your cameras running at all times.. Thus allowing you to keep an eye on your house even when you aren't there. It is an effective method during the day; as the ???



Troubleshooting Tips for Specific Models of Ring Solar Panel not Charging: If your Ring Solar Panel is not charging, try these steps: provide enough sunlight, check compatibility, inspect for defects, verify wire connections, reboot the connected device, check battery level, reinstall the solar panel, and contact the support team for assistance.



FAQs About Ring Solar Panel Charging. Here are answers to some frequently asked questions about solar panel charging issues: Why Does My Ring Solar Panel Charge and Then Stop? The Ring solar panel stops charging once the device's battery level hits 90%. This is a safety feature to prevent overcharging and potential battery damage.

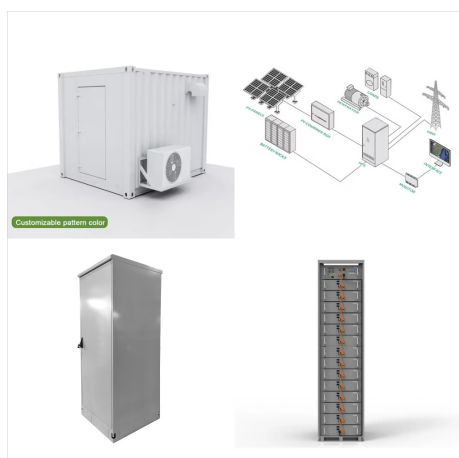
# WHY IS MY RING SOLAR PANEL NOT CHARGING



Installing ring solar panel to keep your Ring devices always charged is the best solution to keep your Ring devices working without the need for battery replacement. But there are a few situations when ring solar panel fails to charge your ring devices battery. So, why is my ring solar panel not charging? The ring



I'm a dealer of Ring products. And all of the sudden, the solar panel stopped charging. As you can From the pics, it's plugged in. I'm a dealer of Ring products. And all of the sudden, the solar panel stopped charging. As you can From the pics, it's plugged in. I even tried a BRAND NEW cam and panel!!! Been at this for a coupl



Why Is My Ring Solar Panel Not Charging. We have established that the ring solar panel plays a lot of role in ensuring your ring devices work all clock round for optimal results. Ring is a top brand for security and intelligent camera surveillance units.

# WHY IS MY RING SOLAR PANEL NOT CHARGING



The Ring solar panel is an eco-friendly way to charge Ring devices, like a Ring doorbell camera. However, situations could arise where your Ring solar panel does not charge. Why is your Ring solar panel not charging, and how can you fix it? The Ring solar panel may not charge if there is insufficient sunlight,& hellip; Continue reading Ring Solar Panel Not ???



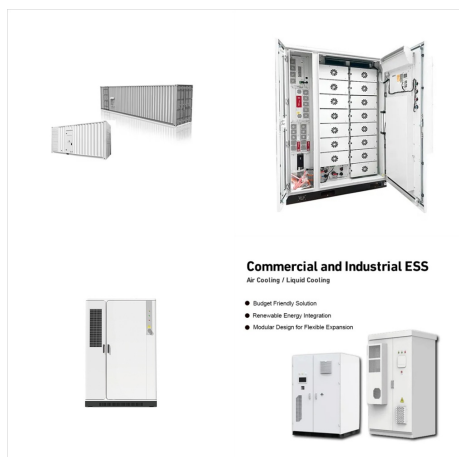
4. How Long for Ring Solar Panel to Charge? A Ring solar panel typically needs about two to four hours of sunlight to generate enough power to charge a device. This time would often vary depending on the type of Ring solar panel you own, the intensity of the sun that day, and the battery health of the device.



There could be a few reasons why your Ring solar panel isn't charging: Battery Health and Performance. Check Your Solar Panel Compatibility. Check Solar Panels and Connections. Make Sure Adequate Sunlight. Reinstall Your Ring Solar Panel. Reset the Ring ???



# WHY IS MY RING SOLAR PANEL NOT CHARGING



While you cannot add another battery for the Solar Steplight or Solar Pathlight, you can always take those devices inside for a quick charge using the micro-USB cable whenever needed. Tap for more information on placing your lights to maximize the amount of energy your Solar Smart Light receives from the sun.



Ring solar panel not charging . Support Request (Unsolved) Installed a solar panel to my ring camera and when I check the health I see "ring solar panel is connected and able to charge this device" but the battery % keeps going down and not charging. Should it ???



The battery is not charging despite saying it is connected to the solar panel. It is my second device that I run on solar pane I have put up a spotlight cam and connected to a solar charging panel.

# WHY IS MY RING SOLAR PANEL NOT CHARGING



One of the primary reasons why your Ring camera might not be charging with a solar panel is insufficient sunlight exposure. Solar panels rely on sunlight to generate electricity, so if the panel is shaded or positioned incorrectly, it won't receive enough power to charge your camera effectively.