



New Listing 3000W Wind Turbine Generator MPPT Charge Controller Boost Regulator 12V/24V/48V. Brand New. \$12.95 to \$26.95. Free shipping. Horizontal Wind Turbine Generator's 58cm Windmill High Strength Nylon Blades. Brand New. \$23.00 to \$139.00. Free shipping.



Odin Wind Turbines first manufactured in 1996, is one of the leading brands of small wind turbine generators. With a selection of 1kW to 100kW they are ideal for many applications. Highly impressive low wind performance, the Odin range is a solid performer and high quality unit.



Culling out many of the non-turbine options, we had a list of about 70 potential wind turbine for sale across the world. Many of these were completely impractical for home use ??? some were kits for much larger scale turbines ??? while many were obviously poor quality with only a single review of one star only. The Best Wind Turbine for



??? Wind Blades: 3 blades in three tiers total 9 blades ??? Rotor Diameter: 7.0 feet ??? Height: 32 feet ??? Weight: 1450 lbs ??? Construction: All Metal, Special powder coatings ??? Braking: Dynamic Diversion Load and Stop Switch . Call For Pricing! Windspire Wind Turbines. 1kW Wind Turbines; 2kW Wind Turbines; 3kW Wind Turbines; 5kW Wind Turbines



This purchase includes the generator with a built-in charge controller; the turbine blade set is sold separately as a two-for-one deal for ZAR 7,999. Prepare for a dose of innovation! Your delivery includes one sleek box containing the wind turbine generator. Inside the generator body awaits a built-in powerhouse combo: a 10 kW wind power generator and an IoT (Internet of Things) ???



Our patented generator design allows Harmony to operate at a much lower RPM range, which means the wind turbine operates much quieter than other comparable products. Our turbines are not available for sale as of yet. ???



Following are the different types of rotors used for vertical axis wind turbines: Darrieus type rotor. The Savonius windmill consists of a hollow circular cylinder sliced in half, two halves being fixed to a vertical axis with a gap in between.



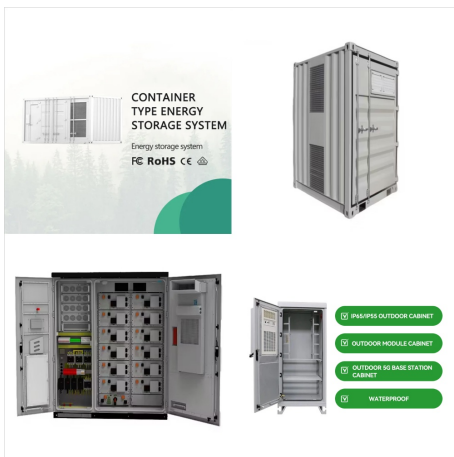
The Bergey BWC Excel 10 is the best 10kW small wind turbine on the market today. With its stainless steel blades and corrosion-resistant frame, this turbine is built to last and will keep your energy bills low for years to come. However, if you'd like something different, we've got a few alternatives. First, let's look at the variables to



Blades Glass fibre, with a high-density polyurethane core and a root reinforcement provides optimum strength and performance. 1 Variable Pitch Patented system allows for passive control of the angle of attack of the blades. This innovative system has 2 speeds of action: the first 30 degrees absorb wind gusts and the next 15 degrees act to limit runaway during sustained high ???



Introducing Rocksolar's Wind Generators ???
designed for Canada's diverse climates. Experience cutting-edge, efficient turbines that turn Canada's brisk winds into dependable energy. Regular price \$4,599.99 CAD Sale price From \$3,599.99 CAD
Unit price / per . Sale. ROCKSOLAR 12V 10Ah Deep Cycle Lithium Battery (LIFEPO4) Sale.
ROCKSOLAR 12V



Designed for homes and small businesses, the Skystream 3.7(R) converts wind into clean energy you can use. It's the first compact, user-friendly, plug-and-play wind generator???with controls ???



2.5 KW plus at 25 mph wind . Offset generator head controls overspeed without the transfer of jarring associated with furling design upward or sideways which transfer shock into the blade set and generator bearings. The "Big Ass" Hurricane 2KW wind turbine is a large wind turbine kit meant for serious DIY enthusiast.



Our patented generator design allows Harmony to operate at a much lower RPM range, which means the wind turbine operates much quieter than other comparable products. Our turbines are not available for sale as of yet. Please subscribe to our newsletter for future updates on our progress!

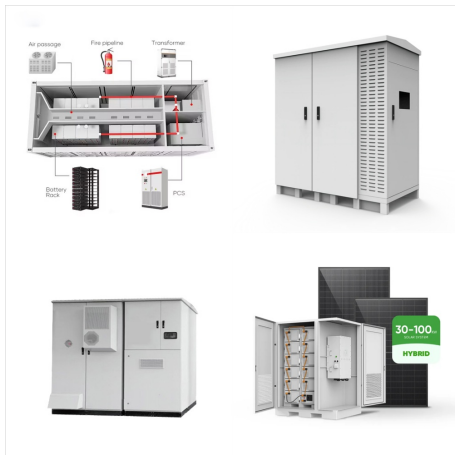
Subscribe to Newsletter



Most wind turbines require winds of 27 mph for full energy production. Anything less isn't maximizing the turbine's capacity. You could look for a lower threshold turbine if you live in a less windy area, and a turbine with more blades (9-11, say) can keep the rotor spinning because there's more torque, weight, and blade surface area



Buy and sell new, used and refurbished wind turbines, spare parts and components on our simple and reliable platform. Logistics. Generator for Senvion 3.XM Sale \$ 120,000.00 \$ 55,000.00. Condition: New. View Details; Join the Wind Aftermarket to buy and sell new, used and refurbished wind turbines, spare parts, and components.



Our vertical axis wind turbines come in many sizes and shapes from our 750 watt wind turbine up to our 5kW wind turbine. Affordable, attractive, and Ultra Quiet, creating clean energy from the ???



Carbon Fiber Raptor Generation 4, Raptor Generation 5, or Aluminum Missouri Falcon wind turbine blades. Dual Freedom II Wind & Solar Digital All in One Charge Controller with LED Meter. 1200 Watt Divert Load. 3-Phase Brake Switch for Dual Core Wind Turbines. Relay and charge controller with LED volt meter. Heavy duty battery cables. and dual



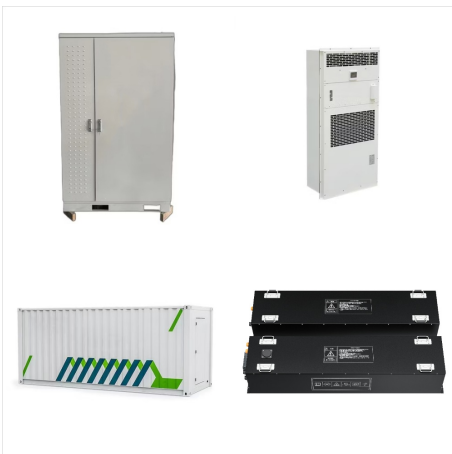
The OW-15kWH wind turbine uses a direct-drive permanent magnet synchronous generator with a generator starting torque of 7-10Nm and can be started at a wind speed of 2.5m / s. The maximum output power of the fan can reach 18kW, and the generator complies with IEC 60034-1 Medium S1 continuous working system requirements.



SD6+ Our SD6+ turbine is a 6KW turbine that can reach 9kW in high wind speeds, mounted onto either a 9m, 15m or 20m gin pole or hydraulic tower which can be set in either a fixed concrete base, or above ground base.



Engineered aerodynamics ensure maximum rotor capture power from wind - CP 0.35 in low wind - with amazingly low noise operation and minimal vibration; True symmetrical balanced aero foil blades ensure rotor drive matches with generator rotation perfectly for maximum efficiency power



A 20kW wind turbine produces enough energy to power several US homes. These are residential turbines but are also used as community-sized wind turbine that produces the right amount of power for residential development, farms, and small businesses. Predominantly, however, 20kW units are often used in agricultural and light industrial



? Vertical wind turbines are becoming a popular option if you're looking to harness renewable energy. These compact and efficient devices offer a unique way to generate electricity from wind power, even in urban or suburban settings where traditional horizontal wind turbines may not be possible.. With new technology, vertical wind turbines now have sleek designs that ???



REQUEST A FREE PERFORMANCE PREDICTION FOR YOUR LOCATION A breakthrough in small wind affordability The Bergey Excel 15 is the newest addition to the Bergey product line and is the most advanced and economical small turbine in the world. With its large rotor and excellent low wind performance. It can power a total electric ??? Continue reading "Excel 15"



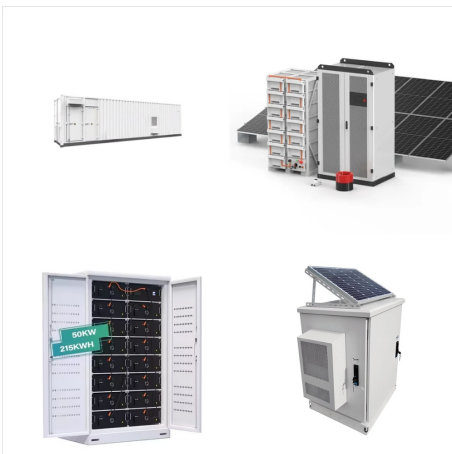
The Vertical Axis Wind Turbine is a wind power generation design that puts the main rotor shaft transverse to the wind. The main components of the system are located at the base of the tower on which the vertical blades sit. This differs from the more common Horizontal Axis Wind Turbine (HAWT), where the blades attached at the horizontal rotor shaft.



Explore Canada's best home wind turbines and solar panels by TESUP. Discover cutting-edge technology for sustainable energy solutions. Start your journey towards a greener future with our innovative products and expertise. Find out more today! Choose another country or region to see content specific to your location and shop online.



Small wind turbines are eligible for a 30% federal tax credit under the Inflation Reduction Act of 2022, similar to solar panels. Additional federal incentives offered by the U.S. Department of Agriculture for rural businesses and farms can bring down costs even further, but they are not intended for residential use.



2 Generator Permanent magnet generator of 40 poles, 20 kW maximum power at 120 rpm and 1,700 Nm provides a high level of energy performance. 3 Anemometer Wind speed sensor accurately tracks the behaviour of the wind in real time, in order to improve the turbine's performance and safety. 5 Controller & Monitoring