

Can a wind turbine power a home?

Or pair it with a solar array to power a regular home. More expensive than many wind turbines, the Windmill 1500W is also one of the most powerful and comprehensive wind generator kits available. Rated at 1500 W, with a cut-in wind speed of 5.6 mph, this turbine can start generating power even with relatively low wind conditions.

How to choose a home wind turbine generator?

Smaller wind turbine generators can easily be mounted on the roof of homes, trailers, or other areas of the home. Larger turbines will be better placed on poles on your property. Along with the dimensions of your home wind turbine, you need to take into account the weight of the unit.

What can a wind turbine power?

The turbine comes with a 3-phase synchronous generator that can charge a 12 V battery and with an inverter you could use it to power a laptop, phone, tools, or lights. In optimal conditions, you may be able to generate enough energy to power a small home or several home appliances.

What is the best wind turbine power generator?

If you live in a very wet and windy location or want a turbine to place in or near a body of water or on a boat, the Nature Power 70501 500W Wind Turbine Power Generator is a great choice. It features three carbon fiber blades and a robust cast aluminum body. It is also made of weather-resistant materials to survive bad weather.

How many kW does a home wind turbine generate?

A typical single-family home will require a home wind turbine to generate 5 kW to meet household energy needs. To achieve this, you're looking at installing a turbine with around a 13-18 foot rotor diameter, and it will need to be placed somewhere with strong winds for most of the year.

Where can I buy a portable wind turbine?

Get the ECO-WORTHY wind turbine on Amazon. For those looking for an easy-to-transport wind turbine they can take camping or on other travel excursions, this portable wind turbine from Pacific Sky Power puts out 15

WIND POWER GENERATOR FOR HOME



watts of power and can keep cell phones and other electronics charged.



The wind turbine size you will need to power a house depends on your wind turbine's power output and the amount and speed of wind it is exposed to. For instance, a 1.5-kilowatt residential wind turbine can generate enough power for 300 kilowatt-hours each month if placed in a location that receives an annual average wind speed of 14 miles per



Installing a home wind turbine is a great way to harness renewable energy and reduce your reliance on the power grid. While the installation process requires careful planning and expertise, it can be a great long-term investment. These systems typically consist of blades, a nacelle (the housing that contains the generator and other

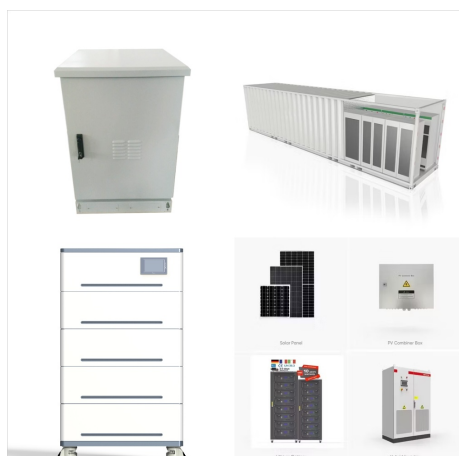


The diameter of most home wind turbine systems range from 4 feet to 10 feet and generate power between 20 and 500 watts of power between 8 and 35 mile per hour of wind velocity (speed). Most small wind turbines have a tilt feature that turns the turbine slightly up or down during a severe wind or storm or a feature to turn off the turbine in

WIND POWER GENERATOR FOR HOME



The RidgeBlade(R) Wind Turbine is an innovative, simple and effective way of harnessing wind power to produce electricity. The RidgeBlade(R) adopts an entirely new design philosophy and addresses many of the drawbacks associated with Solar PV and traditional wind turbines.



A wind electric system is made up of a wind turbine mounted on a tower to provide better access to stronger winds. In addition to the turbine and tower, small wind electric systems also require balance-of-system components. Turbines. Most small wind turbines manufactured today are horizontal-axis, upwind machines that have two or three blades.

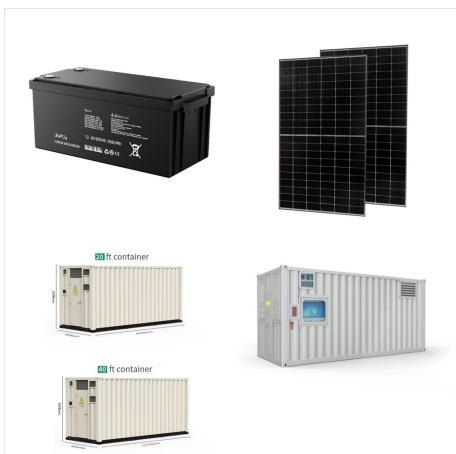


Wind turbines produce no pollution and by using wind power you will be offsetting pollution that would have been generated by your utility company. Over its nominal 30 year life a BWC EXCEL 10 or Excel 15 will offset approximately 1.2 ??? 3 tons of air pollutants and 200 ??? 500 tons of greenhouse gases.

WIND POWER GENERATOR FOR HOME



Future Trends and Developments in Home Wind Turbines. Home wind turbines are an emerging technology that is still evolving, with several trends and developments that are expected to shape the industry in the coming years. Some of these include: Advancements in technology. As technology continues to improve, it is likely that home wind turbines



Small wind turbines work by converting the wind's kinetic energy into electrical current. The blades on the turbine catch the wind, and the rotor spins. This spin turns a generator, which produces electricity that you can use ???



Future Trends and Developments in Home Wind Turbines. Home wind turbines are an emerging technology that is still evolving, with several trends and developments that are expected to shape the industry in the coming ???

WIND POWER GENERATOR FOR HOME



Wind energy is an excellent option that can ensure a significant reduction in your power bills. Let's explore together the many home wind turbines available for use at home. For these small home wind generators, they can be installed anywhere on your property and can help you cover either part or your entire energy needs.



The power output of a wind power generator for home use depends on several factors, including wind speed, turbine size, and efficiency. Generally, small residential turbines produce between 1 kW to 10 kW of power. To estimate potential energy production, consider the following formula:



Things To Keep in Mind When Shopping for a Wind Turbine. It is important to note that wind turbines are not 100% efficient. This caveat means that a 1kWh turbine will never generate 1,000 watts. The average efficiency of a small wind turbine is 20-35%. So, a 1kWh turbine will generate 200-350 watts of power on average.

WIND POWER GENERATOR FOR HOME



Small wind turbines can be a valuable addition to a home's energy portfolio, especially when paired with solar panels. With careful and informed decision-making, they offer homeowners a chance to generate clean electricity, lower ???



Wind turbines work on a simple principle: instead of using electricity to make wind???like a fan???wind turbines use wind to make electricity. Wind turns the propeller-like blades of a turbine around a rotor, which spins a generator, which creates electricity.



You need a minimum wind speed of around nine mph (14.5 kph) to power a wind turbine. And the average wind speed in the US is 12 mph (19.3 kph). This minimum speed means that most country areas have enough wind to generate power with a turbine.

WIND POWER GENERATOR FOR HOME



How much does a small wind turbine cost? A roof-mounted wind turbine will cost you about £2,000 for a 1-2 kW system, but as this system won't generate much power, it will take a while to recoup that cost.. Standalone turbines cost from £7,000 for a 1.5 kW system, which will generate around 2,600 kWh per year.. It'll cost you up to £70,000 for a 15 kW system, which ???



Wind turbines take this kinetic energy of the wind and converts it into mechanical energy or power or electrical power via a generator. And how the turbine does that is by turning the wind energy into electricity by using the aerodynamic force that the rotator blades create.



A home wind turbine, often referred to as a domestic wind turbine, is a smaller version of the massive wind turbines you might see on wind farms. Designed specifically for residential use, these turbines harness the kinetic energy of the wind to generate electricity for your home.

WIND POWER GENERATOR FOR HOME



Certain wind turbine models even feature a solar battery component, allowing them to store surplus wind energy for consumption during windless periods. In some instances, homeowners can acquire a separate solar battery to enhance energy storage capabilities in conjunction with their home turbine. Benefits of Home Wind Generators



The main parts of a home wind turbine typically consist of a rotor, a generator or alternator mounted on a frame, a tail, a tower, wiring, and other necessary parts that make up the wind turbine. Below is a diagram of a wind turbine with more detailed definitions of ???



The Ninilady Horizontal Axis Turbine 10kW generator has a max power output of 50kWh and an average daily production of 15-20kWh. Overall, if you're looking for an affordable, durable 10kW small home wind turbine that is easy to install and maintain, the Max Power turbine is worth considering.

WIND POWER GENERATOR FOR HOME



The wind turbines we have seen that aren't just anecdotal and where someone is serious about harvesting wind power, are generally seated on a tower or pole way above any obstructions in close proximity. Looking like an extra from a Star Wars movie, this small wind turbine for domestic use is, well, different !