



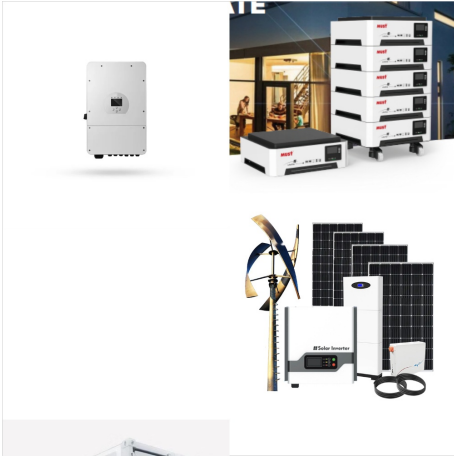
They have a simple but effective 2-blade horizontal axis design with a rated output of 10 ??? 20 kW and have been shown to be reliable in a range of environments with more than 2,000 installations worldwide. Ryse Energy is a reputable manufacturer of small wind turbines, we provide a vast range of wind turbines tailored to your requirements



A roof-mounted wind turbine will cost you about ?2,000 for a 1????2 kW system, but as this system won't generate much power, it will take a while to recoup that cost. Standalone turbines cost from ?7,000 for a 1.5 kW system, ???



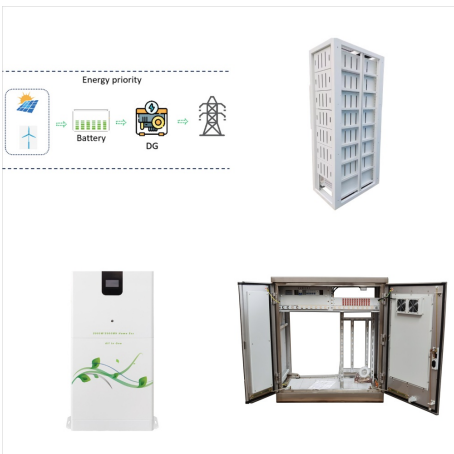
The wind turbine Aeolos-H 20kW is a production of Aeolos Wind Turbine, a manufacturer from United Kingdom. This manufacturer has been in business since 1986. The rated power of Aeolos Aeolos-H 20kW is 20,00 kW. At a wind speed of 3 m/s, the wind turbine starts its work. the cut-out wind speed is 25 m/s.



Ryse Energy E-20 20kW Wind Turbine .
KeyFeatures: *Type- Permanent Magnet *Maximum Power- 20 kW *Rated Power- 18 kW (Software Limited) *Configuration- Horizontal Axis *No. of Blades- 3 *Blade Material- Glass fibre *Blade Length- 4.5 m *Rotor Diameter- 9.8 m *Swept Area- ???



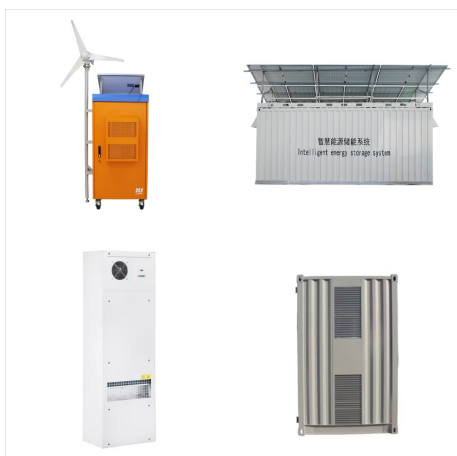
Aeolos-H 20kW wind turbine ???is an updated design with three phase direct-drive generator, no gearbox or booster device. It is more reliable and efficient than the induction generator with gearbox or booster. The 20kW wind turbine was controlled by PLC controller with touch screen. There are triple safety protections for Aeolos-H 20kW wind



? Key Features of Small Wind Turbines by Freen
Freen's wind turbines are available in 3, 20, and 55 kW capacities, thereby scalable and flexible for both residential and commercial purposes. The 20 kW model, Freen-20, targeted at ???



Main Parameter: 20kW variable pitch wind turbines are the most commonly used commercial applications in grid-connected systems of wind power generation. Among them, more than 50sets SENWEI-branded wind turbines with variable pitch controlled 20kW were installed in Italy in 2012, and more than 20sets 20kW pitch controlled wind turbines aslo were installed in Italy in 2013, ???



Horizontal Axis 20KW Wind Turbine Is Widely Used: Off-grid power generation It can satisfy the use of electric motor, electrical equipment, refrigerator, freezer, electric fan, air conditioner, induction cooker, microwave oven, electric rice cooker, electric water boiler, charging and so on.



Model: FT-20KW Power: 20KW Wind Turbine
Voltage: 220V 380V Blade Length: 450cm Blade
Qty: 3 Inverter Output: 20KW 120V/220V/360V
Frequency: 50Hz/60Hz Please contact us by E-mail:
sales01@keltonenergy . INQUIRY Features: 1. ???



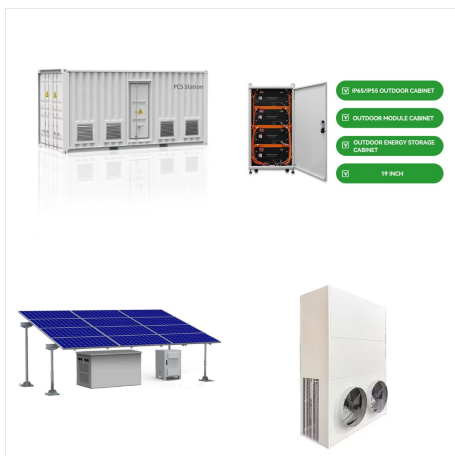
20KW Wind Turbine . ZONHAN wind turbines are made of strong cast steel that makes them durable. ZONHAN wind turbines can withstand harsh environments like strong winds and cold weather ing high performance NdFeB permanent magnet, the alternator is high efficient and compact. The unique electro-magnet design makes the bonding force and cut-in



Manufactured in Northern Ireland for the UK, Westwind developed a range of small turbines ranging in output from 3kw to 20kw. Distinctive in design with 3 blades and a large tail fin with an auto-furling function to move it out the wind and an option to manual furl in high winds.



The wind turbine H13.2-20KW is a production of Anhui Hummer Dynamo Co., Ltd., a manufacturer from China. The rated power of Hummer H13.2-20KW is 20,00 kW. At a wind speed of 3 m/s, the wind turbine starts its work. the cut-out wind speed is 25 m/s. The rotor diameter of the Hummer H13.2-20KW is 13,2 m. The rotor area amounts to 136,85 m².



REQUEST A FREE PERFORMANCE PREDICTION FOR YOUR LOCATION A breakthrough in small wind affordability The Bergey Excel 15 is the newest addition to the Bergey product line and is the most advanced and economical small turbine in the world. With its large rotor and excellent low wind performance. It can power a total electric ??? Continue reading "Excel 15"



The EN-20KW-E use permanent magnetic generator, has high-efficient energy output, is the most compact, safe and reliable horizontal axis wind turbine. The EN-20KW-E wind turbine is widely used in garden, park, farm, island and open areas. It can supply stable & sufficient electricity for the private consuming or selling to electricity grid.



A 20kW wind turbine is a renewable energy device that converts kinetic wind energy into mechanical energy, which is then transformed into electrical energy. These turbines are larger than those previously used in ???



Polaris small wind turbines with capacity ratings from 20kw to 100kw pack all the power and attributes of a large wind turbine, in a small wind turbine ??? making them ideal for use in farming. Using wind turbines for farming is ideal because: ??? wind energy is a clean, emission free, renewable energy source ??? it makes your farm energy



Freem-20 ??? a small vertical wind turbine with 20 kW capacity. In the forefront of the renewable energy industry, FREEM is reshaping the landscape with innovative small wind turbines that ???



A 20kW wind turbine produces enough energy to power several US homes. These are residential turbines but are also used as community-sized wind turbine that produces the right amount of power for residential development, farms, and small businesses.



Aeolos-H 20kW wind turbine is an updated design with three phase direct-drive generator, no gearbox or booster device. It is more reliable and efficient than the induction generator with ???



Aeolos-H 20kw wind turbine is an updated design with three phase direct-drive generator, no gearbox or booster device. It is more reliable and efficient than the induction generator with gearbox or booster. The 20kw wind turbine was controlled by PLC controller with touch screen. There are triple safety protections for Aeolos-H 20kw wind turbine.



The permanent magnetic EN-20KW-H wind turbine blades is straight like "H" type, It has high-efficient energy output, is the most compact, quiet, rugged and reliable vertical axis small wind turbine. The EN-20KW-H wind turbine is widely used in LED lighting system, signal & camera security, telecommunication field for off-grid residence.



The wind turbine CF 20 is a production of C & F Green Energy, a manufacturer from Ireland. This manufacturer has been in business since 2006. The rated power of C & F CF 20 is 20,00 kW. At a wind speed of 1,5 m/s, the wind turbine starts its work. the cut-out wind speed is 15 m/s. The rotor diameter of the C & F CF 20 is 13,1 m.



20 KW fixed-pitch yaw wind turbines are widely installed in Ukraine and Italy, and British customers have installed 20 kW wind turbines for off-grid systems at 360VDC. This traditional type of wind turbines was popular in European countries and the United States before 2014 because of its beautiful appearance and stable power generation



Price of a 5kw, 10kw, 20kw and 25kw wind turbine
The price of a 10kw - 25kw wind turbine will vary depending on the size, where it is to be installed, and how it will be used. The Viking VS, with its variable speed, can deliver anything between 10 - ???



The ReDriven 20kW Wind Turbine is one of our most popular wind turbine systems. The 20 kW boasts start up wind speeds of 4.4 mph (2.0 meters per second) and produces 20,000 watts per hour at approximately 22 mph (11 m/s). The advanced controller system allows for remote access to monitor power output as well as start and stop the system from



Genuine Jacobs Wind Energy Systems(R) have proven they can stand the test of time worldwide Since 1925. In 1980 a restart of production of Jacobs Wind Energy Systems(R) began in Minneapolis, with marketing of larger 10 ??? 20 kW systems. ???



This small wind turbine can be adapted to the conditions required by its location and always complies with the applicable regulations for small wind turbines. Viking VS small wind turbine has a variable effect of either 10kw, 20kw, or even up to 25 kW. ??? The Viking VS" predecessor - the Viking 25 - was introduced in 2009.



Maximum Power 20 kW Rated Power 18 kW
 ROTOR WIND TOWERS DESIGN PARAMETERS
 WEIGHTS Configuration Horizontal Axis No. of
 Blades 3 Blade Material Glass fibre Blade Length
 4.5 m 9.8 m 75.4 m WIND S PEED (m/s) ENERGY
 OUTPUT Estimated Annual Output (kWh) 2 4,080 3
 10,700 4 20,500 5 32,200 6 47,800 7 64,800 8
 81,300 9 95,900 10 107,800 Annual ???



The E200 wind turbine is designed to meet the energy demands of small industries such as farms, greenhouses, warehouses, etc. Its efficiency of generation and design allows us to supply three-phase installations of high power with a high performance. Its production is over 200kWh/day, with averages of 8 to 11m/s. This model has a specific patent that emulates the technology of ???