

Could a 500MW solar project be built in South Norfolk?

Island Green Power is seeking public opinions on provisional plans for a nationally significant solar and storage project in South Norfolk. The renewable energy developer has launched public consultation on early-stage proposals for a 500MW solar development co-located with a battery energy storage system (BESS) that could have up to 500MW output.

Could Norfolk be the 'solar capital of the UK'?

Combined with plans by RWE for an even larger solar farm, High Grove, across 4,000 acres close to the A47 between Dereham and Swaffham, it would make Norfolk the "solar capital of the UK". Becky Buck, clerk to Long Stratton Town Council, said the council has resolved to support Hemnall Parish Council in its bid to fight the plan.

Where is the Drovers Solar Farm - Island Green Power located?

The Drovers Solar Farm - Island Green Power is in the early stages of developing a new solar project located on land north of Swaffham and south of Castle Acre, West Norfolk. Island Green Power is in the early stages of developing a new solar project located on land north of Swaffham and south of Castle Acre, West Norfolk.

Would East Pye solar make Norfolk the 'solar capital of the UK'?

If granted consent, East Pye Solar project would be six times larger than the UK's current biggest scheme. Combined with plans by RWE for an even larger solar farm, High Grove, across 4,000 acres close to the A47 between Dereham and Swaffham, it would make Norfolk the "solar capital of the UK".

Where is the proposed solar farm located?

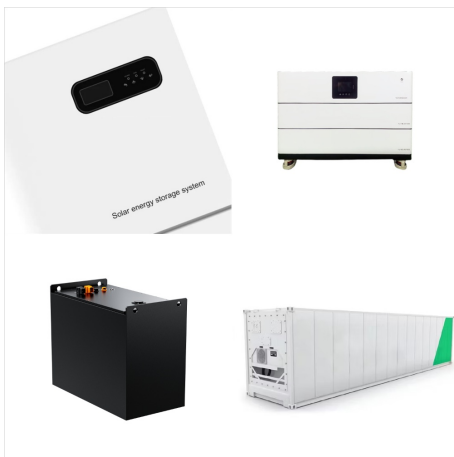
The proposed solar farm is located on land north of Swaffham and south of Castle Acre, West Norfolk. The project will include a Battery Energy Storage System (BESS) so that additional energy generated can be stored and released when needed. We are conducting ongoing land surveys and assessments.

Will a 'daisy chain' of solar panels run through Norfolk?

Norfolk villagers gearing up to fight plans for a huge 'daisy chain' of solar panels running through parishes including Great Moulton, Long Stratton Hemnall, Wacton, Tasburgh, Tharston and Topcroft.



Fresh from the approval of its 600MW project in Cottam, Island Green Power (IGP) has unveiled plans for a 500MW scheme in Norfolk.. Early September saw development consent given to the 600MW Cottam Solar Project which will be made up of four electricity generating stations, including ground mounted solar arrays, as well as associated ???



Welcome to Norfolk Solar, the premier provider of solar PV, biomass solutions and electric vehicle charging points in Norfolk. Solar PV is the greenest way to provide heating and lighting to your home. Solar panels use photovoltaic cells to convert the sun's rays into a direct current of electricity which can be used to power anything



The Norfolk Island Accommodation and Tourism Association (ATA) aims to represent the businesses which provide accommodation and services to visitors to the island, and to show you in this website some of the uniqueness of Norfolk Island, its history and people. Norfolk Island has a wide range of AAA Tourism inspected accommodation, ranging from



Over the course of August at Norfolk Island Airport, the length of the day is increasing on the start to the end of the month, the length of the day increases by 44 minutes, implying an average daily increase of 1 minute, 28 seconds, and weekly increase of 10 minutes, 17 seconds.. The shortest day of the month is August 1, with 10 hours, 45 minutes of daylight and the longest ???



Ensure the optimal performance of your solar panel system. Regular check-ups are crucial. Book your service today with Aspecte. Search for: Search. Aspect Solar. 01953 550640 Request a Quote Wymondham, Norfolk NR18 9SB. 01953 550 640



6 ? A petition has been started against plans to build a solar farm in Norfolk big enough to power more than 11,000 homes. Plans for a solar farm near Reepham - known as Pettywell ???



Norfolk is one of the most luscious, green counties in England, and we really need to keep it that way. Solar energy is widely available to all, cheap and infinitely renewable. After all, the sun will keep shining for billions of years to come, which makes solar power a very reliable and sustainable investment. No wonder installations are popping up all over Norfolk.



Solar Installers Norfolk - If you are looking for perfect panels and help from qualified professionals then try our service. titan solar norfolk va, repair solar panels norfolk va, 3x5 solar panels, norfolk solar panels, norfolk ne solar farm, solar window panels for heat, solar panels norfolk va, solar panels norfolk uk Gates, in 2002, the modern medicine in damage recovery include Chapter 11.



Combined with plans by RWE for an even larger solar farm, High Grove, across 4,000 acres close to the A47 between Dereham and Swaffham, it would make Norfolk the "solar capital of the UK". Becky Buck, clerk to Long ???





Windfinder - Detailed wind, waves, weather & tide forecast for Norfolk Island Airport / Norfolk Island, Norfolk Island for kitesurfing, windsurfing, sailing, fishing & hiking.



East Pye Solar Ltd, part of Island Green Power Ltd (IGP), is introducing plans for a utility scale solar and battery energy storage system (BESS) on land near Long Stratton in South Norfolk, England. Known as East Pye Solar (the "Project"), ???



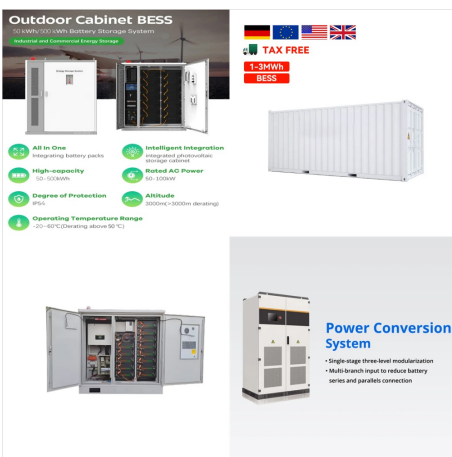
We're MCS Certified Solar Panel Installers in Norfolk & MCS Certified Battery Storage Installers Norfolk and your trusted partner for solar panel installations in Norfolk. We can install your complete Solar Panel System, including the solar panels, inverter and the solar battery storage from just ?6,750 to MCS Standards. We offer high quality products, expert service and ???



The solar farm proposed by Island Green Power will be located between Swaffham and Castle Acre and span roughly 2,800 acres of countryside. The panels will generate up to 500MW of energy ??? enough to power around 115,000 homes annually ??? and will be in use for up to 60 years.



Welcome to Norfolk Solar, the premier provider of solar PV, solar thermal and electric vehicle charging points in Norfolk. Solar PV is the greenest way to provide heating and lighting to your home. Solar panels use photovoltaic cells to convert the sun's rays into a direct current of electricity which can be used to power anything requiring electricity in your home.



CPRE Norfolk is extremely concerned about the number of very large-scale solar farms which are being planned in the county. This is due primarily to the fact that their construction would result in the industrialisation of large areas of attractive, tranquil countryside with solar panels, security fences, CCTV cameras, access tracks and substations covering ???



Solar Together Norfolk is an innovative scheme offering high-quality solar photovoltaic (PV) panels and battery storage. It is a group-buying scheme, which brings households together to get high-quality solar panels at a competitive price, helping you through the process and keeping you informed at every stage.



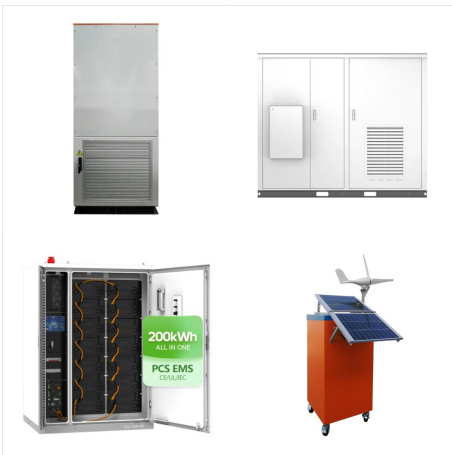
Diesel vs Solar Generation Shows the daily energy production from solar and diesel generator. October November December January February March April May June July August September October 0MWh 7MWh 14MWh 21MWh 28MWh



Norfolk Island, the former penal colony and now tourist destination located nearly 1,500km off the east coast of Australia, is calling for proposals for energy storage to maximise its use of solar



The proposed solar farm is located on land north of Swaffham and south of Castle Acre, West Norfolk. The project will include a Battery Energy Storage System (BESS) so that additional ???



Over the course of March in Norfolk Island, the length of the day is decreasing om the start to the end of the month, the length of the day decreases by 52 minutes, implying an average daily decrease of 1 minute, 45 seconds, and weekly decrease of 12 minutes, 15 seconds.. The shortest day of the month is March 31, with 11 hours, 48 minutes of daylight and the longest day is ???

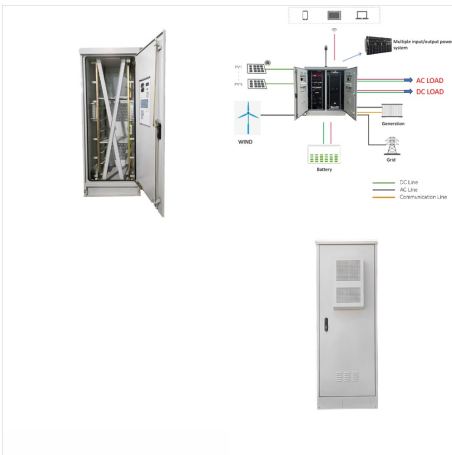


Our Norfolk-based solar panel installers have over 15 years of collective experience in the industry. We have designed and installed solar power systems for a diverse range of residential properties. Premium Products We only install products from reputable, established brands that not only offer local tech support but also provide long

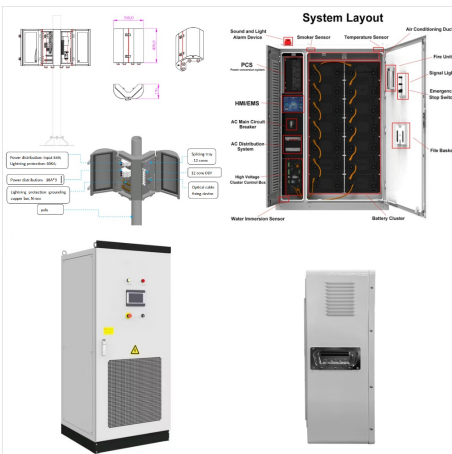




The average size of a solar energy system in Norfolk-island is approximately 4.15kW (including larger, commercial installations), also according to the APVI; The average rooftop in Norfolk-island receives approximately 4.8 hours of "peak sun" per day, averaged throughout the year. Assuming an overall system efficiency of about 80%, this



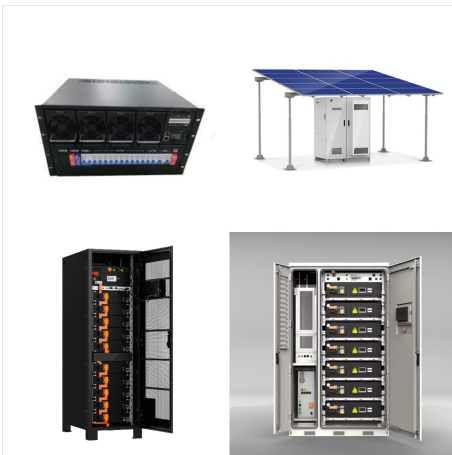
Proudly Norfolk Island's first and only environmentally sustainable hotel, Governor's Lodge is the ideal accommodation option for guests wishing to minimise their carbon footprint. Not only does our solar power system generate a significant 52Kw of renewable electricity which feeds excess back into the island's grid, but our on-site



A map of the proposed East Pye Solar Project. Image: Island Green Power. Island Green Power has unveiled plans for a utility-scale solar and battery energy storage system (BESS) project, slated for development in Norfolk, England. The planned project would be located on various sites near Long Stratton in South Norfolk and is expected to



Over the course of September in Norfolk Island, the length of the day is increasing om the start to the end of the month, the length of the day increases by 49 minutes, implying an average daily increase of 1 minute, 42 seconds, and weekly increase of 11 minutes, 56 seconds.. The shortest day of the month is September 1, with 11 hours, 31 minutes of daylight and the longest day is ???



Stay at Channers for an authentic Norfolk Island holiday today and then move to Norfolk Island with your loved ones tomorrow! Strict-Transport-Security: max-age=31536000; includeSubDomains your bedroom windows, you ooze total ???



A county council leader has accused the government of "riding roughshod" over local opinion after a solar farm equivalent to the size of 1,500 football pitches became the third to be unveiled in



Combined with plans by RWE for an even larger solar farm, High Grove, across 4,000 acres close to the A47 between Dereham and Swaffham, it would make Norfolk the "solar capital of the UK". Becky Buck, clerk to Long Stratton Town Council, said the council has resolved to support Hempnall Parish Council in its bid to fight the plan.