

What does elmeasure do?

Receive new product announcements, industry-relevant news and advance notice on upcoming deals. Elmeasure is an industry leader in smart and sustainable energy management. We specialise in helping businesses, industries and end users reduce their waste, decrease their carbon footprint and monitor and control their energy efficiency.

What is elmeasure energy management system?

Elmeasure's Energy Management System is tailor-made with greater flexibility for customization for any industry, along with prepaid metering & Energy Billing Systems (EBS) for shopping/housing complexes. ELMEASURE® is renowned for its technical know-how in the field of energy management.

Where is elmeasure based?

Elmeasure has its Headquarters in Bangalore and state-of-the-art manufacturing facilities in Bangalore and Coimbatore. Elmeasure is renowned for its technical know-how in the field of energy management. It is backed by a pool of experts to invent, customize & serve the needs of 25+ industries over the globe.

Why should you choose elmeasure?

Elmeasure has a two-decade long track record at a consistent and relentless dedication to quality and value for our clients. Learn more about Elmeasure's journey to becoming an industry leader in smart and sustainable energy management. Energy makes up almost a third of the raw material cost in a textile factory.

What is elmeasure meter?

Elmeasure family of meters goes beyond meeting complex industrial practices with the micro genius series of meters. Meters in the series have combination of electrical parameters which can be used for load studies within the small dimension. - six digit display for better readability of parameters. read more... Save Time!

Is elmeasure a good company?

Elmeasure is a complete package of 500+ product varieties, 10+ Customizable Solutions & 400+ brains with stupendous & steady growth every year that is not the same & not small. As a result, it was the fastest-growing manufacturing company of the year 2016, 2017 & runner-up in the Best SME Manufacturing Company in 2017.



Elmeasure Energy Management System is a centralized IoT platform that performs periodic assessments to monitor, measure and perform predictive analysis to help enterprises elevate their productivity and efficiency.. Energy Management System is a platform that helps Residential complexes, manufacturing plants, commercial buildings to define & suggest what all the ???



Elmeasure meter reads from zero WH and giving the perfect reading it is so simple - Meter starts with reading 1,2,3..etc up to 9999 WH - [ To convert WH to KWH is Divide by 1000] . Example If the reading is 7000, divide it by 1000, It is 7



Ensure optimal electrical safety with ELMEASURE's Ground Monitoring Device (GMD 10), designed for real-time ground fault detection, grounding system monitoring, and earth leakage protection. Featuring remote monitoring, ground continuity, and insulation measurement, it offers fault isolation, equipment protection, and industrial-grade safety for power systems.



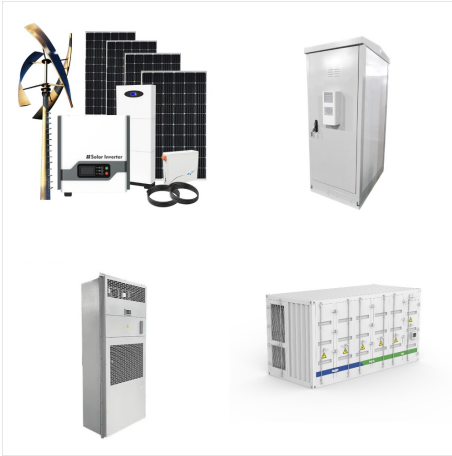
Elmeasure's cutting-edge solutions transforms Lifestyle Showroom in Hyderabad. Learn More. Sign up to our newsletter. Receive new product announcements, industry-relevant news and advance notice on upcoming deals. 1,true,6,Contact Email,2. Stay connected with us: About Us. About Us: Our Story



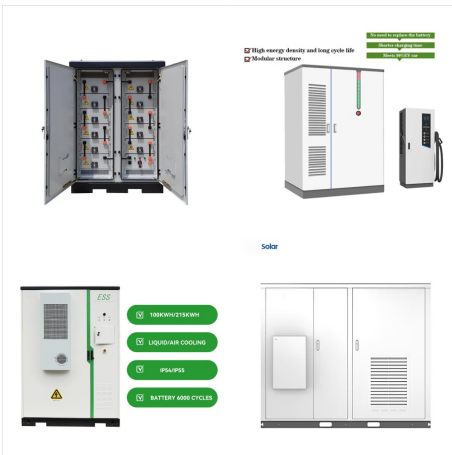
Elmeasure's LV Switchgear for Securipax Packing Pvt Ltd. Learn More. Sign up to our newsletter. Receive new product announcements, industry-relevant news and advance notice on upcoming deals. 1,true,6,Contact Email,2. Stay connected with us: About Us. About Us: Our Story; Careers @ Elmeasure



Discover IoT-enabled energy meters that offer real-time data, remote monitoring, and smart energy management. Enhance energy efficiency with cloud-based solutions, predictive analytics, and automated reporting. Track energy consumption, optimize power usage, and gain data-driven insights for smarter operations. Unlock the potential of Industry 4.0 with smart OT devices and ???



Maximise power quality and system reliability with our Demand Controllers. Enjoy event recording, unbalance detection, and optional digital output. Ideal for measuring different electrical loads in control panels with dynamic and seamless communication. Panel meters



Elmeasure is a leading provider of electrical safety and energy efficiency solutions. We are a global company with offices in the UK, USA, Canada, Australia, New Zealand, Singapore, Malaysia, India, and the UAE. Explore our events, tradeshow, seminars, webinars, training, ???



ELMEASURE | 22,054 followers on LinkedIn. One of India's leading energy solutions provider of panel meters, IoT EMS to transfer switches, LV switchgear and more. | Elmeasure was founded in 2004 by a young and dynamic team of entrepreneurs with a collective experience in the field of energy management. The objective was to make a significant contribution by focusing on ???





The Elmeasure approach to building products and solutions has always been based on the "Quality First" principle along with performance, consistency, safety and value. We realize it is essential to our growth and success. We will always strive to meet our "Quality First" principle in design, manufacturing, and distribution of our



One of the most reputable and long-established events in the energy industry. Middle East Energy 2024 continues to connect the global energy community, allowing you to discover products and solutions that are changing the energy sector and build long-lasting business relationships that will not only help you to stay ahead of the competition but will ???



Energy makes up almost a third of the raw material cost in a textile factory. Optimising energy usage can drastically reduce operating costs. Find out how we partnered with textile giant Sowmiya Spinners to increase factory efficiency. auto



Protect your mission-critical facilities with our Automatic Transfer Switches. Ensure reliability with average and phase-wise information, programmable voltage and current options, and a measurement range of 20mA to 6A. With a ???



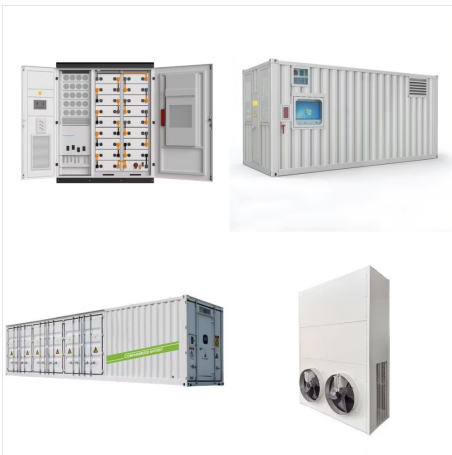
Discover the future of electrical distribution with our Intelligent Circuit Breaker Module. Experience advanced circuit protection with IoT-enabled, microprocessor-controlled breakers for real-time monitoring and remote control. Enhance your power monitoring and energy management with smart, digital circuit breakers designed for predictive maintenance and automated trip settings. ???



Protect your mission-critical facilities with our Automatic Transfer Switches. Ensure reliability with average and phase-wise information, programmable voltage and current options, and a measurement range of 20mA to 6A. With a universal auxiliary input and built-in power supply, experience the ultimate protection from power unreliability and secure your ???



Elmeasure is building a Greener World for a better place to live in with energy saving strategies. Our ELNet Platform can be integrated into SaaS, Cloud and on-Premises with the same tools, features, and customizations. Secure Access - Anything, ???



Digital Panel meters are cost-effective and easy to install with full programmability at the site. Our Products VAF meter ( Volt-Amp-Freq) has many features such as true RMS readings, Average & phase wise information.



Explore the leading Air Circuit Breakers (ACB) in India. Our comprehensive range of ACB switchgear includes low and medium voltage ACBs, ideal for various applications and settings. Discover reliable ACB solutions featuring advanced trip units, LSIG protection, and microprocessor-based control for optimal operation and coordination. Our ACBs offer manual ???



Discover ELMEASURE's Earth Fault Relay for rapid fault detection, circuit protection, and enhanced electrical safety. With customizable relay settings, dual relay control, and IEC 60255 compliance, ensure quick response times and system reliability in power system monitoring. Advanced fault prevention and earth protection solutions.



Get reliable and cost-effective electrical system operations with our Basic VAF Meters. Features include measurement range of 20mA to 6A, average & phase-wise information, and alerts for over-voltage, under-voltage, and over-current. Safe and easy wiring with voltage and current terminals on opposite sides, digital panel meter, Panel meters