

Why is my Xbox 360 AC power supply showing an orange light?

Hi there Danny P! I am Lumie and I would love to assist you today. I am so sorry you are having issues running your Xbox. If your Xbox 360 AC power supply is showing an orange light, it usually indicates that the power supply is in standby mode and not delivering power to the console. This can be caused by a few different issues.

How do I know if my Xbox 360 power supply is working?

Make sure that all three power supply connections are firm. Turn on the console and check the light on the power supply. Solid green or solid orange light: Your power supply is working. If your console won't turn on, try our Xbox 360 No Power Solution. Flashing orange, solid red, or no light: Your power supply may need to be replaced.

Why is my console light flashing orange?

Flashing orange, solid red, or no light: Your power supply may need to be replaced. Try the following solutions: Plug your console's power supply into a different electrical outlet. Do not use a surge protector. If the power supply light is solid red or flashing orange, unplug the power supply and let it cool for 30 minutes.

Why does my Xbox 360 have a red light?

Red light - The power supply is failing. The most common cause is an overheating power supply. Unplug it on both ends and let it sit for at least an hour. Use a bare finger to press the Power button (Xbox 360 S). The S model has a touch-sensitive button, and may not work with a gloved finger or if you use a fingernail.

Why is my power supply flashing orange?

Steady orange light: The power supply is okay and is set to energy-saving power mode. No LED indicator or flashing orange light: This indicates that the power supply is not working correctly and you should troubleshoot it. To fix this error, follow the step in fix #1 above. If this fix fails, then you need to replace your power supply.

How do I Fix my Xbox 360 power supply problem?

Unplug the Xbox from the wall and plug it back in. This simple solution can resolve issues with the power supply and the console. Check the Xbox 360 power changer. To check the status of the power supply, plug it

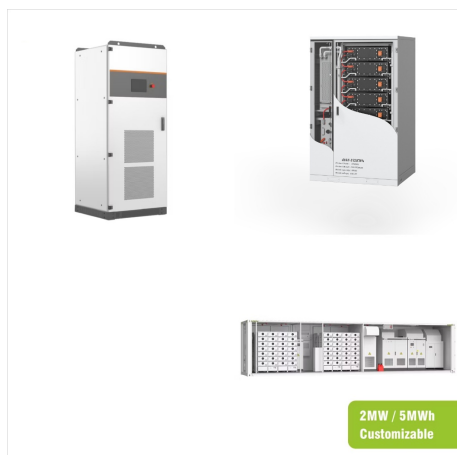
XBOX 360 POWER SUPPLY SOLID ORANGE LIGHT



into the wall and look at the unit's LED light.



My Xbox 360's power supply recently got a power surge and now when plugging it in again, there's no light and my Xbox won't turn on. Before the power surge, the power supply has an orange light and after the power surge, I noticed that the power supply is ???



A few weeks ago my Xbox Power Supply started showing a solid orange light. When i try to turn my xbox one it turns on for half a second and then automatically off. The power supply light quickly goes green and then back to solid orange. Ive looked at videos re wriggling the back a little until you hear a clicking noise. This hasnt worked.



It was just fine to a black screen. The power supply's light is orange, which means the power supply is reportedly good, but I'm not so sure. Xbox Support said that it's a hardware issue, and of course they would be glad to take it in for the steep price of \$99.99. I of course knew this was a ripoff, considering it is out of warranty, etc.

XBOX 360 POWER SUPPLY SOLID ORANGE LIGHT



Click [here](#) and we'll get you to the right game studio to help you. When you open the page, go to the "Help with games" section in order to find the right path to look for help.. Additional information on Game support can be found [here](#): How do I get the right game support?



Then, plug the power supply back into the outlet. If your power supply light is still flashing orange, solid red, or unlit, your power supply needs to be replaced. You can Order a replacement Xbox 360 power supply from our Xbox Online Service Center. Console registration is required to replace the power supply under warranty (the power supply



The constant orange light indicates that the power supply is receiving power. There is an article regarding troubleshooting the power supply. Also, we suggest making sure that ???

XBOX 360 POWER SUPPLY SOLID ORANGE LIGHT



Thanks for reaching out to the Forums for advice on how to attend to this properly. I can totally understand how this could be pretty concerning. I suggest trying the steps here on our Xbox One Power Supply Solution. If that doesn't work however, then you might have to consider replacing the power supply unit. Hope this helped. Thanks for reading!



Welcome to the Ender 3 community, a specialized subreddit for all users of the Ender 3 3D printer. Here, enthusiasts, hobbyists, and professionals gather to discuss, troubleshoot, and explore everything related to 3D printing with the Ender 3.



If your power supply light is still flashing orange, solid red, or unlit, your power supply needs to be replaced. You can order a replacement Xbox 360 power supply from our Xbox Online Service Center. Console registration is required to replace the power supply under warranty (the power supply warranty is the same as your console warranty).

XBOX 360 POWER SUPPLY SOLID ORANGE LIGHT



When I try to turn the Xbox on via the power button, the Xbox makes the usual on noise and the power supply light goes white for a few seconds, then turns off again and goes back to orange. Not sure whether this would be a power supply problem or a problem with the Xbox hardware itself. Any help would be appreciated. Thanks.



Thank you for posting on the Xbox forums. We understand that your console is not able to turn on. The constant orange light indicates that the power supply is receiving power. There is an article regarding troubleshooting the power supply. Also, we suggest making sure that the console is plugged directly into the wall instead of a surge protector.

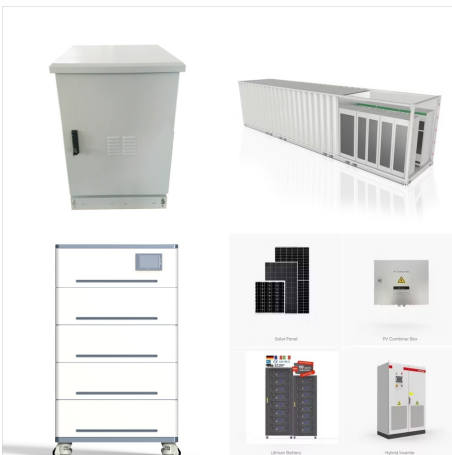


i ran into this issue after not using my xbox 360 for a few years (kept in storage wrapped in plastic, so no dust issue at all). faced same issue of solid orange light when brick is powered, turning to red only when trying to power on the xbox360 (startup beep can ???

XBOX 360 POWER SUPPLY SOLID ORANGE LIGHT



Everything and anything related to the Xbox 360. News, reviews, previews, rumors, screenshots, videos and more! Xbox 360 S Suddenly Not Turning On, Power Brick Has Solid Orange Light . See title, I've had this 360 for 6 years, im the original owner, its been well taken care of and very lightly used until now, and it has also been plugged



If your power supply light is still flashing orange, solid red, or unlit, your power supply needs to be replaced. You can order a replacement Xbox 360 power supply from our Xbox Online Service Centre. Console registration is required to replace the power supply under warranty (the power supply warranty is the same as your console warranty).



There are several possible reasons for the light to flash, including: The Power Supply Unit Is Faulty; The Power Supply Unit Has Been Damaged; The Motherboard Is Not Working Properly; The Power Cord Is Broken; The Console Is Unplugged From The Wall; The Power Brick Is Loose. How To Fix The Orange Light On An Xbox One Power Brick

XBOX 360 POWER SUPPLY SOLID ORANGE LIGHT



Solid Green: If the LED power light is green, the power supply should be operating. Unplug the power supply and plug it back into the wall to see if it allows you to power the Xbox console correctly. Plug the Xbox 360 power adapter in another room to rule out possible outlet issues. **Solid Orange:** There's a strong chance the power supply is



If pressing the power button or eject button doesn't start your console, check the light on your power supply. The power supply light will either be green, red or flashing orange, orange (not flashing), or off (unlit). Go to the section below that matches the colour you're seeing on your power supply light.



Check the LED light on the power supply. Does Xbox 360 power supply have a fuse? The Xbox 360 power supply contains an internal fuse that helps protect your console from too-high voltage and power surges. However, the PSU is a sealed unit and, therefore, the internal fuse cannot be replaced.

XBOX 360 POWER SUPPLY SOLID ORANGE LIGHT



Hi everyone, my house had a power surge yesterday and my console restarted, but continued to work fine. However, when I woke up this morning I noticed an orange light on my power supply and when I tried to turn on my Xbox 360 E, the power button flashed on for around 2 seconds and then turned back off.



Your Xbox 360's power supply also has a light on the back. This light can help you determine if your power supply is failing: No light - The power supply is not receiving power from the wall. Green light - The power supply is working correctly and the Xbox is on. Orange light - The power supply is working correctly and the Xbox is off.



The power supply (or its cable) has failed. It won't always be unlit or red when this is the case: sometimes it'll remain orange, and simply never power on enough to let the Xbox power on. (the "red ring of death" can have multiple causes, as the code merely means "general hardware failure" without pinpointing precisely what)