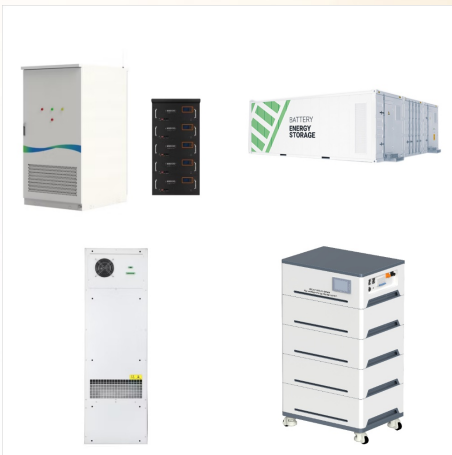




2KV PV wire, or photovoltaic cable, is an electrical wire that plays a big role in solar applications due to a wide temperature range with a cold bend of -40°C to 90°C. The most common use of the photovoltaic wire is for grounded and ungrounded photovoltaic power systems, particularly their interconnection wiring, up to 2000V.



1/C CU 1000V XLPE XHHW-2 Power Cable Power Cable 1000 Volt Single Conductor Copper, Cross Linked Polyethylene (XLPE) insulation XHHW-2 a?c SPEC 45001_PSS DIVISION DATE: 11/08/2018 Rev:2.0.08C SPEC 45001 CONSTRUCTION: 1. Conductor: Class B compressed stranded bare copper per ASTM B3 and ASTM B8 2. Insulation: Cross Linked Polyethylene a?|

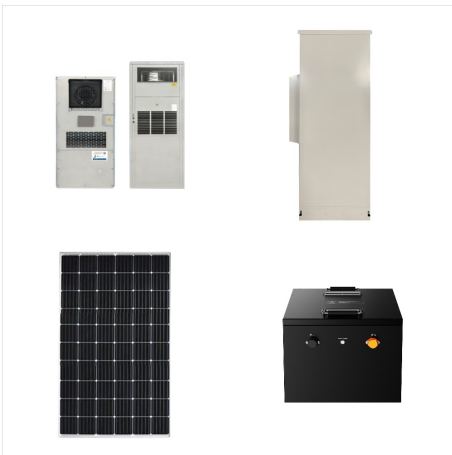


The term "PV wire" (photovoltaic wire) is often used to refer to USE-2 or THHN wire, the terms are not interchangeable. PV wire is specifically rated in accordance with UL 4703. THHN wire is used as general building wire and lacks the construction and strength of specialized cables designated as UL 4703 or USE-2.



Specification : Standards : ASTM B-800, ASTM B-836, ASTM B-901, Underwriters Laboratory (UL) 4703, Type USE a?? 2 or RHW a?? 2 /RHH.

Conductors : The PV cable conductor is an 8000 series aluminum conductor. These conductors are also light, soft, and flexible, hence easy to work with, especially during installation.



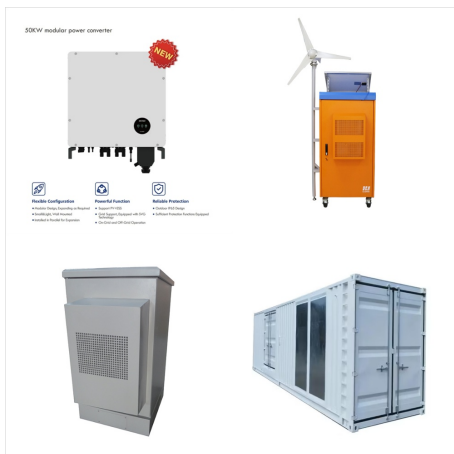
Solar PV Wire; Flexible & Portable Cord. SEOOW - 600V; SJEOOW - 300V; SJOOW - 300V; SJTO - 300V; STO - 600V; SOOW - 600V; SVO & SVT - 300V; Bus Drop Cable; Type XHHW-2/RW90 building wire is intended for general purpose applications utilized in conduit, underground in conduit, or other recognized raceways for services, feeders, and branch



PV Cable and Accessories . Popular AC Residential Solar Products . Racking and Rack Accessories . Solar Essentials. PPE, Heated Gear, Safety, and Supplies 250MCM, Stranded, XHHW Wire, Aluminum, Brown, 1 Conductor, Cut Length Catalog Code: XHHW-250-BRN-STR-AL Stock Code: 0433-9230. This XHHW-2 250 MCM Brown, 35-37 strand aluminum wire a?|



Copper PV Solar Photovoltaic Cable; Central Office Power Cable; Canadian Building Wire; Type MC Copper Conductors; Fiber Optic Cable. Fiber Optic Cable Menu; Fiber Optic Cable. > 10 AWG 3C Unshielded Tray Cable XHHW-2 EPR Insulation CPE Jacket 600V E2 10 AWG 3C Unshielded Tray Cable XHHW-2 EPR Insulation CPE Jacket 600V E2.



SIMPull XHHW-2(R) copper conductors may be used in wet or dry locations at temperatures not to exceed 90° C. Voltage rating for XHHW-2 conductors is 600 volts for all sizes and 1000 volts for sizes 8 AWG and larger.



Conductive: The xhhw cable is able to transmit current efficiently and is flexible for different applications. Installation: The xhhw wire is flexible and easy to install when wiring. Flexible bending in small spaces or tight bends. Cons a?|



Solar PV Wire; Flexible & Portable Cord. SEOOW - 600V; SJEOOW - 300V; SJOOW - 300V; SJTO - 300V; STO - 600V; SOOW - 600V; SVO & SVT - 300V; Bus Drop Cable; Type XHHW-2/RW90 building wire is intended for general purpose applications utilized in conduit, underground in conduit, or other recognized raceways for services, feeders, and branch



Single Conductor Photovoltaic (Type PV) Power Cable 2000 Volt Copper Conductor XLPE Insulation. Sizes 14 AWG through 1000 Kcmil. Heat, Moisture, Sunlight Resistant RoHS. 90°C Image not to scale. See Table 1 for dimensions.
CONSTRUCTION: 1. Conductor: Stranded bare copper per ASTM B3 and ASTM B8 or ASTM B787 2.



We are China Xhhw-2, Xhhw, Xhh, RW75A, R90A, RW90A Outdoor Photovoltaic Installation Wire Cable manufacture and supplier, You can get more details with Email, you will get cheap price or factory price. Get Latest Price Request a quote. Popular Cable Products



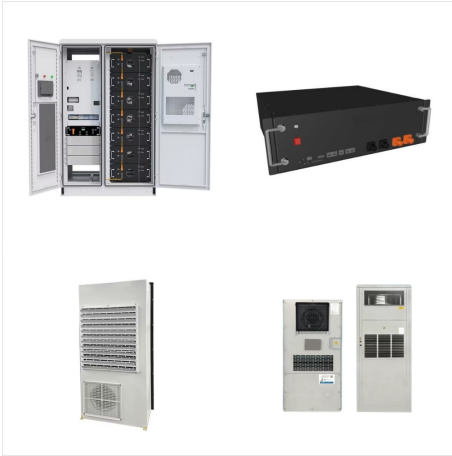
CENTELSA XHHW-2 cables are manufacturing according to the following standards: ASTM B3, NTC-ICONTEC 359. Soft copper wire. ASTM B8, NTC-ICONTEC 307. Concentric Lay Stranded copper conductors. ASTM B787. 19 Wire Combination Unilay Stranded Copper conductors for subsequent insulation UL 1581, NTC-3203. Reference Standard for Electrical Wires, Cables



Our 4 AWG XHHW-2 copper building wire can be cut to your desired length and purchased by the foot. We offer free shipping on all orders over \$1000. The store will not work correctly in the case when cookies are disabled. Solar PV Wire; Flexible & Portable Cord. SEOW - 600V; SJEOOW - 300V; SJOOW - 300V; SJTO - 300V; STO - 600V; SOOW - 600V



XHHW wire is recommended by the electrical distribution industry for commercial, industrial, and institutional building applications. The National Electrical Code (NEC) Article 310 describes the specific applications and installation for this product. (Sun)Light Work: Solar PV Wire vs USE-2 Wire > Tracer or Locating Wire vs THHN for Direct



Solar PV Wire; Flexible & Portable Cord. SEOOW - 600V; SJEOOW - 300V; SJOOW - 300V; SJTO - 300V; STO - 600V; SOOW - 600V; SVO & SVT - 300V; Bus Drop Cable; Type XHHW-2/RW90 building wire is intended for general purpose applications utilized in conduit, underground in conduit, or other recognized raceways for services, feeders, and branch



XHHW-2 insulation, which is similar to XHHW, is suitable for use in dry or wet locations up to 90° C (194° F). XHHW / XHHW-2 electrical conductor insulation is governed by the following Industry Standards: a?c UL 44 a?c CSA c22.2. No38 a?c ASTM-B3 a?c ASTM-B8 a?c ASTM-B800 a?c ASTM-B801 a?c NFPA 70 -2008 (NEC code) a?c U.S. Federal



PV Wire 600v and 2KV-UL4703. Download Spec Sheet > Aluminum PV Wire. Download Spec Sheet > Solar Inverter Cable. Download Spec Sheet > XPTC Tray Cable #12-2 AWG With and Without Ground XHHW/PVC. Download Spec Sheet > Have a Question? Need a Quote? Get in touch and we'll respond within 30 minutes during business hours a?? every time.



Commonly referred to as XHHW wire, XHHW-2 stands for cross-linked, high heat-resistant and water-resistant wire that can be used in wet locations, with the "2" indicating an improved version of the insulation. XHHW-2 is popular in both commercial and residential wiring applications due to its durability and high temp rating. It features stranded or solid aluminum or copper conductors a?|



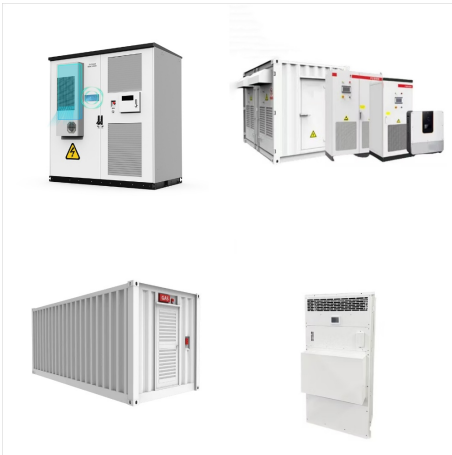
Order your XHHW-2 cable today. 2 AWG XHHW-2 Aluminum Cable offers 100 Amps at 90°C, ideal for power distribution in wet and dry locations up to 600V. Copper PV Solar Photovoltaic Cable; Central Office Power Cable; Canadian Building Wire; Type MC Copper Conductors; Fiber Optic Cable. Fiber Optic Cable Menu; Fiber Optic Cable.



Solar PV Wire; Flexible & Portable Cord. SEOOW - 600V; SJEOOW - 300V; SJOOW - 300V; SJTO - 300V; STO - 600V; SOOW - 600V; SVO & SVT - 300V; Bus Drop Cable; 500 MCM XHHW-2 Aluminum Building Wire 600 V, 500ft or 1000ft Spool. Application: XHHW-2 are primarily used in air duct, conduit or recognized raceways for services, feeders and branch



Solar PV Wire; Flexible & Portable Cord. SEOOW - 600V; SJEOOW - 300V; SJOOW - 300V; SJTO - 300V; STO - 600V; SOOW - 600V; SVO & SVT - 300V; Bus Drop Cable; Yellow Flexible Cord; XHHW wire is generally used for power distribution in residential, commercial, and industrial buildings. They are available as either solid or stranded wire, with



Aluminum 2KV Photovoltaic Cable is primarily used for interconnection wiring of grounded and ungrounded photovoltaic power systems. When installed in accordance with NEC article 690.31(C)(2), PV source and PV output circuits, single-conductor cable of all sizes can be installed in outdoor cable trays. The PV cable is for applications up to 2000 volts and a?|



XHHW wire is a specific type of building wire with high water and temperature resistance. The product is RoHS compliant and can be used for a broad range of general purpose wiring. PV Photovoltaic Cable expand. collapse. PV Photovoltaic Cable Photovoltaic PV Cable - 600V Cross-Linked Polyethylene Insulated 600 Volts - -40°C to 90°C Wet



Solar PV Wire; Flexible & Portable Cord. SEOOW - 600V; SJEOOW - 300V; SJOOW - 300V; SJTO - 300V; STO - 600V; SOOW - 600V; SVO & SVT - 300V; Bus Drop Cable; The XLPE insulation of the XHHW allows the cable to bend and flex better than the THHN's PVC insulation a??so XHHW is much easier to work with during the installation process.



PV Wire 600v and 2KV-UL4703 Renewable Energy. UL-4703 rated single-conductor, cross-linked polyethylene type Photovoltaic (PV) wire; XPTC Tray Cable #14-10 AWG Shielded XHHW/PVC Industrial. Cross-Linked Polyethylene (XLPE) insulated conductors with a PVC outer jacket;