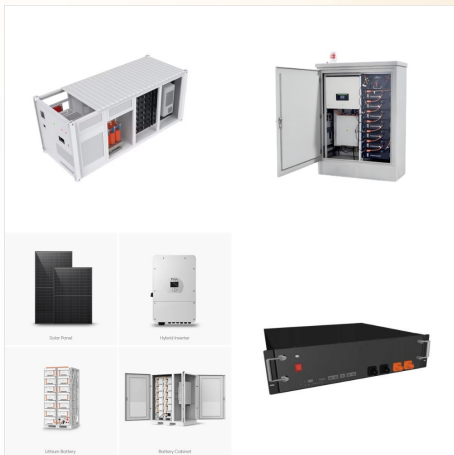




Niger: Many of us want an overview of how much energy our country consumes, where it comes from, and if we're making progress on decarbonizing our energy mix. This page provides the data for your chosen country across all of the key ???



Niger: Many of us want an overview of how much energy our country consumes, where it comes from, and if we're making progress on decarbonizing our energy mix. This page provides the data for your chosen country across all of the key metrics on this topic. Renewable energy here is the sum of hydropower, wind, solar, geothermal, modern



5 ? A coalition of Niger Delta groups has described Shell UK's planned sale of its Nigerian subsidiary without consulting host communities as unhealthy and unacceptable. The women's position was presented by Mrs. Emem Okon of Kebetkache Women Development and Resource Centre during a protest in Yenagoa, Bayelsa State, on Friday, December 20, 2024. ???



Zebra Renewables is a newly established South African company that will be manufacturing biomass fuel products for the renewable energy market in Europe. We are a production subsidiary of White Horse Energy Ltd (the UK parent company) and have plants in Sabie, Mpumalanga and Howick, KZN. We are recommissioning our Sabie Pellet Plant to produce



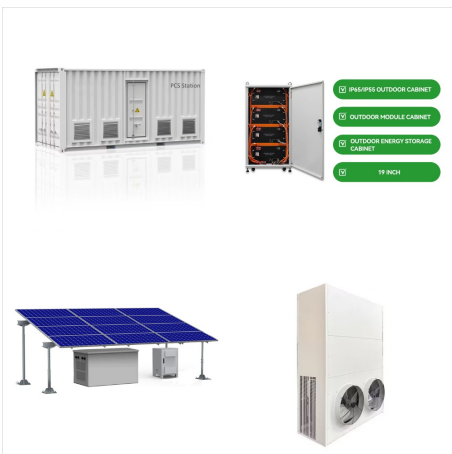
Zebra Renewables Official Store. 100% positive Bewertungen. 44 Artikel verkauft. 5 Follower. Teilen. Kontakt. Verk?ufer speichern. Shoppen. Impressum. Bewertungen. Bei uns ist der Artikel ausverkauft, aber hier sind weitere Shops, die Sie interessieren k?nnnten. ???



Location: United Kingdom Member since: 15 Oct, 2024 Seller: zebra\_renewables\_official\_store Business details Business name: Zebra Renewables Ltd Address: 18, Europa House, Wadsworth Road, UB6 7JD Perivale, United Kingdom



Zebra Renewables is a UK headquartered renewable biomass business with operations across three continents. Active in the retail, wholesale and manufacturing sectors of domestic renewable biomass produ



Finance Manager Zebra Renewables Pty Ltd ? Experience: Zebra Renewables ? Education: University of South Africa/Universiteit van Suid-Afrika ? Location: Pietermaritzburg ? 172 connections on LinkedIn. View melissa konar's profile on LinkedIn, a professional community of 1 billion members.



Finance Manager at Zebra Renewables ? Experience: Zebra Renewables ? Education: University of South Africa/Universiteit van Suid-Afrika ? Location: Pietermaritzburg ? 313 connections on LinkedIn. View Roan Olivier's profile on LinkedIn, a professional community of 1 billion members.



Operations Manager ? Logistics & operations manager with a full pack of highly needed skills for the business ? Experience: Zebra Renewables ? Education: Akademia Wychowania Fizycznego im. J?zefa Pi??sudskiego w Warszawie ? Location: Cirencester ? 88 connections on LinkedIn. View Egan Paulovich's profile on LinkedIn, a professional community of 1 billion ???



More for ZEBRA RENEWABLES LTD (11771488) Officers; Persons with significant control; Filter officers Filter officers Current officers Officers: 1 officer / 0 resignations KANDHARI, Ashmeet Singh Correspondence address Europa House, 18 Wadsworth Road, Perivale, Greenford, United Kingdom, UB6 7JD



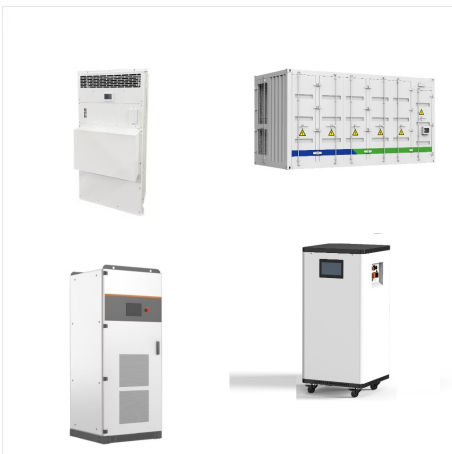
?????? ???? zebra niger ?????? LinkedIn??  
 ????????? ?????????-???????????? ????  
 ??????????????. ?????????????????  
 zebra ???? ????????????????? ?????? ?????????  
 ?????????(R)?u??. ?????? ?????????????  
 ?????????(R)?u?? ????????????????? ?????? LinkedIn  
 ????????????? ?????? ????????????? zebra  
 ??????????,?????? ???? ?????????????????  
 ??????????????<????(C).



??? Let's Talk Renewable Energy with Zebra Electrical! ??? Here's Jacob as he walks you through the ins and outs of our Solar Solutions. We've got everything you need to help you go green and start



Zebra Renewables Unit 23, Clawthorpe Hall  
Business Centre, Clawthorpe, Carnforth, LA6 1NU  
Click to show company phone <https://zebraelectrical.uk> United Kingdom : Business Details Installation size Smaller Installations Operating Area



More for ZEBRA RENEWABLES LTD (11771488)  
Officers; Persons with significant control; Persons with significant control: 1 active person with significant control / 0 active statements Whelh Limited Active Correspondence address Europa House, Front Office - 13, 18 Wadsworth Road, Perivale, United Kingdom, UB6 7JD





ZEBRA RENEWABLES. Registration number. K2022/812245/07. Company type. Private Company. Region-Director Count. 5. The company report includes (when available) Registered company details; Director/member details; Auditor/account officer details; History of registered company changes; Report cost: R111.61



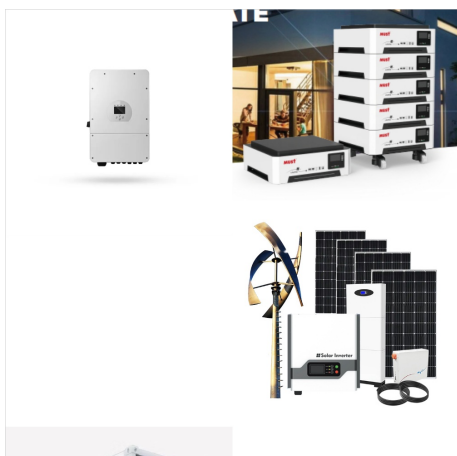
Zebra Renewables. Zebra Renewables Unit 23, Clawthorpe Hall Business Centre, Clawthorpe, Carnforth, LA6 1NU Click to show company phone [https://zebraelectrical .uk](https://zebraelectrical.uk) ????u- : ?????????????? ?????, ? ???? ?????????????? 1MW?????? ??????PV?????????? ??????????????



Administrator at SASSA ? Experience: Zebra Renewables ? Education: Umgungundlovu Tvet college ? Location: South Africa ? 63 connections on LinkedIn. View Nonkululeko Molefe's profile on LinkedIn, a professional community of 1 billion members.



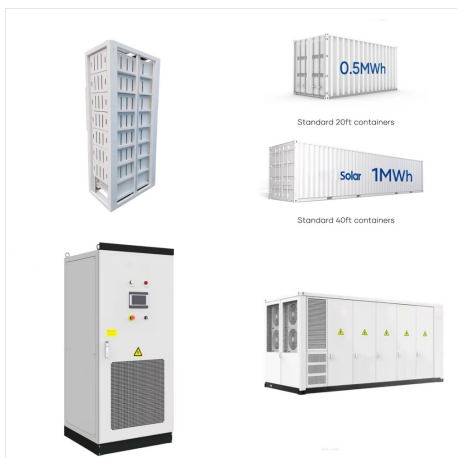
Zebra Renewables. Zebra Renewables Unit 23, Clawthorpe Hall Business Centre, Clawthorpe, Carnforth, LA6 1NU Click to show company phone [https://zebraelectrical .uk](https://zebraelectrical.uk) :



Zebra Renewables Unit 23, Clawthorpe Hall Business Centre, Clawthorpe, Carnforth, LA6 1NU Click to show company phone [https://zebraelectrical .uk](https://zebraelectrical.uk) Royaume-Uni : D?tails sur l'Entreprise Taille d"installation Les installations de moins de 1MW Zone d"Exploitation Royaume-Uni



Zebra Electrical, a PROUD family firm, established in 2014, initially as Hughes Electrical Contractors Ltd, with a focus on building relationships, and keeping our promises, we quickly grew, and it was soon time to expand our services from commercial clients to both Commercial and Residential.



The International Renewable Energy Agency (IRENA) is an intergovernmental organisation that supports countries in their transition to a sustainable energy future, and serves as the **ROLE OF ENERGY IN DEVELOPMENT IN NIGER** 3 THE RENEWABLES READINESS ASSESSMENT PROCESS IN NIGER 4 II. ENERGY CONTEXT 5 REGIONAL CONTEXT 5 ENERGY ???



Zebra Renewables Siemens Professional Education Report this profile About Experienced Electrical and Instrumentation Technician with a strong background of Electrical Systems. I am responsible for both Instrumentation and electrical systems, install, test, connect, modify electrical equipment, planned maintenance on high and low voltage



Zebra Renewables Unit 23, Clawthorpe Hall Business Centre, Clawthorpe, Carnforth, LA6 1NU Click to show company phone <https://zebraelectrical.uk> Reino Unido : Detalles de la Actividad de la Empresa Tama?o de la instalaci?n Instalaciones Menores ?rea Operadora